



2047 S Gray Drive
Lakewood, CO 80227

MLS # 3475283
PRICE \$890,000



Single Family



4126 SQFT



4 Beds



3/1 Baths



2 Car

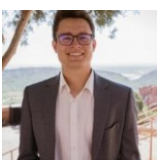


0.19 Acre

PROPERTY DETAILS

Your buyer(s) will love this beautiful home located in Lakewood Estates just a few minutes from The Bear Creek Greenbelt, Harvey Park, Southwest Plaza, and Belmar shopping center! Tucked in the heart of Lakewood this home is within walking distance to Ward Reservoir 1. Upon entering the home you'll find new flooring on both the main and upper level, a classy kitchen with newer appliances, and a lovely family room with a fireplace- perfect for hosting guests or enjoying quality time with your special someone. This home boasts 4 bedrooms on the upper level, of which the master suite hosts another fireplace, a walk-in closet with a laundry chute, a newly updated master bathroom with a double vanity sink, walk-in shower, tub, a European bidet, and heated tile floors! Also on the upper level, you'll find a newly renovated guest bathroom decorated with custom tile. The upper rooms would be great for a growing family or hosting guests!

On the main level, you'll find a spacious living room, family room, traditional dining room, and an office. The home also has a large finished basement which could be a great game room, guest suite, non-conforming bedroom, office, or even a short-term rental space as it has a full bathroom as well! The back yard is a lush haven as it is home to a variety of fruits and vegetables, healthy grass, and aesthetic water fountain displays which provide a tranquil time in the privacy of your back yard.



Seth Turner

719-221-3317

seth@legacyrealtyonline.com



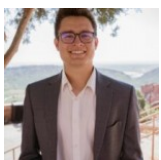
Scan code
for more
property
details



Keeping this yard green is easy as it has an automatic sprinkler system and is set up to make gardening easy. To make the backyard even more appealing, this home comes with a full Kenmore Elite gas grill set!

- New Furnace and AC

- Professional interior photos will be uploaded Monday because of the new carpet installation.



Seth Turner
719-221-3317
seth@legacyrealtyonline.com



Scan code
for more
property
details



2047 S Gray Drive, Lakewood, CO 80227 – All Levels



GROSS INTERNAL AREA
FLOOR 1: 842 sq. ft, FLOOR 2: 1413 sq. ft
FLOOR 3: 1234 sq. ft, EXCLUDED AREAS:
PATIO: 527 sq. ft, PORCH: 54 sq. ft
GARAGE: 427 sq. ft
TOTAL: 3489 sq. ft
SIZES AND DIMENSIONS ARE APPROXIMATE, ACTUAL MAY VARY.

Disclaimer: Sizes and Dimensions are Approximate, Actual May Vary.

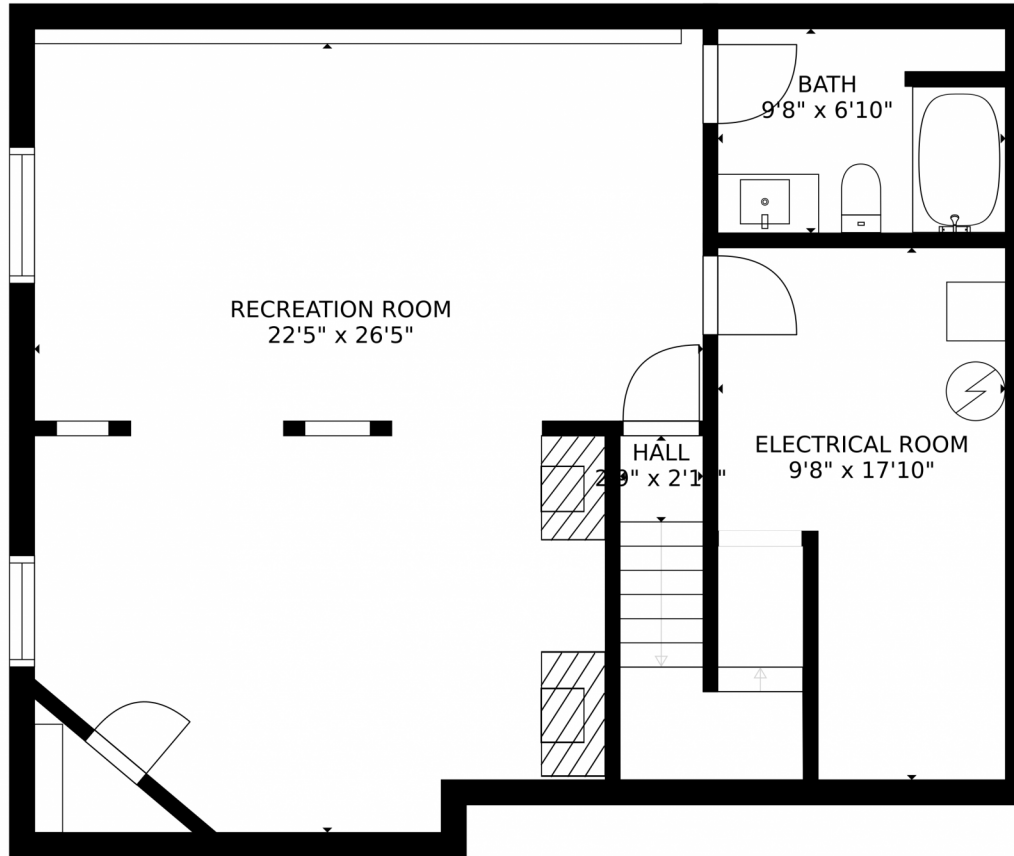


Seth Turner
719-221-3317
seth@legacyrealtyonline.com



Scan code
for more
property
details

2047 S Gray Drive, Lakewood, CO 80227 – Lower Level



GROSS INTERNAL AREA
FLOOR 1: 842 sq. ft, FLOOR 2: 1413 sq. ft
FLOOR 3: 1234 sq. ft, EXCLUDED AREAS:
PATIO: 527 sq. ft, PORCH: 54 sq. ft
GARAGE: 427 sq. ft
TOTAL: 3489 sq. ft
SIZES AND DIMENSIONS ARE APPROXIMATE, ACTUAL MAY VARY.

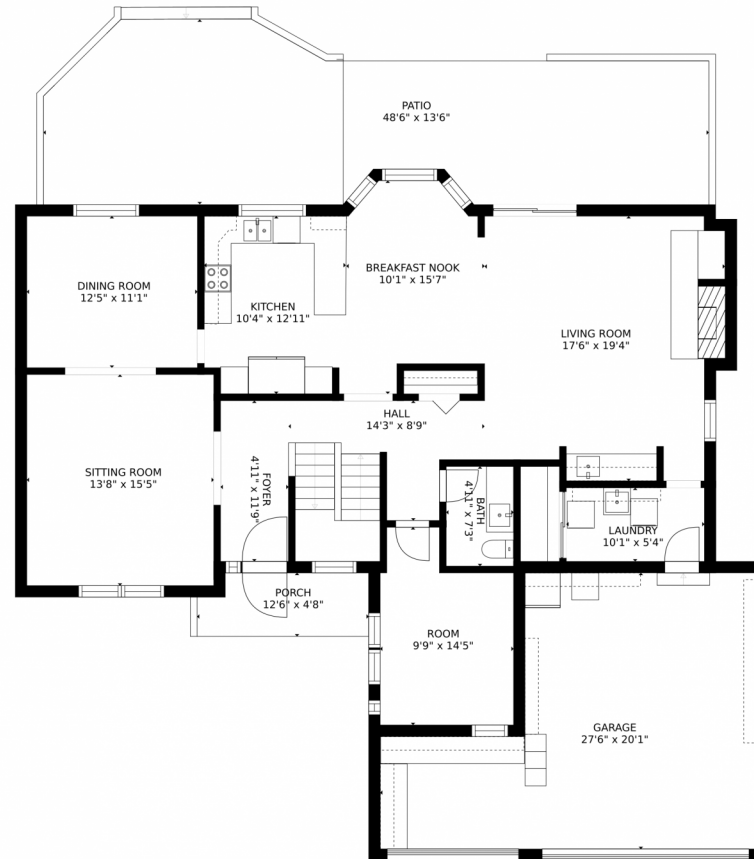
Disclaimer: Sizes and Dimensions are Approximate, Actual May Vary.



Seth Turner
719-221-3317
seth@legacyrealtyonline.com



2047 S Gray Drive, Lakewood, CO 80227 – Main Level



GROSS INTERNAL AREA
FLOOR 1: 842 sq. ft, FLOOR 2: 1413 sq. ft
FLOOR 3: 1234 sq. ft, EXCLUDED AREAS:
PATIO: 527 sq. ft, PORCH: 54 sq. ft
GARAGE: 427 sq. ft
TOTAL: 3489 sq. ft
SIZES AND DIMENSIONS ARE APPROXIMATE, ACTUAL MAY VARY.

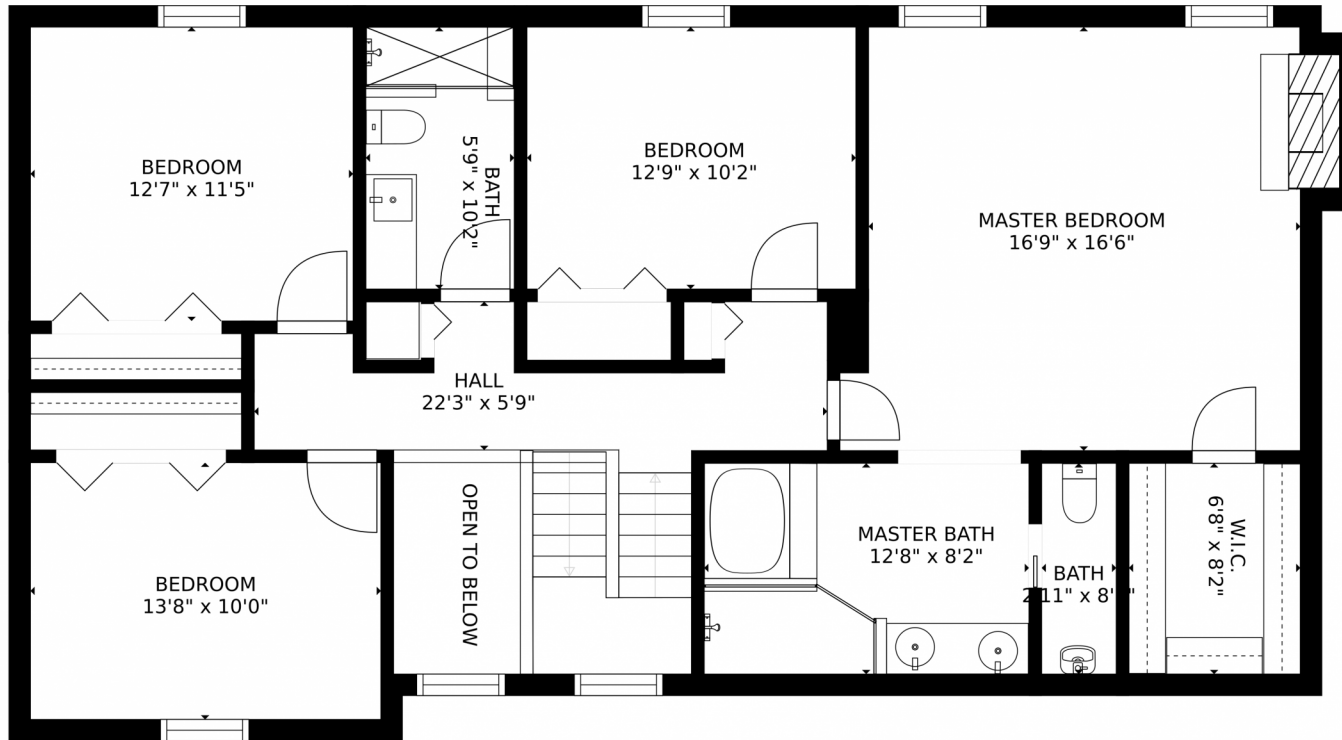
Disclaimer: Sizes and Dimensions are Approximate, Actual May Vary.



Seth Turner
719-221-3317
seth@legacyrealtyonline.com



2047 S Gray Drive, Lakewood, CO 80227 – 2nd Level



GROSS INTERNAL AREA
FLOOR 1: 842 sq. ft. FLOOR 2: 1413 sq. ft.
FLOOR 3: 1234 sq. ft. EXCLUDED AREAS:
PATIO: 527 sq. ft. PORCH: 54 sq. ft.
GARAGE: 427 sq. ft.
TOTAL: 3489 sq. ft.
SIZES AND DIMENSIONS ARE APPROXIMATE, ACTUAL MAY VARY.

Disclaimer: Sizes and Dimensions are Approximate, Actual May Vary.



Seth Turner
719-221-3317
seth@legacyrealtyonline.com

