



7135 Newland Street  
 Arvada, CO 80003  
 COMMUNITY: Lamar Heights

MLS # 1683976  
 PRICE \$540,000



Single Family



1794 SQFT



4 Beds



2 Baths



1 Car



0 Acre

## PROPERTY DETAILS

OPEN HOUSE SATURDAY 11/6 1:30-4:30PM

Beautiful Remodeled Brick Ranch MOVE IN READY! 4 bedrooms, 2 bathrooms, Fresh texture and paint throughout Interior, New vinyl plank wood floor through main living room, and kitchen. New carpet in bedrooms, and in basement with additional Rec Room Space. Modern kitchen with new cabinets and new stainless appliances. Lots of natural light with sliding glass door that exits on to a large patio / deck. Oversize Laundry room, plenty room for storage. Fresh paint on Exterior and shed. Huge backyard with sprinkler system for maintaining the beautiful yard, has been winterized. Efficient and effective Evaporative cooler, has been winterized. Less than 10 minutes from Olde Town Arvada, a quick walk to multiple parks, and is in close proximity to the Boulder Turnpike & I-25.



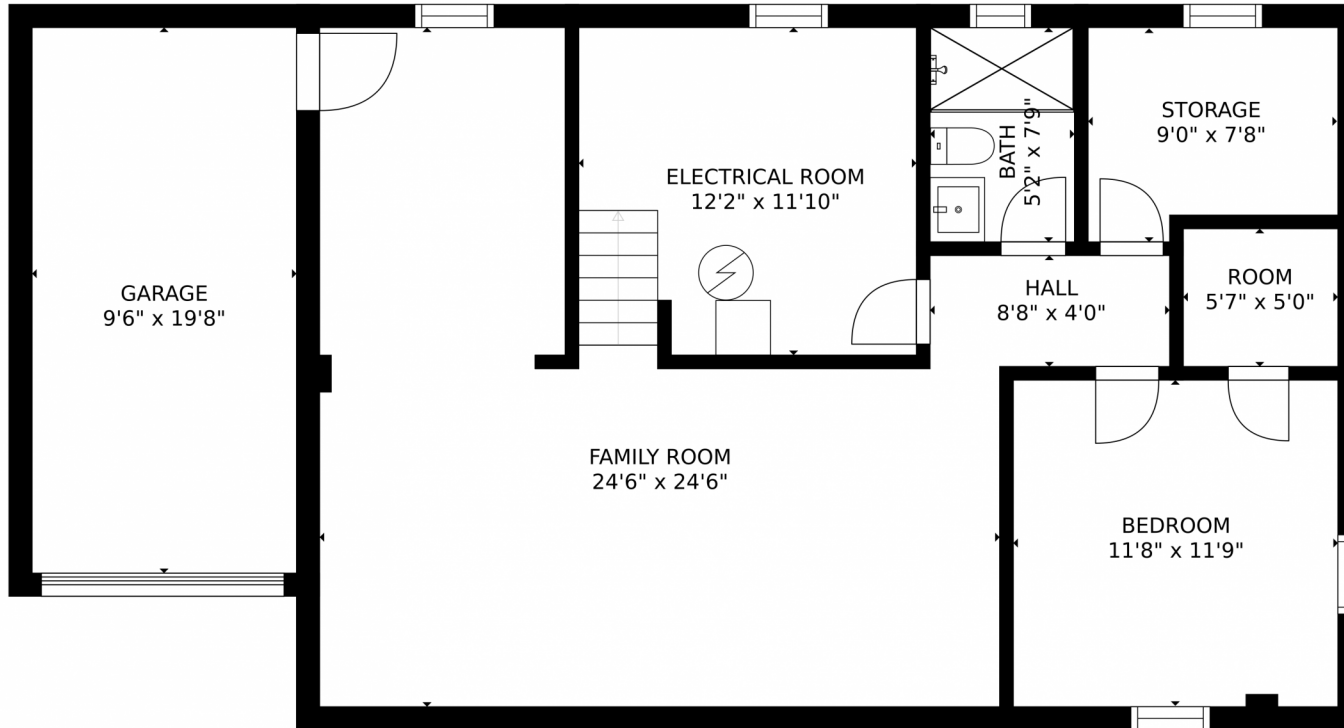
**Savie Baros**  
 720-296-0861  
 savieb66@gmail.com



Scan code  
 for more  
 property  
 details



# 7135 Newland Street, Arvada, CO 80003 – Lower Level



GROSS INTERNAL AREA  
FLOOR 1: 899 sq. ft., FLOOR 2: 899 sq. ft.  
EXCLUDED AREAS: , GARAGE: 187 sq. ft.  
DECK: 223 sq. ft., PORCH: 30 sq. ft.  
TOTAL: 1797 sq. ft.  
SIZES AND DIMENSIONS ARE APPROXIMATE, ACTUAL MAY VARY.

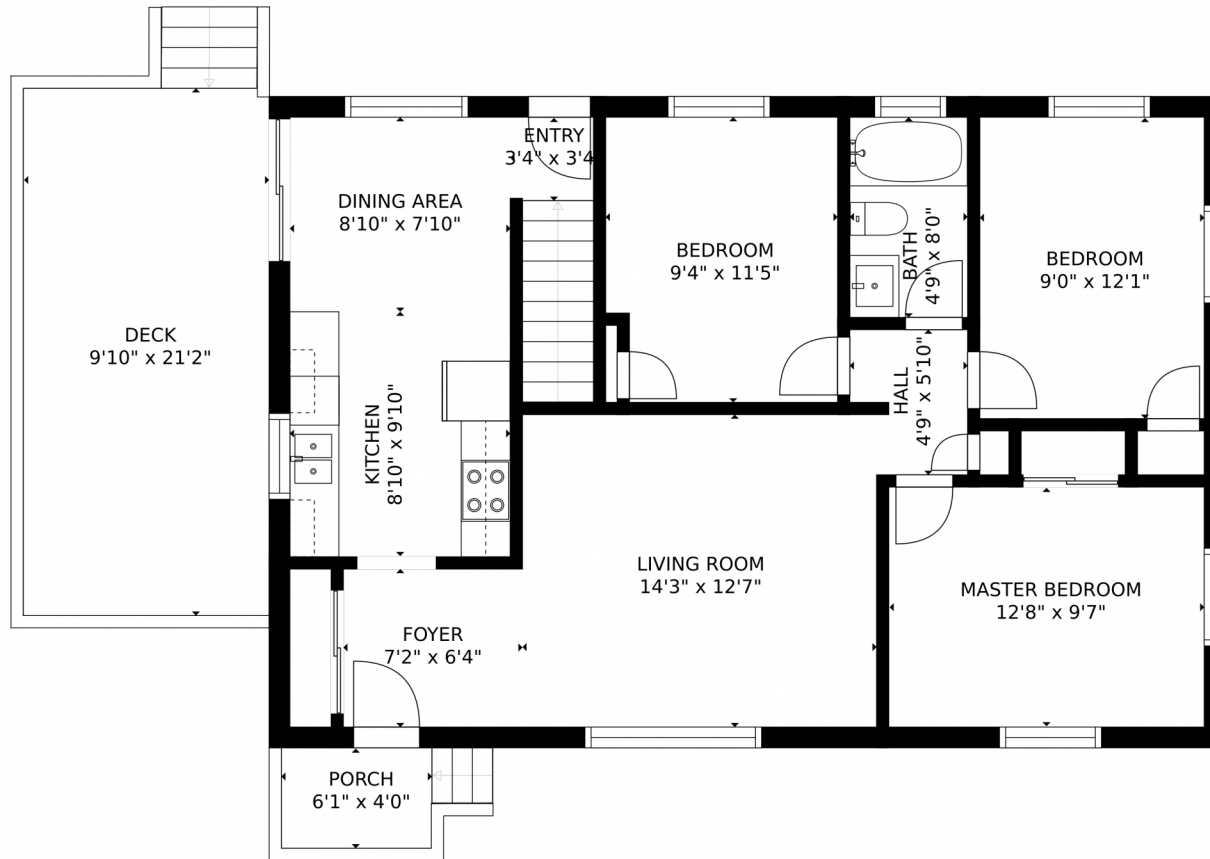
Disclaimer: Sizes and Dimensions are Approximate, Actual May Vary.



**Savie Baros**  
720-296-0861  
savieb66@gmail.com



# 7135 Newland Street, Arvada, CO 80003 – Main Level



GROSS INTERNAL AREA  
FLOOR 1: 899 sq. ft, FLOOR 2: 899 sq. ft  
EXCLUDED AREAS: , GARAGE: 187 sq. ft  
DECK: 223 sq. ft, PORCH: 30 sq. ft  
TOTAL: 1797 sq. ft  
SIZES AND DIMENSIONS ARE APPROXIMATE, ACTUAL MAY VARY.

Disclaimer: Sizes and Dimensions are Approximate, Actual May Vary.



**Savie Baros**  
720-296-0861  
savieb66@gmail.com



Scan code  
for more  
property  
details

7135 Newland Street, Arvada, CO 80003 – All Floors



SIZES AND DIMENSIONS ARE APPROXIMATE, ACTUAL MAY VARY.

Disclaimer: Sizes and Dimensions are Approximate, Actual May Vary.



**Savie Baros**  
720-296-0861  
savieb66@gmail.com

