



540 South Youngfield Court
Lakewood, CO 80228



Single Family



2555 SQFT



Heather Lembke Healy
303-880-4116
hlembke11@gmail.com



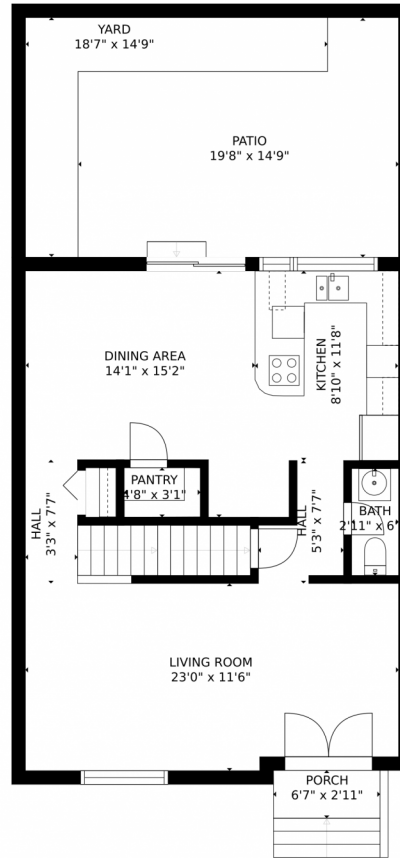
Robert Lembke
303-829-6181
rglembke@aol.com



Scan code
for more
property
details



540 South Youngfield Court, Lakewood, CO 80228 – Main Level



GROSS INTERNAL AREA
FLOOR 1: 706 sq. ft. FLOOR 2: 698 sq. ft.
FLOOR 3: 772 sq. ft. EXCLUDED AREAS:
PATIO: 240 sq. ft. PORCH: 19 sq. ft.
TOTAL: 2177 sq. ft.
SIZES AND DIMENSIONS ARE APPROXIMATE, ACTUAL MAY VARY.

Disclaimer: Sizes and Dimensions are Approximate, Actual May Vary.



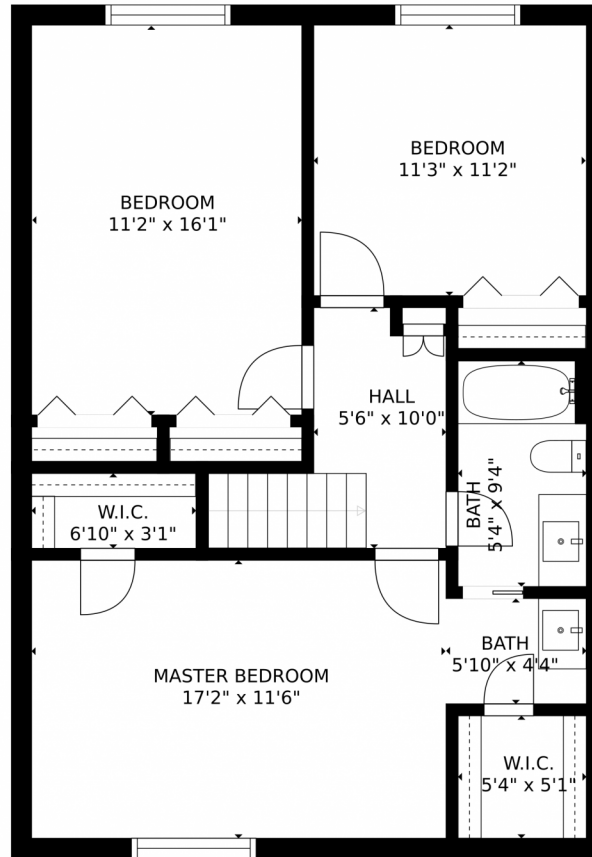
Heather Lembke Healy
303-880-4116
hlemcke11@gmail.com



Robert Lembke
303-829-6181
rglemcke@aol.com



540 South Youngfield Court, Lakewood, CO 80228 – Upper Level



GROSS INTERNAL AREA
FLOOR 1: 706 sq. ft, FLOOR 2: 698 sq. ft
FLOOR 3: 772 sq. ft, EXCLUDED AREAS:
PATIO: 240 sq. ft, PORCH: 19 sq. ft
TOTAL: 2177 sq. ft
SIZES AND DIMENSIONS ARE APPROXIMATE, ACTUAL MAY VARY.

Disclaimer: Sizes and Dimensions are Approximate, Actual May Vary.



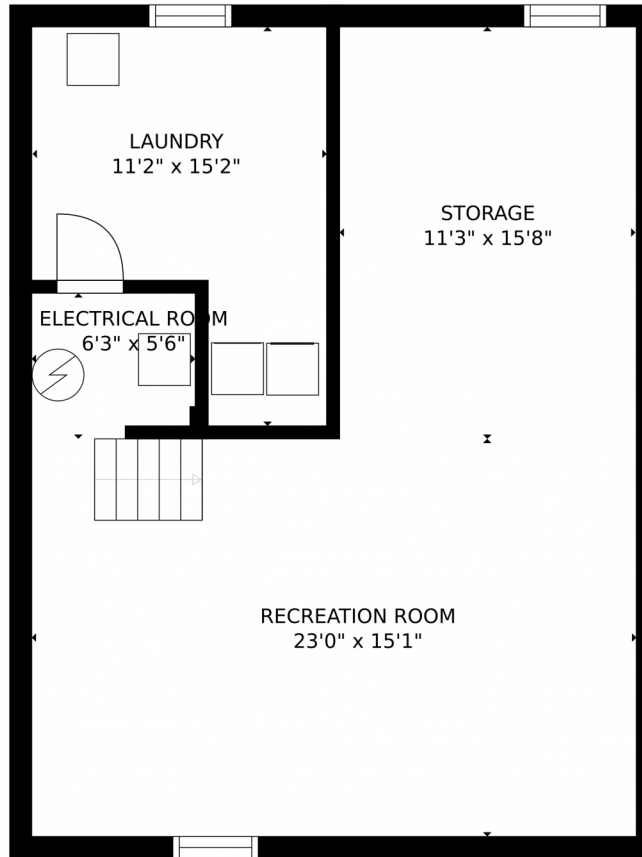
Heather Lembke Healy
303-880-4116
hlemcke11@gmail.com



Robert Lembke
303-829-6181
rglemcke@aol.com



540 South Youngfield Court, Lakewood, CO 80228 – Lower Level



GROSS INTERNAL AREA
FLOOR 1: 706 sq. ft. FLOOR 2: 698 sq. ft.
FLOOR 3: 772 sq. ft. EXCLUDED AREAS:
PATIO: 240 sq. ft. PORCH: 19 sq. ft.
TOTAL: 2177 sq. ft.
SIZES AND DIMENSIONS ARE APPROXIMATE, ACTUAL MAY VARY.

Disclaimer: Sizes and Dimensions are Approximate, Actual May Vary.



Heather Lembke Healy
303-880-4116
hlemcke11@gmail.com



Robert Lembke
303-829-6181
rglemcke@aol.com



540 South Youngfield Court, Lakewood, CO 80228 – All Levels



GROSS INTERNAL AREA
 FLOOR 1: 706 sq. ft. FLOOR 2: 698 sq. ft.
 FLOOR 3: 772 sq. ft. EXCLUDED AREAS:
 PATIO: 240 sq. ft. PORCH: 19 sq. ft.
 TOTAL: 2177 sq. ft.
 SIZES AND DIMENSIONS ARE APPROXIMATE, ACTUAL MAY VARY.

Disclaimer: Sizes and Dimensions are Approximate, Actual May Vary.



Heather Lembke Healy
 303-880-4116
 hlembke11@gmail.com



Robert Lembke
 303-829-6181
 rglembke@aol.com

