



13652 Shiloh Drive  
Conifer, CO 80433



Single Family



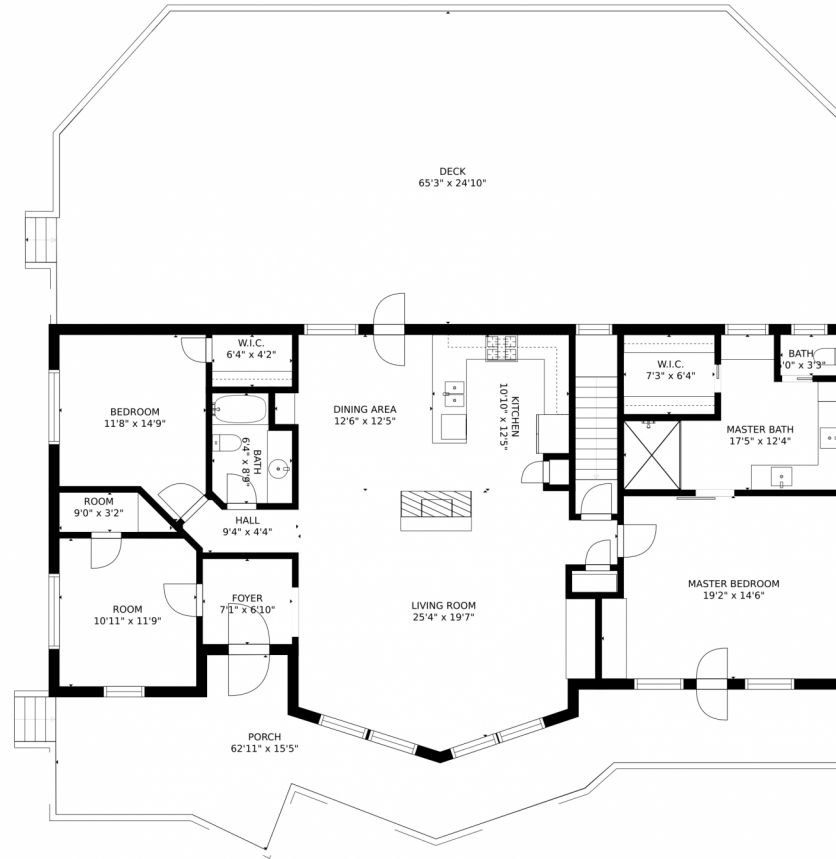
3208 SQFT



Darcy Keady  
303-881-4526  
darcykeady@gmail.com



Scan code  
for more  
property  
details



GROSS INTERNAL AREA  
FLOOR 1: 1201 sq. ft. FLOOR 2: 1775 sq. ft  
EXCLUDED AREAS: , PATIO: 1009 sq. ft  
GARAGE: 1023 sq. ft. DECK: 1482 sq. ft  
PORCH: 477 sq. ft  
TOTAL: 2976 sq. ft  
SIZES AND DIMENSIONS ARE APPROXIMATE, ACTUAL MAY VARY.

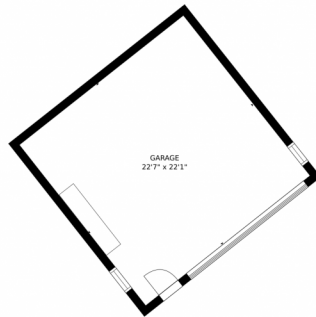
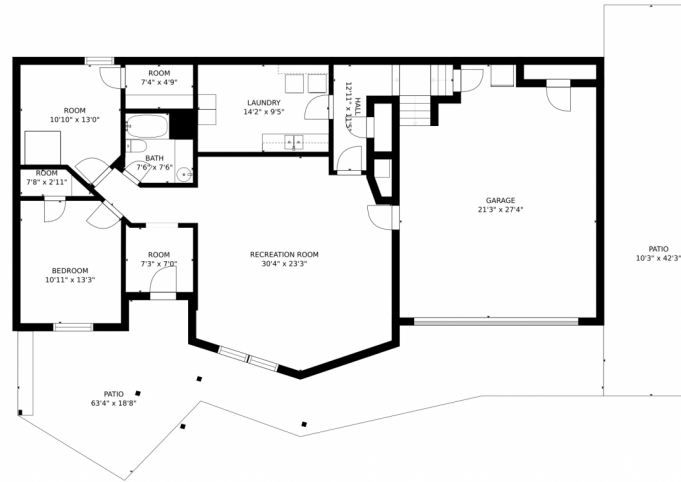
Disclaimer: Sizes and Dimensions are Approximate, Actual May Vary.



**Darcy Keady**  
303-881-4526  
darcykeady@gmail.com



# 13652 Shiloh Drive, Conifer, CO 80433 – Lower Level



GROSS INTERNAL AREA  
FLOOR 1: 1201 sq. ft, FLOOR 2: 1775 sq. ft  
EXCLUDED AREAS: , PATIO: 1009 sq. ft  
GARAGE: 1023 sq. ft, DECK: 1482 sq. ft  
PORCH: 477 sq. ft  
TOTAL: 2976 sq. ft  
SIZES AND DIMENSIONS ARE APPROXIMATE, ACTUAL MAY VARY.

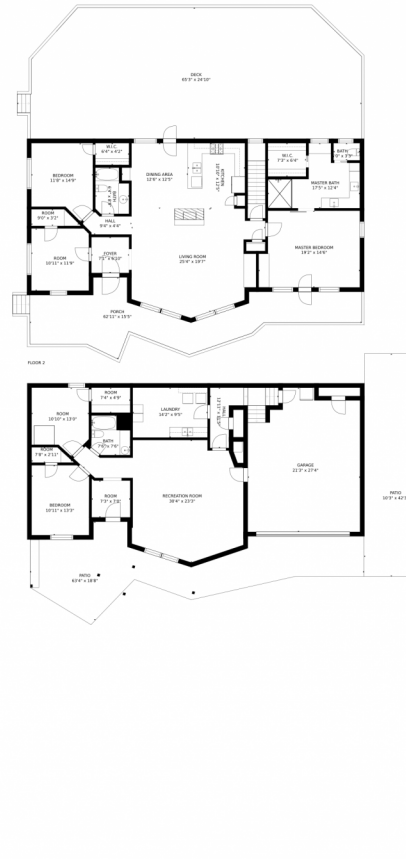
Disclaimer: Sizes and Dimensions are Approximate, Actual May Vary.



**Darcy Keady**  
303-881-4526  
darcykeady@gmail.com



# 13652 Shiloh Drive, Conifer, CO 80433 – All Levels



GROSS INTERNAL AREA  
FLOOR 1: 1201 sq. ft. FLOOR 2: 1775 sq. ft.  
EXCLUDED AREAS: , PATIO: 1009 sq. ft  
GARAGE: 1023 sq. ft. DECK: 1482 sq. ft  
PORCH: 477 sq. ft  
TOTAL: 2976 sq. ft

SIZES AND DIMENSIONS ARE APPROXIMATE, ACTUAL MAY VARY.

Disclaimer: Sizes and Dimensions are Approximate, Actual May Vary.



**Darcy Keady**  
303-881-4526  
darcykeady@gmail.com

