



 Single Family

 1900 SQFT

 3 Beds

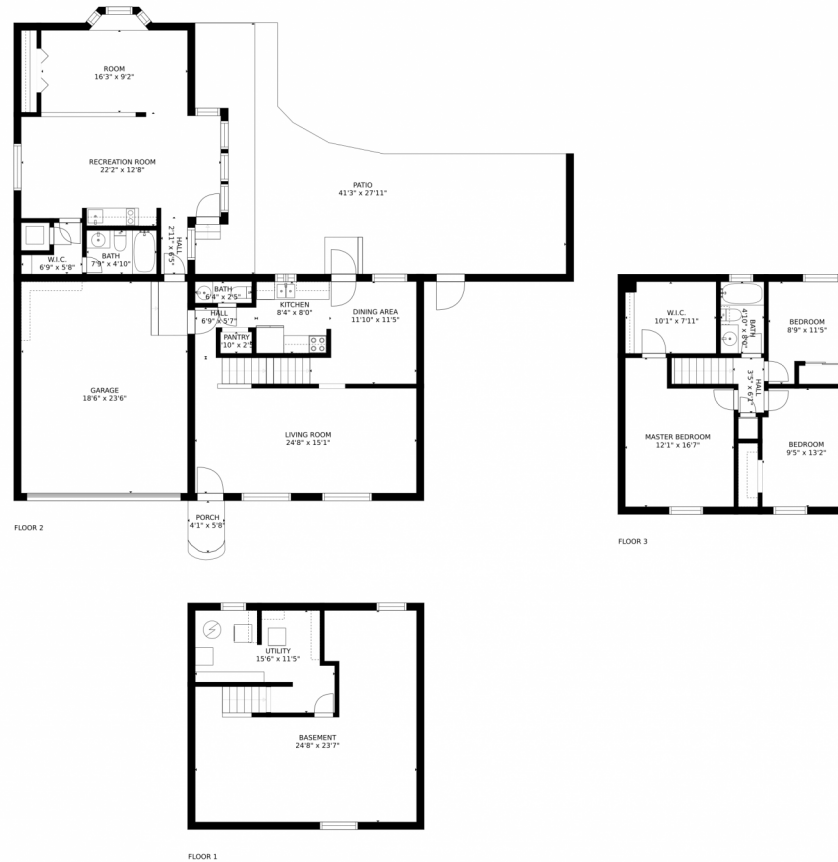
 2/1 Baths



Taylor Haas
303-665-7368
taylorh@coloradorpm.com
<https://www.coloradorpm.com/available-rental-properties-denver>



10502 Pierson Circle, Westminster, CO 80021 – All Levels



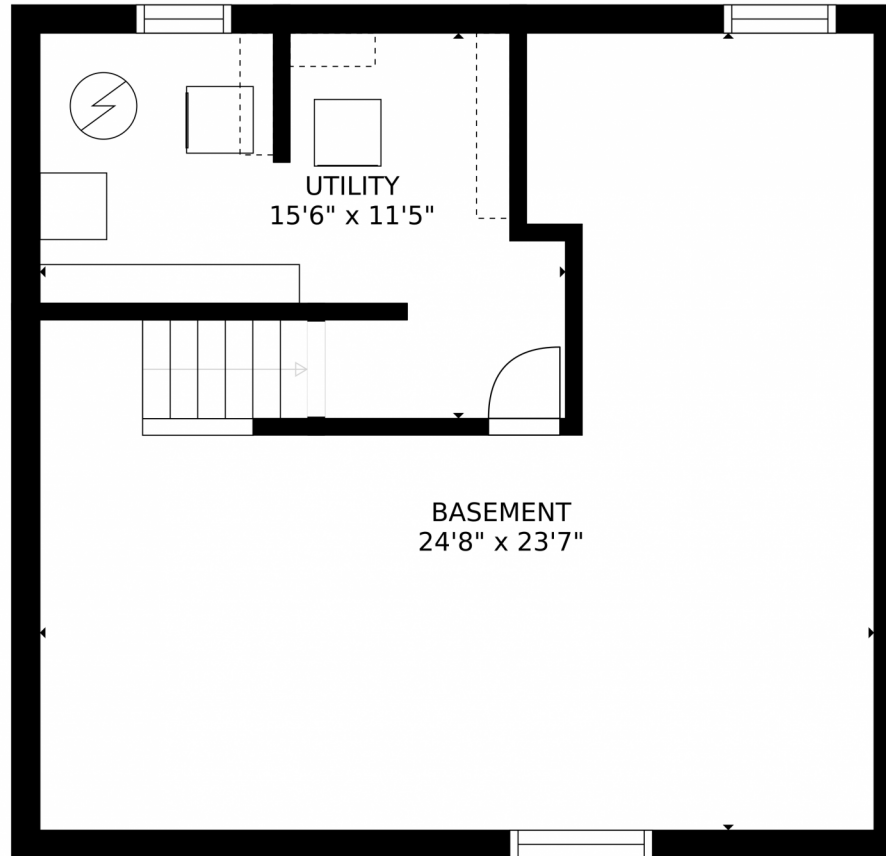
GROSS INTERNAL AREA
FLOOR 1: 581 sq. ft, FLOOR 2: 1132 sq. ft
FLOOR 3: 618 sq. ft, EXCLUDED AREAS:
PATIO: 658 sq. ft, PORCH: 22 sq. ft
GARAGE: 436 sq. ft
TOTAL: 2330 sq. ft
SIZES AND DIMENSIONS ARE APPROXIMATE, ACTUAL MAY VARY.

Disclaimer: Sizes and Dimensions are Approximate, Actual May Vary.



Taylor Haas
303-665-7368
taylorh@coloradorpm.com
<https://www.coloradorpm.com/available-rental-properties-denver>





GROSS INTERNAL AREA
FLOOR 1: 581 sq. ft. FLOOR 2: 1132 sq. ft.
FLOOR 3: 618 sq. ft. EXCLUDED AREAS:
PATIO: 658 sq. ft. PORCH: 22 sq. ft.
GARAGE: 436 sq. ft.
TOTAL: 2330 sq. ft.
SIZES AND DIMENSIONS ARE APPROXIMATE, ACTUAL MAY VARY.

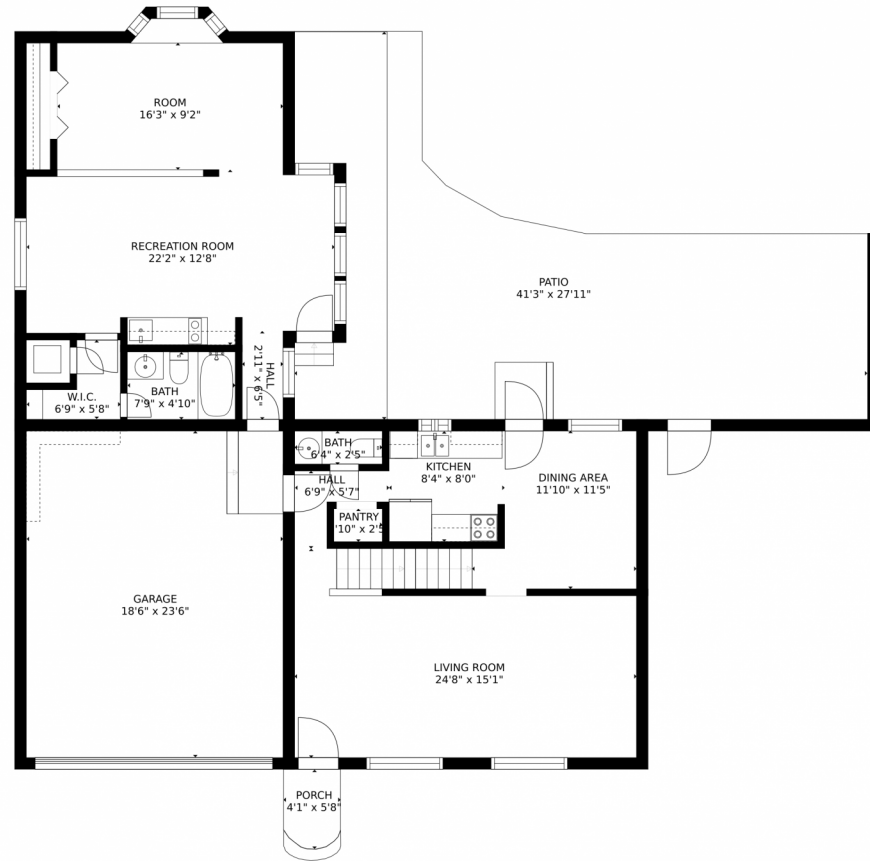
Disclaimer: Sizes and Dimensions are Approximate, Actual May Vary.



Taylor Haas
303-665-7368
taylorh@coloradorpm.com
<https://www.coloradorpm.com/available-rental-properties-denver>



10502 Pierson Circle, Westminster, CO 80021 – Main Level



GROSS INTERNAL AREA
FLOOR 1: 581 sq. ft. FLOOR 2: 1132 sq. ft.
FLOOR 3: 618 sq. ft. EXCLUDED AREAS:
PATIO: 658 sq. ft. PORCH: 22 sq. ft.
GARAGE: 436 sq. ft.
TOTAL: 2330 sq. ft.
SIZES AND DIMENSIONS ARE APPROXIMATE, ACTUAL MAY VARY.

Disclaimer: Sizes and Dimensions are Approximate, Actual May Vary.



Taylor Haas

303-665-7368

taylorh@coloradorpm.com

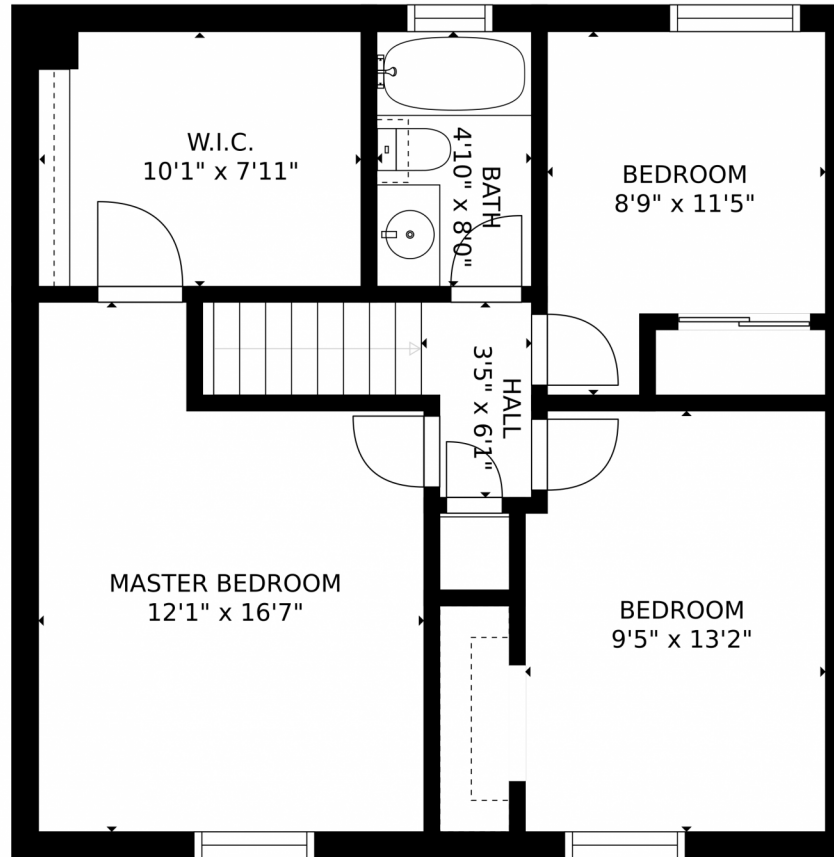
<https://www.coloradorpm.com/available-rental-properties-denver>



Scan code
for more
property
details



10502 Pierson Circle, Westminster, CO 80021 – 2nd Level



GROSS INTERNAL AREA
FLOOR 1: 581 sq. ft, FLOOR 2: 1132 sq. ft
FLOOR 3: 618 sq. ft, EXCLUDED AREAS:
PATIO: 658 sq. ft, PORCH: 22 sq. ft
GARAGE: 436 sq. ft
TOTAL: 2330 sq. ft
SIZES AND DIMENSIONS ARE APPROXIMATE, ACTUAL MAY VARY.

Disclaimer: Sizes and Dimensions are Approximate, Actual May Vary.



Taylor Haas
303-665-7368
taylorh@coloradorpm.com
<https://www.coloradorpm.com/available-rental-properties-denver>

