



Single Family



3600 SQFT



**Bobbi Peerless**  
303-475-5557  
bpeerlesrealty@gmail.com



Scan code  
for more  
property  
details



# 1030 South Butler Way, Lakewood, CO 80226 – First Floor



GROSS INTERNAL AREA  
FLOOR 1: 1303 sq. ft, FLOOR 2: 2007 sq. ft  
EXCLUDED AREAS: , PATIO: 283 sq. ft  
GARAGE: 412 sq. ft  
TOTAL: 3310 sq. ft  
SIZES AND DIMENSIONS ARE APPROXIMATE, ACTUAL MAY VARY.

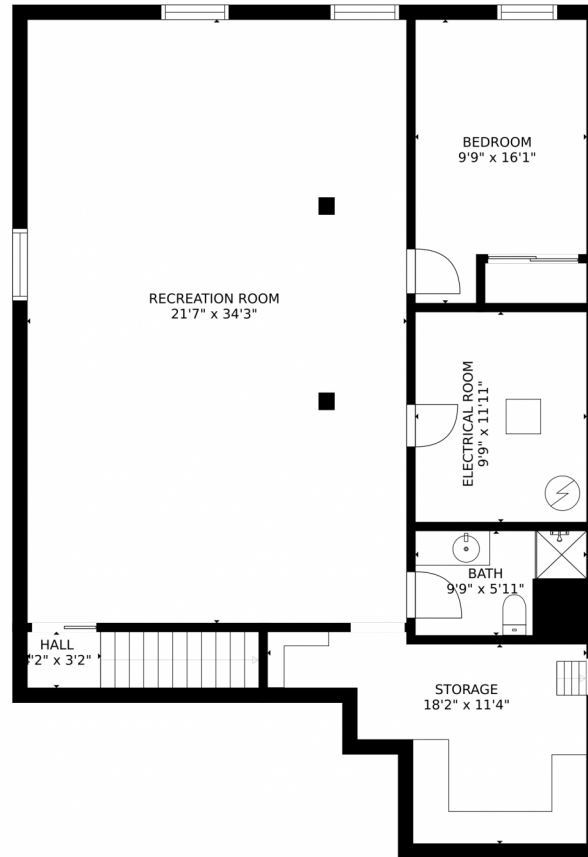
Disclaimer: Sizes and Dimensions are Approximate, Actual May Vary.



**Bobbi Peerless**  
303-475-5557  
bpeerlessrealty@gmail.com



1030 South Butler Way, Lakewood, CO 80226 – Basement



GROSS INTERNAL AREA  
FLOOR 1: 1303 sq. ft, FLOOR 2: 2007 sq. ft  
EXCLUDED AREAS: , PATIO: 283 sq. ft  
GARAGE: 412 sq. ft  
TOTAL: 3310 sq. ft  
SIZES AND DIMENSIONS ARE APPROXIMATE, ACTUAL MAY VARY.

Disclaimer: Sizes and Dimensions are Approximate, Actual May Vary.

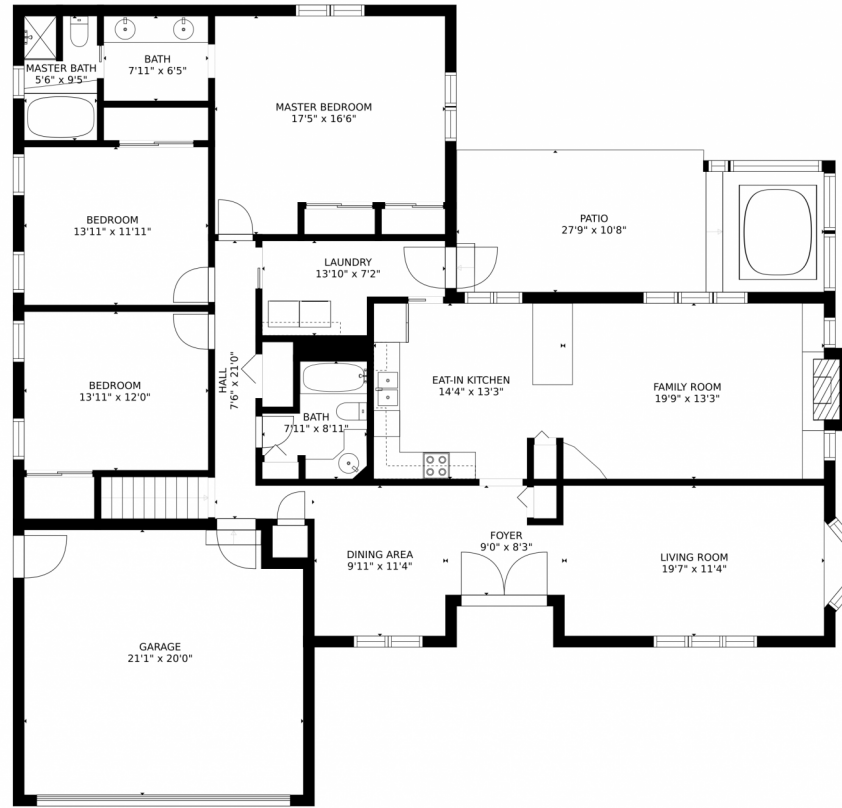


**Bobbi Peerless**  
303-475-5557  
bpeerlessrealty@gmail.com





# 1030 South Butler Way, Lakewood, CO 80226 – All Floors



GROSS INTERNAL AREA  
FLOOR 1: 1303 sq. ft, FLOOR 2: 2007 sq. ft  
EXCLUDED AREAS: , PATIO: 283 sq. ft  
GARAGE: 412 sq. ft  
TOTAL: 3310 sq. ft  
SIZES AND DIMENSIONS ARE APPROXIMATE, ACTUAL MAY VARY.

Disclaimer: Sizes and Dimensions are Approximate, Actual May Vary.



**Bobbi Peerless**  
303-475-5557  
bpeerlessrealty@gmail.com

