




 Single Family

 1585 SQFT

 3 Beds

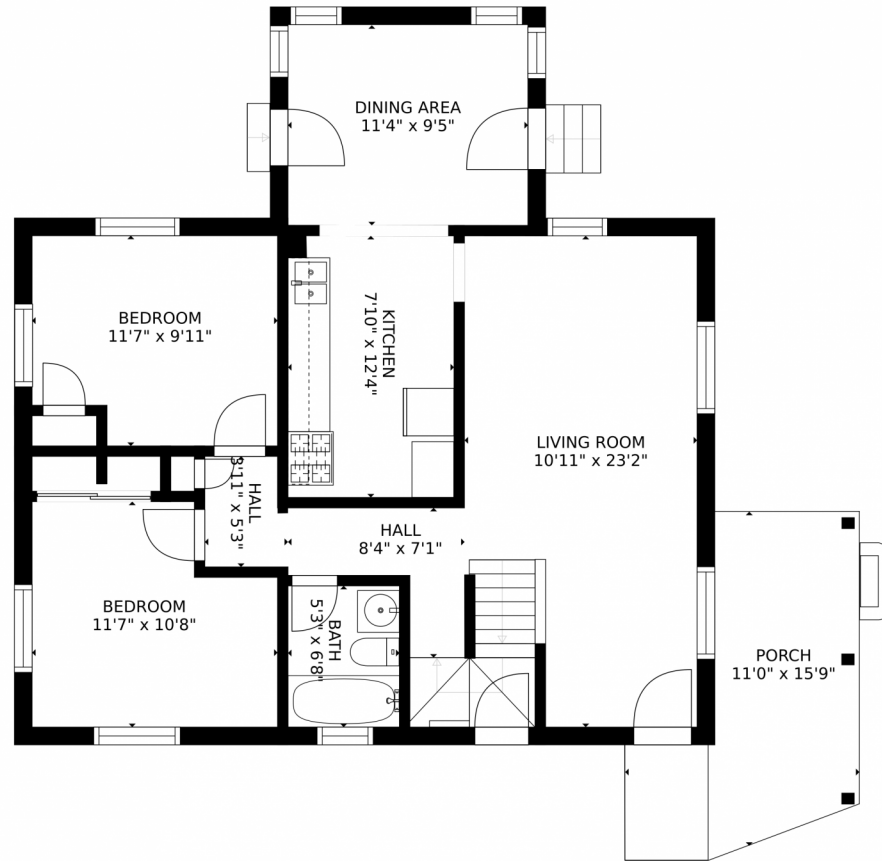
 2 Baths



Taylor Haas
303-665-7368
taylorh@coloradorpm.com
<https://www.coloradorpm.com/available-rental-properties-denv>



2840 West Park Place, Denver, CO 80219 – Main



GROSS INTERNAL AREA
FLOOR 1: 433 sq. ft, FLOOR 2: 0 sq. ft
FLOOR 3: 838 sq. ft, FLOOR 4: 239 sq. ft
EXCLUDED AREAS: , GARAGE: 367 sq. ft
PORCH: 126 sq. ft
TOTAL: 1510 sq. ft

SIZES AND DIMENSIONS ARE APPROXIMATE, ACTUAL MAY VARY.

Disclaimer: Sizes and Dimensions are Approximate, Actual May Vary.



Taylor Haas

303-665-7368

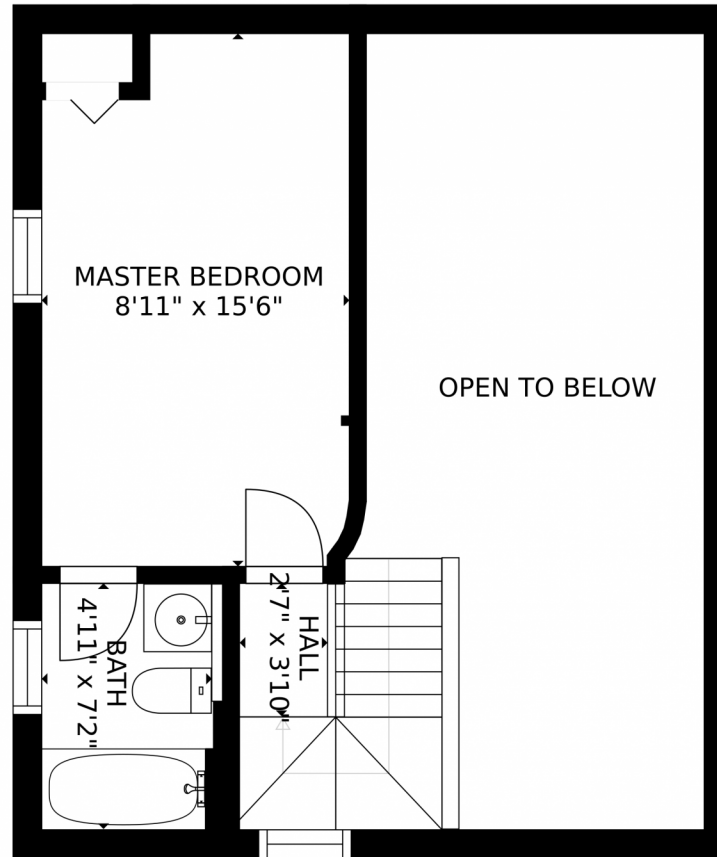
taylorh@coloradorpm.com

<https://www.coloradorpm.com/available-rental-properties-denver>



Scan code
for more
property
details





GROSS INTERNAL AREA
FLOOR 1: 433 sq. ft, FLOOR 2: 0 sq. ft
FLOOR 3: 838 sq. ft, FLOOR 4: 239 sq. ft
EXCLUDED AREAS: , GARAGE: 367 sq. ft
PORCH: 126 sq. ft
TOTAL: 1510 sq. ft

SIZES AND DIMENSIONS ARE APPROXIMATE, ACTUAL MAY VARY.

Disclaimer: Sizes and Dimensions are Approximate, Actual May Vary.



Taylor Haas

303-665-7368

taylorh@coloradorpm.com

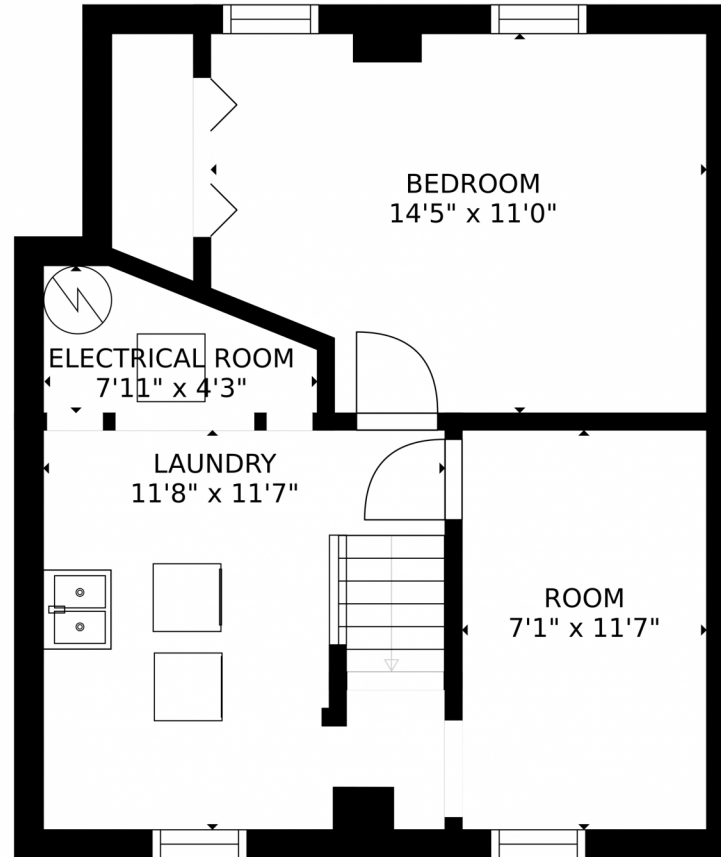
<https://www.coloradorpm.com/available-rental-properties-denver>



Scan code
for more
property
details



2840 West Park Place, Denver, CO 80219 – Basement



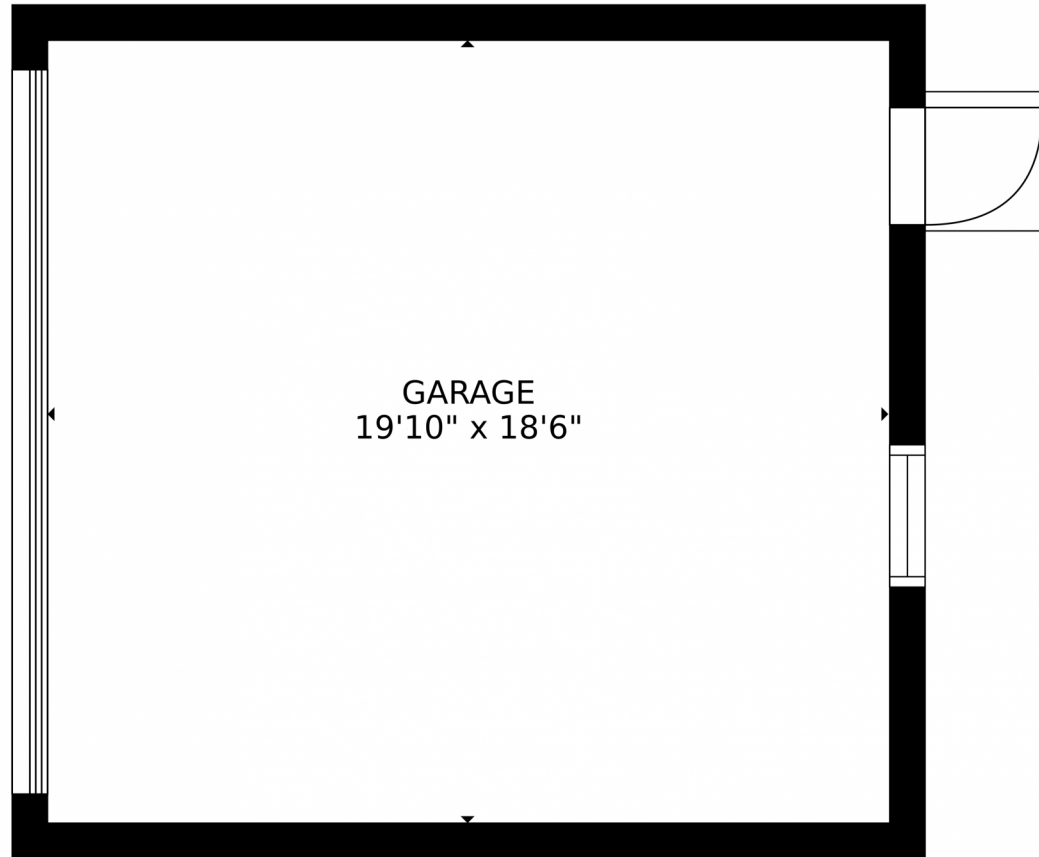
GROSS INTERNAL AREA
FLOOR 1: 433 sq. ft, FLOOR 2: 0 sq. ft
FLOOR 3: 838 sq. ft, FLOOR 4: 239 sq. ft
EXCLUDED AREAS: , GARAGE: 367 sq. ft
PORCH: 126 sq. ft
TOTAL: 1510 sq. ft
SIZES AND DIMENSIONS ARE APPROXIMATE, ACTUAL MAY VARY.

Disclaimer: Sizes and Dimensions are Approximate, Actual May Vary.



Taylor Haas
303-665-7368
taylorh@coloradorpm.com
<https://www.coloradorpm.com/available-rental-properties-denver>





GROSS INTERNAL AREA
FLOOR 1: 433 sq. ft, FLOOR 2: 0 sq. ft
FLOOR 3: 838 sq. ft, FLOOR 4: 239 sq. ft
EXCLUDED AREAS: , GARAGE: 367 sq. ft
PORCH: 126 sq. ft
TOTAL: 1510 sq. ft
SIZES AND DIMENSIONS ARE APPROXIMATE, ACTUAL MAY VARY.

Disclaimer: Sizes and Dimensions are Approximate, Actual May Vary.

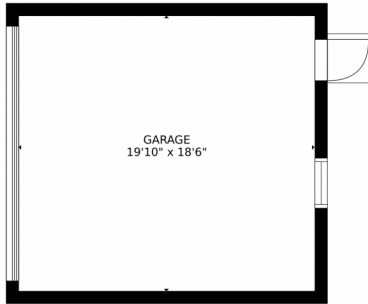


Taylor Haas
303-665-7368
taylorh@coloradorpm.com
<https://www.coloradorpm.com/available-rental-properties-denver>

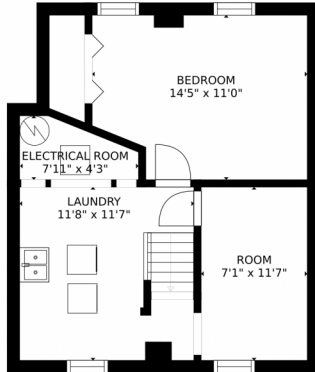


Scan code
for more
property
details

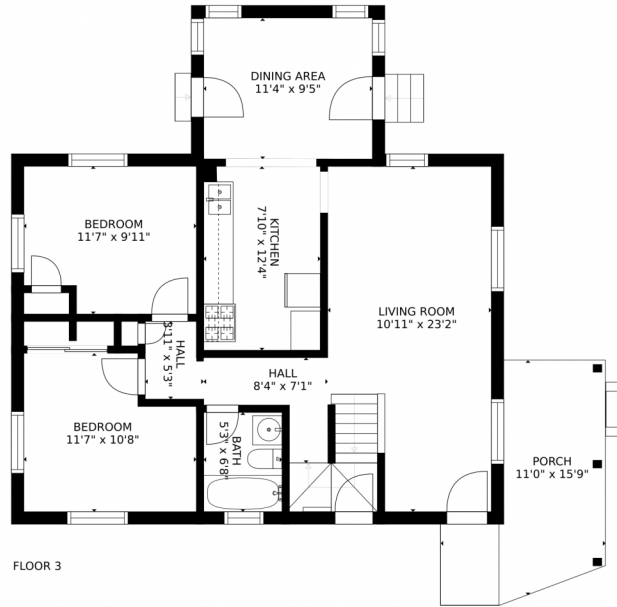
2840 West Park Place, Denver, CO 80219 – All Levels



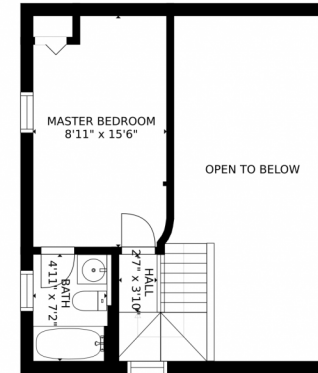
FLOOR 2



FLOOR 1



FLOOR 3



FLOOR 4

GROSS INTERNAL AREA
FLOOR 1: 433 sq. ft, FLOOR 2: 0 sq. ft
FLOOR 3: 838 sq. ft, FLOOR 4: 239 sq. ft
EXCLUDED AREAS: , GARAGE: 367 sq. ft
PORCH: 126 sq. ft
TOTAL: 1510 sq. ft
SIZES AND DIMENSIONS ARE APPROXIMATE, ACTUAL MAY VARY.

Disclaimer: Sizes and Dimensions are Approximate, Actual May Vary.



Taylor Haas

303-665-7368

taylorh@coloradopr.com

<https://www.coloradopr.com/available-rental-properties-denv>



Scan code
for more
property
details

