

Single Family



3137 SQFT



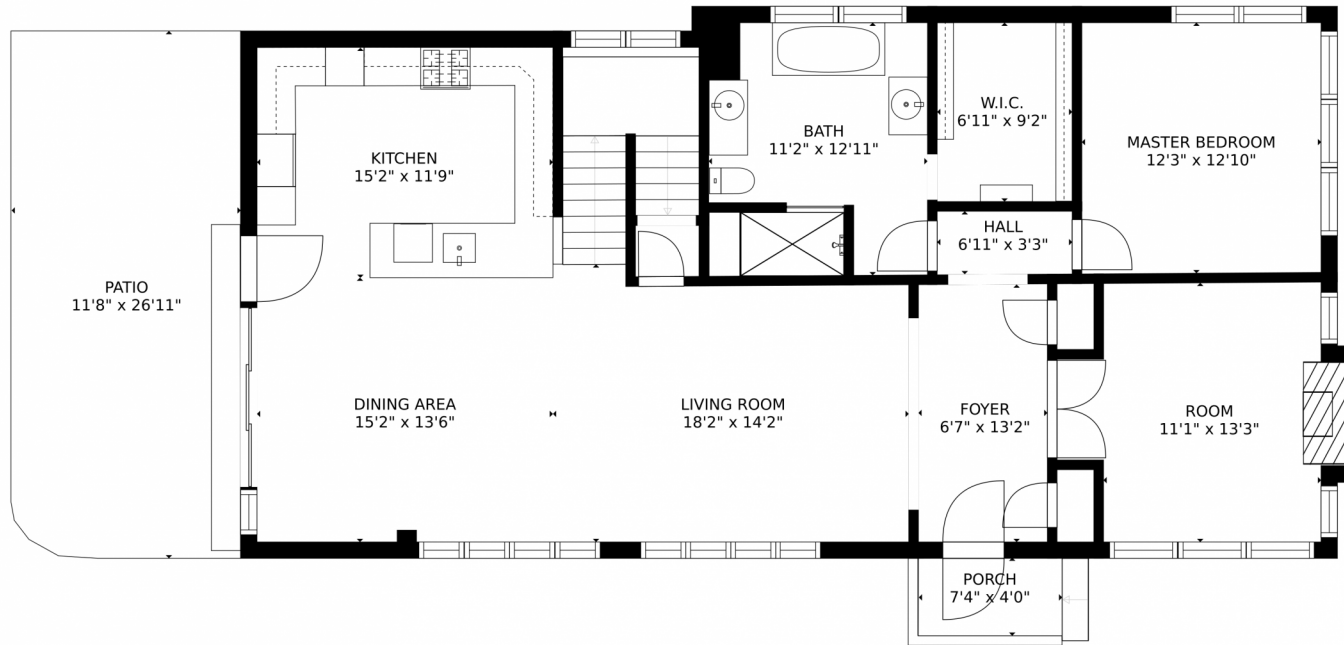
Ryan Maxwell
720-425-4021
rmaxwellbroker@gmail.com



Scan code
for more
property
details



651 Humboldt Street, Denver, CO 80218 – Main Level



GROSS INTERNAL AREA
FLOOR 1: 998 sq. ft, FLOOR 2: 1421 sq. ft
FLOOR 3: 1072 sq. ft, EXCLUDED AREAS:
PATIO: 314 sq. ft, PORCH: 35 sq. ft
TOTAL: 3490 sq. ft
SIZES AND DIMENSIONS ARE APPROXIMATE, ACTUAL MAY VARY.

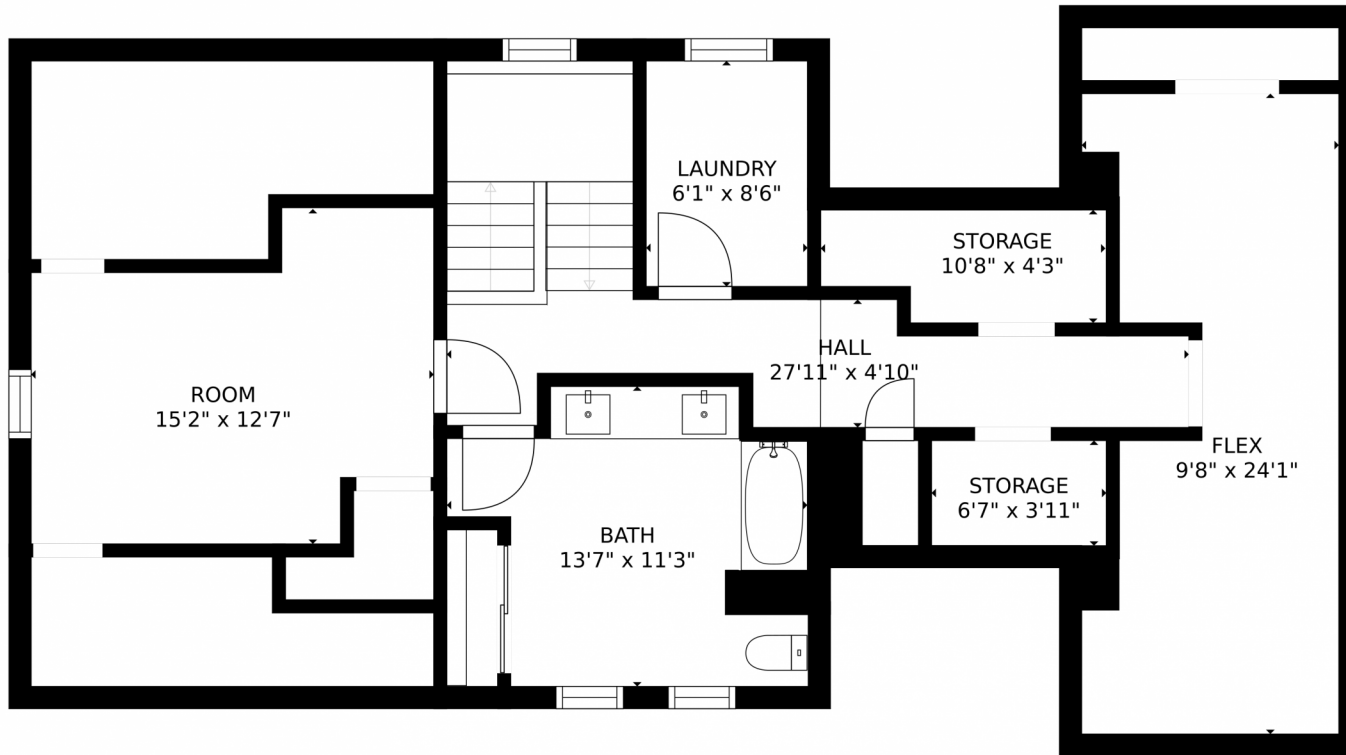
Disclaimer: Sizes and Dimensions are Approximate, Actual May Vary.



Ryan Maxwell
720-425-4021
rmaxwellbroker@gmail.com



651 Humboldt Street, Denver, CO 80218 – Upper Level



GROSS INTERNAL AREA
FLOOR 1: 998 sq. ft, FLOOR 2: 1421 sq. ft
FLOOR 3: 1072 sq. ft, EXCLUDED AREAS:
PATIO: 314 sq. ft, PORCH: 35 sq. ft
TOTAL: 3490 sq. ft
SIZES AND DIMENSIONS ARE APPROXIMATE, ACTUAL MAY VARY.

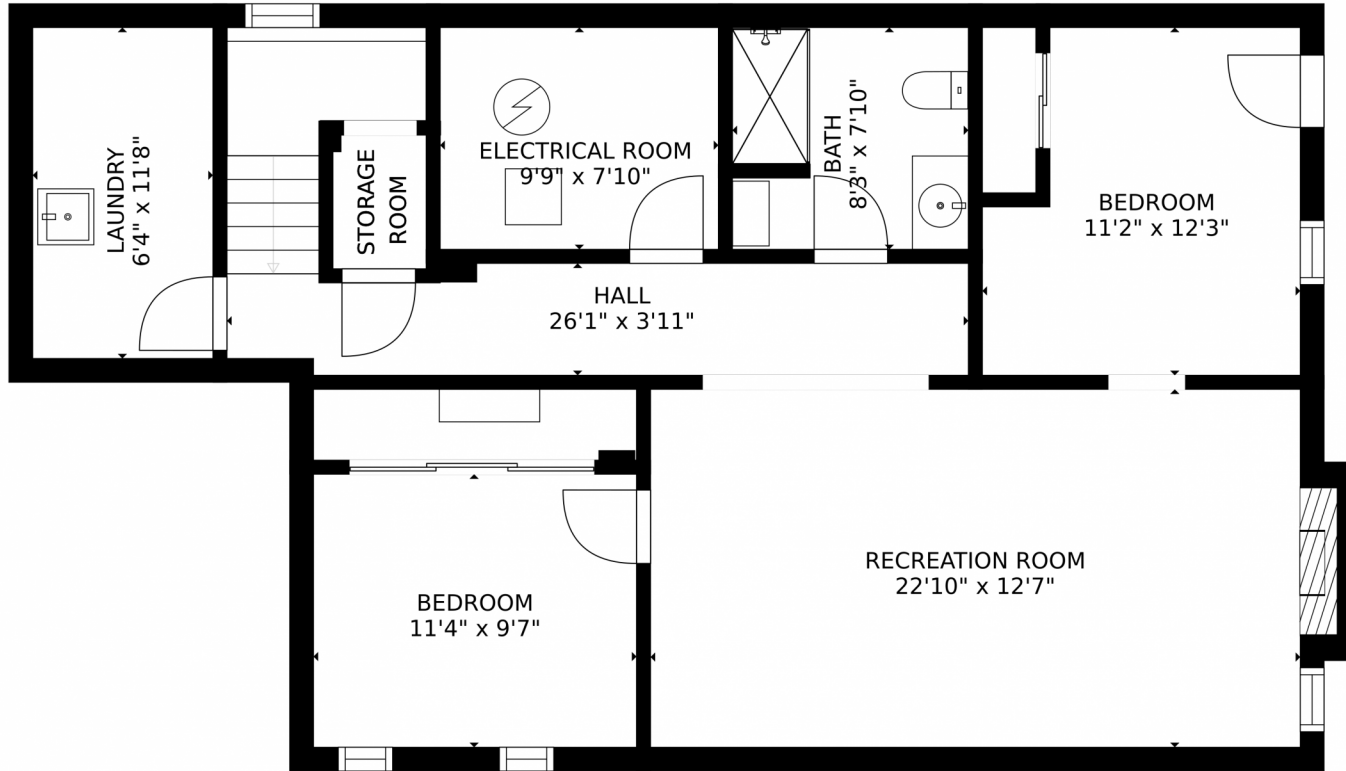
Disclaimer: Sizes and Dimensions are Approximate, Actual May Vary.



Ryan Maxwell
720-425-4021
rmaxwellbroker@gmail.com



651 Humboldt Street, Denver, CO 80218 – Lower Level



GROSS INTERNAL AREA
FLOOR 1: 998 sq. ft, FLOOR 2: 1421 sq. ft
FLOOR 3: 1072 sq. ft, EXCLUDED AREAS:
PATIO: 314 sq. ft, PORCH: 35 sq. ft
TOTAL: 3490 sq. ft
SIZES AND DIMENSIONS ARE APPROXIMATE, ACTUAL MAY VARY.

Disclaimer: Sizes and Dimensions are Approximate, Actual May Vary.



Ryan Maxwell
720-425-4021
rmaxwellbroker@gmail.com



651 Humboldt Street, Denver, CO 80218 – All Levels



GROSS INTERNAL AREA
FLOOR 1: 998 sq. ft, FLOOR 2: 1421 sq. ft
FLOOR 3: 1072 sq. ft, EXCLUDED AREAS:
PATIO: 314 sq. ft, PORCH: 35 sq. ft
TOTAL: 3490 sq. ft
SIZES AND DIMENSIONS ARE APPROXIMATE, ACTUAL MAY VARY.

Disclaimer: Sizes and Dimensions are Approximate, Actual May Vary.



Ryan Maxwell
720-425-4021
rmaxwellbroker@gmail.com

