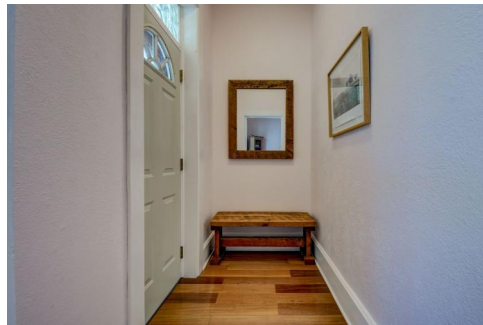




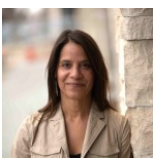
3125 Lawrence Street
Denver, CO 80205



Single Family



1960 SQFT



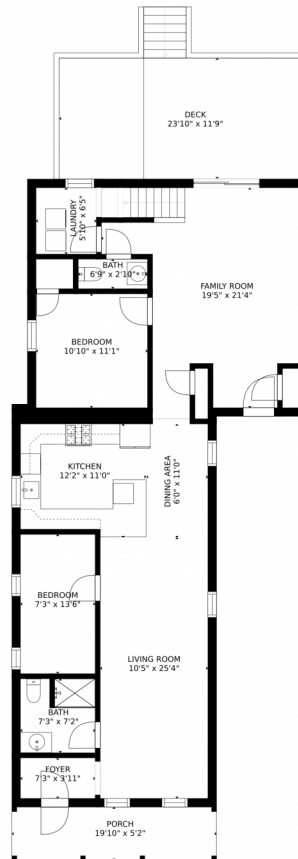
Jessica Kuhn
303-534-0484
sales@citylimits5280.com



Scan code
for more
property
details



3125 Lawrence Street, Denver, CO 80205 – 1st Floor



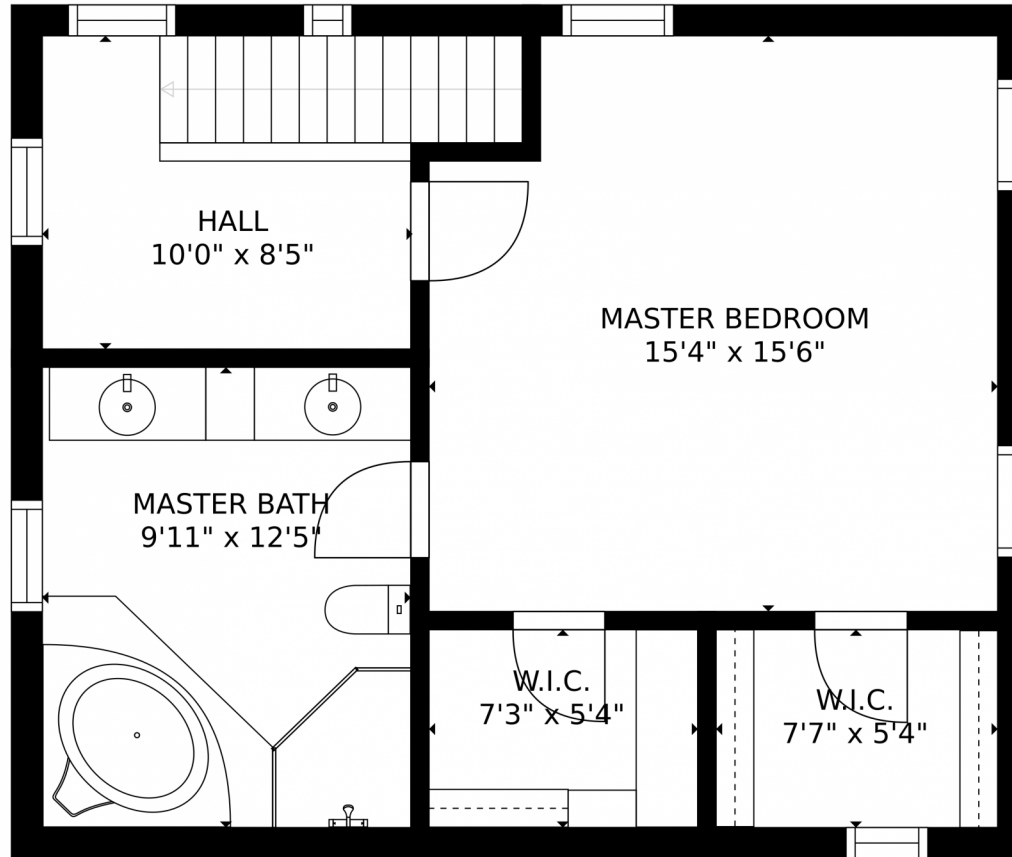
GROSS INTERNAL AREA
FLOOR 1: 1238 sq. ft, FLOOR 2: 550 sq. ft
EXCLUDED AREAS: , DECK: 280 sq. ft
PORCH: 103 sq. ft
TOTAL: 1788 sq. ft
SIZES AND DIMENSIONS ARE APPROXIMATE, ACTUAL MAY VARY.

Disclaimer: Sizes and Dimensions are Approximate, Actual May Vary.



Jessica Kuhn
303-534-0484
sales@citylimits5280.com





GROSS INTERNAL AREA
FLOOR 1: 1238 sq. ft., FLOOR 2: 550 sq. ft.
EXCLUDED AREAS: , DECK: 280 sq. ft.
PORCH: 103 sq. ft.
TOTAL: 1788 sq. ft.
SIZES AND DIMENSIONS ARE APPROXIMATE, ACTUAL MAY VARY.

Disclaimer: Sizes and Dimensions are Approximate, Actual May Vary.



Jessica Kuhn
303-534-0484
sales@citylimits5280.com



3125 Lawrence Street, Denver, CO 80205 – All Floors



GROSS INTERNAL AREA
FLOOR 1: 1238 sq. ft, FLOOR 2: 550 sq. ft
EXCLUDED AREAS: , DECK: 280 sq. ft
PORCH: 103 sq. ft
TOTAL: 1788 sq. ft
SIZES AND DIMENSIONS ARE APPROXIMATE, ACTUAL MAY VARY.

Disclaimer: Sizes and Dimensions are Approximate, Actual May Vary.



Jessica Kuhn
303-534-0484
sales@citylimits5280.com



Scan code
for more
property
details