



8916 W Geddes Place
Littleton, CO 80128

MLS # 5105740
PRICE \$675,000



Single Family



3198 SQFT



4 Beds



2/2 Baths



2 Car



0.2 Acre

PROPERTY DETAILS

This Well Maintained 4 Bedroom 4 Bath Stony Creek Home is Walking Distance to Stony Creek Elementary & Deer Creek Middle School & 2 Neighborhood Parks! Original Owner has Maintained the Home Meticulously. Outside has new James Hardie Siding Posts & Soffits (2020), Professional Landscaping, Leafguard Gutters, Brick Exterior Front and Back on 1st level, Covered Back Patio, Firepit Area, New Garage Door (2021) and Champion Windows. On the Main Level there is plenty of space for Entertaining with 2 Living Areas, Formal Dining Area, Updated Kitchen with Granite Counters and Stainless Steel Appliances. There is also an Eat in Dining Area, Family Room has Wood Stove Insert and also Half Bath on the Main Level. Upstairs is a Large Primary Bedroom (12x18) with Crown Moulding and Freshly Painted with Private Bath and Custom Walk in Closet. 3 Other Bedrooms are Upstairs as well as a Full Bathroom. New 6 Panel Doors and New Trim were recently installed upstairs. The Seller has also installed new Lighting Fixtures throughout the Home. The Basement is Partially Finished and Buyers can add their own finishing touches to make it just the way they want!
Pride of Ownership Abounds. All Major Systems have been updated in the last 10 years! The Hard Work is Done for You.



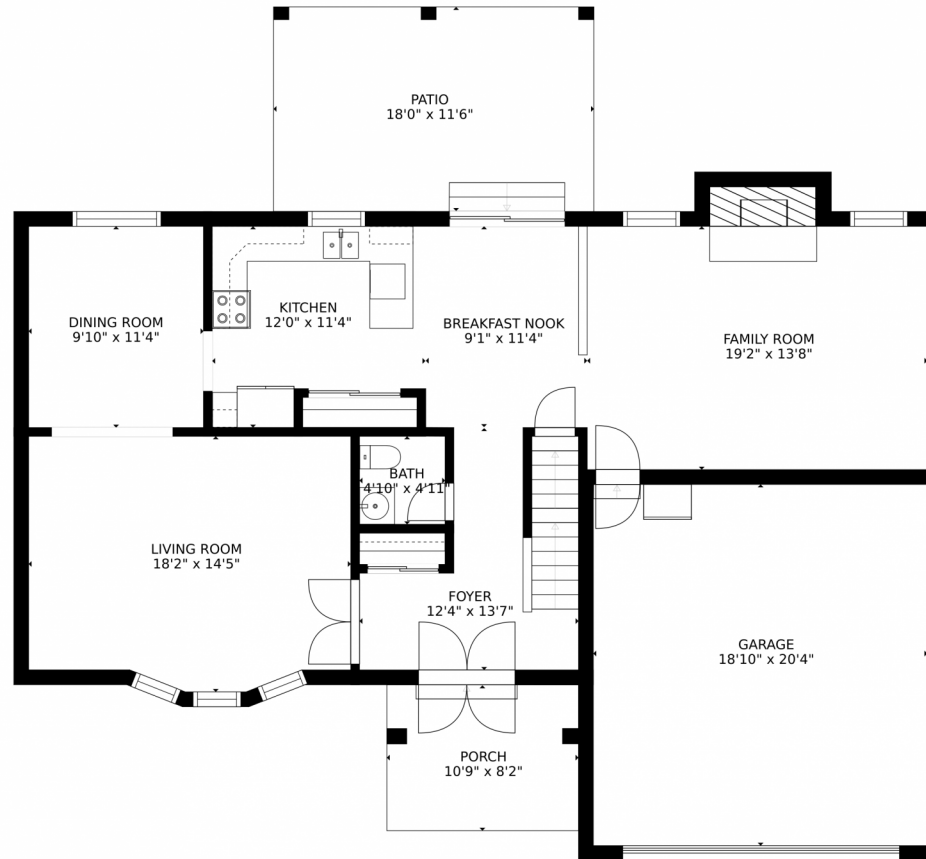
Kimberly Jones
720-935-4871
kimberlyjones@rmpro.net



Scan code
for more
property
details



8916 W Geddes Place, Littleton, CO 80128 – Main



GROSS INTERNAL AREA
FLOOR 1: 773 sq. ft. FLOOR 2: 1063 sq. ft.
FLOOR 3: 966 sq. ft. EXCLUDED AREAS:
PATIO: 208 sq. ft. PORCH: 89 sq. ft.
GARAGE: 382 sq. ft.
TOTAL: 2802 sq. ft.
SIZES AND DIMENSIONS ARE APPROXIMATE, ACTUAL MAY VARY.

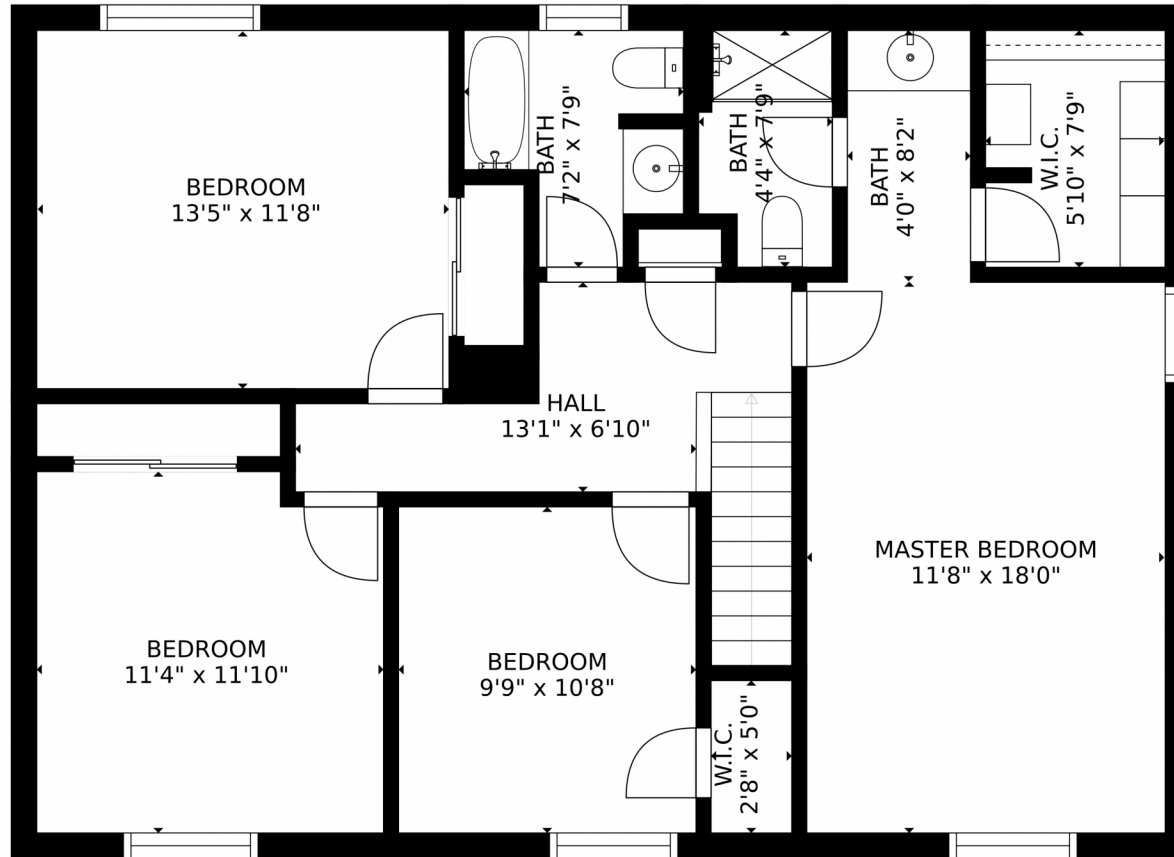
Disclaimer: Sizes and Dimensions are Approximate, Actual May Vary.



Kimberly Jones
720-935-4871
kimberlyjones@rmpro.net



8916 W Geddes Place, Littleton, CO 80128 – 2nd Level



GROSS INTERNAL AREA
FLOOR 1: 773 sq. ft. FLOOR 2: 1063 sq. ft.
FLOOR 3: 966 sq. ft. EXCLUDED AREAS:
PATIO: 208 sq. ft. PORCH: 89 sq. ft.
GARAGE: 382 sq. ft.
TOTAL: 2802 sq. ft.
SIZES AND DIMENSIONS ARE APPROXIMATE, ACTUAL MAY VARY.

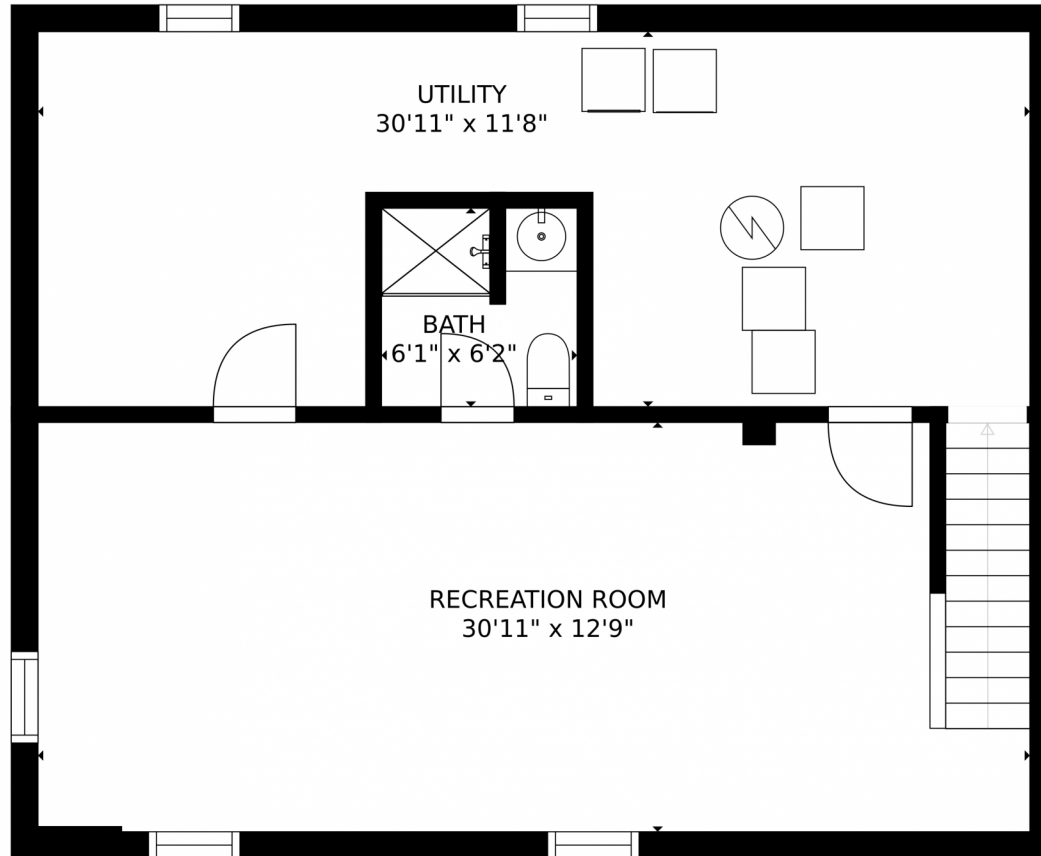
Disclaimer: Sizes and Dimensions are Approximate, Actual May Vary.



Kimberly Jones
720-935-4871
kimberlyjones@rmpro.net



Scan code
for more
property
details



GROSS INTERNAL AREA
FLOOR 1: 773 sq. ft. FLOOR 2: 1063 sq. ft.
FLOOR 3: 966 sq. ft. EXCLUDED AREAS:
PATIO: 208 sq. ft. PORCH: 89 sq. ft.
GARAGE: 382 sq. ft.
TOTAL: 2802 sq. ft.
SIZES AND DIMENSIONS ARE APPROXIMATE, ACTUAL MAY VARY.

Disclaimer: Sizes and Dimensions are Approximate, Actual May Vary.



Kimberly Jones
720-935-4871
kimberlyjones@rmpro.net



8916 W Geddes Place, Littleton, CO 80128 – All Levels



GROSS INTERNAL AREA
FLOOR 1: 773 sq. ft, FLOOR 2: 1063 sq. ft
FLOOR 3: 966 sq. ft, EXCLUDED AREAS:
PATIO: 208 sq. ft, PORCH: 89 sq. ft
GARAGE: 382 sq. ft
TOTAL: 2802 sq. ft
SIZES AND DIMENSIONS ARE APPROXIMATE, ACTUAL MAY VARY.

Disclaimer: Sizes and Dimensions are Approximate, Actual May Vary.



Kimberly Jones
720-935-4871
kimberlyjones@rmpro.net

