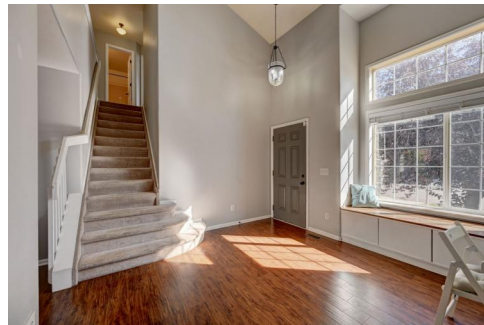


COMPASS

3320 Osprey Ridge Drive
Colorado Springs, CO 80916



Single Family



1700 SQFT



Persy Sample
330-807-8387
persy.sample@compass.com



Scan code
for more
property
details



3320 Osprey Ridge Drive, Colorado Springs, CO 80916 — All Levels



GROSS INTERNAL AREA
FLOOR 1: 620 sq. ft. FLOOR 2: 718 sq. ft.
FLOOR 3: 882 sq. ft. EXCLUDED AREAS:
PATIO: 243 sq. ft. PORCH: 10 sq. ft.
GARAGE: 376 sq. ft.
TOTAL: 2220 sq. ft.
SIZES AND DIMENSIONS ARE APPROXIMATE, ACTUAL MAY VARY.

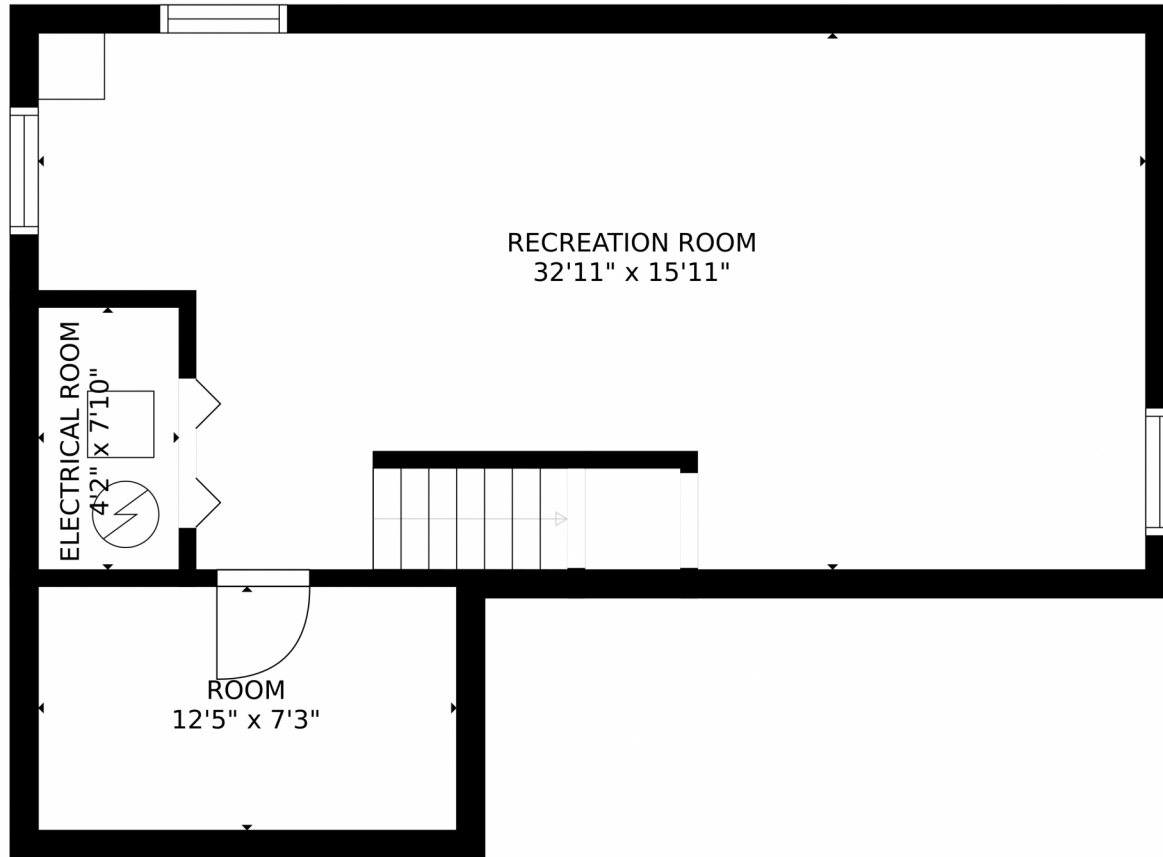
Disclaimer: Sizes and Dimensions are Approximate, Actual May Vary.



Persy Sample
330-807-8387
persy.sample@compass.com



3320 Osprey Ridge Drive, Colorado Springs, CO 80916 — Lower Level



GROSS INTERNAL AREA
FLOOR 1: 620 sq. ft. FLOOR 2: 718 sq. ft.
FLOOR 3: 882 sq. ft. EXCLUDED AREAS:
PATIO: 243 sq. ft. PORCH: 10 sq. ft.
GARAGE: 376 sq. ft.
TOTAL: 2220 sq. ft.
SIZES AND DIMENSIONS ARE APPROXIMATE, ACTUAL MAY VARY.

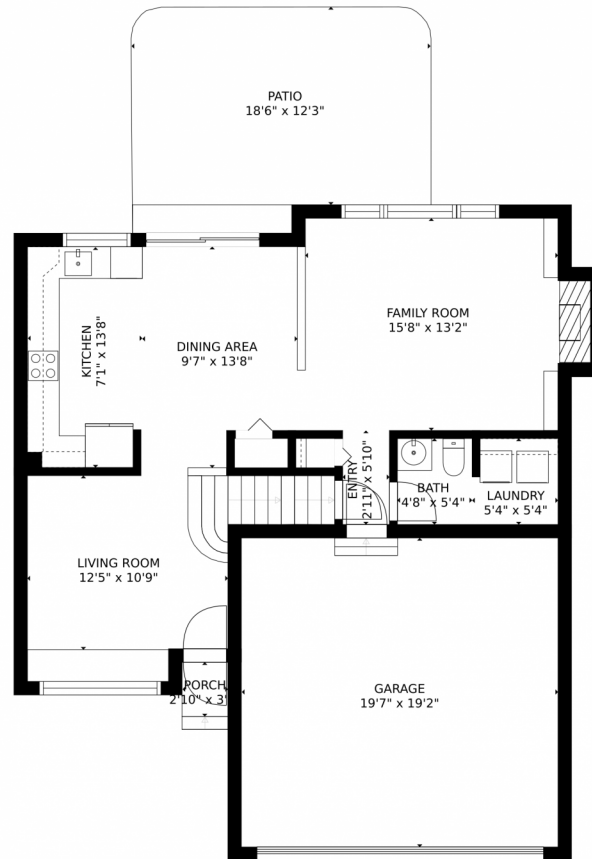
Disclaimer: Sizes and Dimensions are Approximate, Actual May Vary.



Persy Sample
330-807-8387
persy.sample@compass.com



3320 Osprey Ridge Drive, Colorado Springs, CO 80916 — Main Level



GROSS INTERNAL AREA
FLOOR 1: 620 sq. ft. FLOOR 2: 718 sq. ft.
FLOOR 3: 882 sq. ft. EXCLUDED AREAS:
PATIO: 243 sq. ft. PORCH: 10 sq. ft.
GARAGE: 376 sq. ft.
TOTAL: 2220 sq. ft.
SIZES AND DIMENSIONS ARE APPROXIMATE, ACTUAL MAY VARY.

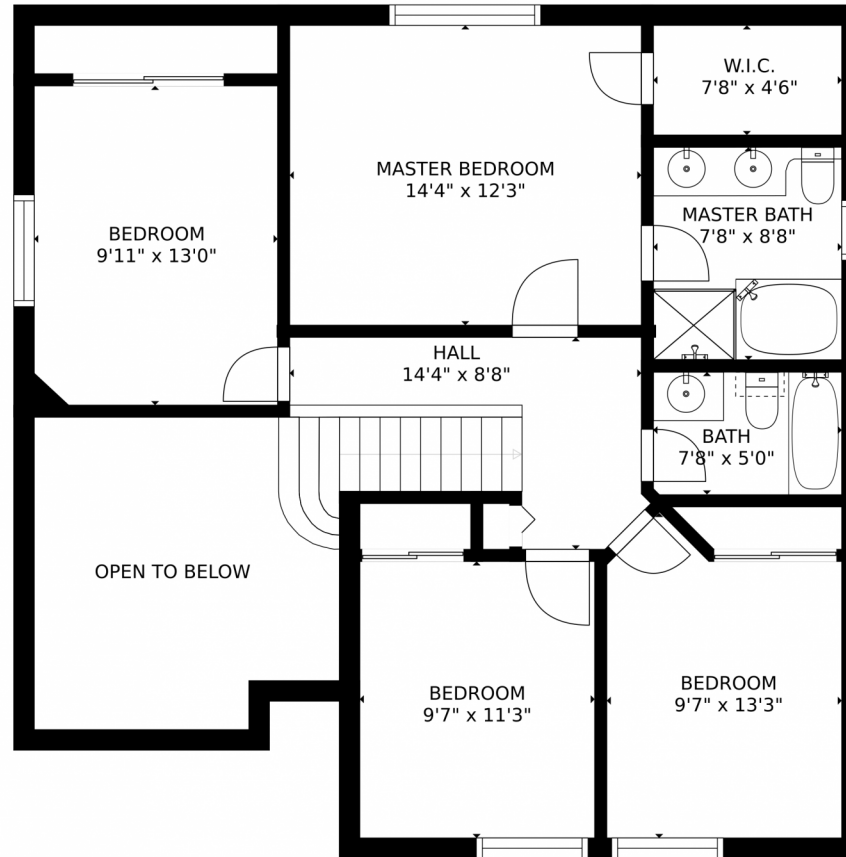
Disclaimer: Sizes and Dimensions are Approximate, Actual May Vary.



Persy Sample
330-807-8387
persy.sample@compass.com



3320 Osprey Ridge Drive, Colorado Springs, CO 80916 – 2nd Level



GROSS INTERNAL AREA
FLOOR 1: 620 sq. ft. FLOOR 2: 718 sq. ft.
FLOOR 3: 882 sq. ft. EXCLUDED AREAS:
PATIO: 243 sq. ft. PORCH: 10 sq. ft.
GARAGE: 376 sq. ft.
TOTAL: 2220 sq. ft.
SIZES AND DIMENSIONS ARE APPROXIMATE, ACTUAL MAY VARY.

Disclaimer: Sizes and Dimensions are Approximate, Actual May Vary.



Persy Sample
330-807-8387
persy.sample@compass.com

