




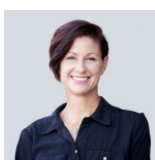
 Single Family
  3574 SQFT
  5 Beds
  1/1 Baths
  2 Car
  0.15 Acre

PROPERTY DETAILS

Here is your opportunity to live in the coveted Saddle Ridge neighborhood. Home boasts a great open layout with formal and informal spaces, a main floor bedroom and 3 bedrooms upstairs. Seller has taken great care of the home with updates including granite countertops, stainless steel appliances, new windows, roof and garage door. Basement is partially finished and waiting for your personal touch. Sellers also added central air conditioning for those warm summer days. As an added bonus you get access to the neighborhood pool. Come make this home yours today!



Melanie Beard
 720-552-7148
 Melanieb@elevatedrealestate.com



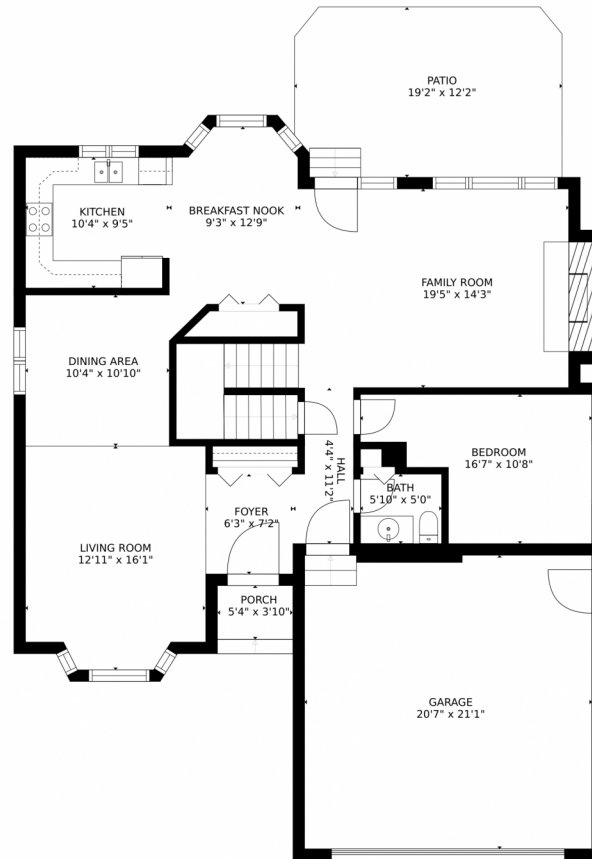
Jay Kalinski
 303-489-1050
 jaykalinski@gmail.com



Scan code
 for more
 property
 details



696 W Sagebrush Drive, Louisville, CO 80027 – Main level



GROSS INTERNAL AREA
FLOOR 1: 1091 sq. ft. FLOOR 2: 1201 sq. ft.
FLOOR 3: 976 sq. ft. EXCLUDED AREAS:
PATIO: 229 sq. ft. PORCH: 21 sq. ft.
GARAGE: 434 sq. ft. BALCONY: 37 sq. ft.
TOTAL: 3269 sq. ft.
SIZES AND DIMENSIONS ARE APPROXIMATE, ACTUAL MAY VARY.

Disclaimer: Sizes and Dimensions are Approximate, Actual May Vary.



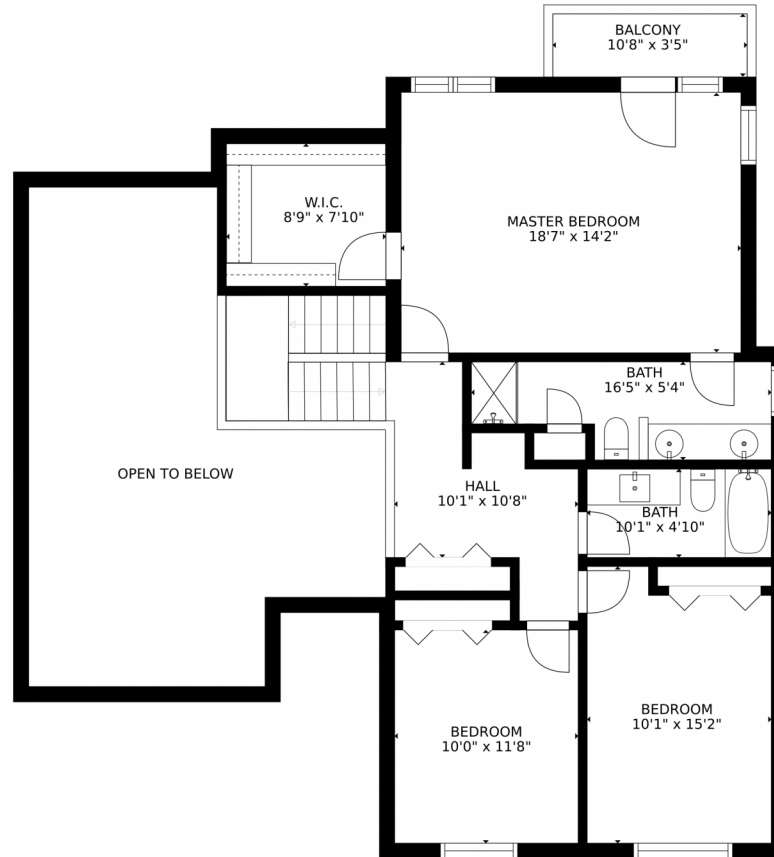
Melanie Beard
720-552-7148
Melanieb@elevatedrealestate.com



Jay Kalinski
303-489-1050
jaykalinski@gmail.com



696 W Sagebrush Drive, Louisville, CO 80027 – Upper Level



GROSS INTERNAL AREA
FLOOR 1: 1091 sq. ft. FLOOR 2: 1201 sq. ft.
FLOOR 3: 976 sq. ft. EXCLUDED AREAS:
PATIO: 229 sq. ft. PORCH: 21 sq. ft.
GARAGE: 434 sq. ft. BALCONY: 37 sq. ft.
TOTAL: 3269 sq. ft.
SIZES AND DIMENSIONS ARE APPROXIMATE, ACTUAL MAY VARY.

Disclaimer: Sizes and Dimensions are Approximate, Actual May Vary.



Melanie Beard
720-552-7148
Melanieb@elevatedrealestate.com



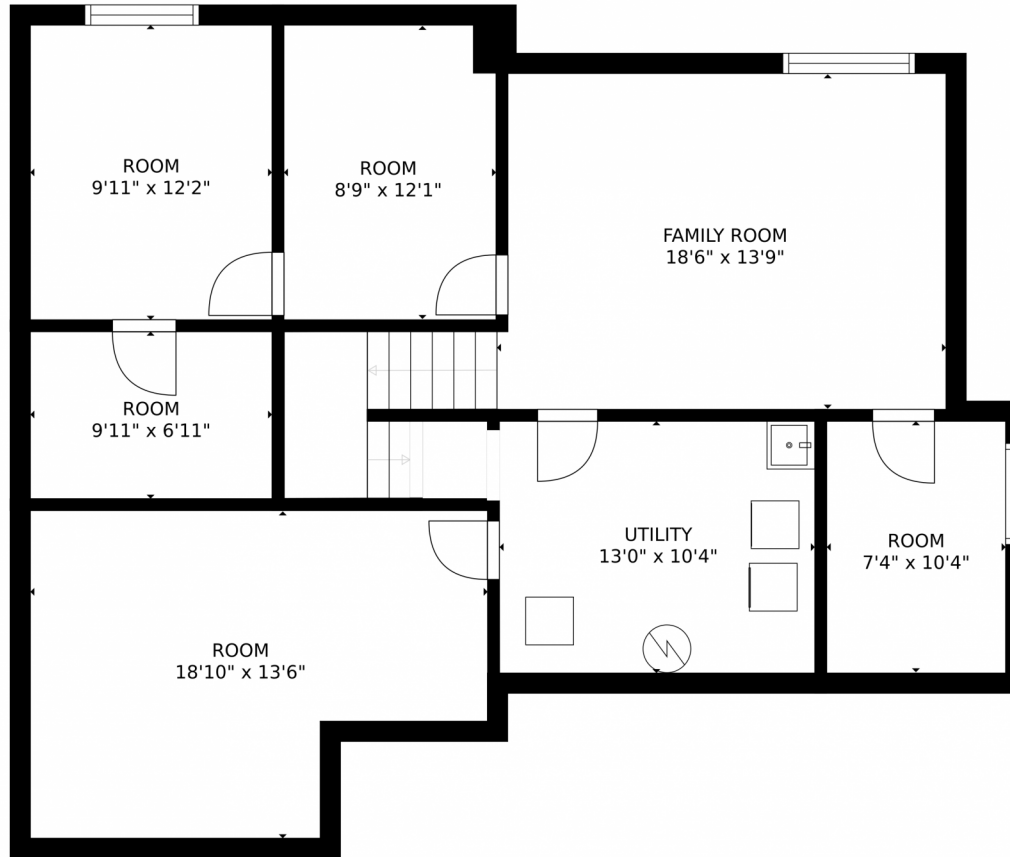
Jay Kalinski
303-489-1050
jaykalinski@gmail.com



Scan code
for more
property
details



696 W Sagebrush Drive, Louisville, CO 80027 – Lower Level



GROSS INTERNAL AREA
FLOOR 1: 1091 sq. ft. FLOOR 2: 1201 sq. ft.
FLOOR 3: 976 sq. ft. EXCLUDED AREAS:
PATIO: 229 sq. ft. PORCH: 21 sq. ft.
GARAGE: 434 sq. ft. BALCONY: 37 sq. ft.
TOTAL: 3269 sq. ft.
SIZES AND DIMENSIONS ARE APPROXIMATE, ACTUAL MAY VARY.

Disclaimer: Sizes and Dimensions are Approximate, Actual May Vary.



Melanie Beard
720-552-7148
Melanieb@elevatedrealestate.com



Jay Kalinski
303-489-1050
jaykalinski@gmail.com



696 W Sagebrush Drive, Louisville, CO 80027 – All Levels



GROSS INTERNAL AREA
FLOOR 1: 1091 sq. ft. FLOOR 2: 1201 sq. ft.
FLOOR 3: 976 sq. ft. EXCLUDED AREAS:
PATIO: 229 sq. ft. PORCH: 21 sq. ft.
GARAGE: 434 sq. ft. BALCONY: 37 sq. ft.
TOTAL: 3269 sq. ft.
SIZES AND DIMENSIONS ARE APPROXIMATE, ACTUAL MAY VARY.

Disclaimer: Sizes and Dimensions are Approximate, Actual May Vary.



Melanie Beard
720-552-7148
Melanieb@elevatedrealestate.com



Jay Kalinski
303-489-1050
jaykalinski@gmail.com



Scan code
for more
property
details

