



Single Family



1979 SQFT



**Taylor Haas**

303-665-7368

taylorh@coloradorpm.com

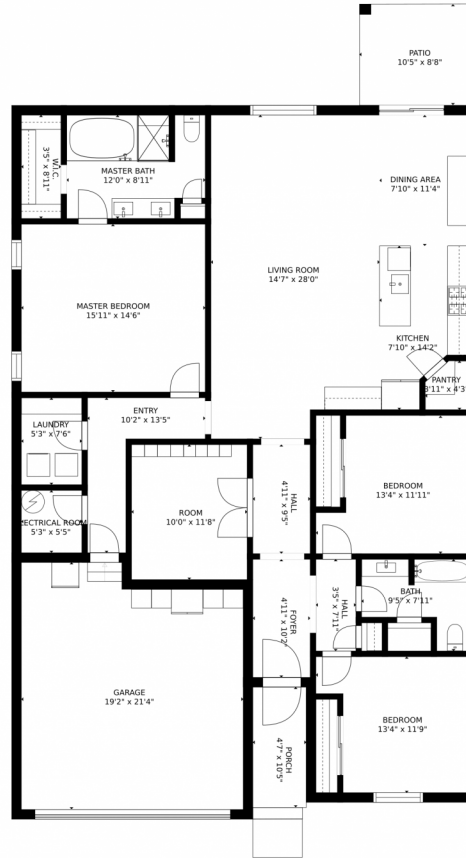
<https://www.coloradorpm.com/available-rental-properties-denver>



Scan code  
for more  
property  
details



# 2150 Kerry Street, Mead, CO 80542 – Floor Plan



GROSS INTERNAL AREA  
FLOOR 1: 1825 sq. ft. EXCLUDED AREAS:  
PATIO: 91 sq. ft. PORCH: 48 sq. ft.  
GARAGE: 384 sq. ft.  
TOTAL: 1825 sq. ft.

SIZES AND DIMENSIONS ARE APPROXIMATE, ACTUAL MAY VARY.

Disclaimer: Sizes and Dimensions are Approximate, Actual May Vary.



**Taylor Haas**

303-665-7368

taylorh@coloradorpm.com

<https://www.coloradorpm.com/available-rental-properties-denver>



Scan code  
for more  
property  
details

