


 Single Family

 1410 SQFT

 2 Beds

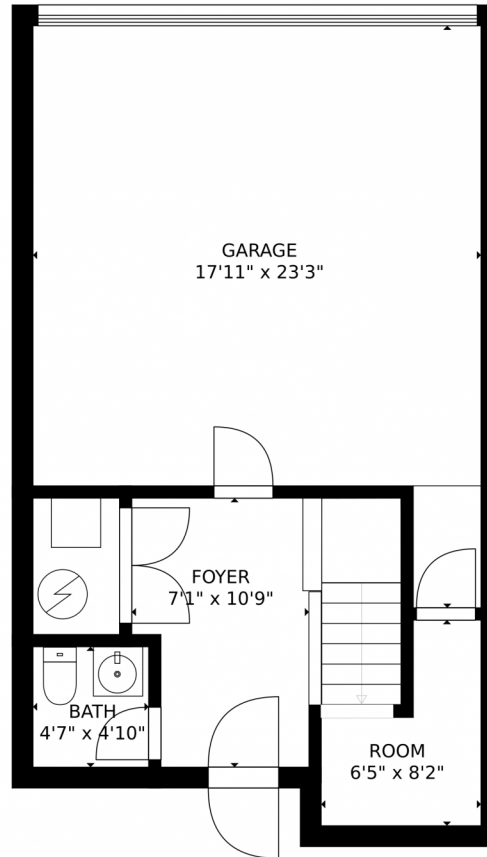
 4 Baths



Taylor Haas
303-665-7368
taylorh@coloradorpm.com
<https://www.coloradorpm.com/available-rental-properties-denv>



1463 30th Street, Denver, CO 80205 – First Floor



GROSS INTERNAL AREA
FLOOR 1: 191 sq. ft, FLOOR 2: 544 sq. ft
FLOOR 3: 544 sq. ft, FLOOR 4: 99 sq. ft
EXCLUDED AREAS: GARAGE: 341 sq. ft
TERRACE: 416 sq. ft
TOTAL: 1378 sq. ft
SIZES AND DIMENSIONS ARE APPROXIMATE, ACTUAL MAY VARY.

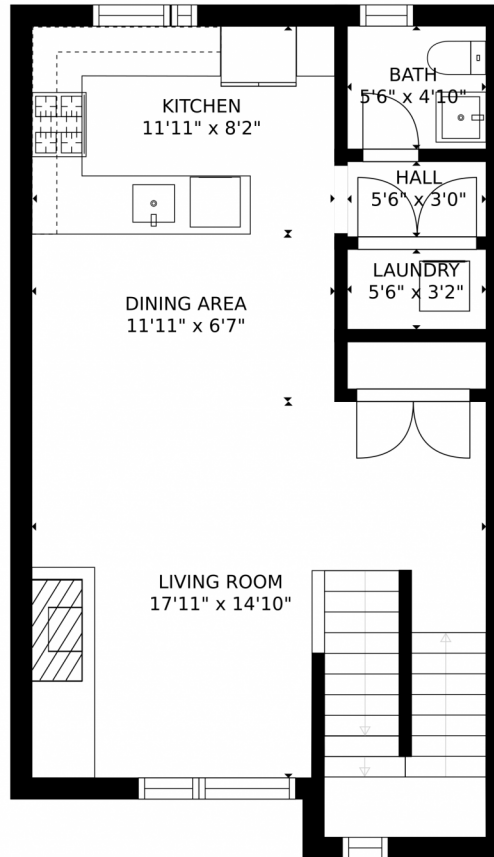
Disclaimer: Sizes and Dimensions are Approximate, Actual May Vary.



Taylor Haas
303-665-7368
taylorh@coloradorpm.com
<https://www.coloradorpm.com/available-rental-properties-denver>



1463 30th Street, Denver, CO 80205 – Second Floor



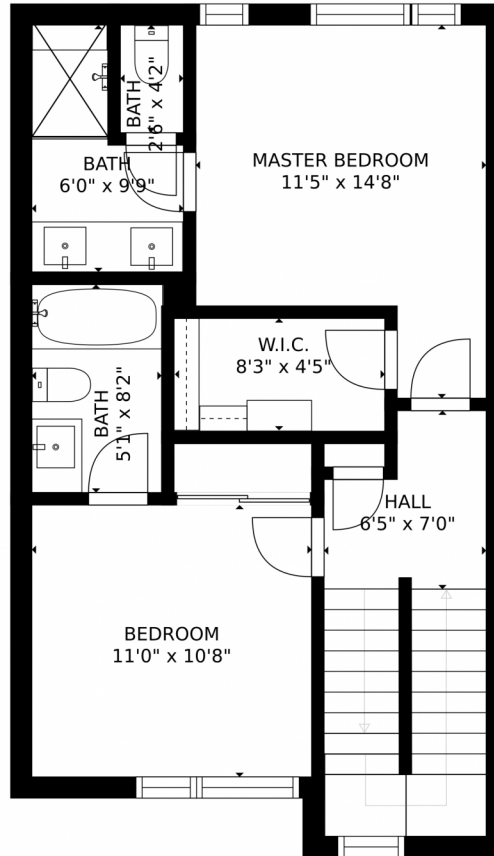
GROSS INTERNAL AREA
FLOOR 1: 191 sq. ft, FLOOR 2: 544 sq. ft
FLOOR 3: 544 sq. ft, FLOOR 4: 99 sq. ft
EXCLUDED AREAS: GARAGE: 341 sq. ft
TERRACE: 416 sq. ft
TOTAL: 1378 sq. ft
SIZES AND DIMENSIONS ARE APPROXIMATE, ACTUAL MAY VARY.

Disclaimer: Sizes and Dimensions are Approximate, Actual May Vary.



Taylor Haas
303-665-7368
taylorh@coloradorpm.com
<https://www.coloradorpm.com/available-rental-properties-denver>





GROSS INTERNAL AREA
FLOOR 1: 191 sq. ft. FLOOR 2: 544 sq. ft
FLOOR 3: 544 sq. ft. FLOOR 4: 99 sq. ft
EXCLUDED AREAS: GARAGE: 341 sq. ft
TERRACE: 416 sq. ft
TOTAL: 1378 sq. ft
SIZES AND DIMENSIONS ARE APPROXIMATE, ACTUAL MAY VARY.

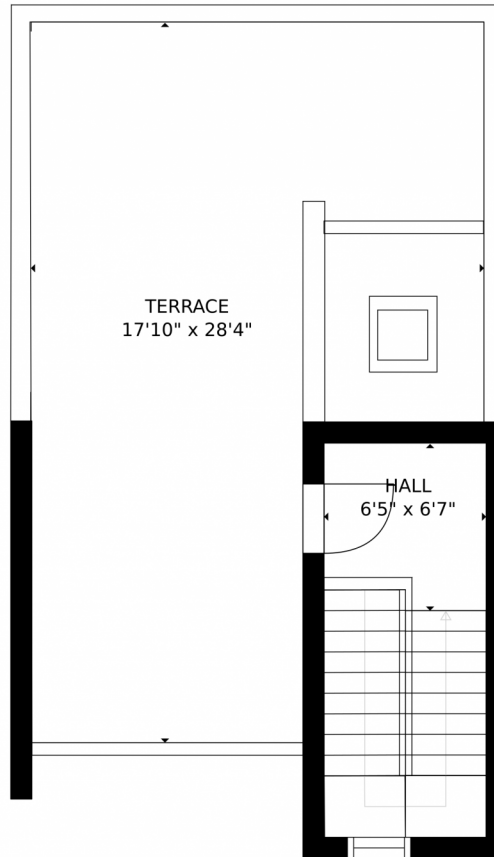
Disclaimer: Sizes and Dimensions are Approximate, Actual May Vary.



Taylor Haas
303-665-7368
taylorh@coloradorpm.com
<https://www.coloradorpm.com/available-rental-properties-denv>



Scan code
for more
property
details



GROSS INTERNAL AREA
FLOOR 1: 191 sq. ft, FLOOR 2: 544 sq. ft
FLOOR 3: 544 sq. ft, FLOOR 4: 99 sq. ft
EXCLUDED AREAS: GARAGE: 341 sq. ft
TERRACE: 416 sq. ft
TOTAL: 1378 sq. ft
SIZES AND DIMENSIONS ARE APPROXIMATE, ACTUAL MAY VARY.

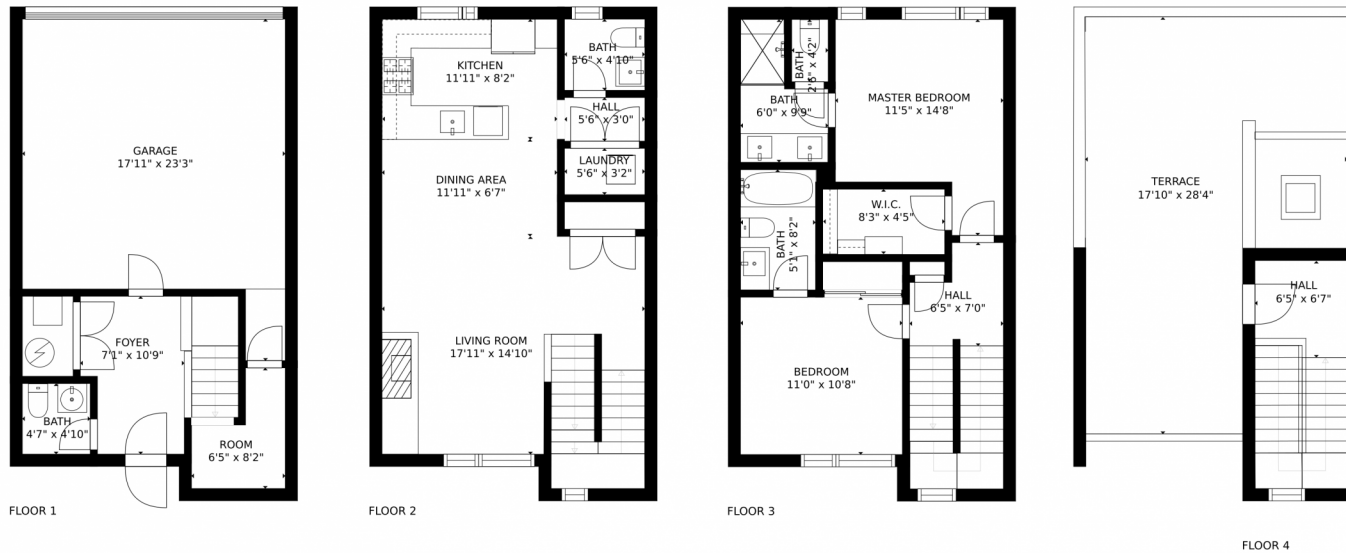
Disclaimer: Sizes and Dimensions are Approximate, Actual May Vary.



Taylor Haas
303-665-7368
taylorh@coloradorpm.com
<https://www.coloradorpm.com/available-rental-properties-denver>



1463 30th Street, Denver, CO 80205 – All Levels



GROSS INTERNAL AREA
FLOOR 1: 191 sq. ft. FLOOR 2: 544 sq. ft.
FLOOR 3: 544 sq. ft. FLOOR 4: 99 sq. ft.
EXCLUDED AREAS: GARAGE: 341 sq. ft.
TERRACE: 416 sq. ft.
TOTAL: 1378 sq. ft.
SIZES AND DIMENSIONS ARE APPROXIMATE, ACTUAL MAY VARY.

Disclaimer: Sizes and Dimensions are Approximate, Actual May Vary.



Taylor Haas
303-665-7368
taylorh@coloradorpm.com
<https://www.coloradorpm.com/available-rental-properties-denv>



Scan code
for more
property
details