



2452 S Chase Lane
 Lakewood, CO 80227
 COMMUNITY: Thraemoor

MLS # 8159088
 PRICE \$949,000



Single Family



5110 SQFT



3 Beds



4/1 Baths



5 Car



0.44 Acre

PROPERTY DETAILS

Sprawling ranch with 5 car garage on .44 acre lot and 5,110 of square feet!



Danielle Marcus

303-669-7974

danielle@themarcusteam.com

<https://www.themarcusteam.com>



Scan code
 for more
 property
 details



2452 S Chase Lane, Lakewood, CO 80227 – All Levels



GROSS INTERNAL AREA
FLOOR 1: 1987 sq. ft, FLOOR 2: 2826 sq. ft
EXCLUDED AREAS: , PATIO: 477 sq. ft
PORCH: 150 sq. ft, GARAGE: 1142 sq. ft
TOTAL: 4813 sq. ft
SIZES AND DIMENSIONS ARE APPROXIMATE, ACTUAL MAY VARY.

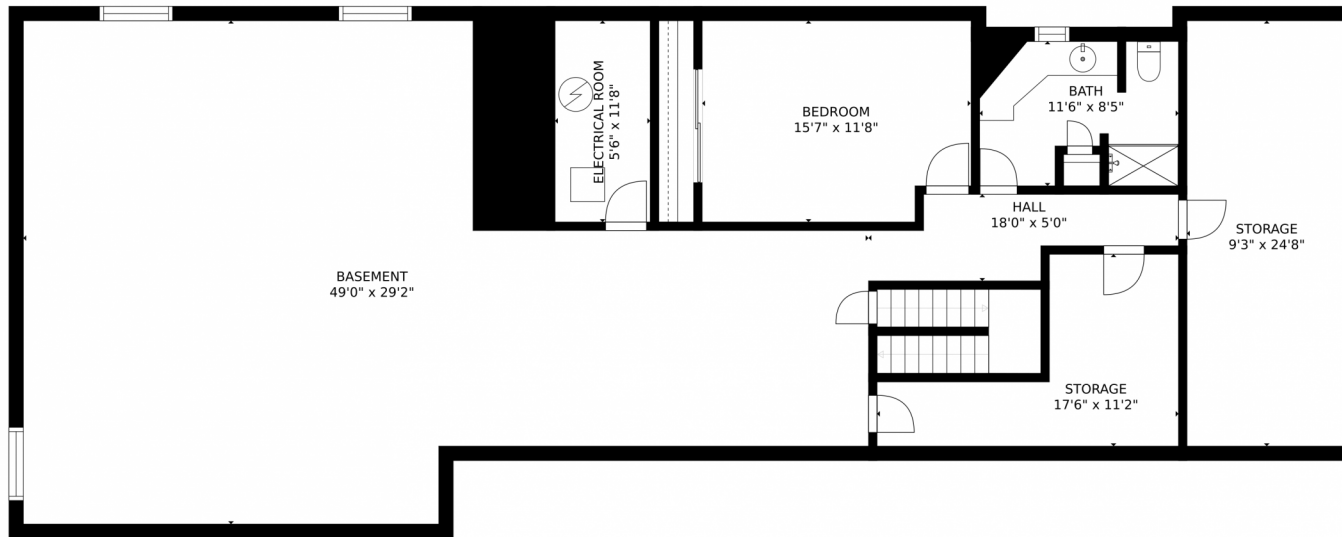
Disclaimer: Sizes and Dimensions are Approximate, Actual May Vary.



Danielle Marcus
303-669-7974
danielle@themarkusteam.com
<https://www.themarkusteam.com>



2452 S Chase Lane, Lakewood, CO 80227 – Basement



GROSS INTERNAL AREA
FLOOR 1: 1987 sq. ft, FLOOR 2: 2826 sq. ft
EXCLUDED AREAS: , PATIO: 477 sq. ft
PORCH: 150 sq. ft, GARAGE: 1142 sq. ft
TOTAL: 4813 sq. ft
SIZES AND DIMENSIONS ARE APPROXIMATE, ACTUAL MAY VARY.

Disclaimer: Sizes and Dimensions are Approximate, Actual May Vary.



Danielle Marcus

303-669-7974

danielle@themarcusteam.com

<https://www.themarcusteam.com>



Scan code
for more
property
details





GROSS INTERNAL AREA
FLOOR 1: 1987 sq. ft, FLOOR 2: 2826 sq. ft
EXCLUDED AREAS: , PATIO: 477 sq. ft
PORCH: 150 sq. ft, GARAGE: 1142 sq. ft
TOTAL: 4813 sq. ft
SIZES AND DIMENSIONS ARE APPROXIMATE, ACTUAL MAY VARY.

Disclaimer: Sizes and Dimensions are Approximate, Actual May Vary.



Danielle Marcus
303-669-7974
danielle@themarkusteam.com
<https://www.themarkusteam.com>

