



Condominium



1487 SQFT



**Taylor Haas**

303-665-7368

taylorh@coloradorpm.com

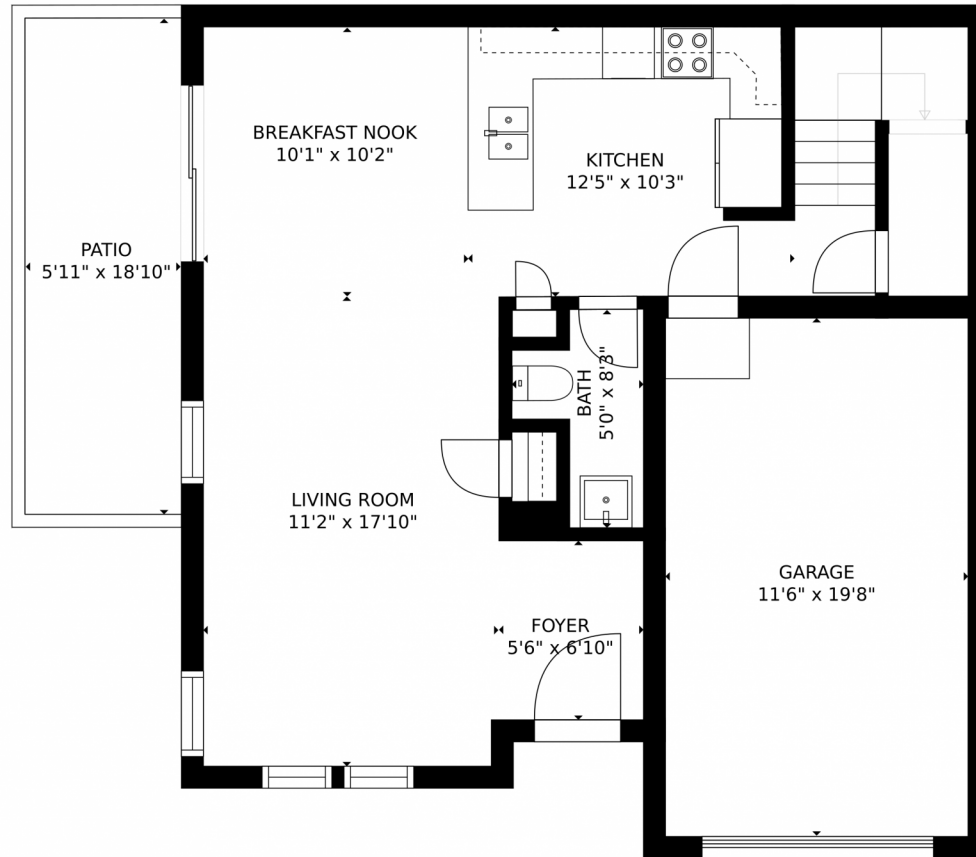
<https://www.coloradorpm.com/available-rental-properties-denver>



Scan code  
for more  
property  
details



# 4638 Flower Street, Wheat Ridge, CO 80033 – 1st Floor



GROSS INTERNAL AREA  
FLOOR 1: 585 sq. ft., FLOOR 2: 783 sq. ft.  
EXCLUDED AREAS: , PATIO: 112 sq. ft.  
GARAGE: 226 sq. ft.  
TOTAL: 1368 sq. ft.  
SIZES AND DIMENSIONS ARE APPROXIMATE, ACTUAL MAY VARY.

Disclaimer: Sizes and Dimensions are Approximate, Actual May Vary.



**Taylor Haas**

303-665-7368

taylorh@coloradorpm.com

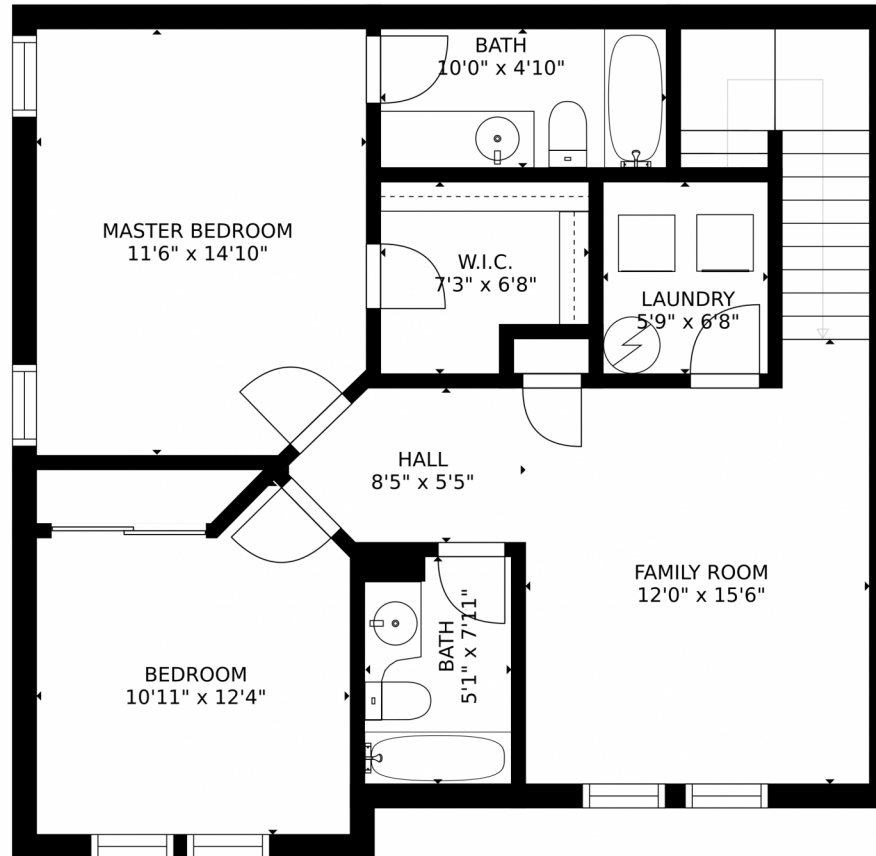
<https://www.coloradorpm.com/available-rental-properties-denver>



Scan code  
for more  
property  
details



4638 Flower Street, Wheat Ridge, CO 80033 – 2nd Floor



GROSS INTERNAL AREA  
FLOOR 1: 585 sq. ft, FLOOR 2: 783 sq. ft  
EXCLUDED AREAS: , PATIO: 112 sq. ft  
GARAGE: 226 sq. ft  
TOTAL: 1368 sq. ft  
SIZES AND DIMENSIONS ARE APPROXIMATE, ACTUAL MAY VARY.

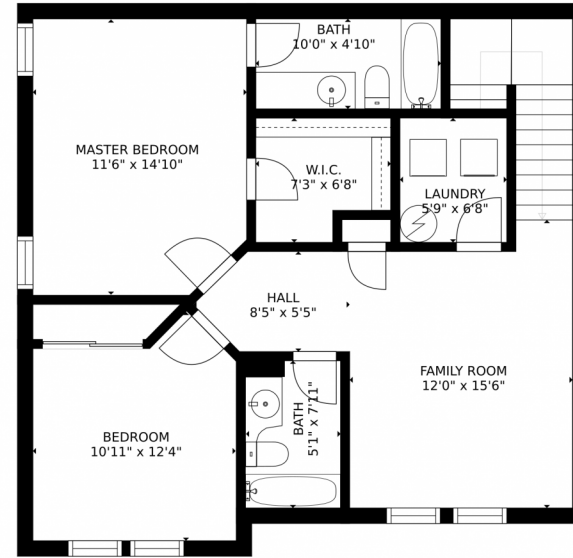
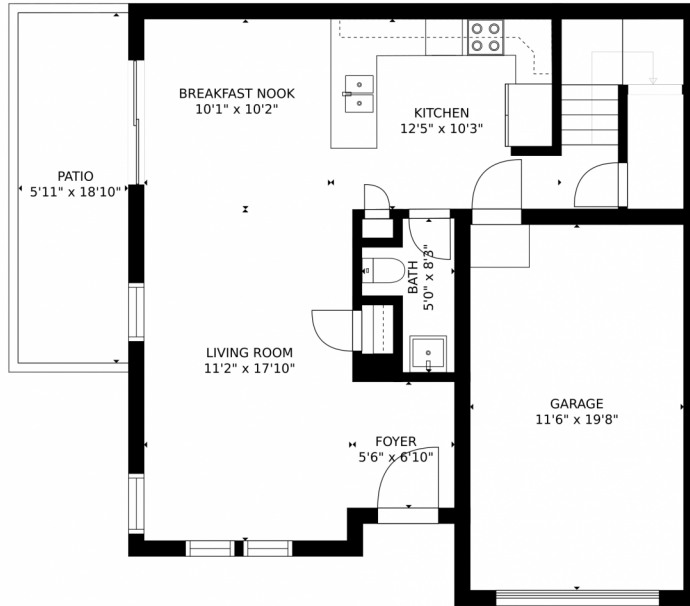
Disclaimer: Sizes and Dimensions are Approximate, Actual May Vary.



**Taylor Haas**  
303-665-7368  
taylorh@coloradorpm.com  
<https://www.coloradorpm.com/available-rental-properties-denver>



# 4638 Flower Street, Wheat Ridge, CO 80033 – All Floors



GROSS INTERNAL AREA  
FLOOR 1: 585 sq. ft, FLOOR 2: 783 sq. ft  
EXCLUDED AREAS: , PATIO: 112 sq. ft  
GARAGE: 226 sq. ft  
TOTAL: 1368 sq. ft  
SIZES AND DIMENSIONS ARE APPROXIMATE, ACTUAL MAY VARY.

Disclaimer: Sizes and Dimensions are Approximate, Actual May Vary.



**Taylor Haas**  
303-665-7368  
taylorh@coloradorpm.com  
<https://www.coloradorpm.com/available-rental-properties-denver>

