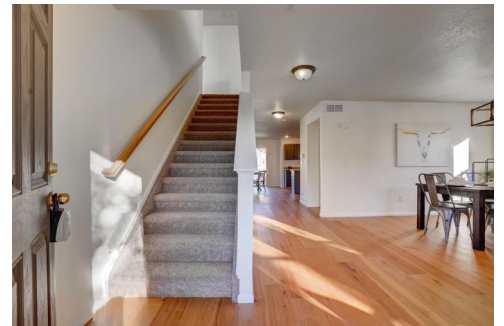




10152 Altura Street
 Commerce City, CO 80022
 COMMUNITY: High Pointe

MLS # 7833441
 PRICE \$500,000



Single Family



2942 SQFT



4 Beds



2/1 Baths



2 Car



0.16 Acre

PROPERTY DETAILS

Welcome home to the High Pointe community of Commerce City! This sprawling 2-Story abode is move in ready to the max featuring all brand new carpet on the upper level along with new tile flooring in the bathrooms and many updated modern lighting fixtures are found throughout. This home was thoughtfully designed with your every lifestyle convenience in mind offering plenty of storage from the kitchen pantry and numerous sizable closets to the unfinished basement awaiting your personal touch. The main level of the home is truly an entertainer's paradise featuring the formal living and dining rooms just off of the entryway and an open concept, great room style layout at the back of the home including a spacious kitchen, breakfast nook, and massive family room. Venture next upstairs and you are greeted by a pocket loft along with the glorious owner's suite featuring airy vaulted ceilings along with a private 5-piece bath and huge walk in closet. The upper level of the home is finished by three additional bedrooms and a secondary full bath. The backyard and outdoor living space is ready for you to make your own offering plenty of space for lounge and play. You will love living in High Pointe with Second Creek Elementary just one mile from the home along with a multitude of parks and open spaces with miles and miles of trails connecting them. Every amenity you need can be found just across the street in the Reunion Marketplace from grocery



Tatyana Sturm
 720-350-5909
 tatyana@exitrealtydtc.com
 https://thestorckteam.com



Scan code
 for more
 property
 details



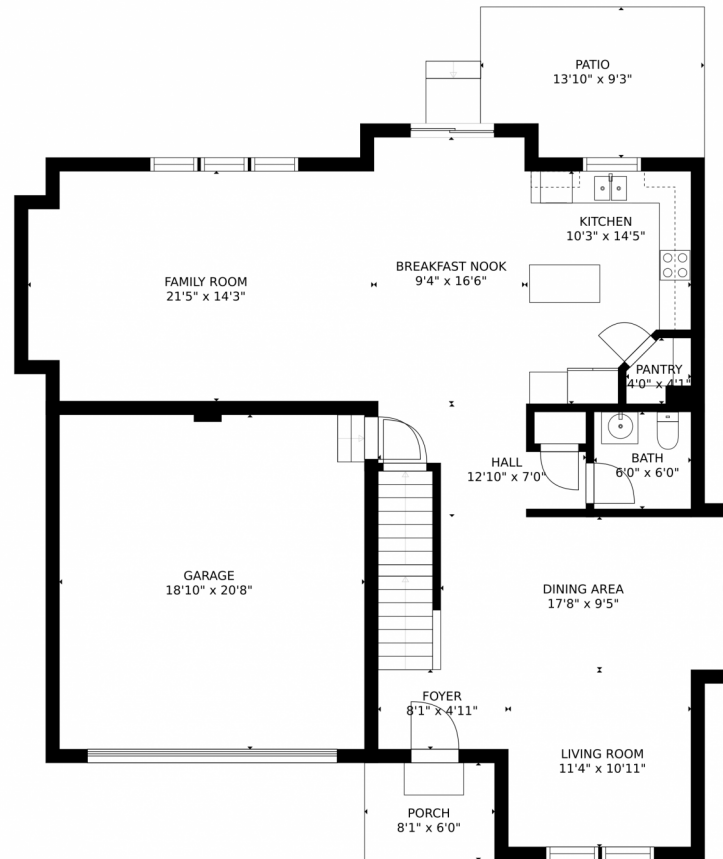
shopping at King Soopers to your morning cup o' joe from Dutch Brothers. The entrance to the Rocky Mountain Arsenal National Wildlife Refuge is also just minutes away where you can enjoy award-winning fishing, 10 miles of hiking and biking trails, and driving tracks where you can view many of America's most famous prairie wildlife including bison, deer, and many species of birds. Whether commuting to Downtown Denver or DIA and beyond, Hwy 76 is also just minutes away making any travel from your new home a breeze.



Tatyana Sturm
720-350-5909
tatyana@exitrealtydtc.com
<https://thestorckteam.com>



10152 Altura Street, Commerce City, CO 80022 – Main Level



GROSS INTERNAL AREA
FLOOR 1: 432 sq. ft, FLOOR 2: 1098 sq. ft
FLOOR 3: 1298 sq. ft, EXCLUDED AREAS:
PATIO: 122 sq. ft, PORCH: 49 sq. ft
GARAGE: 390 sq. ft
TOTAL: 2829 sq. ft
SIZES AND DIMENSIONS ARE APPROXIMATE, ACTUAL MAY VARY.

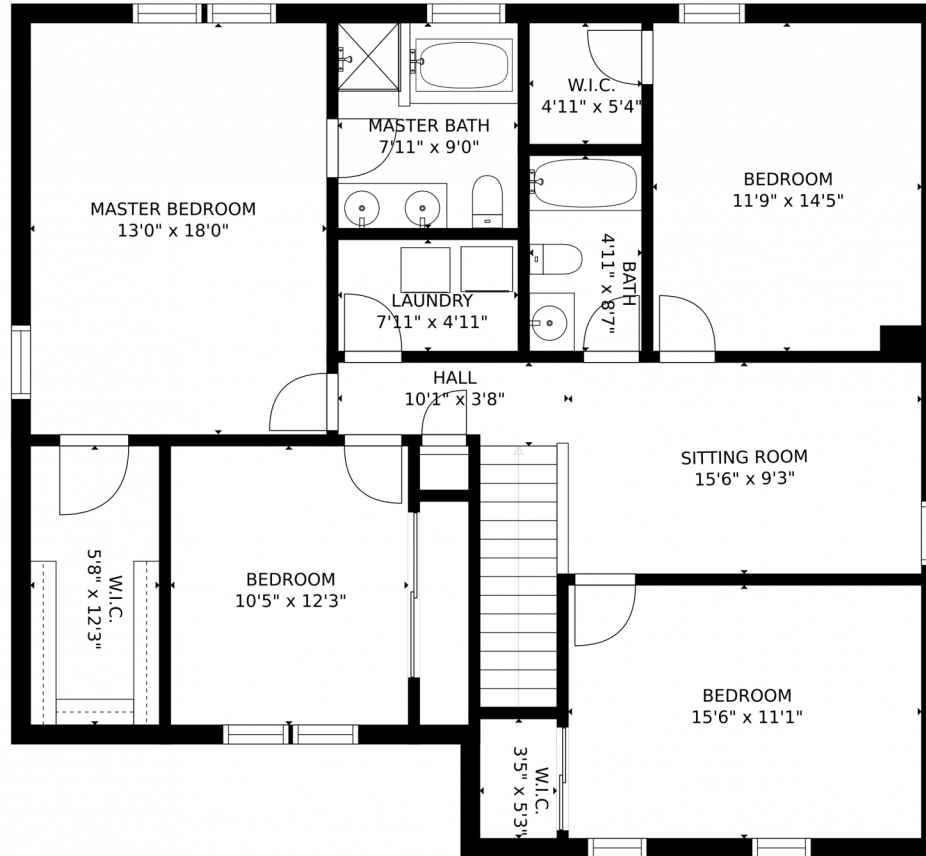
Disclaimer: Sizes and Dimensions are Approximate, Actual May Vary.



Tatyana Sturm
720-350-5909
tatyana@exitrealtydtc.com
<https://thestorckteam.com>



10152 Altura Street, Commerce City, CO 80022 – Upper Level



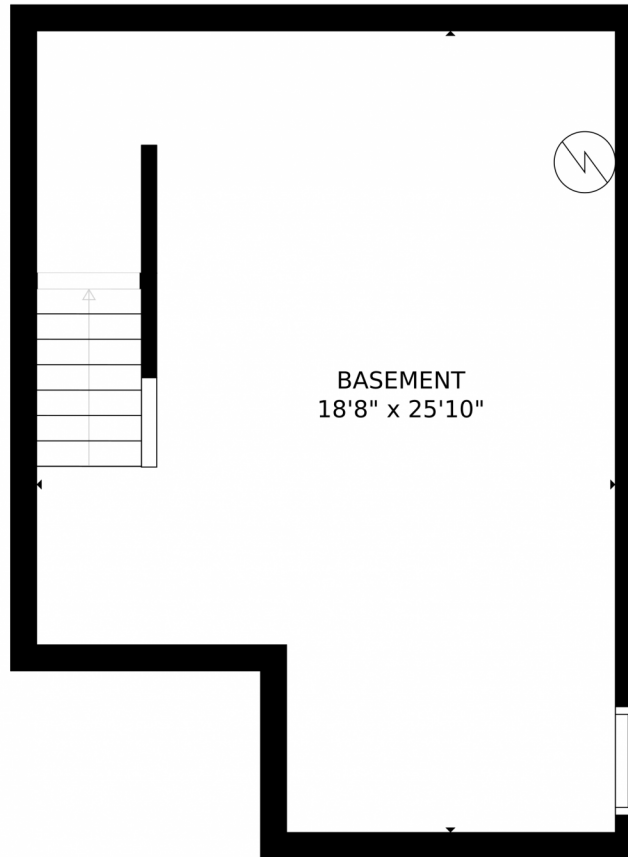
GROSS INTERNAL AREA
FLOOR 1: 432 sq. ft, FLOOR 2: 1098 sq. ft
FLOOR 3: 1298 sq. ft, EXCLUDED AREAS:
PATIO: 122 sq. ft, PORCH: 49 sq. ft
GARAGE: 390 sq. ft
TOTAL: 2829 sq. ft
SIZES AND DIMENSIONS ARE APPROXIMATE, ACTUAL MAY VARY.

Disclaimer: Sizes and Dimensions are Approximate, Actual May Vary.



Tatyana Sturm
720-350-5909
tatyana@exitrealtydtc.com
<https://thestorckteam.com>





GROSS INTERNAL AREA
FLOOR 1: 432 sq. ft. FLOOR 2: 1098 sq. ft.
FLOOR 3: 1298 sq. ft. EXCLUDED AREAS:
PATIO: 122 sq. ft. PORCH: 49 sq. ft.
GARAGE: 390 sq. ft.
TOTAL: 2829 sq. ft.
SIZES AND DIMENSIONS ARE APPROXIMATE, ACTUAL MAY VARY.

Disclaimer: Sizes and Dimensions are Approximate, Actual May Vary.

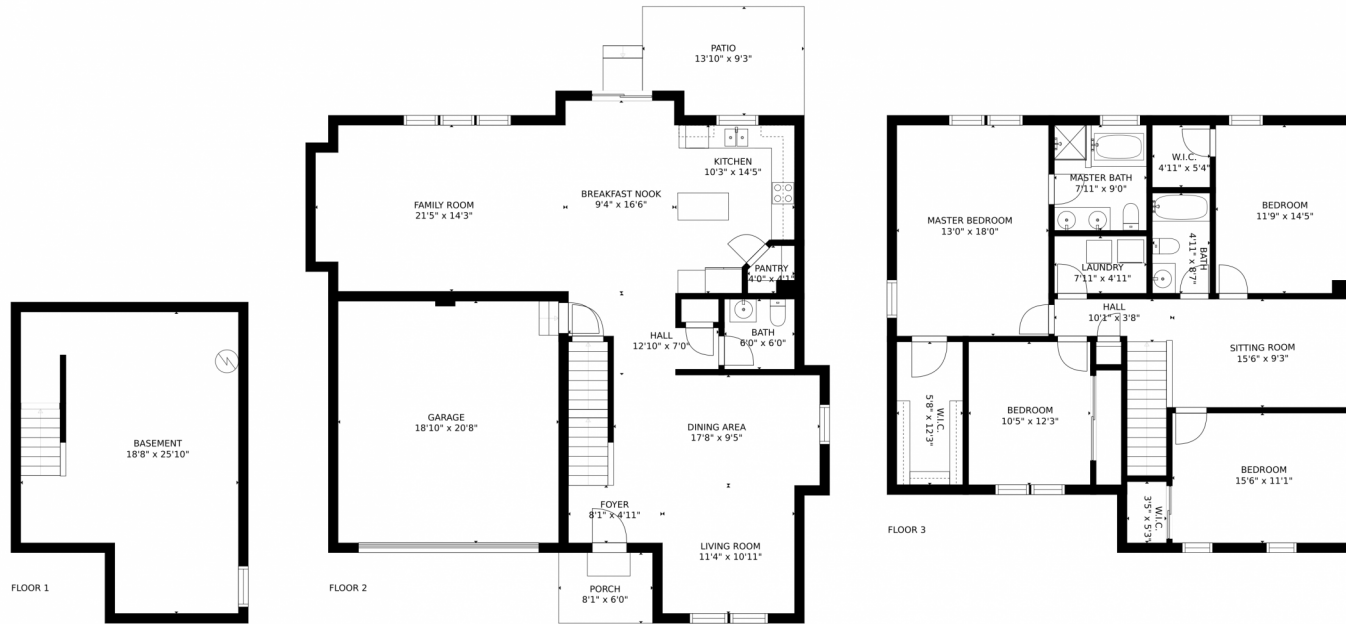


Tatyana Sturm
720-350-5909
tatyana@exitrealtydtc.com
<https://thestorckteam.com>



Scan code
for more
property
details

10152 Altura Street, Commerce City, CO 80022 – All Levels



GROSS INTERNAL AREA
FLOOR 1: 432 sq. ft, FLOOR 2: 1098 sq. ft
FLOOR 3: 1298 sq. ft, EXCLUDED AREAS:
PATIO: 122 sq. ft, PORCH: 49 sq. ft
GARAGE: 390 sq. ft
TOTAL: 2829 sq. ft
SIZES AND DIMENSIONS ARE APPROXIMATE, ACTUAL MAY VARY.

Disclaimer: Sizes and Dimensions are Approximate, Actual May Vary.



Tatyana Sturm
720-350-5909
tatyana@exitrealtydtc.com
<https://thestorckteam.com>

