



36545 Winchester Road
 Elizabeth, CO 80107
 COMMUNITY: Western Country Ranches

MLS # 5175344
 PRICE \$685,000



Single Family



2272 SQFT



4 Beds



4/1 Baths



2 Car



2.44 Acre

PROPERTY DETAILS

Showings begin 4:00pm Friday, October 22. Modern living in a tranquil rural setting. 2.44 acres of quiet serenity. This house has been beautifully remodeled and includes a smart nest smart system, a tankless water heater, flo water system with remote shutoff, a newer roof (hail resistant about 2 years old - check with your insurance for discount), exterior paint about 1.5 years ago. A tankless water heater was also installed in the update. In this secluded neighborhood you can enjoy the tranquility while viewing deer, which are frequent visitors, from one of the multi-level decks. Or gather around the fire pit on a crisp Colorado night. The view from the kitchen/dining room deck is of a stand of open space, evergreen trees, and big sky. The master suite includes a very large walk-in closet 13x9 approx and a 5 piece master bath. There is a bathroom located on every level of the house. The walk-out basement is a Mother-in-law apartment with a bedroom, living room, kitchenette, and a full bathroom and has outdoor access. The small refrigerator and microwave in basement mother-in-law apartment are included. Paved driveway and RV parking pad.



Denise Cruz
 303-525-4120
 denisecruz.realtor@gmail.com



Scan code
 for more
 property
 details



36545 Winchester Road, Elizabeth, CO 80107 – All Levels



GROSS INTERNAL AREA
FLOOR 1: 828 sq. ft, FLOOR 2: 845 sq. ft
FLOOR 3: 959 sq. ft, EXCLUDED AREAS:
PATIO: 277 sq. ft, DECK: 235 sq. ft
PORCH: 130 sq. ft, GARAGE: 291 sq. ft
TOTAL: 2631 sq. ft
SIZES AND DIMENSIONS ARE APPROXIMATE, ACTUAL MAY VARY.

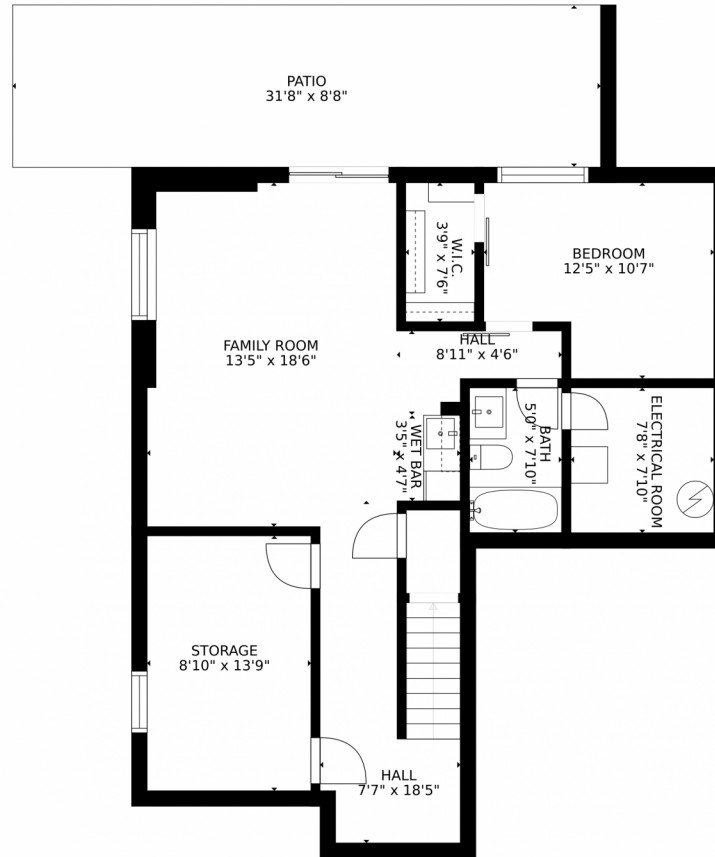
Disclaimer: Sizes and Dimensions are Approximate, Actual May Vary.



Denise Cruz
303-525-4120
denisecruz.realtor@gmail.com



36545 Winchester Road, Elizabeth, CO 80107 – Lower Level



GROSS INTERNAL AREA
FLOOR 1: 828 sq. ft. FLOOR 2: 845 sq. ft.
FLOOR 3: 959 sq. ft. EXCLUDED AREAS:
PATIO: 277 sq. ft. DECK: 235 sq. ft.
PORCH: 130 sq. ft. GARAGE: 291 sq. ft.
TOTAL: 2631 sq. ft.
SIZES AND DIMENSIONS ARE APPROXIMATE, ACTUAL MAY VARY.

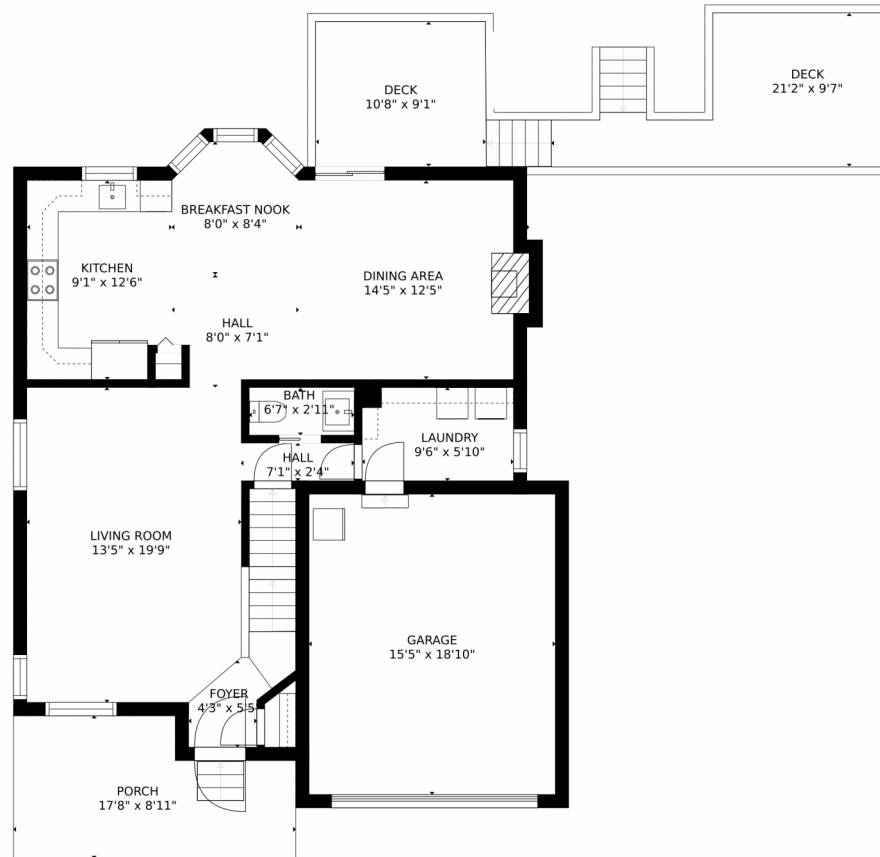
Disclaimer: Sizes and Dimensions are Approximate, Actual May Vary.



Denise Cruz
303-525-4120
denisecruz.realtor@gmail.com



36545 Winchester Road, Elizabeth, CO 80107 – Main Level



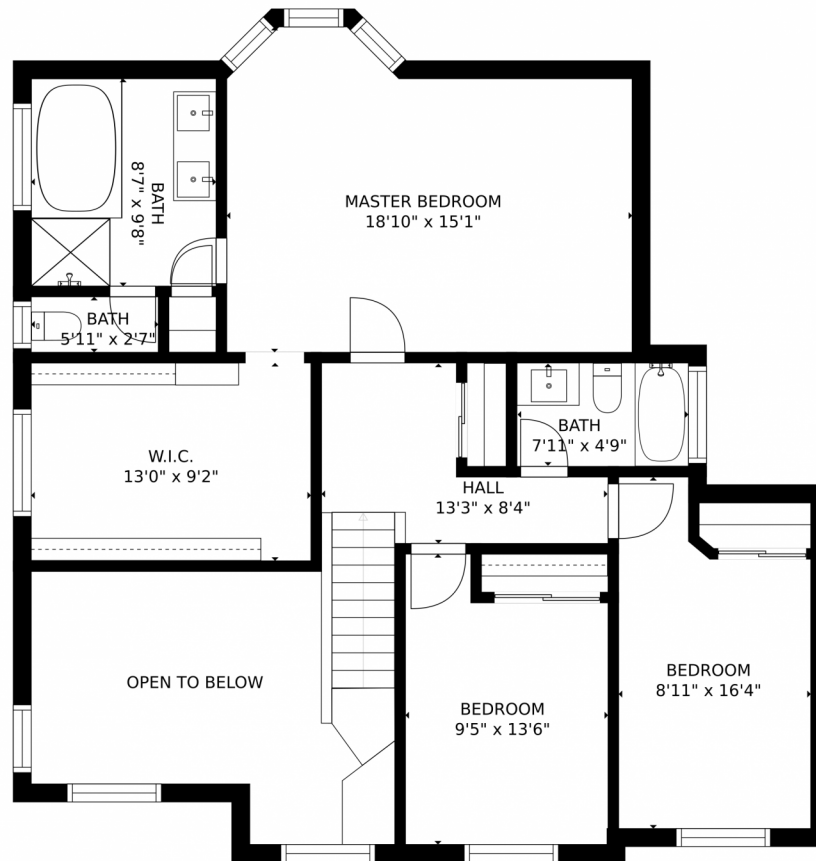
GROSS INTERNAL AREA
FLOOR 1: 828 sq. ft. FLOOR 2: 845 sq. ft.
FLOOR 3: 959 sq. ft. EXCLUDED AREAS:
PATIO: 277 sq. ft. DECK: 235 sq. ft.
PORCH: 130 sq. ft. GARAGE: 291 sq. ft.
TOTAL: 2631 sq. ft.
SIZES AND DIMENSIONS ARE APPROXIMATE, ACTUAL MAY VARY.

Disclaimer: Sizes and Dimensions are Approximate, Actual May Vary.



Denise Cruz
303-525-4120
denisecruz.realtor@gmail.com





GROSS INTERNAL AREA
FLOOR 1: 828 sq. ft. FLOOR 2: 845 sq. ft.
FLOOR 3: 959 sq. ft. EXCLUDED AREAS:
PATIO: 277 sq. ft. DECK: 235 sq. ft.
PORCH: 130 sq. ft. GARAGE: 291 sq. ft.
TOTAL: 2631 sq. ft.
SIZES AND DIMENSIONS ARE APPROXIMATE, ACTUAL MAY VARY.

Disclaimer: Sizes and Dimensions are Approximate, Actual May Vary.



Denise Cruz
303-525-4120
denisecruz.realtor@gmail.com



Scan code
for more
property
details