



Single Family



4410 SQFT



5 Beds



3 Baths



3 Car



0.7 Acre

PROPERTY DETAILS

This stunning, nearly-new home has everything you've been looking for! The large lot is beautifully landscaped and includes a fenced backyard with a hot tub that is well over half an acre. You will love the open floorplan on the main level including all the sunlight streaming in through the windows, the gorgeous kitchen that boasts a gas range, large kitchen island, granite countertops and butler's pantry. The main floor includes a full bedroom and bathroom that can be used as an office or the perfect accommodation for anyone seeking main floor living. The primary bedroom and en-suite bathroom are luxurious in feel and finishes. Three more bedrooms and full bathrooms and easily accessible laundry room round out the top floor. The full sized unfinished basement is a blank slate and perfect opportunity to add an enormous second living area, movie area, play room, or whatever you need it to be! This meticulously maintained home has everything you want and is in turn-key condition! Welcome home!



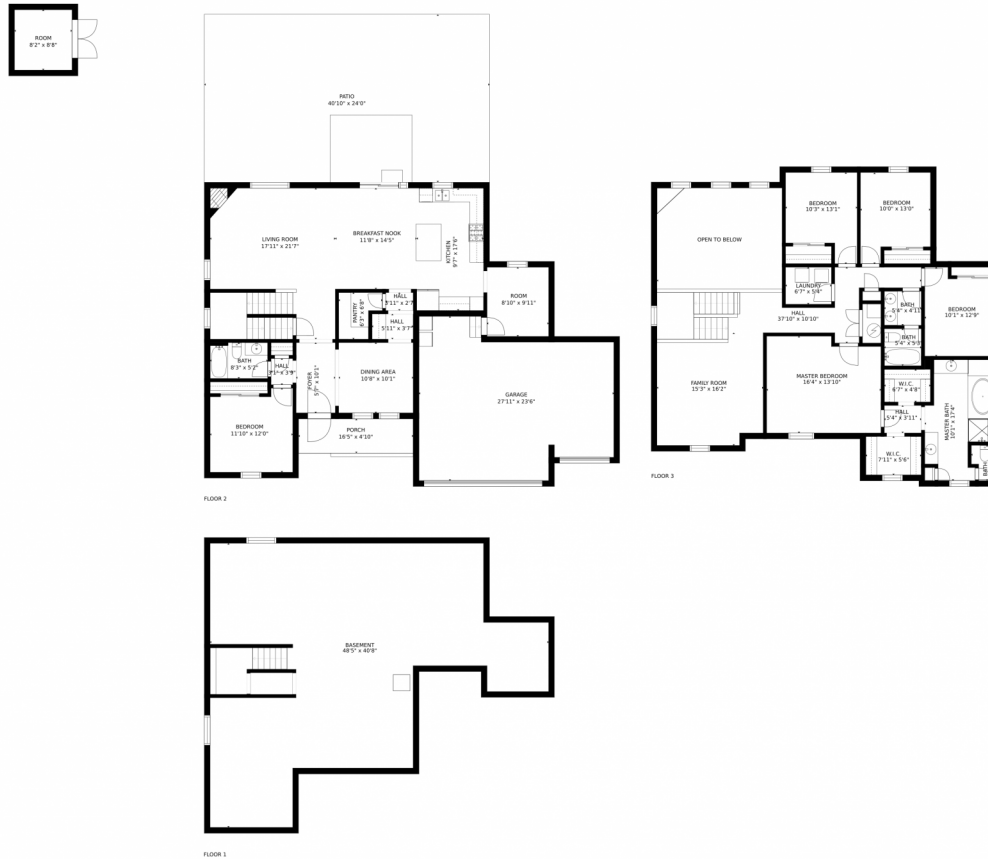
Megan Gage
303-902-6613
steven.megangage@gmail.com



Scan code
for more
property
details



5768 Desert Inn loop, Elizabeth, CO 80107 – All Levels



GROSS INTERNAL AREA
 FLOOR 1: 1302 sq. ft, FLOOR 2: 1374 sq. ft
 FLOOR 3: 1521 sq. ft, EXCLUDED AREAS:
 PATIO: 982 sq. ft, PORCH: 81 sq. ft
 GARAGE: 553 sq. ft
 TOTAL: 4197 sq. ft
SIZES AND DIMENSIONS ARE APPROXIMATE, ACTUAL MAY VARY.

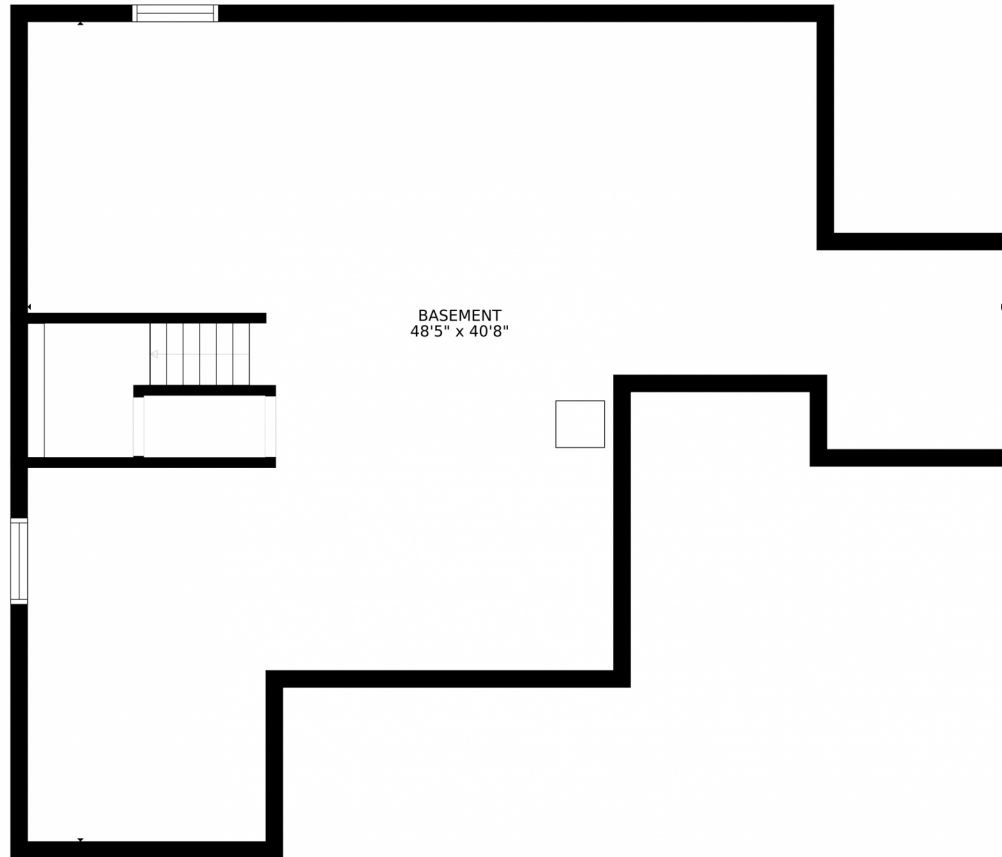
Disclaimer: Sizes and Dimensions are Approximate, Actual May Vary.



Megan Gage
 303-902-6613
 steven.megangage@gmail.com



5768 Desert Inn loop, Elizabeth, CO 80107 – Lower Level



BASEMENT
48'5" x 40'8"

GROSS INTERNAL AREA
FLOOR 1: 1302 sq. ft. FLOOR 2: 1374 sq. ft.
FLOOR 3: 1521 sq. ft. EXCLUDED AREAS:
PATIO: 982 sq. ft. PORCH: 81 sq. ft.
GARAGE: 553 sq. ft.
TOTAL: 4197 sq. ft.
SIZES AND DIMENSIONS ARE APPROXIMATE, ACTUAL MAY VARY.

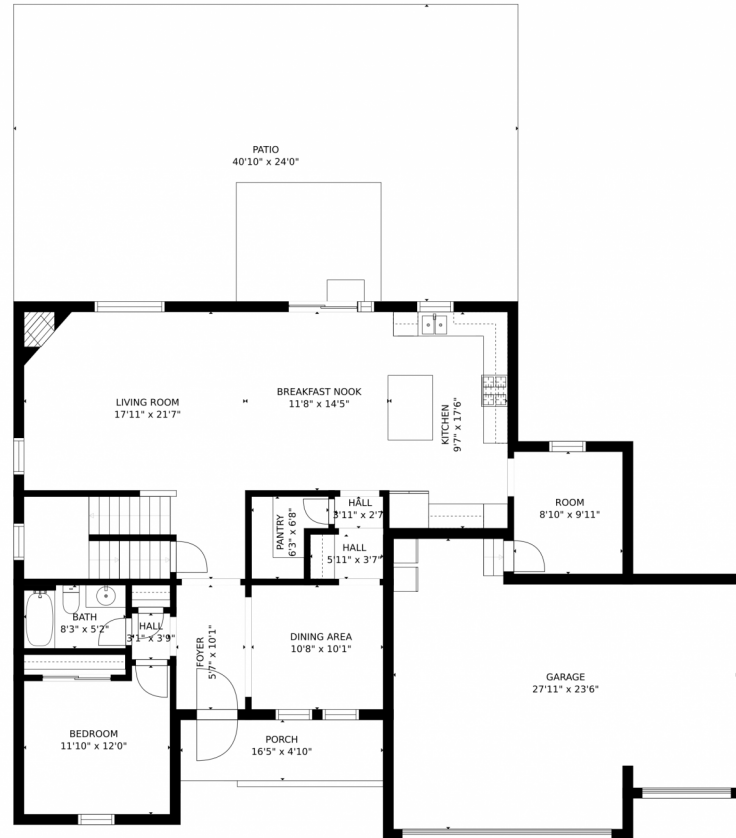
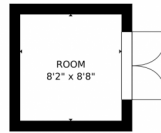
Disclaimer: Sizes and Dimensions are Approximate, Actual May Vary.



Megan Gage
303-902-6613
steven.megangage@gmail.com



5768 Desert Inn loop, Elizabeth, CO 80107 – Main Level



GROSS INTERNAL AREA
FLOOR 1: 1302 sq. ft, FLOOR 2: 1374 sq. ft
FLOOR 3: 1521 sq. ft, EXCLUDED AREAS:
PATIO: 982 sq. ft, PORCH: 81 sq. ft
GARAGE: 553 sq. ft
TOTAL: 4197 sq. ft
SIZES AND DIMENSIONS ARE APPROXIMATE, ACTUAL MAY VARY.

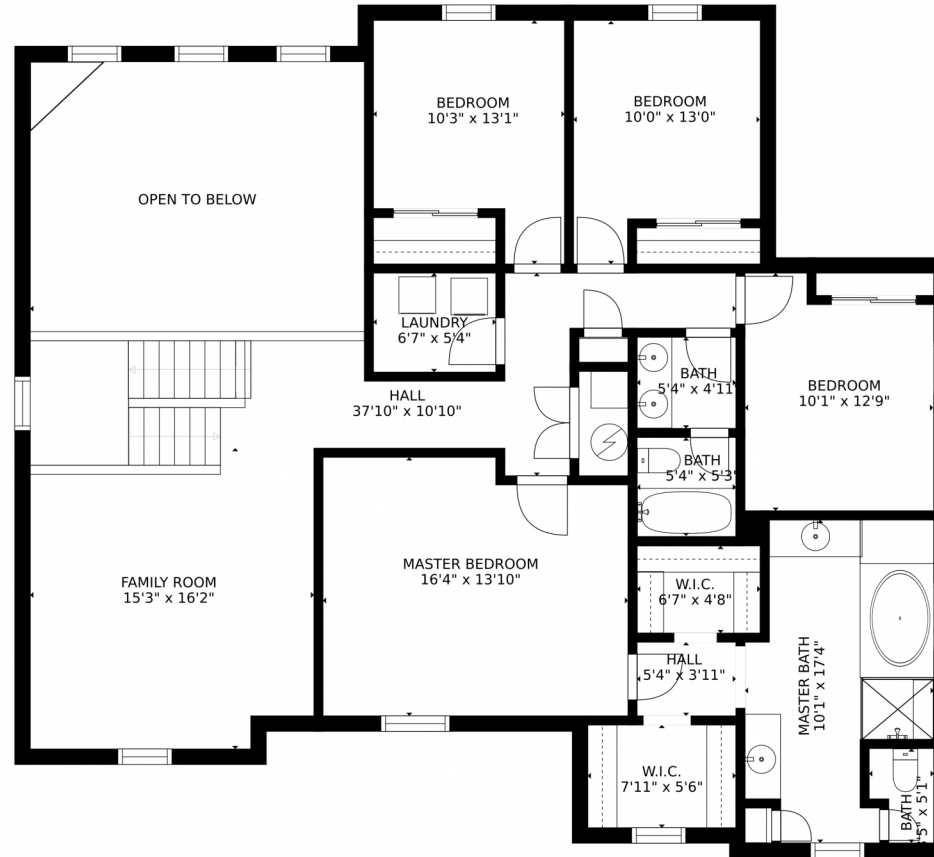
Disclaimer: Sizes and Dimensions are Approximate, Actual May Vary.



Megan Gage
303-902-6613
steven.megangage@gmail.com



5768 Desert Inn loop, Elizabeth, CO 80107 – Upper Level



GROSS INTERNAL AREA
FLOOR 1: 1302 sq. ft. FLOOR 2: 1374 sq. ft.
FLOOR 3: 1521 sq. ft. EXCLUDED AREAS:
PATIO: 982 sq. ft. PORCH: 81 sq. ft.
GARAGE: 553 sq. ft.
TOTAL: 4197 sq. ft.
SIZES AND DIMENSIONS ARE APPROXIMATE, ACTUAL MAY VARY.

Disclaimer: Sizes and Dimensions are Approximate, Actual May Vary.



Megan Gage
303-902-6613
steven.megangage@gmail.com



Scan code
for more
property
details