



7126 Gladiola Street
Arvada, CO 80004
COMMUNITY: Shadow Mountain

MLS # 3179925
PRICE \$650,000



Single Family

3029 SQFT

4 Beds

4/2 Baths

2 Car

18 Acre



Matthew Lutz
720-448-3822
matthew.f.lutz@gmail.com



7126 Gladiola Street, Arvada, CO 80004 – All Levels



GROSS INTERNAL AREA
FLOOR 1: 703 sq. ft, FLOOR 2: 1031 sq. ft
FLOOR 3: 1089 sq. ft, EXCLUDED AREAS:
REDUCED HEADROOM BELOW 1.5M: 277 sq. ft, PATIO: 845 sq. ft
PORCH: 182 sq. ft, GARAGE: 431 sq. ft
TOTAL: 2823 sq. ft
SIZES AND DIMENSIONS ARE APPROXIMATE, ACTUAL MAY VARY.

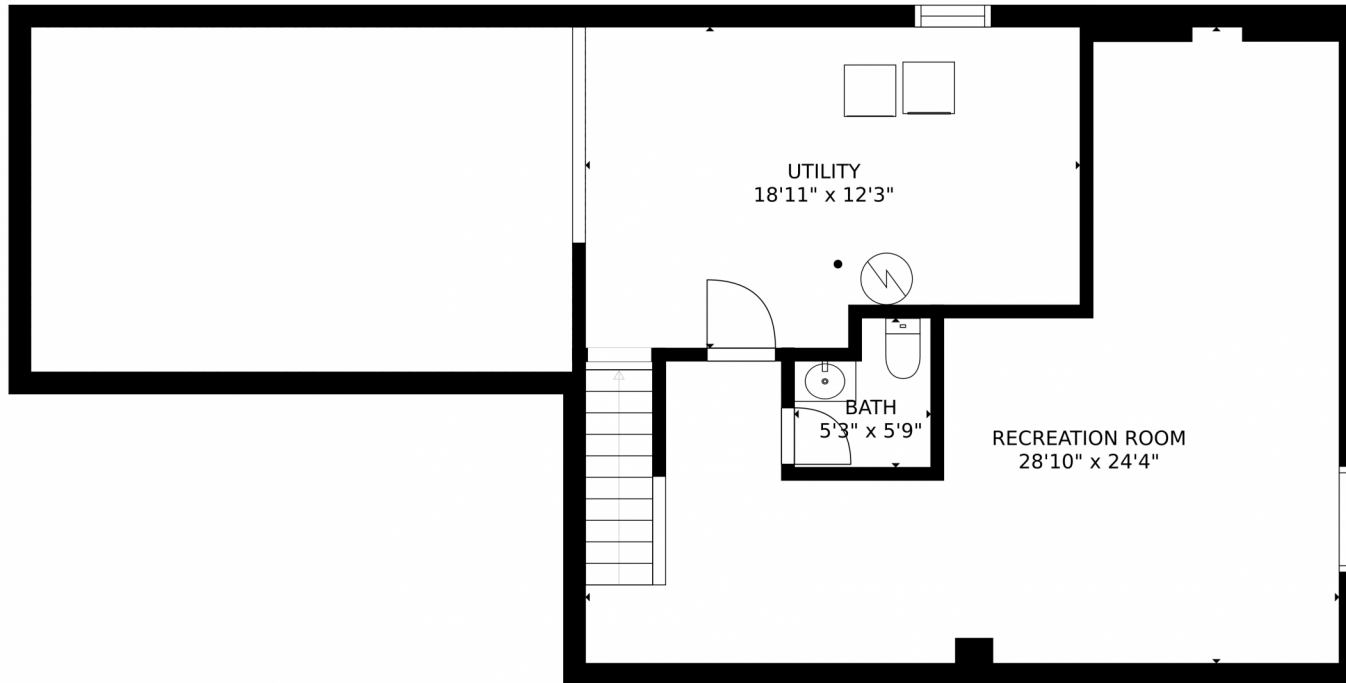
Disclaimer: Sizes and Dimensions are Approximate, Actual May Vary.



Matthew Lutz
720-448-3822
matthew.f.lutz@gmail.com



Scan code
for more
property
details



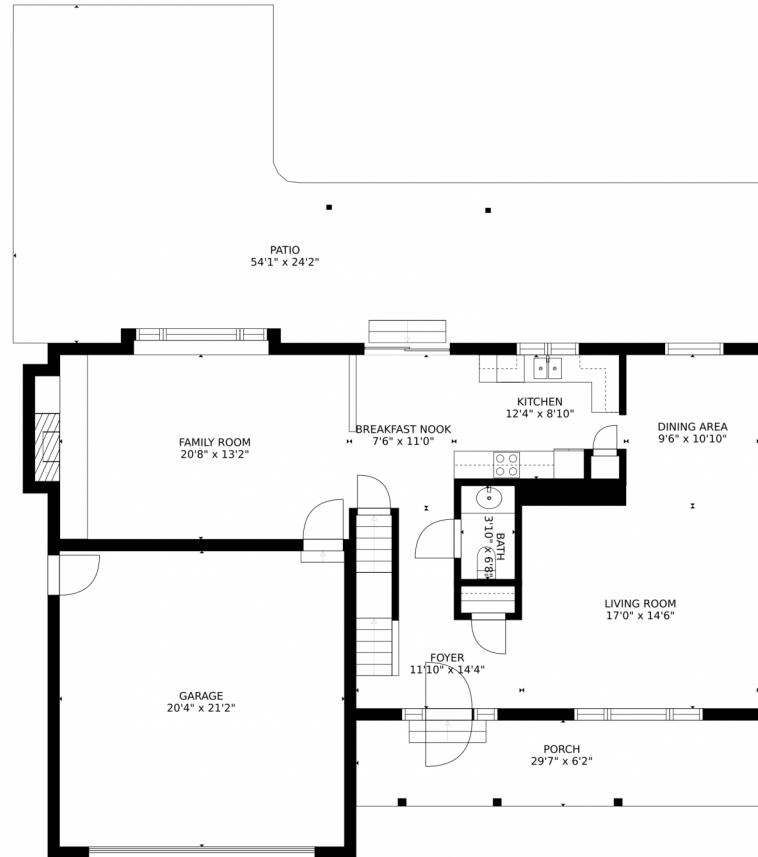
GROSS INTERNAL AREA
FLOOR 1: 703 sq. ft. FLOOR 2: 1031 sq. ft.
FLOOR 3: 1089 sq. ft. EXCLUDED AREAS:
REDUCED HEADROOM BELOW 1.5M: 277 sq. ft. PATIO: 845 sq. ft.
PORCH: 182 sq. ft. GARAGE: 431 sq. ft.
TOTAL: 2823 sq. ft.
SIZES AND DIMENSIONS ARE APPROXIMATE, ACTUAL MAY VARY.

Disclaimer: Sizes and Dimensions are Approximate, Actual May Vary.



Matthew Lutz
720-448-3822
matthew.f.lutz@gmail.com





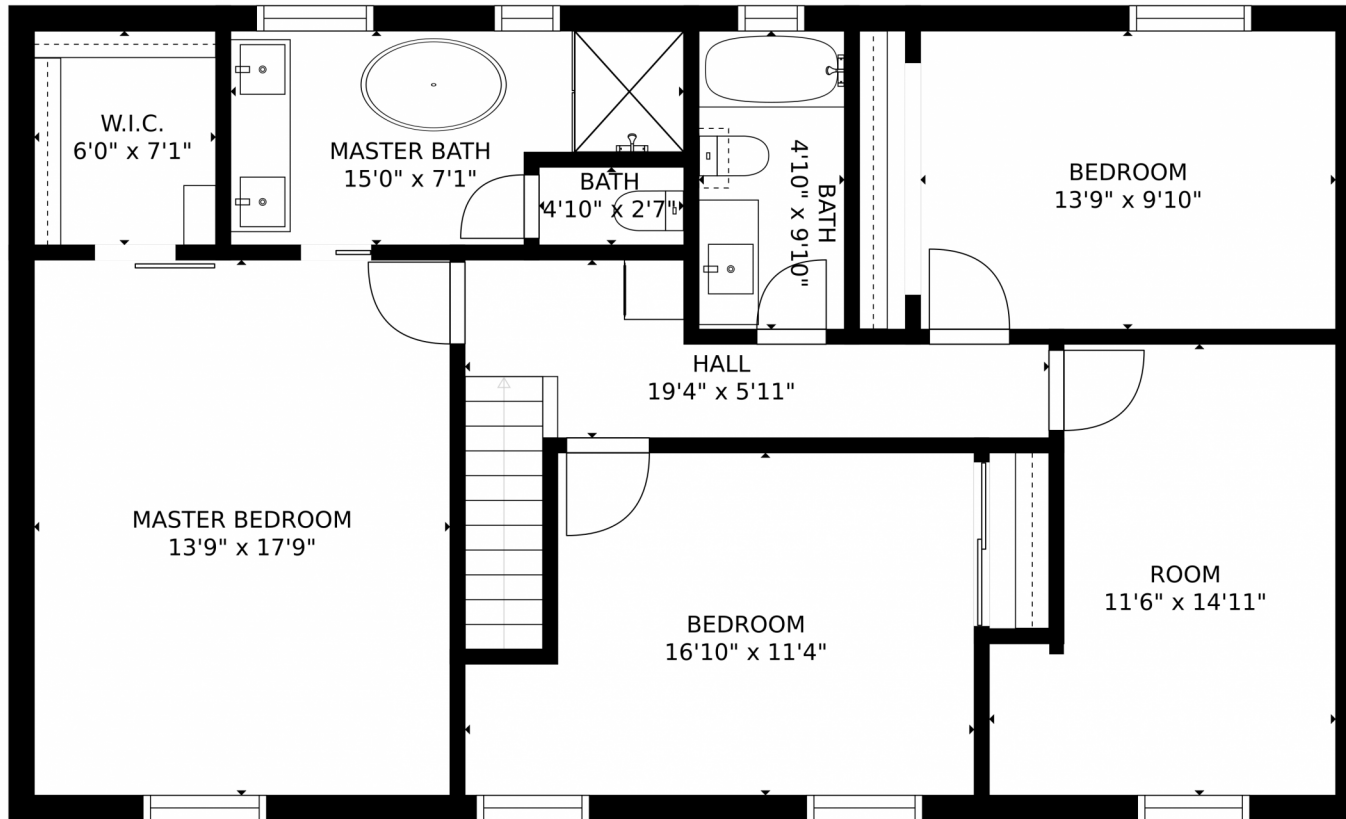
GROSS INTERNAL AREA
FLOOR 1: 703 sq. ft, FLOOR 2: 1031 sq. ft
FLOOR 3: 1089 sq. ft, EXCLUDED AREAS:
REDUCED HEADROOM BELOW 1.5M: 277 sq. ft, PATIO: 845 sq. ft
PORCH: 182 sq. ft, GARAGE: 431 sq. ft
TOTAL: 2823 sq. ft
SIZES AND DIMENSIONS ARE APPROXIMATE, ACTUAL MAY VARY.

Disclaimer: Sizes and Dimensions are Approximate, Actual May Vary.



Matthew Lutz
720-448-3822
matthew.f.lutz@gmail.com





GROSS INTERNAL AREA
FLOOR 1: 703 sq. ft. FLOOR 2: 1031 sq. ft
FLOOR 3: 1089 sq. ft. EXCLUDED AREAS:
REDUCED HEADROOM BELOW 1.5M: 277 sq. ft. PATIO: 845 sq. ft
PORCH: 182 sq. ft. GARAGE: 431 sq. ft
TOTAL: 2823 sq. ft
SIZES AND DIMENSIONS ARE APPROXIMATE, ACTUAL MAY VARY.

Disclaimer: Sizes and Dimensions are Approximate, Actual May Vary.



Matthew Lutz
720-448-3822
matthew.f.lutz@gmail.com



Scan code
for more
property
details