



4615 Sunridge Terrace Drive
Castle Rock, CO 80109



Single Family



2800 SQFT



3 Beds



2/2 Baths



2 Car

Joan Jackson
303-548-9700
joanjack1@aol.com



Scan code
for more
property
details



4615 Sunridge Terrace Drive, Castle Rock, CO 80109 – All Levels



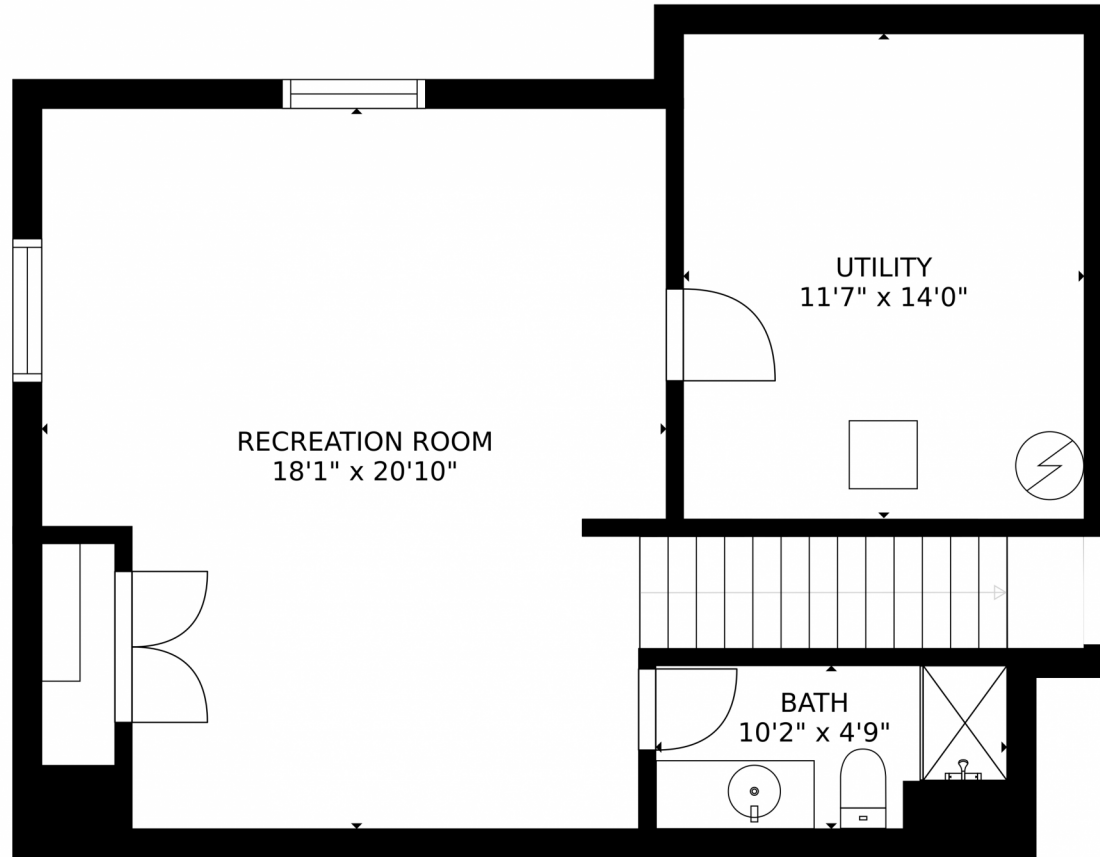
GROSS INTERNAL AREA
FLOOR 1: 643 sq. ft. FLOOR 2: 932 sq. ft
FLOOR 3: 900 sq. ft. EXCLUDED AREAS:
PATIO: 187 sq. ft. PORCH: 101 sq. ft
GARAGE: 580 sq. ft
TOTAL: 2475 sq. ft
SIZES AND DIMENSIONS ARE APPROXIMATE, ACTUAL MAY VARY.

Disclaimer: Sizes and Dimensions are Approximate, Actual May Vary.

Joan Jackson
303-548-9700
joanjack1@aol.com



4615 Sunridge Terrace Drive, Castle Rock, CO 80109 – Lower Level



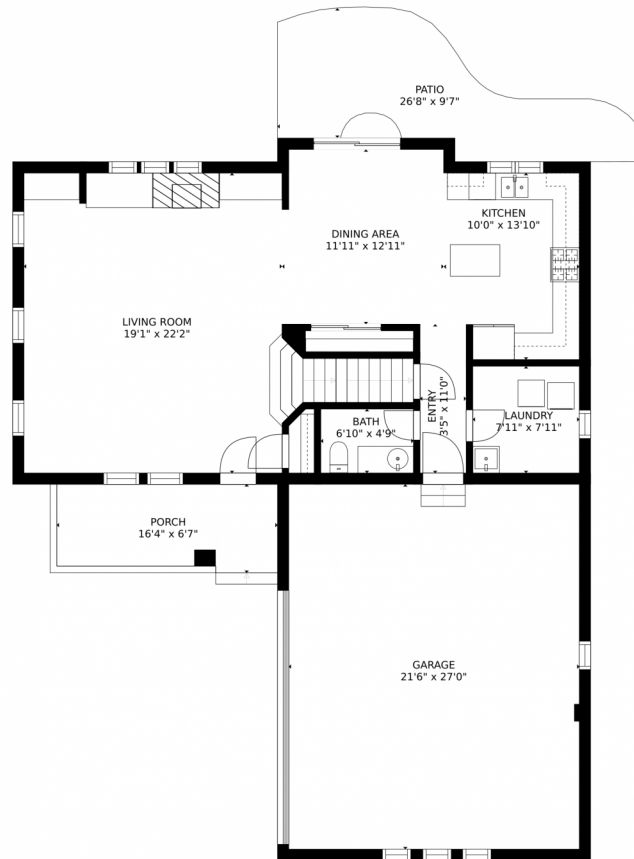
GROSS INTERNAL AREA
FLOOR 1: 643 sq. ft. FLOOR 2: 932 sq. ft.
FLOOR 3: 900 sq. ft. EXCLUDED AREAS:
PATIO: 187 sq. ft. PORCH: 101 sq. ft.
GARAGE: 580 sq. ft.
TOTAL: 2475 sq. ft.
SIZES AND DIMENSIONS ARE APPROXIMATE, ACTUAL MAY VARY.

Disclaimer: Sizes and Dimensions are Approximate, Actual May Vary.

Joan Jackson
303-548-9700
joanjack1@aol.com



4615 Sunridge Terrace Drive, Castle Rock, CO 80109 – Main Level



GROSS INTERNAL AREA
FLOOR 1: 643 sq. ft. FLOOR 2: 932 sq. ft.
FLOOR 3: 900 sq. ft. EXCLUDED AREAS:
PATIO: 187 sq. ft. PORCH: 101 sq. ft.
GARAGE: 580 sq. ft.
TOTAL: 2475 sq. ft.
SIZES AND DIMENSIONS ARE APPROXIMATE, ACTUAL MAY VARY.

Disclaimer: Sizes and Dimensions are Approximate, Actual May Vary.

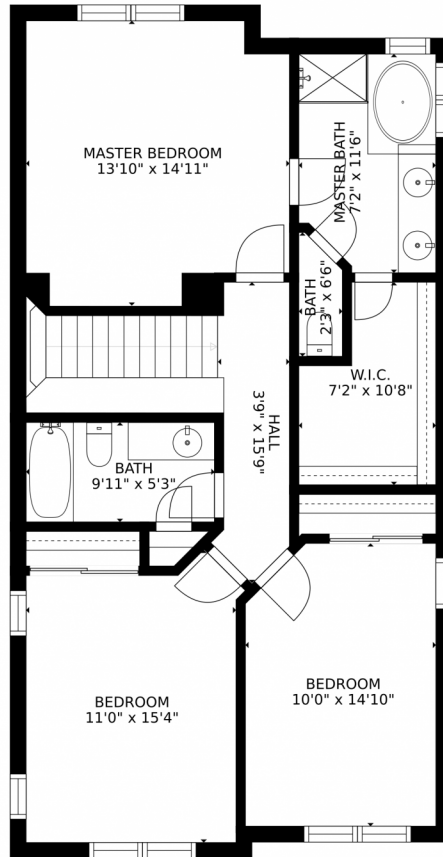
Joan Jackson
303-548-9700
joanjack1@aol.com



Scan code for more property details



4615 Sunridge Terrace Drive, Castle Rock, CO 80109 – Upper Level



GROSS INTERNAL AREA
FLOOR 1: 643 sq. ft, FLOOR 2: 932 sq. ft
FLOOR 3: 900 sq. ft, EXCLUDED AREAS:
PATIO: 187 sq. ft, PORCH: 101 sq. ft
GARAGE: 580 sq. ft
TOTAL: 2475 sq. ft
SIZES AND DIMENSIONS ARE APPROXIMATE, ACTUAL MAY VARY.

Disclaimer: Sizes and Dimensions are Approximate, Actual May Vary.

Joan Jackson
303-548-9700
joanjack1@aol.com

