



16002 E Alabama Drive  
Aurora, CO 80017  
COMMUNITY: Brookvale

MLS # 8057419  
PRICE \$500,000



Single Family



2536 SQFT



5 Beds



3/1 Baths



2 Car



0.23 Acre

## PROPERTY DETAILS

Welcome home to the Brookvale community of Aurora! This sparkling 2-story abode is quietly nestled atop nearly a quarter acre corner lot. Immediately upon entering you are taken away by the many recent updates to this home making it move-in ready to the max including a beautifully remastered chef's kitchen and private owner's bathroom along with many new lighting and water fixtures, all nicely finished with fresh new interior paint. This thoughtfully planned layout offers formal living space on the main level as soon as you enter the home, then the kitchen and family room at the back of the main level. Upstairs you will find the beautiful owner's suite complete with a private bathroom and dual closets along with two generously sized additional bedrooms and a secondary full bathroom. But wait, there's more as the basement is finished as well complete with a fourth and fifth bedroom along with a third spacious living space and another bathroom. The sprawling backyard and outdoor living space are a wonderful addition featuring an expansive covered patio area and plenty of yard space ready for you to make your own. You will love living in Brookvale as every lifestyle convenience is just minutes away including The Aurora Mall for endless shopping at all of your favorite stores along with additional shopping and dining at the Aurora City Place offering many eateries and additional choice retail options. Rocky Ridge Park is also within walking distance to your new home



**Tatyana Sturm**

720-350-5909

tatyana@exitrealtydtc.com

<https://thestorckteam.com>

Scan code  
for more  
property  
details



offering a playground and tons of open space. The Aurora City Center Park is also a short drive where you can enjoy a multitude of community events from their 4th of July Fireworks display to live music during the Summertime along with Art in the Park. Arrive anywhere your heart desires in the Denver Metro area within minutes as Highway 225 is just a couple blocks away making your commute a breeze whether you are headed Downtown or into the Denver Tech Center.



**Tatyana Sturm**  
720-350-5909  
tatyana@exitrealtydtc.com  
<https://thestorckteam.com>



Scan code  
for more  
property  
details



# 16002 E Alabama Drive, Aurora, CO 80017 – All Levels



SIZES AND DIMENSIONS ARE APPROXIMATE, ACTUAL MAY VARY.

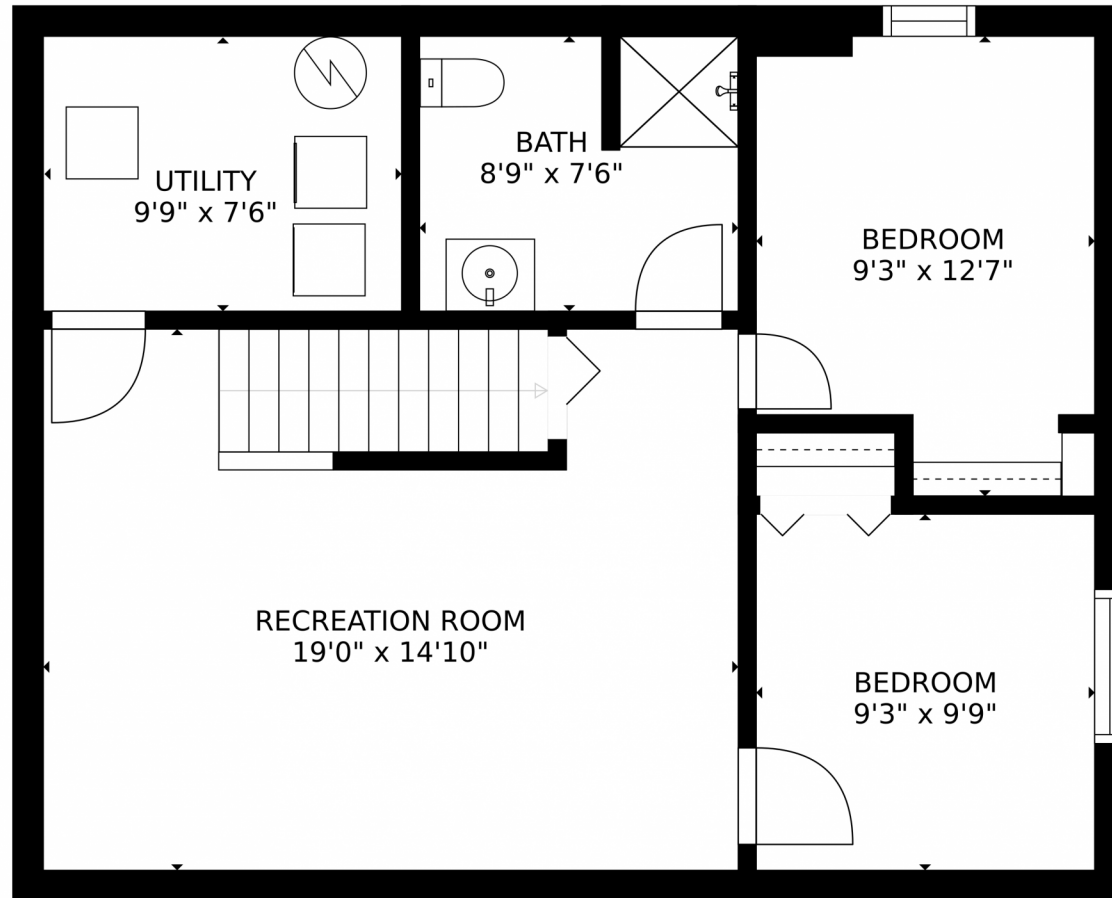
Disclaimer: Sizes and Dimensions are Approximate, Actual May Vary.



**Tatyana Sturm**  
720-350-5909  
tatyana@exitrealttydc.com  
<https://thestorckteam.com>



16002 E Alabama Drive, Aurora, CO 80017 – Lower Level



SIZES AND DIMENSIONS ARE APPROXIMATE, ACTUAL MAY VARY.

Disclaimer: Sizes and Dimensions are Approximate, Actual May Vary.

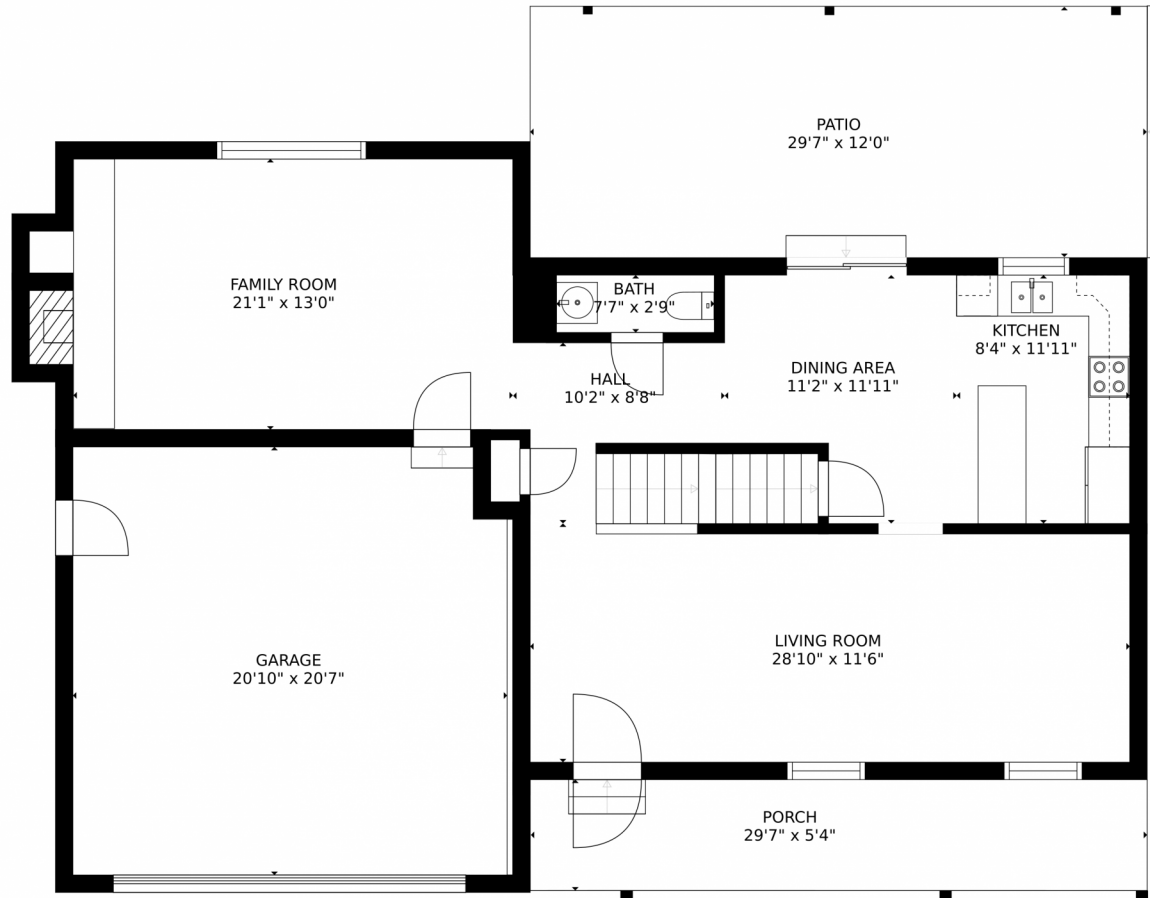


**Tatyana Sturm**  
720-350-5909  
tatyana@exitrealtydtc.com  
<https://thestorckteam.com>



Scan code  
for more  
property  
details

16002 E Alabama Drive, Aurora, CO 80017 – Main Level



SIZES AND DIMENSIONS ARE APPROXIMATE, ACTUAL MAY VARY.

Disclaimer: Sizes and Dimensions are Approximate, Actual May Vary.

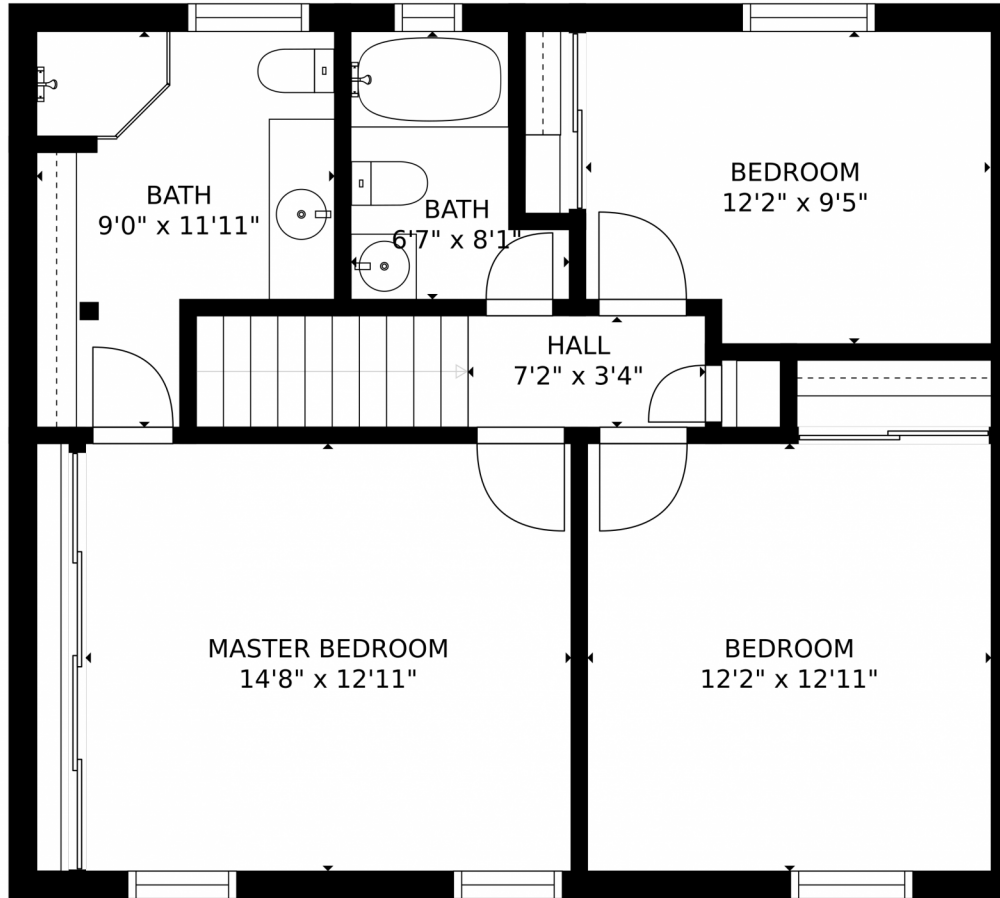


**Tatyana Sturm**  
720-350-5909  
tatyana@exitrealtydtc.com  
<https://thestorckteam.com>



Scan code  
for more  
property  
details

16002 E Alabama Drive, Aurora, CO 80017 – Upper Level



SIZES AND DIMENSIONS ARE APPROXIMATE, ACTUAL MAY VARY.

Disclaimer: Sizes and Dimensions are Approximate, Actual May Vary.



**Tatyana Sturm**  
720-350-5909  
tatyana@exitrealtydtc.com  
<https://thestorckteam.com>



Scan code  
for more  
property  
details