



Single Family



2144 SQFT



3 Beds



2/1 Baths



2 Car



0.14 Acre

## PROPERTY DETAILS

Come see this "Corner Oasis" in beautiful Founders Village. Mature trees provide sanctuary privacy with shade for the rear deck & professionally laid brick-paver patio/courtyard/grill area. Seller boasts "the sunrises from the deck are incredible". West facing home means less snow to shovel in winter & sunset skies from the porch swing. Enjoy beautiful lilac bushes giving front porch privacy in the summer months. Enter this 3bedroom, 2.5 bath & enjoy natural light cascading up into the vaulted ceilings in the living room & hardwoods through the main level. Pride of ownership shows throughout this open floor plan home. The kitchen adjoins the family room separated by a pony wall, giving a divide for an eat in kitchen space. The large slider to the deck has built in blinds so no dusting needed! All bedrooms are on the upper level with a shared full bathroom for the secondary bedrooms. The owner's bedroom boasts vaulted ceilings & because of the corner lot, has lots of light cascading through each morning. The bath is 5pc (stand up shower, soaking tub, double sinks). An attached suite is currently used as a home office. Cord free custom Honeycomb blinds throughout will remain & many feature "top down bottom up" for privacy. Need an extra bedroom? The basement has space. The basement has a wonderful workbench and cabinetry and large, insulated crawl space for extra storage. Ample storage exists in the garage with hung cabinetry & pegs to hang your tools and skis. The backyard has a large raised garden bed, a composting box & fenced to keep this area separate.



**Gwen Hamm**

720-530-5489

[gwenhamm@kw.com](mailto:gwenhamm@kw.com)

<https://gwenhamm.kw.com/>

Scan code  
for more  
property  
details



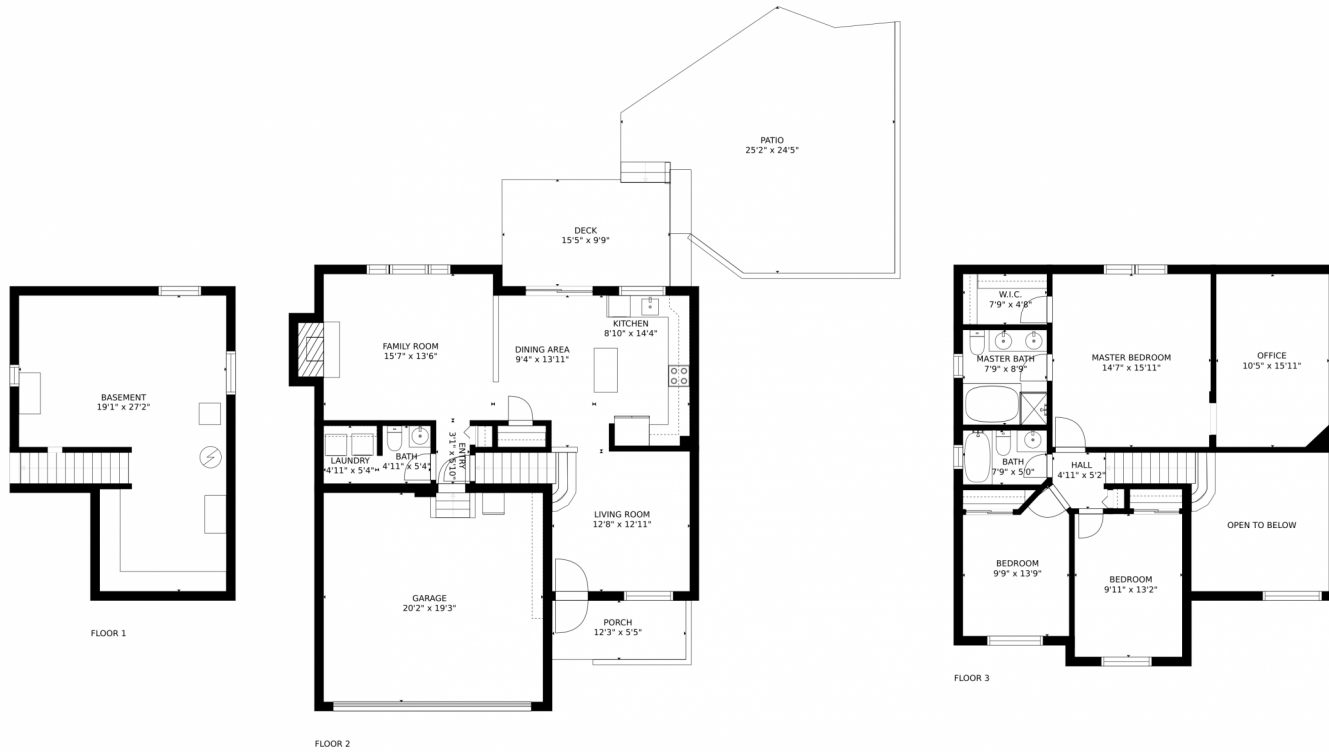
Walk to the Park & Pool. Close to both Founders Park & Mitchell Creek Park for your nature escape. Enjoy a walk or bike ride through the community trail system. Also close to historic downtown Castle Rock to the west and Castlewood Canyon to the east. If a well kept home is what you seek, give this gem a solid look.



**Gwen Hamm**  
720-530-5489  
gwenhamm@kw.com  
<https://gwenhamm.kw.com/>



# 328 Benton Street, Castle Rock, CO 80104 – All Levels



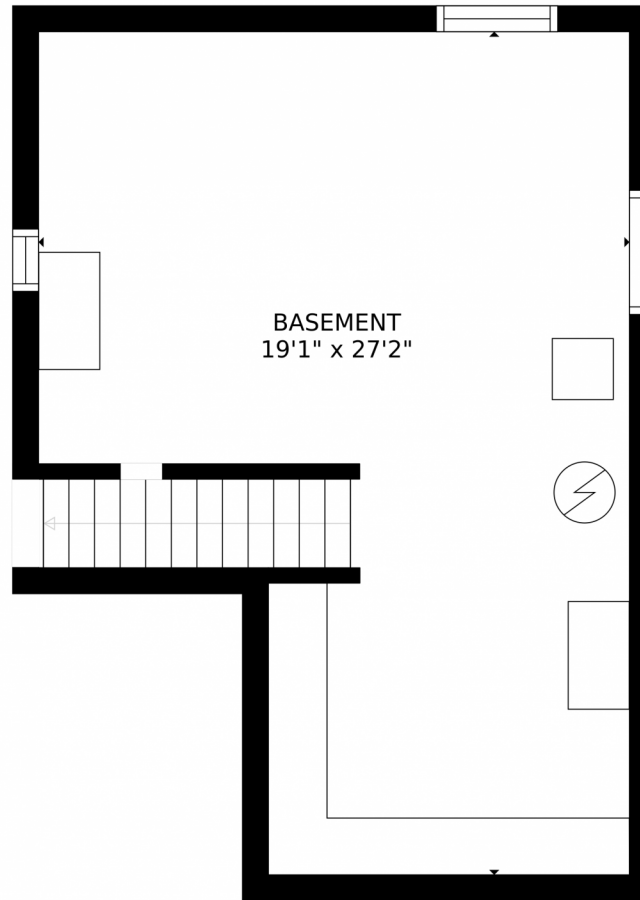
SIZES AND DIMENSIONS ARE APPROXIMATE, ACTUAL MAY VARY.

Disclaimer: Sizes and Dimensions are Approximate, Actual May Vary.



**Gwen Hamm**  
720-530-5489  
gwenhamm@kw.com  
<https://gwenhamm.kw.com/>





SIZES AND DIMENSIONS ARE APPROXIMATE, ACTUAL MAY VARY.

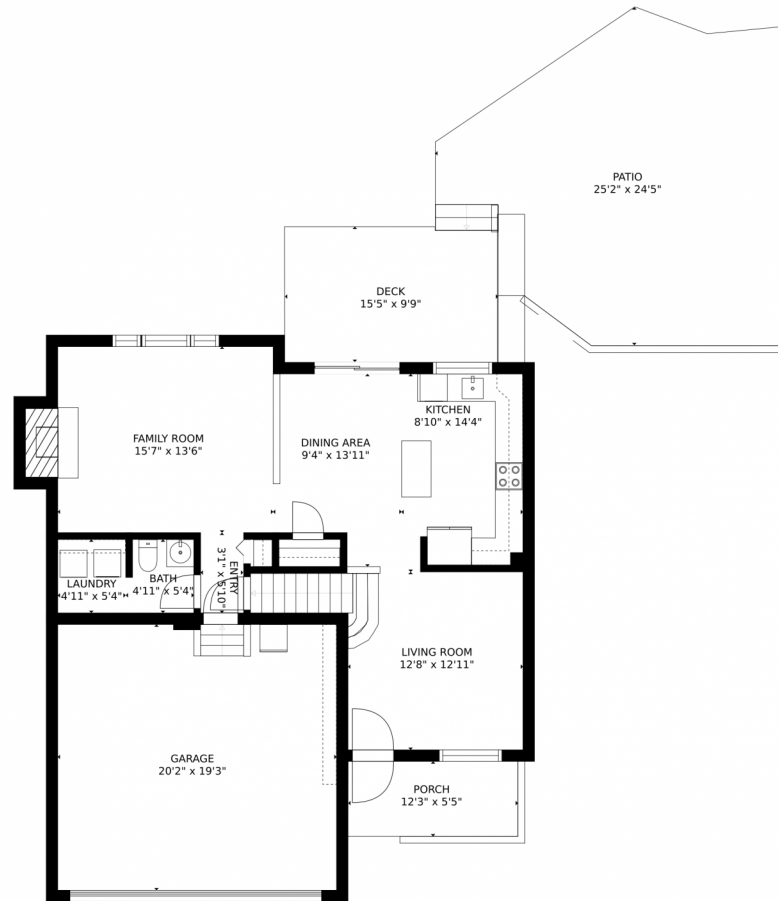
Disclaimer: Sizes and Dimensions are Approximate, Actual May Vary.



**Gwen Hamm**  
720-530-5489  
gwenhamm@kw.com  
<https://gwenhamm.kw.com/>



328 Benton Street, Castle Rock, CO 80104 – Main Level



SIZES AND DIMENSIONS ARE APPROXIMATE, ACTUAL MAY VARY.

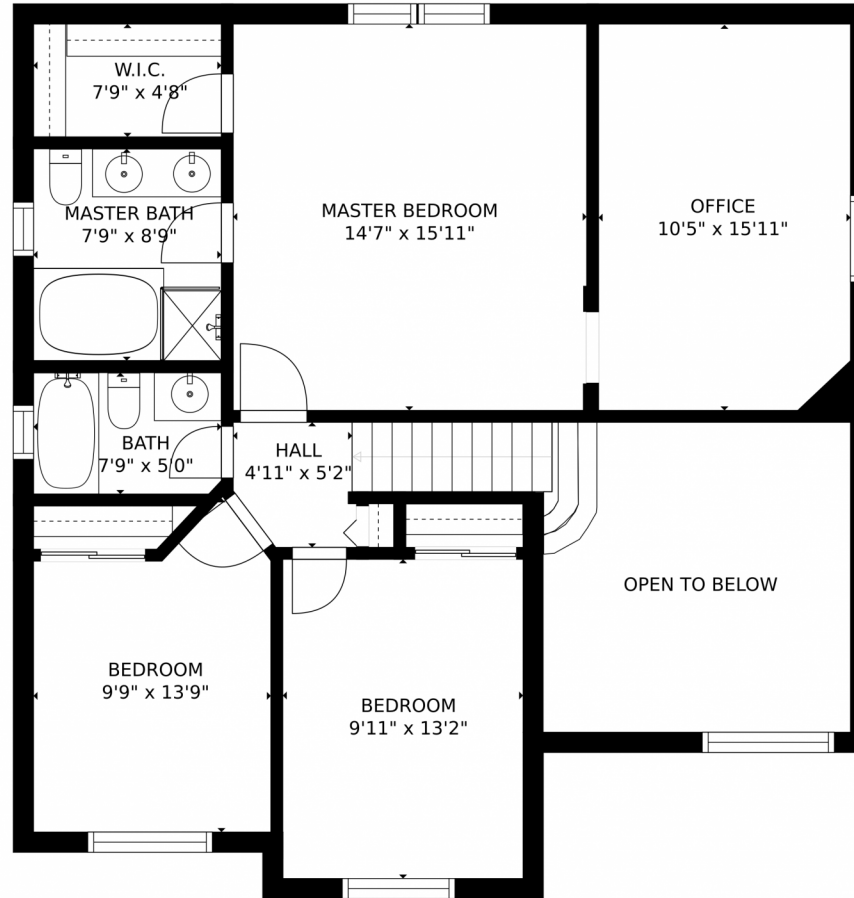
Disclaimer: Sizes and Dimensions are Approximate, Actual May Vary.



**Gwen Hamm**  
720-530-5489  
gwenhamm@kw.com  
<https://gwenhamm.kw.com/>



328 Benton Street, Castle Rock, CO 80104 – 2nd Level



SIZES AND DIMENSIONS ARE APPROXIMATE, ACTUAL MAY VARY.

Disclaimer: Sizes and Dimensions are Approximate, Actual May Vary.



**Gwen Hamm**  
720-530-5489  
gwenhamm@kw.com  
<https://gwenhamm.kw.com/>

