



2014 S Idalia Street
Aurora, CO 80013
COMMUNITY: Kingsborough

MLS # 9938204
PRICE \$400,000



Single Family



1296 SQFT



3 Beds



2 Baths



1 Car



0.14 Acre

PROPERTY DETAILS

Welcome home to the desirable Kingsborough community! Natural hardwoods and a luminous layout greet you to the main level of the home flawlessly transitioning from the living room into the kitchen making this space great for entertaining. The upper level includes the owner's suite with private access to the full bathroom and is completed by a second bedroom, both offering walk-in closets for your every storage need. This fantastic floor plan is nicely finished by a suite-style lower level featuring a spacious family room along with the home's third bedroom and a secondary full bathroom. The attached garage is accessed from your backyard or from the home complete with an extended deep design for even more storage space. Your next Summer BBQ will be a smashing success in the large backyard and outdoor living space complete with a patio area and mature landscaping for added privacy. Arrive anywhere in the Denver Metro area with ease as Highway 225 is just minutes away connecting you to the DTC or even Downtown along with light rail access just a mile from your new home. The entrance to Horseshoe Park is just 7 houses down the street offering endless miles of trails for jogging and biking along with a playground and tons of open space. Opt outside and live your best Colorado lifestyle with Cherry Creek Reservoir and State Park literally in the heart of Southeast Aurora and easily accessible from anywhere in the Denver area. The state park is



Tatyana Sturm

720-350-5909

tatyana@exitrealtydtc.com

<https://thestorckteam.com>

Scan code
for more
property
details



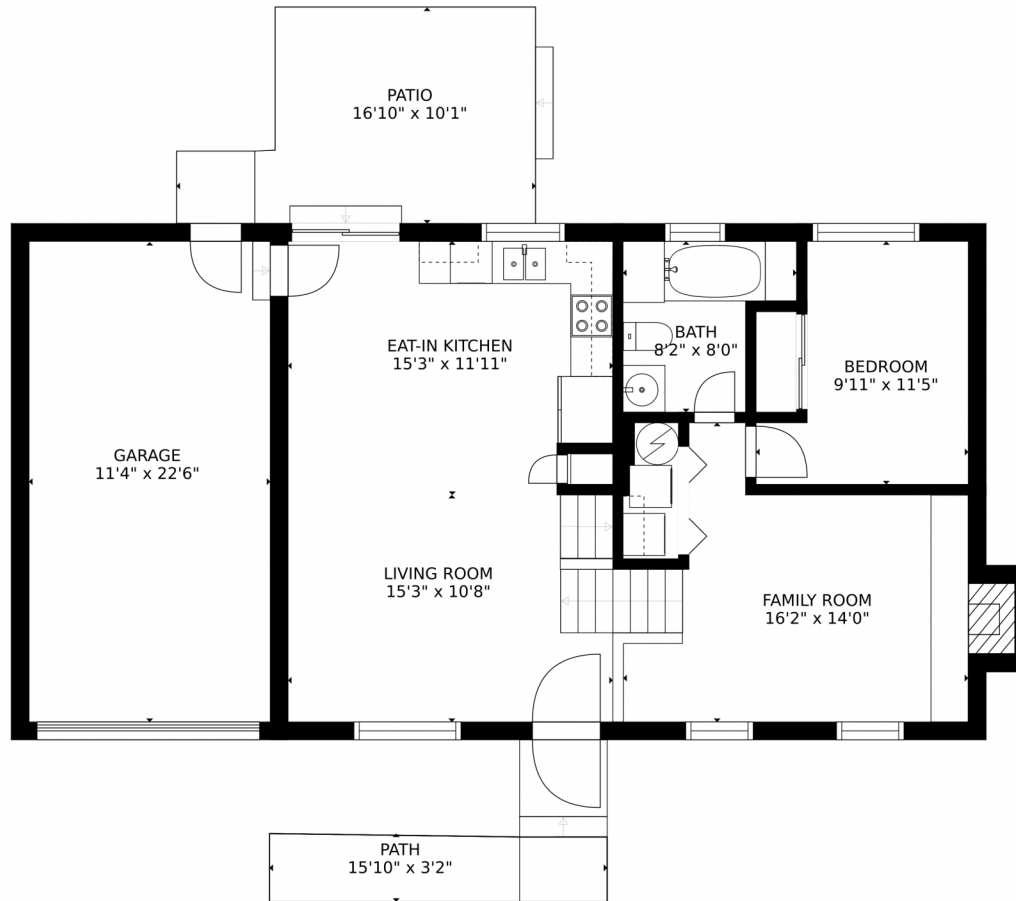
anchored around an 880 surface acre reservoir in the heart of the city offering everything from horseback riding to boating and fishing and even camping. Miles and miles of biking trails take you throughout the state park with enough endless trails to make an entire day of it, then enjoy a picnic around the reservoir and watch a magnificent sunset. Cherry Creek State Park is also home to a 107-acre off-leash dog park which includes a fully fenced area offering water access and walking trails. NO HOA!



Tatyana Sturm
720-350-5909
tatyana@exitrealtydtc.com
<https://thestorckteam.com>



2014 S Idalia Street, Aurora, CO 80013 – Main Level



SIZES AND DIMENSIONS ARE APPROXIMATE, ACTUAL MAY VARY.

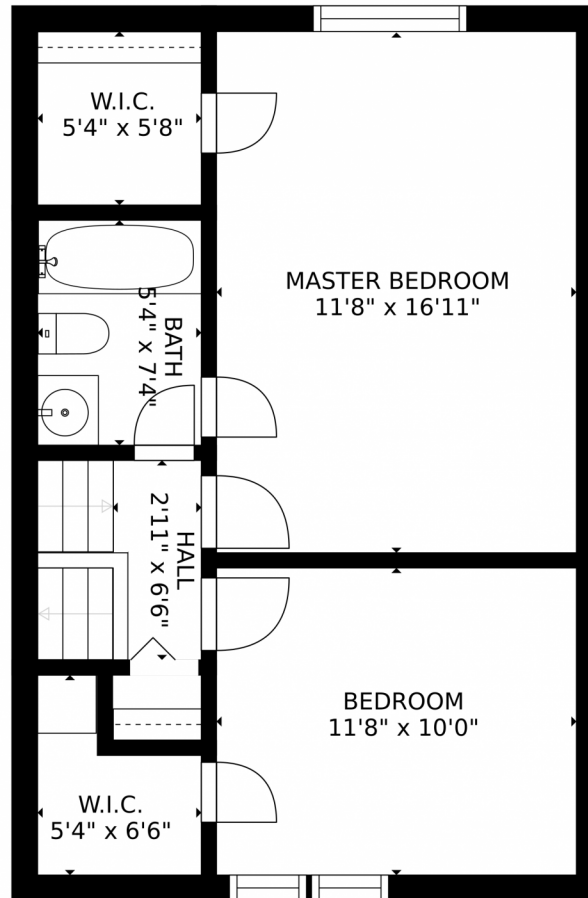
Disclaimer: Sizes and Dimensions are Approximate, Actual May Vary.



Tatyana Sturm
720-350-5909
tatyana@exitrealttydc.com
<https://thestorckteam.com>



2014 S Idalia Street, Aurora, CO 80013 – Upper Level



SIZES AND DIMENSIONS ARE APPROXIMATE, ACTUAL MAY VARY.

Disclaimer: Sizes and Dimensions are Approximate, Actual May Vary.



Tatyana Sturm
720-350-5909
tatyana@exitrealtydtc.com
<https://thestorckteam.com>



2014 S Idalia Street, Aurora, CO 80013 – All Levels



SIZES AND DIMENSIONS ARE APPROXIMATE, ACTUAL MAY VARY.

Disclaimer: Sizes and Dimensions are Approximate, Actual May Vary.



Tatyana Sturm
720-350-5909
tatyana@exitrealttydc.com
<https://thestorckteam.com>



Scan code
for more
property
details