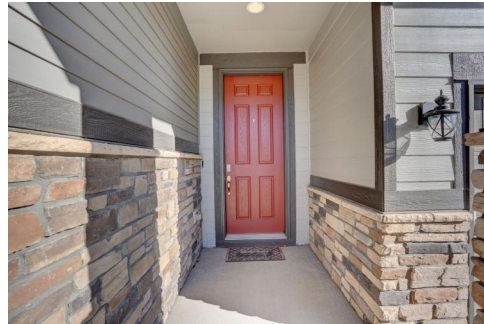




5022 S Wenatchee Circle
 Aurora, CO 80015
 COMMUNITY: Copperleaf

MLS # 6796735
 PRICE \$515,900



Single Family 1423 SQFT 2 Beds 2 Baths 2 Car 0.13 Acre

PROPERTY DETAILS

Welcome home to the highly desirable and sought-after Copperleaf community of Southeast Aurora! This stunning ranch home offers one-level living at its very finest boasting an open concept layout with a variety of options to create your perfect place to call home sweet home. Immediately upon entering you will find the secondary bedroom currently serving as the home office with a full bath just outside the bedroom door. The expansive formal dining area is a massive flex space offering endless potential. Next venture into the great-room style kitchen and living room complete with a breakfast nook making this area quietly nestled at the back of the home perfect for entertaining. The gourmet kitchen is an absolute dream with every designer detail imaginable including a massive center island and ample brilliant cabinetry for your every storage need. This fantastic floor plan is flawlessly finished with the owner's suite tucked away at the back of the home just off of the living room featuring a private en-suite bathroom and sprawling walk-in closet complete with a built-in organization system. Cool off in the one-of-a-kind community-only pool and Arboretum meeting your new neighbors, there's a regular pool and splash pool along with a stunning clubhouse available for your next party. Miles and miles of trails take you throughout the neighborhood so opting outside for a jog or a bike ride is never an issue. Residents of Copperleaf enjoy the award-winning education system of



Tatyana Sturm
 720-350-5909
 tatyana@exitrealttydc.com
 https://thestorckteam.com



Cherry Creek Schools including Eaglecrest High School. Enjoy endless dining, shopping, and entertainment options in the Southlands Outdoor Retail District featuring a full AMC Dine-In Movie Theater, abundant casual dining options along with higher-end restaurant options as well, and so many shopping choices. The Southlands Mall also features a robust courtyard area with a mini splash park in the Summer and a skating rink in the Winter.



Tatyana Sturm

720-350-5909

tatyana@exitrealtydtc.com

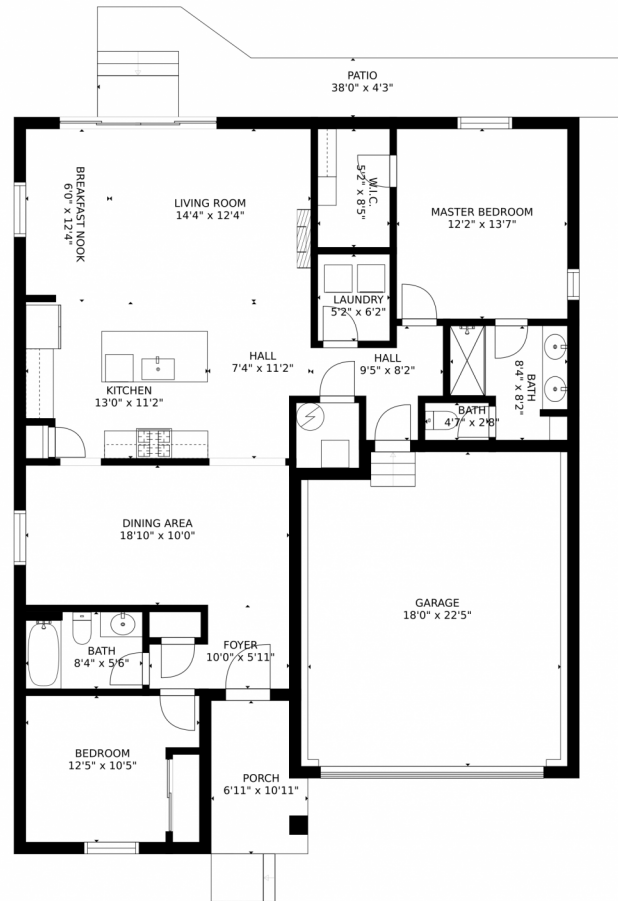
<https://thestorckteam.com>



Scan code
for more
property
details



5022 S Wenatchee Circle, Aurora, CO 80015 – Floor Plan



SIZES AND DIMENSIONS ARE APPROXIMATE, ACTUAL MAY VARY.

Disclaimer: Sizes and Dimensions are Approximate, Actual May Vary.



Tatyana Sturm
720-350-5909
tatyana@exitrealtydtc.com
<https://thestorckteam.com>

