

1803 South Australian Avenue  
West Palm Beach, FL 33409



Commercial



10314 SQFT



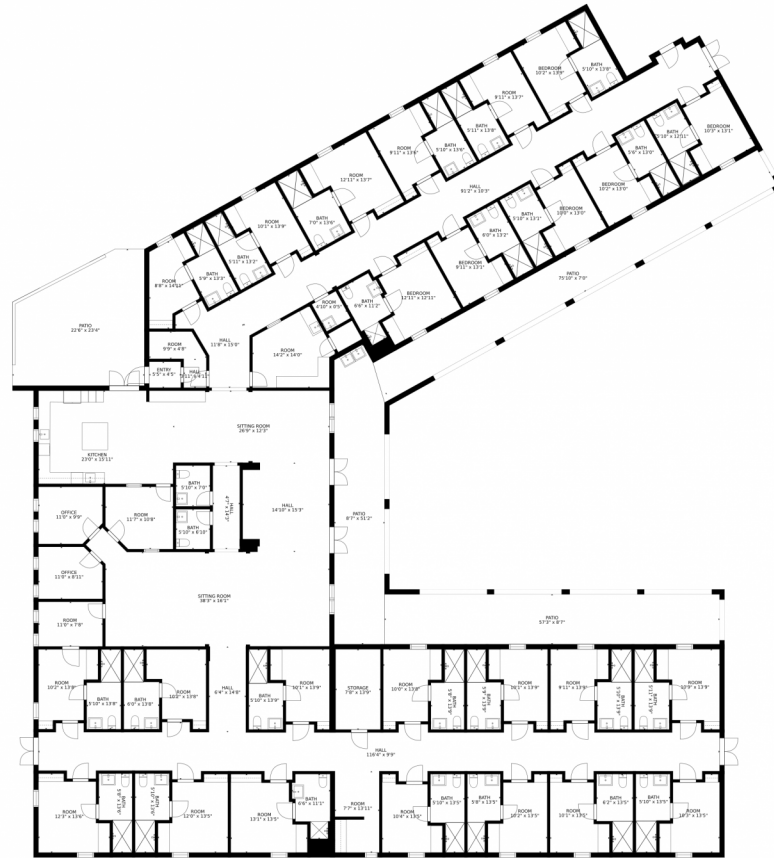
**Josh Slaybaugh**  
610-563-5484  
josh@behavioralhealthproperties.com



Scan code  
for more  
property  
details



# 1803 South Australian Avenue, West Palm Beach, FL 33409 – Main Floor



GROSS INTERNAL AREA  
FLOOR 1: 9530 sq. ft, EXCLUDED AREAS:  
PATIO: 1876 sq. ft  
TOTAL: 9530 sq. ft  
SIZES AND DIMENSIONS ARE APPROXIMATE, ACTUAL MAY VARY.



Disclaimer: Sizes and Dimensions are Approximate, Actual May Vary.



**Josh Slaybaugh**  
610-563-5484  
josh@behavioralhealthproperties.com

