



Single Family



2061 SQFT



4 Beds



2 Baths



2 Car



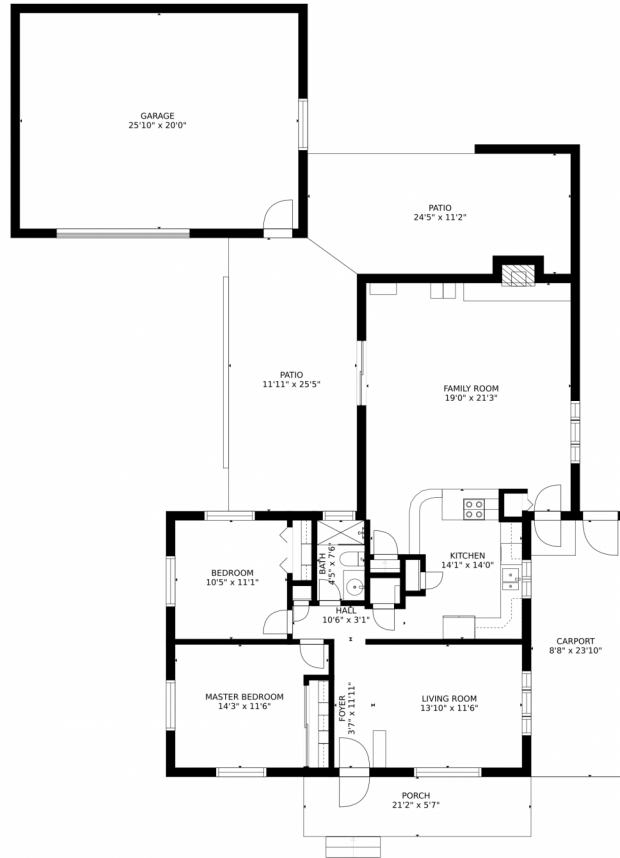
0.14 Acre

PROPERTY DETAILS

NEW PRICE!!! Ranch Style Home Featuring 4 Bedrooms (2 Non Conforming Bedrooms In the Basement) And 2 3/4 Baths*Not To Mention Large Family Room With Fireplace Open To Kitchen*2 Car Detached And Carport*Convenient To Most Amenities*And Many More.....

Chris Nguyen
303-521-6264
chrisbroker1@gmail.com





Estimated areas

GLA FLOOR 1: 0 sq. ft, excluded 808 sq. ft
GLA FLOOR 2: 1292 sq. ft, excluded 1513 sq. ft
Total GLA 1292 sq. ft, total scanned area 3613 sq. ft

SIZES AND DIMENSIONS ARE APPROXIMATE, ACTUAL MAY VARY.

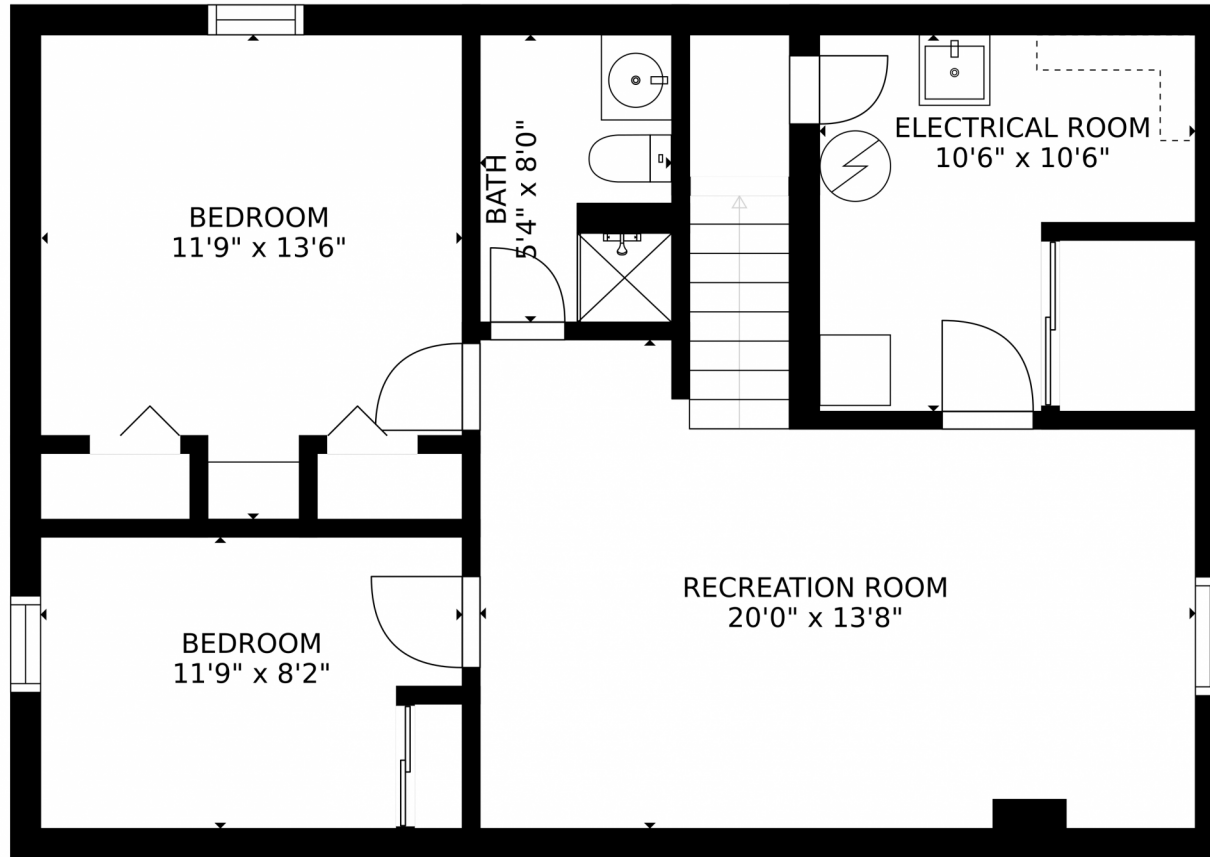


Disclaimer: Sizes and Dimensions are Approximate, Actual May Vary.

Chris Nguyen
303-521-6264
chrisbroker1@gmail.com



1189 S Beach Court, Denver, CO 80219 – Lower Level



Estimated areas
GLA FLOOR 1: 0 sq. ft, excluded 808 sq. ft
GLA FLOOR 2: 1292 sq. ft, excluded 1513 sq. ft
Total GLA 1292 sq. ft, total scanned area 3613 sq. ft
SIZES AND DIMENSIONS ARE APPROXIMATE, ACTUAL MAY VARY.

Disclaimer: Sizes and Dimensions are Approximate, Actual May Vary.

Chris Nguyen
303-521-6264
chrisbroker1@gmail.com

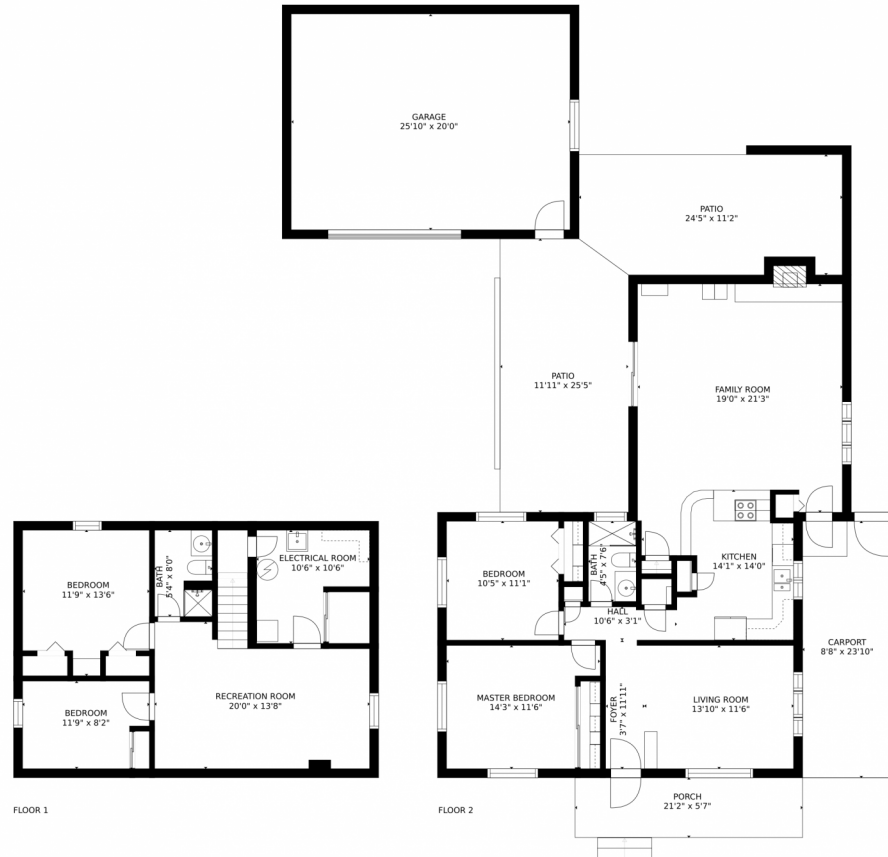
Scan code for more property details



The QR code is located to the right of the text. Below the text is a small icon of a smartphone displaying a QR code.



1189 S Beach Court, Denver, CO 80219 – All Levels



Estimated areas

GLA FLOOR 1: 0 sq. ft, excluded 808 sq. ft
GLA FLOOR 2: 1292 sq. ft, excluded 1513 sq. ft
Total GLA 1292 sq. ft, total scanned area 3613 sq. ft

SIZES AND DIMENSIONS ARE APPROXIMATE, ACTUAL MAY VARY.



Disclaimer: Sizes and Dimensions are Approximate, Actual May Vary.

Chris Nguyen
303-521-6264
chrisbroker1@gmail.com

