



16195 E 54th Avenue  
 Denver, CO 80239  
 COMMUNITY: Parkfield

MLS # 2634219  
 PRICE \$450,000



Single Family



2102 SQFT



3 Beds



2 Baths



2 Car



0.1 Acre

## PROPERTY DETAILS

Welcome Home to Parkfield! This beautifully updated North-facing ranch home has it all from new rich hardwoods throughout the home to brand new interior paint and baseboards making it move-in ready to the max. An open concept, great room style main living area greets you upon arrival showcasing a multitude of luminous picture windows leaving this space drenched in natural lighting. The kitchen is an absolute dream featuring Quartz countertops, abundant brilliant cabinetry, and an eat-in dining nook. The owner's suite offers a private full bathroom and spacious walk-in closet with two generously sized additional bedrooms and another full bathroom nearby allowing for room to grow and so much more. The 800 square foot unfinished basement offers endless possibilities including the laundry area of the home along with tons of space for you to design your own layout of a teen or guest suite or movie lounge. You will love the sizable backyard and outdoor living space backing to a community greenbelt with plenty of room for lounge and play. Opt outside and live your best Colorado lifestyle with the Montbello Recreation Center and Parkfield Lake Park just minutes walking distance. The Montbello Recreation Center offers an outdoor skate park, tennis courts, two baseball diamonds, and a desirable fitness center with classes and an indoor pool. Parkfield Lake Park has miles and miles of walking and biking trails around the lake with convenient parking at many entrance



**Tatyana Sturm**  
 720-350-5909  
 tatyana@exitrealtydtc.com  
 https://thestorckteam.com



Scan code  
 for more  
 property  
 details



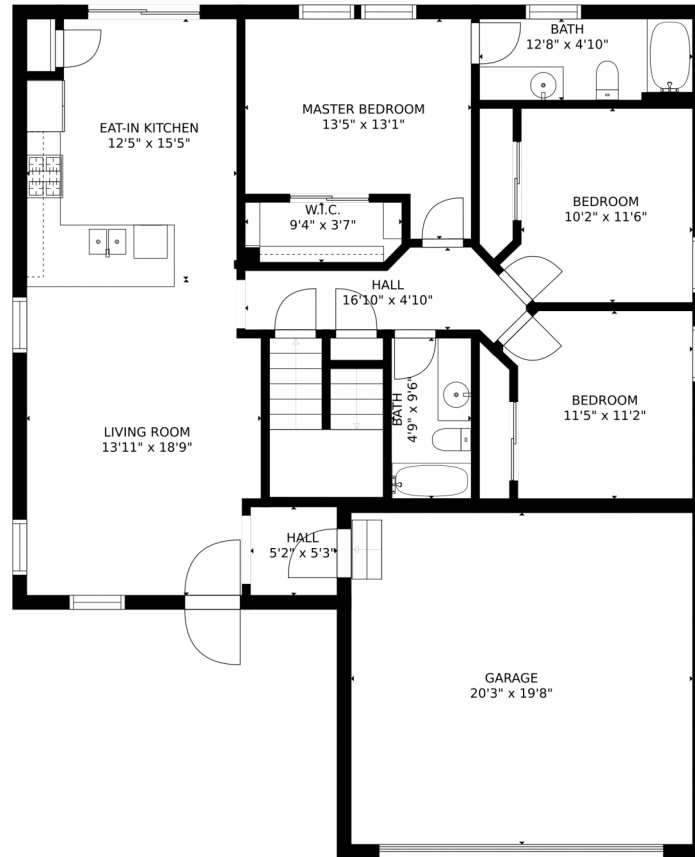
nooks creating a serene setting for an evening stroll. The South entrance to the Rocky Mountain Arsenal National Wildlife Refuge is also just minutes away where you can enjoy award-winning fishing, 10 miles of hiking and biking trails, and driving tracks where you can view many of America's most famous prairie wildlife including bison, deer, and many species of birds. Any commute is a snap with easy accessibility to Pena Blvd and I-70, whether you are working at DIA or Downtown you can get there worry-free.



**Tatyana Sturm**  
720-350-5909  
tatyana@exitrealtydtc.com  
<https://thestorckteam.com>



16195 E 54th Avenue, Denver, CO 80239 – Main Level



Estimated areas

GLA FLOOR 1: 0 sq. ft, excluded 746 sq. ft  
GLA FLOOR 2: 1353 sq. ft, excluded 445 sq. ft  
Total GLA 1353 sq. ft, total scanned area 2544 sq. ft

SIZES AND DIMENSIONS ARE APPROXIMATE, ACTUAL MAY VARY.



Disclaimer: Sizes and Dimensions are Approximate, Actual May Vary.

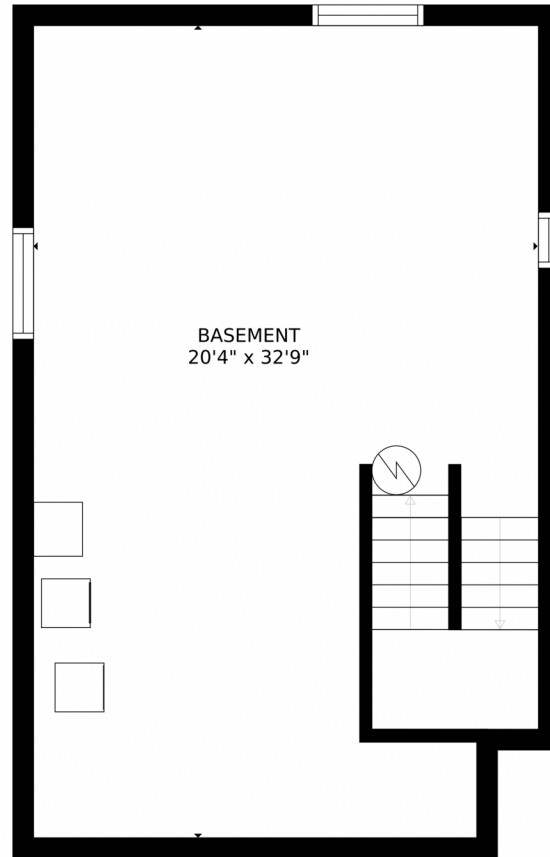


**Tatyana Sturm**  
720-350-5909  
tatyana@exitrealtydtc.com  
<https://thestorckteam.com>



Scan code  
for more  
property  
details





Estimated areas  
GLA FLOOR 1: 0 sq. ft, excluded 746 sq. ft  
GLA FLOOR 2: 1353 sq. ft, excluded 445 sq. ft  
Total GLA 1353 sq. ft, total scanned area 2544 sq. ft  
SIZES AND DIMENSIONS ARE APPROXIMATE, ACTUAL MAY VARY.



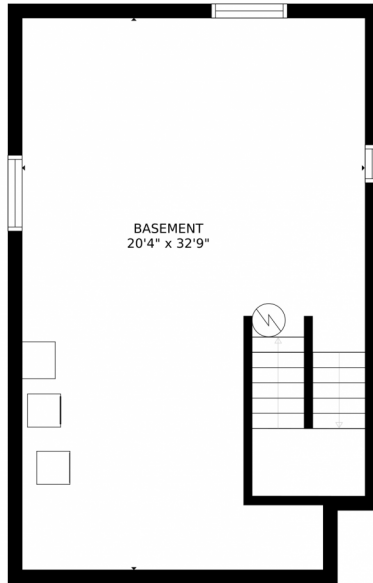
Disclaimer: Sizes and Dimensions are Approximate, Actual May Vary.



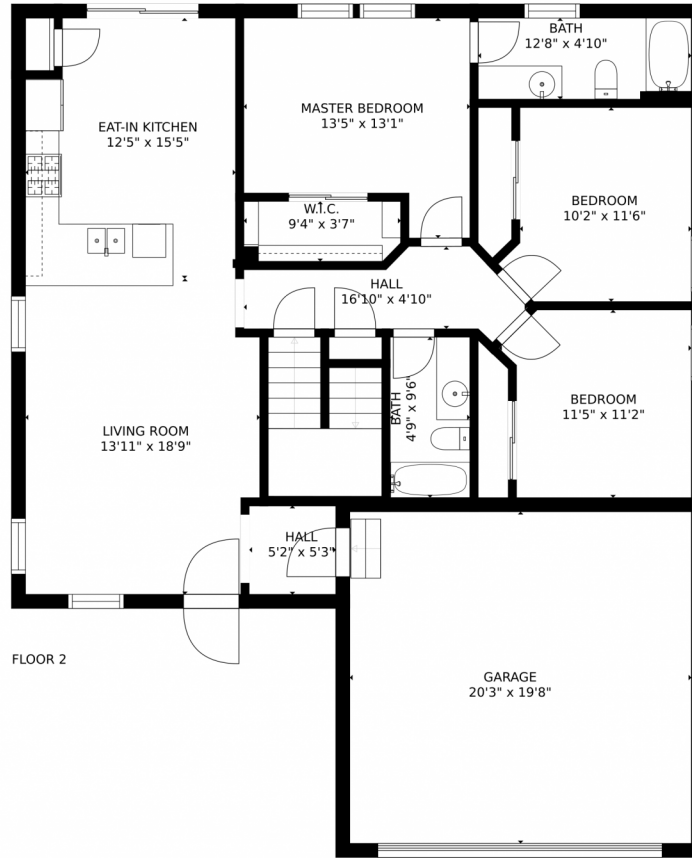
**Tatyana Sturm**  
720-350-5909  
tatyana@exitrealtydtc.com  
<https://thestorckteam.com>



# 16195 E 54th Avenue, Denver, CO 80239 – All Levels



FLOOR 1



FLOOR 2

### Estimated areas

GLA FLOOR 1: 0 sq. ft, excluded 746 sq. ft  
GLA FLOOR 2: 1353 sq. ft, excluded 445 sq. ft  
Total GLA 1353 sq. ft, total scanned area 2544 sq. ft

SIZES AND DIMENSIONS ARE APPROXIMATE, ACTUAL MAY VARY.



Disclaimer: Sizes and Dimensions are Approximate, Actual May Vary.



**Tatyana Sturm**  
720-350-5909  
tatyana@exitrealtydtc.com  
<https://thestorckteam.com>



Scan code  
for more  
property  
details

