

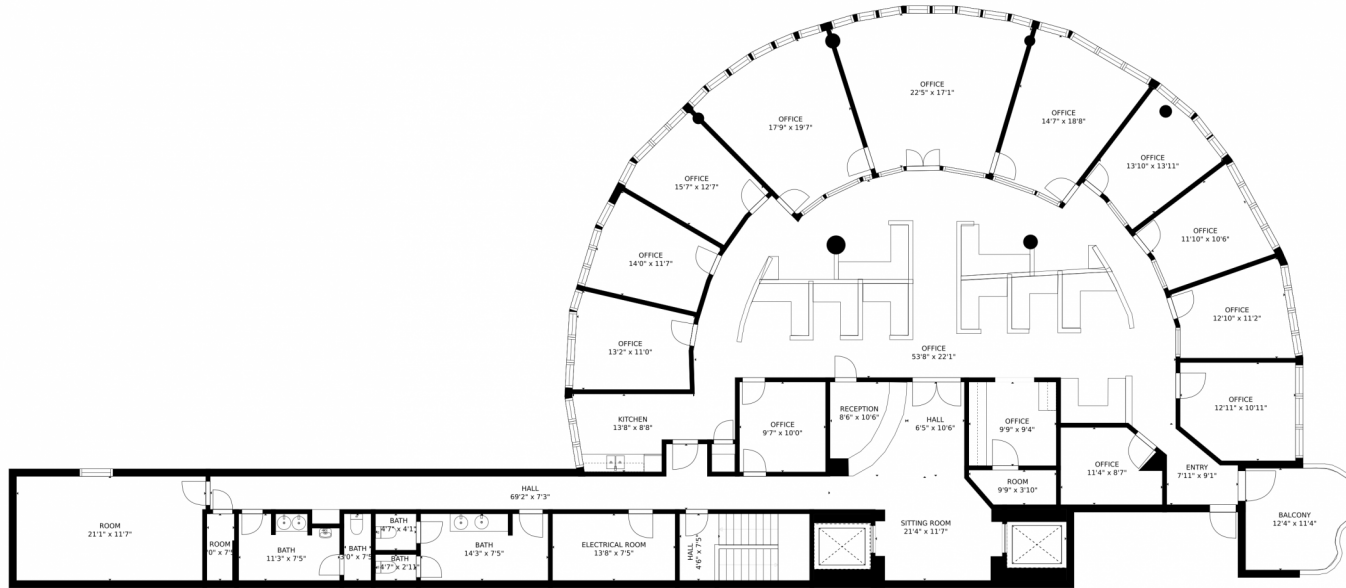


Commercial



5166 SQFT

9600 Northwest 25th Street, Doral, FL 33172 – Floor



Estimated areas
GLA FLOOR 1: 4749 sq. ft, excluded 555 sq. ft
Total GLA 4749 sq. ft, total scanned area 5304 sq. ft

SIZES AND DIMENSIONS ARE APPROXIMATE, ACTUAL MAY VARY.



Disclaimer: Sizes and Dimensions are Approximate, Actual May Vary.

Tony De Rosa
305-490-4610
tony@westvest.com



Scan code
for more
property
details

