



1991 County Road 132
 Elizabeth, CO 80107
 COMMUNITY: none

MLS # 7081523
 PRICE \$899,000



Single Family 2820 SQFT 3 Beds 3 Baths 2 Car 40 Acre

PROPERTY DETAILS

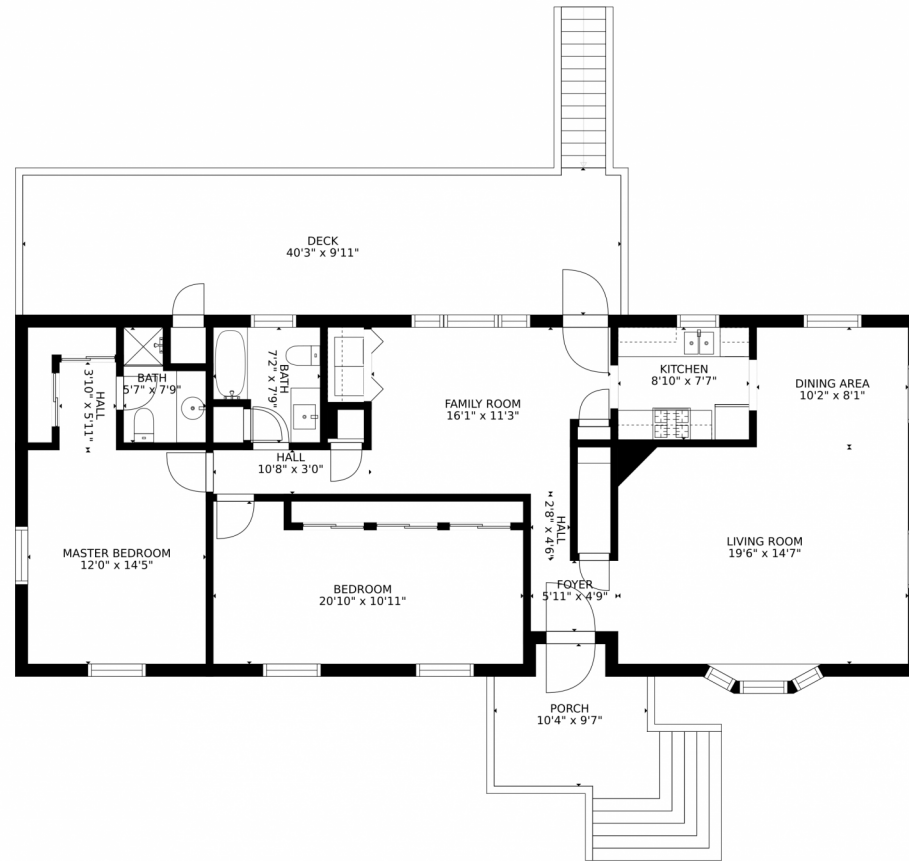
Beautiful close-in 40 acres with soaring views and towering Ponderosa Pines. Property consists of a 2 bedroom, 2 bath (newly remodeled) ranch house with a mountain view, and a studio apt with a full bath, private entrance, 2nd laundry and full kitchen. Huge barn with oversized door and loft, also a run-in shed, chicken coop and small animal pens, fully fenced and cross fenced animal ready turnouts. Live in the apartment while you build your custom dream home and then use the original home as a guest house, for ranch help, or for additional income! Low Elbert County taxes, private well and septic, and less than 5 minutes to the Safeway, schools and shopping. Currently rented through the end of the year for \$3500/month (\$2500 for the house and \$1000 for the apartment). Initial subdividing work has been started to make this two, twenty-acre parcels and there is a new WATER DECREE IN PLACE FOR TWO UPPER DAWSON WELLS.



Tatyana Sturm
 720-350-5909
 tatyana@exitrealttydtc.com
 https://thestorckteam.com



1991 County Road 132, Elizabeth, CO 80107 – Main Level



Estimated areas

GLA FLOOR 1: 0 sq. ft, excluded 1977 sq. ft
GLA FLOOR 2: 1397 sq. ft, excluded 555 sq. ft
Total GLA 1397 sq. ft, total scanned area 3929 sq. ft

SIZES AND DIMENSIONS ARE APPROXIMATE, ACTUAL MAY VARY.



Disclaimer: Sizes and Dimensions are Approximate, Actual May Vary.

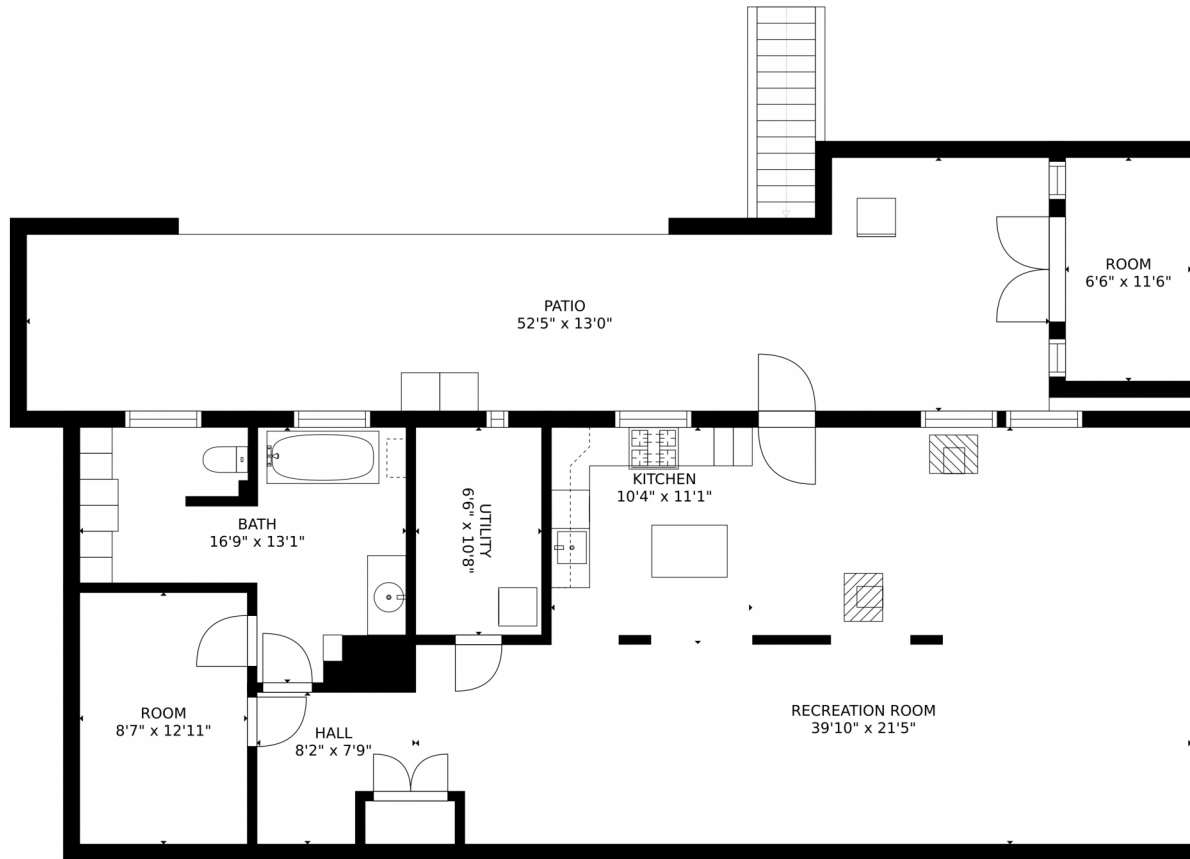


Tatyana Sturm
720-350-5909
tatyana@exitrealttydc.com
<https://thestorckteam.com>



Scan code
for more
property
details

1991 County Road 132, Elizabeth, CO 80107 – Lower Level



Estimated areas

GLA FLOOR 1: 0 sq. ft, excluded 1977 sq. ft
GLA FLOOR 2: 1397 sq. ft, excluded 555 sq. ft
Total GLA 1397 sq. ft, total scanned area 3929 sq. ft

SIZES AND DIMENSIONS ARE APPROXIMATE, ACTUAL MAY VARY.



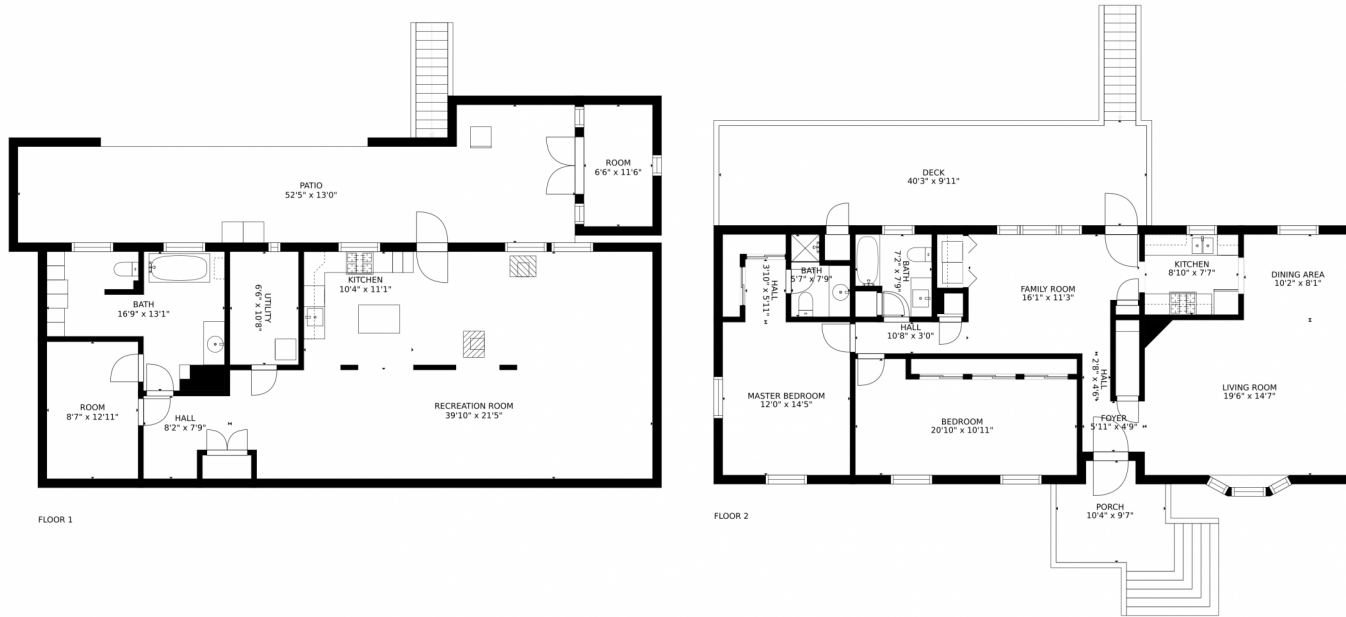
Disclaimer: Sizes and Dimensions are Approximate, Actual May Vary.



Tatyana Sturm
720-350-5909
tatyana@exitrealtydtc.com
<https://thestorckteam.com>



1991 County Road 132, Elizabeth, CO 80107 – All Levels



Estimated areas
GLA FLOOR 1: 0 sq. ft, excluded 1977 sq. ft
GLA FLOOR 2: 1397 sq. ft, excluded 555 sq. ft
Total GLA 1397 sq. ft, total scanned area 3929 sq. ft
SIZES AND DIMENSIONS ARE APPROXIMATE, ACTUAL MAY VARY.



Disclaimer: Sizes and Dimensions are Approximate, Actual May Vary.



Tatyana Sturm
720-350-5909
tatyana@exitrealtydtc.com
<https://thestorckteam.com>



Scan code
for more
property
details

