



26798 E Maple Avenue
 Aurora, CO 80018
 COMMUNITY: Harmony

MLS # 8813500
 PRICE \$525,000



Single Family 2118 SQFT 3 Beds 2/1 Baths 2 Car 0.14 Acre

PROPERTY DETAILS

Welcome Home to Harmony, a new community located in East Aurora! This sparkling 2-Story abode was just completed from Dream Finders Homes in 2020, why wait to build when you can have nearly new right now? This phenomenal layout offers an open concept, great room-style living space on the main level flawlessly transitioning you from the living room into the dining and kitchen making this home great for entertaining. Upstairs you are greeted by a sunny and spacious loft area offering many versatile options to fit your every lifestyle need, further leading to the fabulous owner's suite complete with a private en-suite bathroom and massive walk-in closet. Two generously sized additional bedrooms, a secondary full bathroom, and the laundry room complete the upper level of this home. Out in the backyard, there's plenty of room for lounge and play including a covered patio area in your new outdoor living space. You will love living in Harmony just minutes from E-470 making any commute a snap. Harmony is a new master-planned community offering a pool, clubhouse, and fitness center at the community center which also hosts weekly food truck parties every Wednesday. Opt outside for a day of play at the park and playground or take your fur babies to the dog park also located in this tight-knit community. During the holiday season, Harmony hosts a home decorating contest, and even Santa and the Grinch have been spotted saying hello. Miles and miles of



Tatyana Sturm
 720-350-5909
 tatyana@exitrealtydtc.com
 https://thestorckteam.com



trails are also found for the walking, jogging, or biking enthusiast in your home. Enjoy endless dining, shopping, and entertainment options in the Southlands Outdoor Retail District featuring a full AMC Dine-In Movie Theater, abundant casual dining options along with higher-end restaurant options as well, and so many shopping choices. The Southlands Mall also features a robust courtyard area with a mini splash park in the Summer and a skating rink in the Winter.



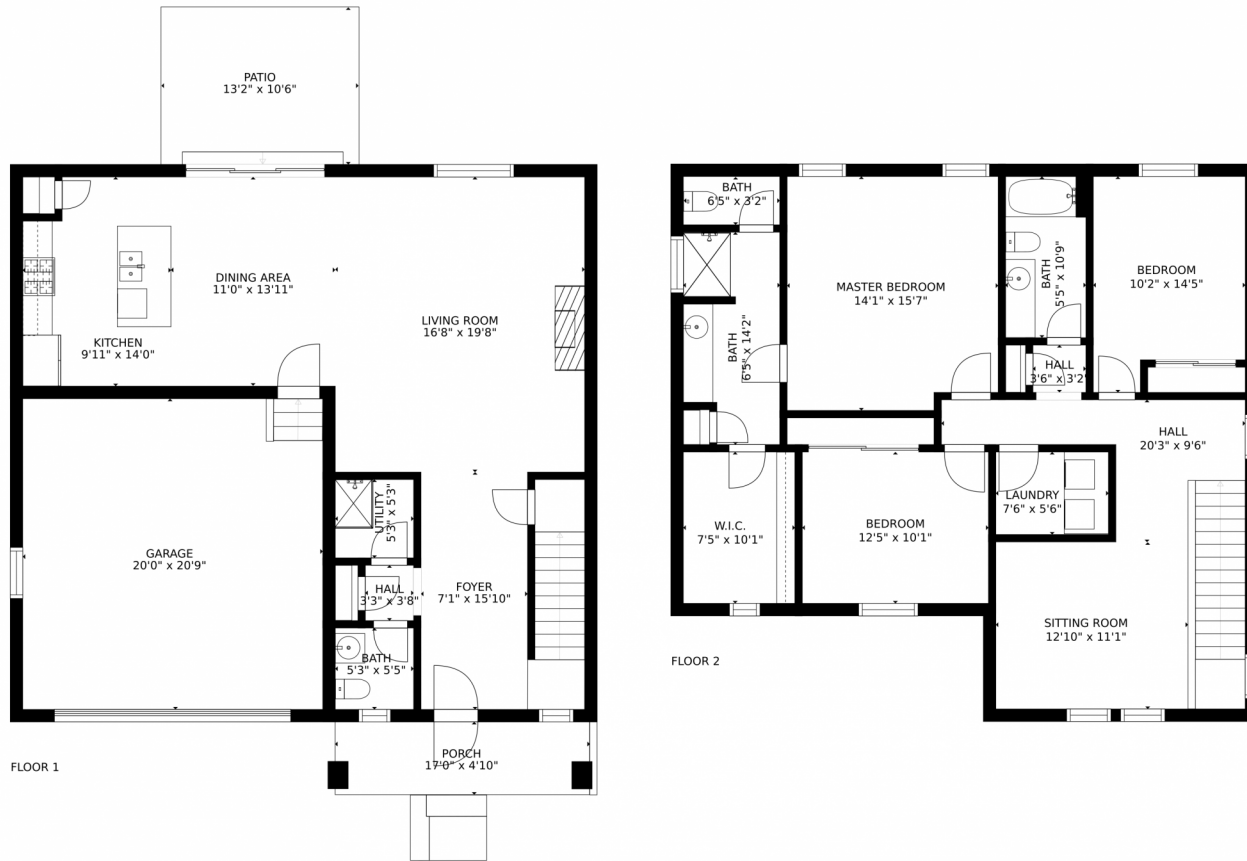
Tatyana Sturm
720-350-5909
tatyana@exitrealtydtc.com
<https://thestorckteam.com>



Scan code
for more
property
details



26798 E Maple Avenue, Aurora, CO 80018 – All Levels



Estimated areas

GLA FLOOR 1: 812 sq. ft, excluded 865 sq. ft
GLA FLOOR 2: 1310 sq. ft, excluded 0 sq. ft
Total GLA 2122 sq. ft, total scanned area 2987 sq. ft

SIZES AND DIMENSIONS ARE APPROXIMATE, ACTUAL MAY VARY.



Disclaimer: Sizes and Dimensions are Approximate, Actual May Vary.



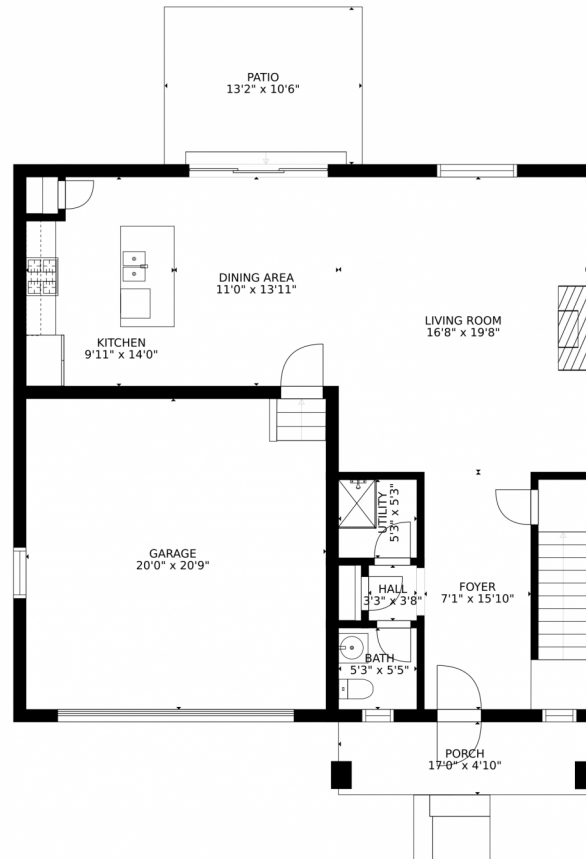
Tatyana Sturm
720-350-5909
tatyana@exitrealttydtc.com
<https://thestorckteam.com>



Scan code
for more
property
details



26798 E Maple Avenue, Aurora, CO 80018 – Main Level



Estimated areas

GLA FLOOR 1: 812 sq. ft, excluded 865 sq. ft
GLA FLOOR 2: 1310 sq. ft, excluded 0 sq. ft
Total GLA 2122 sq. ft, total scanned area 2987 sq. ft

SIZES AND DIMENSIONS ARE APPROXIMATE, ACTUAL MAY VARY.



Disclaimer: Sizes and Dimensions are Approximate, Actual May Vary.



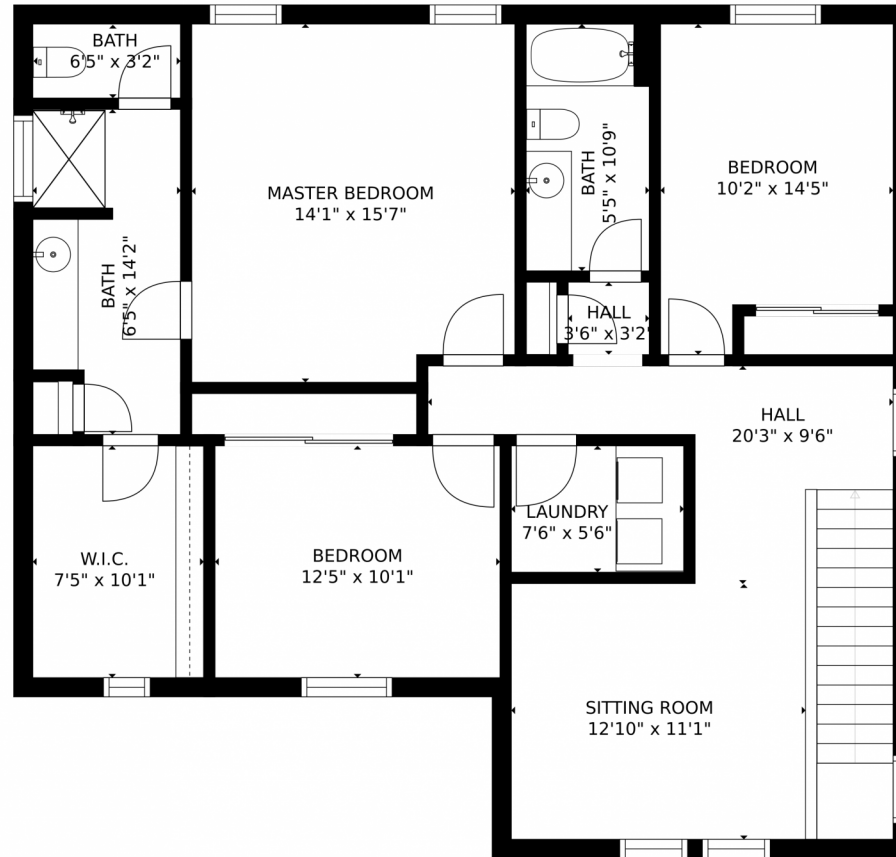
Tatyana Sturm
720-350-5909
tatyana@exitrealtydtc.com
<https://thestorckteam.com>



Scan code
for more
property
details



26798 E Maple Avenue, Aurora, CO 80018 – 2nd Level



Estimated areas

GLA FLOOR 1: 812 sq. ft, excluded 865 sq. ft
GLA FLOOR 2: 1310 sq. ft, excluded 0 sq. ft
Total GLA 2122 sq. ft, total scanned area 2987 sq. ft

SIZES AND DIMENSIONS ARE APPROXIMATE, ACTUAL MAY VARY.



Disclaimer: Sizes and Dimensions are Approximate, Actual May Vary.



Tatyana Sturm
720-350-5909
tatyana@exitrealtydtc.com
<https://thestorckteam.com>



Scan code
for more
property
details

