



20757 E Maplewood Lane
Centennial, CO 80016

COMMUNITY: Greenfield

MLS # 2679822
PRICE \$650,000



Single Family



2800 SQFT



4 Beds



3/1 Baths



3 Car



0.32 Acre

PROPERTY DETAILS

Welcome Home to the Greenfield community of desirable Southeast Aurora! This sprawling 2-story abode truly has it all and many honey-do items have already been honey-done making it move-in ready to the max. Many updates include new exterior paint, new interior paint throughout most of the home, new hardwood flooring and brand new carpet in the basement. All HVAC systems and water heater are just a year old. Massive solar system is owned outright and will practically eliminate electric bills. The addition of house-wide double-cell motorized smart blinds, as well as a beautifully xeriscaped front yard, will greatly lower all your utility bills. The kitchen has been fabulously remastered offering brand new Quartz countertops and backsplash accents. The park-inspired backyard is a dream and was designed for the entertainer in your home. This nearly half-acre elongated lot is one of the best yards in all of Greenfield. You will love living in this perfectly maintained neighborhood. Greenfield has miles of trails connecting you to the duck pond, clubhouse, and beyond to the Piney Creek Trail and Cherry Creek Pathways. Make a splash and meet your neighbors this Summer at the community swimming pool and tennis courts, or at one of the many community events hosted in Greenfield for all major holidays including back to school and so much more. Three community parks include acres of open space, a basketball court, and a playground. Residents of



Tatyana Sturm

720-350-5909

tatyana@exitrealtydtc.com

<https://thestorckteam.com>



Scan code
for more
property
details



Greenfield have access to the award-winning Cherry Creek School District and Grandview High School. Enjoy endless dining, shopping, and entertainment options in the Southlands Outdoor Retail District featuring a full AMC Dine-In Movie Theater, abundant casual dining options along with higher-end restaurant options as well, and so many shopping choices. The Southlands Mall also features a robust courtyard area with a mini splash park in the Summer and a skating rink in the Winter.



Tatyana Sturm

720-350-5909

tatyana@exitrealtydtc.com

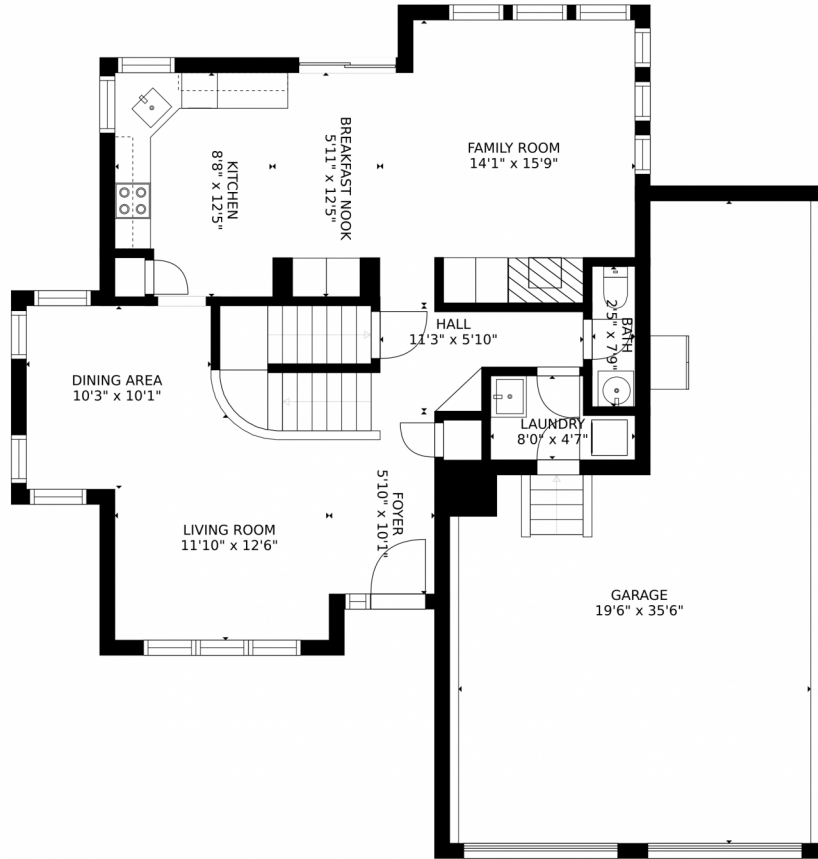
<https://thestorckteam.com>



Scan code
for more
property
details



20757 E Maplewood Lane, Centennial, CO 80016 — Main Level



Estimated areas

GLA FLOOR 1: 0 sq. ft., excluded 808 sq. ft.
GLA FLOOR 2: 383 sq. ft., excluded 621 sq. ft.
GLA FLOOR 3: 1088 sq. ft., excluded 298 sq. ft.
Total GLA 2073 sq. ft., total scanned area 3800 sq. ft.

SIZES AND DIMENSIONS ARE APPROXIMATE, ACTUAL MAY VARY.



Disclaimer: Sizes and Dimensions are Approximate, Actual May Vary.



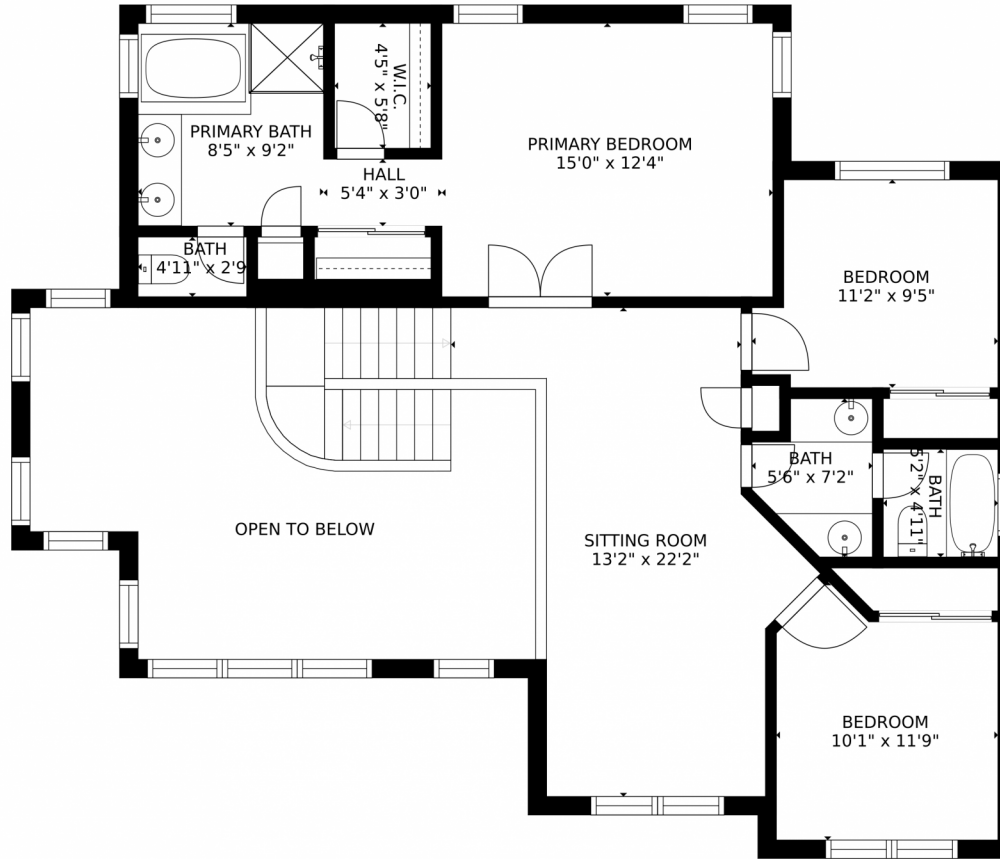
Tatyana Sturm
720-350-5909
tatyana@exitrealttydc.com
<https://thestorckteam.com>



Scan code
for more
property
details



20757 E Maplewood Lane, Centennial, CO 80016 – 2nd Level



Estimated areas

GLA FLOOR 1: 0 sq. ft., excluded 808 sq. ft.
GLA FLOOR 2: 363 sq. ft., excluded 621 sq. ft.
GLA FLOOR 3: 1088 sq. ft., excluded 298 sq. ft.
Total GLA 2073 sq. ft., total scanned area 3800 sq. ft.

SIZES AND DIMENSIONS ARE APPROXIMATE, ACTUAL MAY VARY.



Disclaimer: Sizes and Dimensions are Approximate, Actual May Vary.



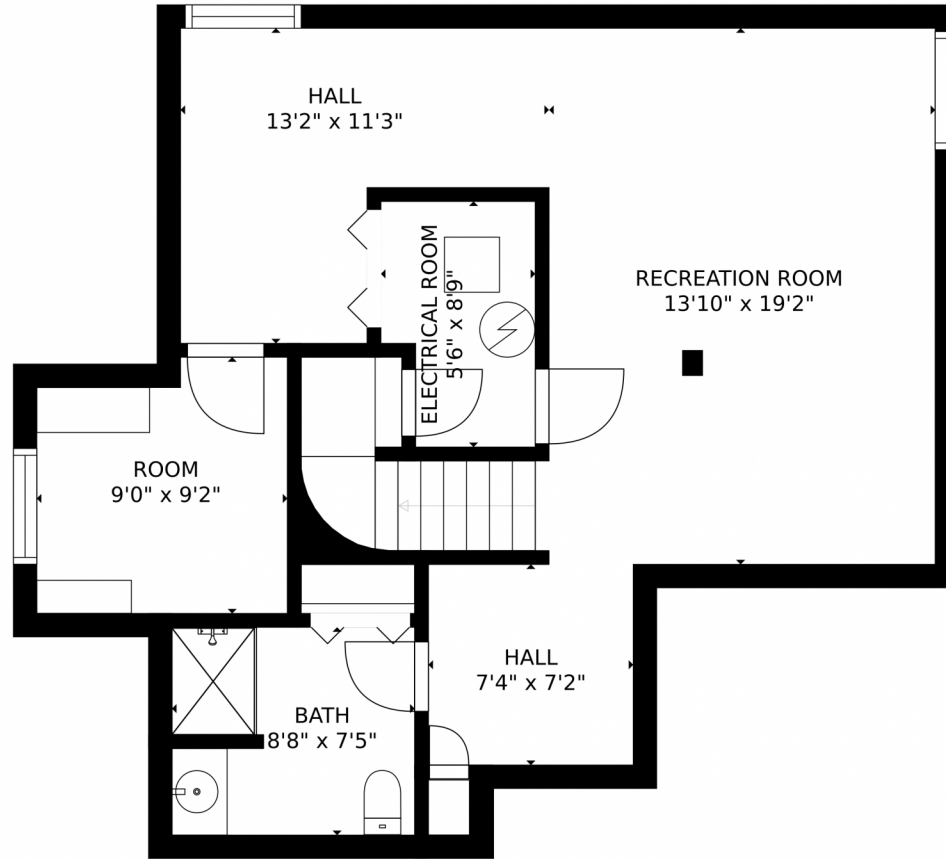
Tatyana Sturm
720-350-5909
tatyana@exitrealtydtc.com
<https://thestorckteam.com>



Scan code
for more
property
details



20757 E Maplewood Lane, Centennial, CO 80016 — Basement



Estimated areas

GLA FLOOR 1: 0 sq. ft., excluded 808 sq. ft.
GLA FLOOR 2: 385 sq. ft., excluded 621 sq. ft.
GLA FLOOR 3: 1088 sq. ft., excluded 298 sq. ft.
Total GLA 2073 sq. ft., total scanned area 3800 sq. ft.

SIZES AND DIMENSIONS ARE APPROXIMATE, ACTUAL MAY VARY.



Disclaimer: Sizes and Dimensions are Approximate, Actual May Vary.



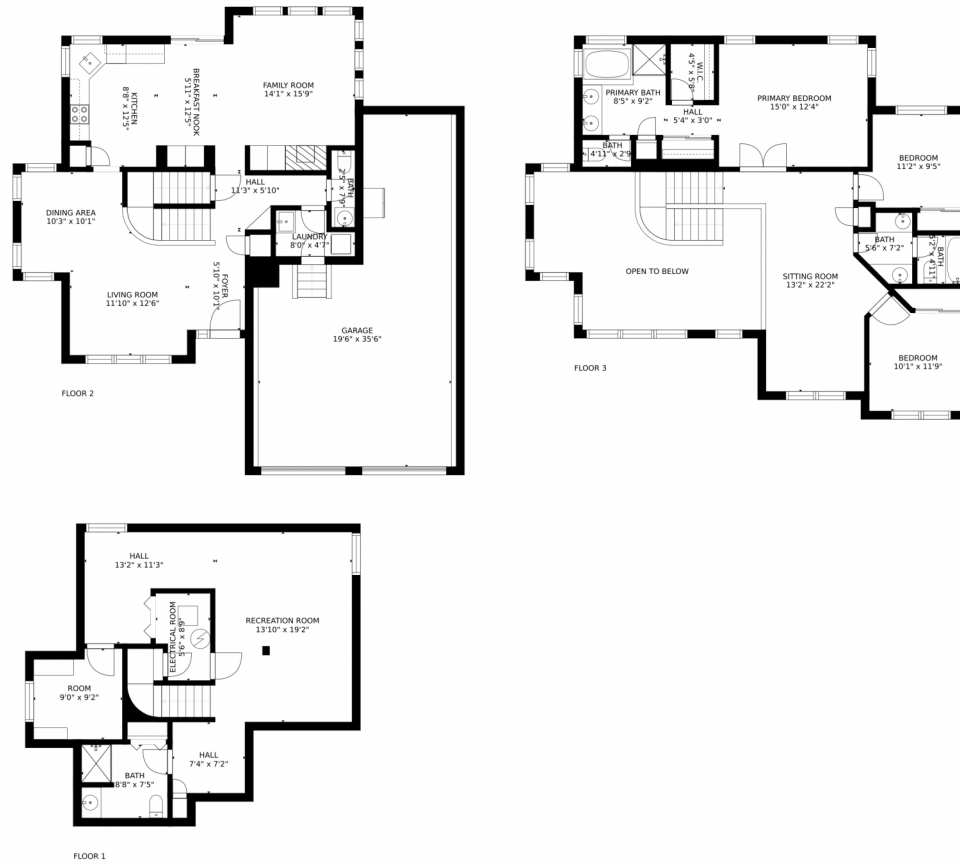
Tatyana Sturm
720-350-5909
tatyana@exitrealtydtc.com
<https://thestorckteam.com>



Scan code
for more
property
details



20757 E Maplewood Lane, Centennial, CO 80016 – All Levels



Estimated areas

GLA FLOOR 1: 0 sq. ft, excluded 808 sq. ft
GLA FLOOR 2: 385 sq. ft, excluded 621 sq. ft
GLA FLOOR 3: 1088 sq. ft, excluded 298 sq. ft
Total GLA 2073 sq. ft, total scanned area 3800 sq. ft

SIZES AND DIMENSIONS ARE APPROXIMATE, ACTUAL MAY VARY.



Disclaimer: Sizes and Dimensions are Approximate, Actual May Vary.



Tatyana Sturm
720-350-5909
tatyana@exitrealttydc.com
<https://thestorckteam.com>



Scan code
for more
property
details

