



Commercial



12000 SQFT

# 4450 Northwest 126th Avenue, Coral Springs, FL 33076 – All Floors



### Estimated areas

GLA FLOOR 1: 0 sq. ft, excluded 7406 sq. ft  
GLA FLOOR 2: 3935 sq. ft, excluded 2543 sq. ft  
Total GLA 3935 sq. ft, total scanned area 13884 sq. ft

SIZES AND DIMENSIONS ARE APPROXIMATE, ACTUAL MAY VARY.



Disclaimer: Sizes and Dimensions are Approximate, Actual May Vary.

Jill Silver  
202-355-8225  
Jill@floridatrendrealty.com



# 4450 Northwest 126th Avenue, Coral Springs, FL 33076 – 2nd Floor



### Estimated areas

GLA FLOOR 1: 0 sq. ft, excluded 7406 sq. ft  
GLA FLOOR 2: 3935 sq. ft, excluded 2543 sq. ft  
Total GLA 3935 sq. ft, total scanned area 13884 sq. ft

SIZES AND DIMENSIONS ARE APPROXIMATE, ACTUAL MAY VARY.

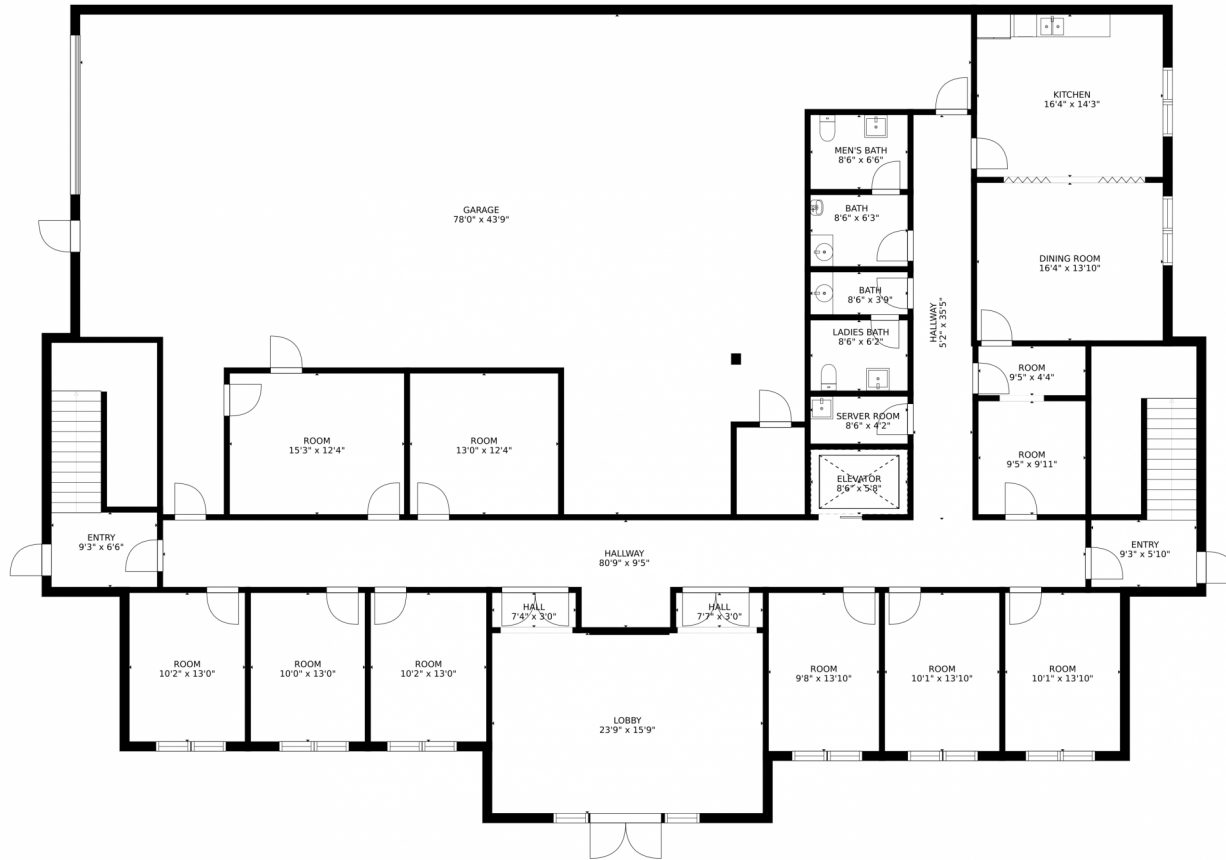


Disclaimer: Sizes and Dimensions are Approximate, Actual May Vary.

Jill Silver  
202-355-8225  
Jill@floridatrendrealty.com



# 4450 Northwest 126th Avenue, Coral Springs, FL 33076 – 1st Floor



### Estimated areas

GLA FLOOR 1: 0 sq. ft, excluded 7406 sq. ft  
GLA FLOOR 2: 3935 sq. ft, excluded 2543 sq. ft  
Total GLA 3935 sq. ft, total scanned area 13884 sq. ft

SIZES AND DIMENSIONS ARE APPROXIMATE, ACTUAL MAY VARY.



Disclaimer: Sizes and Dimensions are Approximate, Actual May Vary.

Jill Silver  
202-355-8225  
Jill@floridatrendrealty.com

