

6635 Stonehedge Drive
Colorado Springs, CO 80918
COMMUNITY: Greenbriar Park

MLS # 5638855



Single Family



3050 SQFT



5 Beds



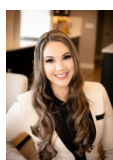
4/1 Baths



2 Car

PROPERTY DETAILS

Prepare to be impressed when you enter this superbly maintained and presented home set in the desired Greenbriar Park neighborhood. Constructed over two levels, this home enjoys a layout designed for easy living and entertaining. The ground floor incorporates a generously proportioned kitchen, two welcoming living rooms and dining room, guest powder room and laundry. The living room's fireplace provides comfort and warmth in the wintertime and the beautifully designed backyard is perfect for summer BBQ's with friends and family. Enjoy effortless maintenance with artificial turf that truly is a homeowner's dream. Upstairs, you will find four bedrooms and a family sized bathroom. The master bedroom suite with walk-in closet, ensuite bathroom and mountain views. The basement serves as a perfect sanctuary for visiting guests with a fifth bedroom and separate bathroom. Other highlights of the property include newly installed central air, water heater, and furnace as of June 2021. Extended patio in the front of the home, hardwood floors, and plentiful storage.



Samantha Maldonado

719-499-2157

MontlorSam@gmail.com

<https://montlorsam.findme.homes>

Scan code
for more
property
details



6635 Stonehedge Drive, Colorado Springs, CO 80918 – All Levels



Estimated areas

GLA FLOOR 1: 0 sq. ft. excluded 954 sq. ft.
 GLA FLOOR 2: 1033 sq. ft. excluded 1121 sq. ft.
 GLA FLOOR 3: 1133 sq. ft. excluded 231 sq. ft.
 Total GLA 2166 sq. ft. total scanned area 4472 sq. ft.

SIZES AND DIMENSIONS ARE APPROXIMATE, ACTUAL MAY VARY.



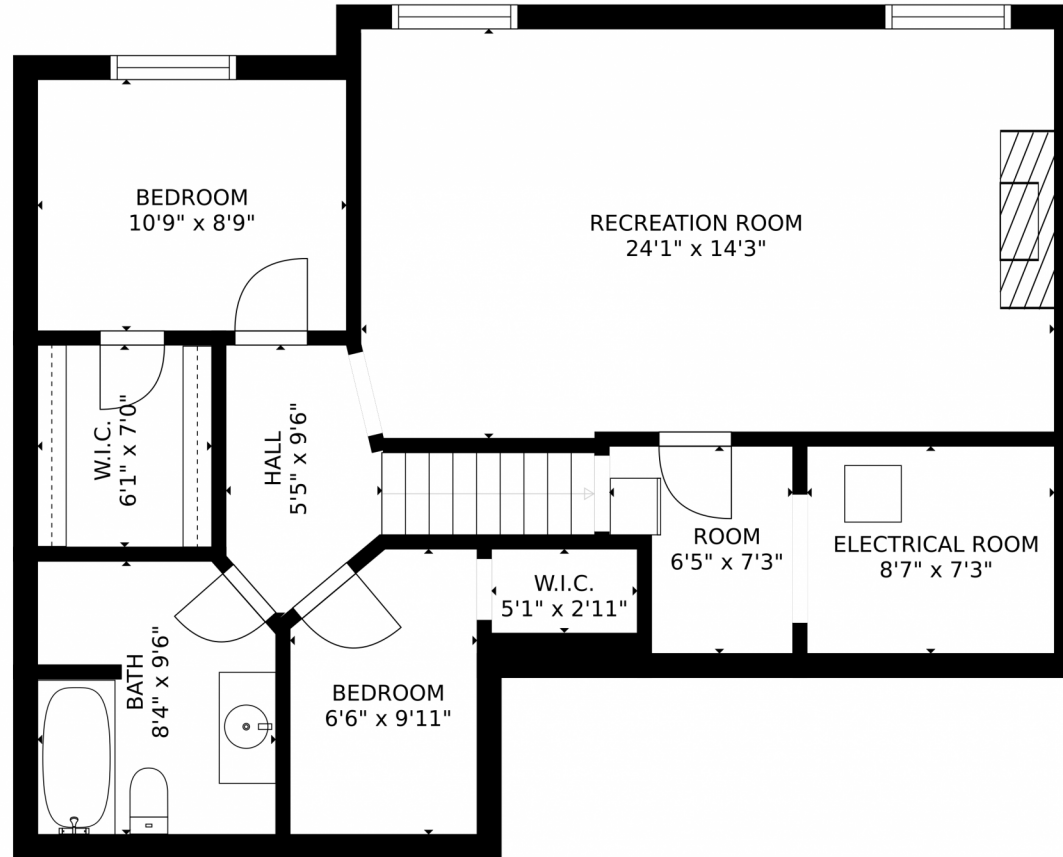
Disclaimer: Sizes and Dimensions are Approximate, Actual May Vary.



Samantha Maldonado
 719-499-2157
 MontlorSam@gmail.com
<https://montlorsam.findme.homes>



6635 Stonehedge Drive, Colorado Springs, CO 80918 – Lower Level



Estimated areas

GLA FLOOR 1: 0 sq. ft, excluded 954 sq. ft
GLA FLOOR 2: 1033 sq. ft, excluded 1121 sq. ft
GLA FLOOR 3: 1133 sq. ft, excluded 231 sq. ft
Total GLA 2166 sq. ft, total scanned area 4472 sq. ft

SIZES AND DIMENSIONS ARE APPROXIMATE, ACTUAL MAY VARY.



Disclaimer: Sizes and Dimensions are Approximate, Actual May Vary.



Samantha Maldonado

719-499-2157

MontlorSam@gmail.com

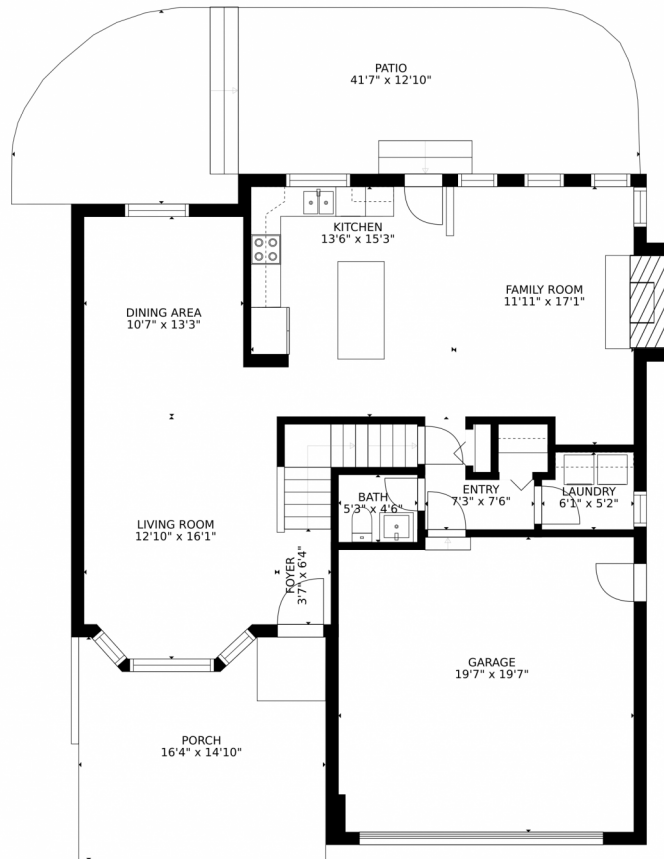
<https://montlorsam.findme.homes>



Scan code
for more
property
details



6635 Stonehedge Drive, Colorado Springs, CO 80918 – Main Level



Estimated areas

GLA FLOOR 1: 0 sq. ft, excluded 954 sq. ft
GLA FLOOR 2: 1033 sq. ft, excluded 1121 sq. ft
GLA FLOOR 3: 1133 sq. ft, excluded 231 sq. ft
Total GLA 2166 sq. ft, total scanned area 4472 sq. ft

SIZES AND DIMENSIONS ARE APPROXIMATE, ACTUAL MAY VARY.



Disclaimer: Sizes and Dimensions are Approximate, Actual May Vary.



Samantha Maldonado

719-499-2157

MontlorSam@gmail.com

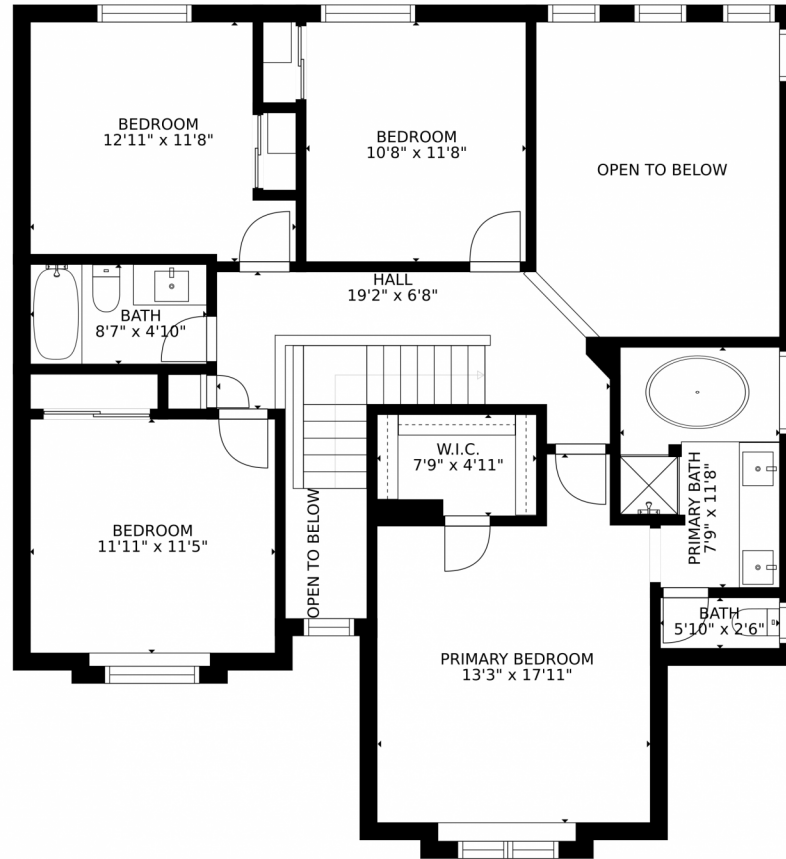
<https://montlorsam.findme.homes>



Scan code
for more
property
details



6635 Stonehedge Drive, Colorado Springs, CO 80918 – 2nd Level



Estimated areas

GLA FLOOR 1: 0 sq. ft., excluded 954 sq. ft.
GLA FLOOR 2: 1033 sq. ft., excluded 1321 sq. ft.
GLA FLOOR 3: 1133 sq. ft., excluded 231 sq. ft.
Total GLA 2166 sq. ft., total scanned area 4472 sq. ft.

SIZES AND DIMENSIONS ARE APPROXIMATE, ACTUAL MAY VARY.



Disclaimer: Sizes and Dimensions are Approximate, Actual May Vary.



Samantha Maldonado

719-499-2157

MontlorSam@gmail.com

<https://montlorsam.findme.homes>



Scan code
for more
property
details

