

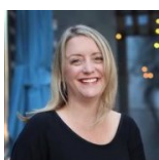
Evergreen Mountain Retreat



 Single Family
  2479 SQFT
  4 Beds
  2 Baths
  2 Car
  4.85 Acre

PROPERTY DETAILS

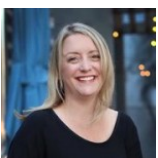
Ever dream of owning a mountain retreat on multiple acres? One that feels like your own oasis, but still has access to local amenities. Welcome home! The main level offers an open space concept between the kitchen, dining room, and family room. The kitchen includes granite counter tops, stainless steel appliances, an island with cabinets and seating, as well as a large pantry. The dining room features a unique river rock stone wall and views from every window. Warm up in the living room with the gas fireplace surrounded in river rock as well. The main floor includes two bedrooms, both with brand new carpet (installed in January 2022), a remodeled full bath, and laundry closet. The 2nd floor boasts a spacious owner's suite with his and her walk-in closets, a 5-piece ensuite bathroom with a jetted tub, and a private balcony. This home is minutes from Evergreen High School, Wilmot Elementary, Wulf Recreation Center and for the outdoor enthusiast trails that are within walking distance and/or a short drive to Alderfer/Three Sisters Park. Enjoy all that our amazing Colorado outdoors has to offer,



Jennifer Goslau
 303-489-4553
 jennifergoslau@madisonprops.com



all while being within 15-20 minutes of I70 or HWY 285 with easy access to Denver!



Jennifer Goslau
303-489-4553
jennifergoslau@madisonprops.com

