



4321 W Alaska Place
 Denver, CO 80219
 COMMUNITY: Westwood

MLS # 8125016
 PRICE \$500,000



Single Family 1628 SQFT 3 Beds 2 Baths 0.18 Acre

PROPERTY DETAILS

Your search is over, you've found "the one" in the phenomenally located Westwood community! This desirable and centrally located Denver abode is new, new, new from head to toe. Not only is the entire interior remodeled but this ranch-style beauty also boasts a brand new roof and full sewer line from the home all the way out to the main city line. A stunning and open main living area greets you upon arrival showcasing rich engineered hardwoods that carry you throughout the main living areas of the home along with all brand new interior gray on white trim paint finishes. The kitchen has also been fully remastered boasting abundant brilliant cabinetry which is perfectly paired with brand new stainless appliances, Quartz countertops, and modern subway tile accents open to the sunny and spacious formal dining area. Three generously sized bedrooms are found in a separated wing of the home all nearby one another for your peace of mind and security. You will also find two fully remastered bathrooms boasting new tile flooring and shower surrounds complete with custom penny tile pans along with all brand new toilets, vanities, fixtures, and lighting. You absolutely have to see this one in person, every inch has been fully updated and it absolutely won't last. Plenty of off-street parking is found in the extended driveway which is large enough to accommodate even RV parking as there is no HOA in this community. Arrive at the interstate via a straight shot down



Tatyana Sturm
 720-350-5909
 tatyana@exitrealtydtc.com
 https://thestorckteam.com



Alameda making your travels anywhere in the Denver Metro area a breeze including Downtown Denver within minutes or even the Denver Tech Center. Many large parks and city open spaces are also at your disposal including easy access to Garfield Lake Park along with Huston Lake Park and the massive Barnum Park offering a rec center, dog park, and bike park. Many, many, many local favorite eateries are also practically down the street including Bubba Chinos, Grandpa's Burger Haven, and the Columbine Steak House.



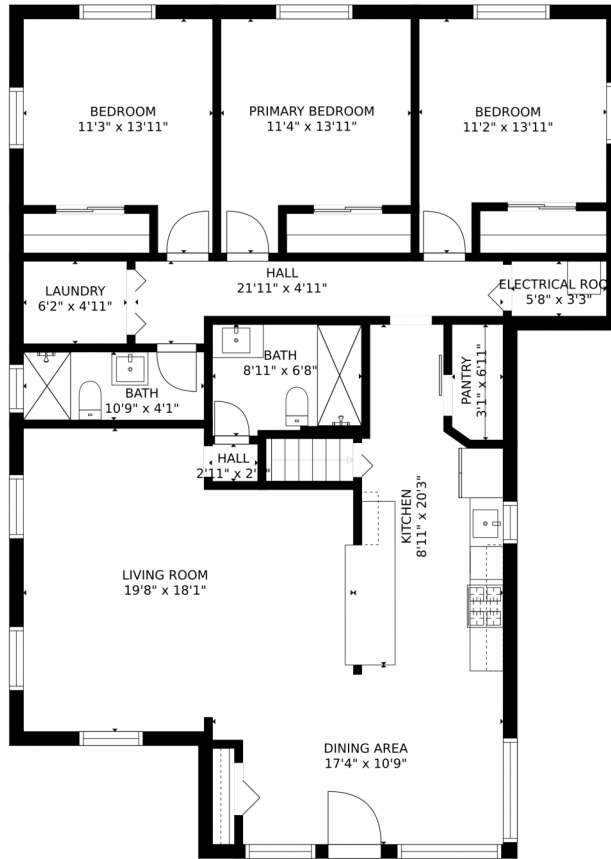
Tatyana Sturm
720-350-5909
tatyana@exitrealtydtc.com
<https://thestorckteam.com>



Scan code
for more
property
details



4321 W Alaska Place, Denver, CO 80219 – Main Level



Estimated areas

GLA FLOOR 1: 0 sq. ft, excluded 490 sq. ft
GLA FLOOR 2: 1554 sq. ft, excluded 27 sq. ft
Total GLA 1554 sq. ft, total scanned area 2071 sq. ft

SIZES AND DIMENSIONS ARE APPROXIMATE, ACTUAL MAY VARY.



Disclaimer: Sizes and Dimensions are Approximate, Actual May Vary.



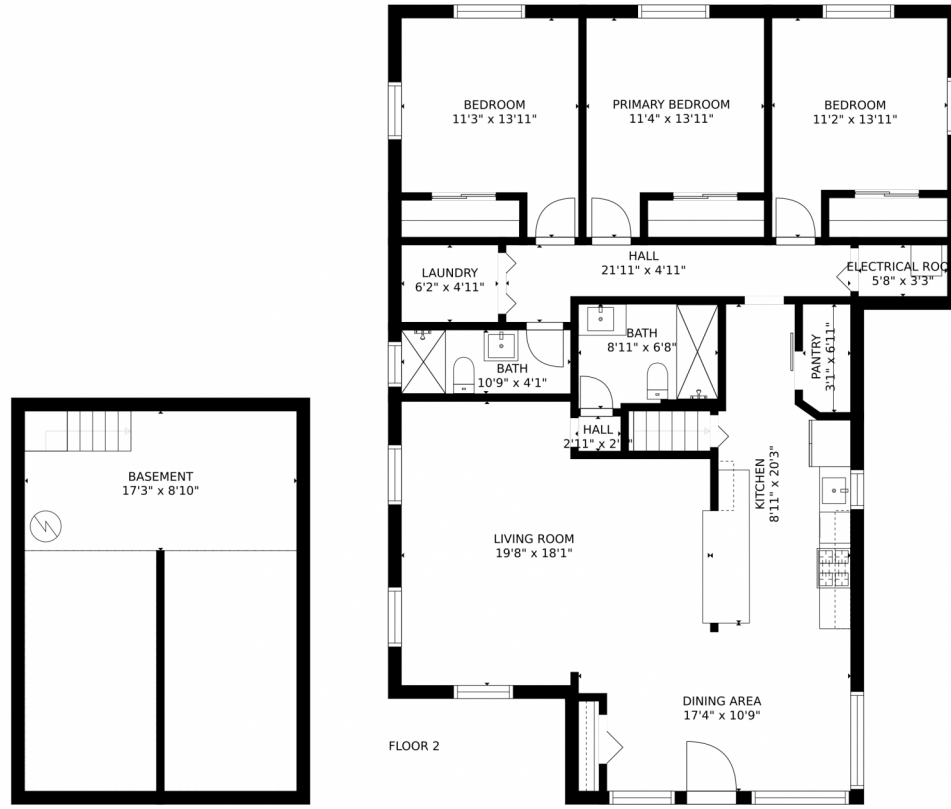
Tatyana Sturm
720-350-5909
tatyana@exitrealtydtc.com
<https://thestorckteam.com>



Scan code
for more
property
details



4321 W Alaska Place, Denver, CO 80219 – All Levels



FLOOR 1

Estimated areas

GLA FLOOR 1: 0 sq. ft, excluded 490 sq. ft
GLA FLOOR 2: 1554 sq. ft, excluded 27 sq. ft
Total GLA 1554 sq. ft, total scanned area 2071 sq. ft

SIZES AND DIMENSIONS ARE APPROXIMATE, ACTUAL MAY VARY.



Disclaimer: Sizes and Dimensions are Approximate, Actual May Vary.

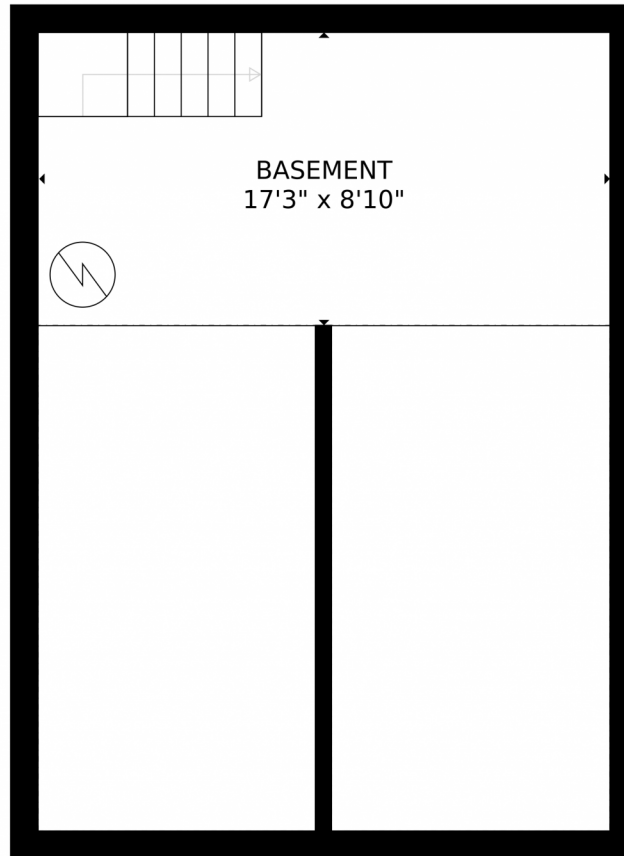


Tatyana Sturm
720-350-5909
tatyana@exitrealtydtc.com
<https://thestorckteam.com>



Scan code
for more
property
details





Estimated areas

GLA FLOOR 1: 0 sq. ft, excluded 490 sq. ft
GLA FLOOR 2: 1554 sq. ft, excluded 27 sq. ft
Total GLA 1554 sq. ft, total scanned area 2071 sq. ft

SIZES AND DIMENSIONS ARE APPROXIMATE, ACTUAL MAY VARY.



Disclaimer: Sizes and Dimensions are Approximate, Actual May Vary.



Tatyana Sturm
720-350-5909
tatyana@exitrealtydtc.com
<https://thestorckteam.com>



Scan code
for more
property
details

