



Single Family



3250 SQFT



4 Beds



2/1 Baths



2 Car



0.15 Acre

PROPERTY DETAILS

Enter into a welcoming two story, vaulted ceiling, living room with large windows that brighten the area. Blinds on all window are all custom & most are motorized (value \$25,000!) The open floor plan moves into a spacious dining room separate from the kitchen. Enjoy pristine laminate wood flooring throughout the main level. Large, open eat-in kitchen will give space to entertain while guests hang out in the family room. Thoughtful custom barn doors for hiding storage cubbies & a cozy fireplace will make this your favorite room. You'll find this home has fun and updated lighting all throughout. Moving upstairs there are three bedrooms plus a loft. The spacious primary bedroom boasts a five piece bath with a large walk-in closet. The custom barn doors ad privacy and a centerpiece to the room. The secondary bedrooms are spacious & one has a walk in closet. The loft is large & provides ample opportunity for an additional hangout. The basement is filled with more fun built-ins for storage or decor. the stairs fall directly into a bonus room currently used as a homeschool/office. The additional 4th bedroom is conforming with egress and a HUGE walk-in closet. Access to the crawl space is through a large "pantry" off both basement rooms - large enough for 2 freezers (excluded) This house is filled with natural light and fresh paint. Backyard has an amazing paver patio with pergola. It's perfect for entertaining, grilling or just relaxing. Don't miss the 2 story playhouse as



Gwen Hamm

720-530-5489

gwenhamm@kw.com

<https://gwenhamm.kw.com/>

Scan code
 for more
 property
 details



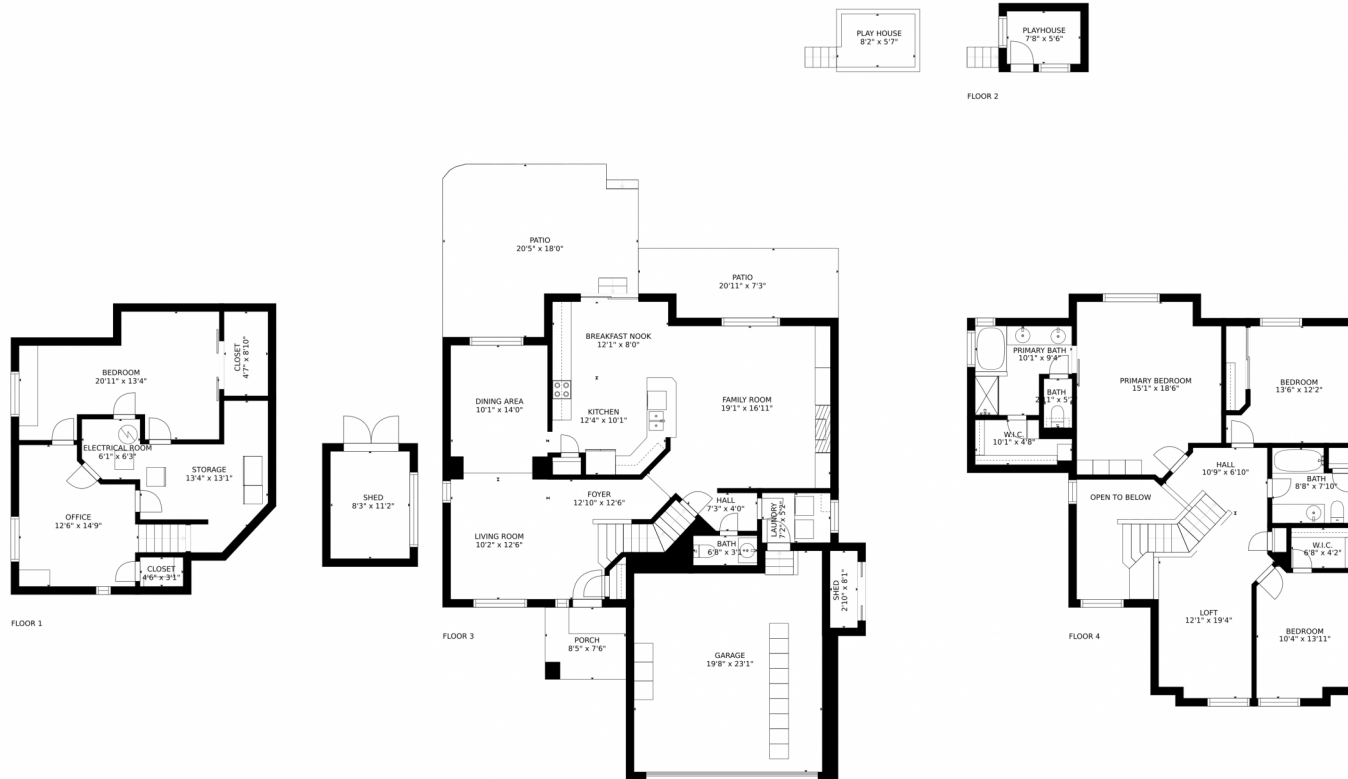
well. This truly is a gem of a house & will not last long.



Gwen Hamm
720-530-5489
gwenhamm@kw.com
<https://gwenhamm.kw.com/>



144 High Plains Street, Castle Rock, CO 80104 – All Levels



Estimated areas

GLA FLOOR 1: 0 sq. ft., excluded 758 sq. ft.
 GLA FLOOR 2: 67 sq. ft., excluded 0 sq. ft.
 GLA FLOOR 3: 1167 sq. ft., excluded 1213 sq. ft.
 GLA FLOOR 4: 1243 sq. ft., excluded 113 sq. ft.
 Total GLA 2477 sq. ft., total scanned area 4559 sq. ft.

SIZES AND DIMENSIONS ARE APPROXIMATE, ACTUAL MAY VARY.



Disclaimer: Sizes and Dimensions are Approximate, Actual May Vary.



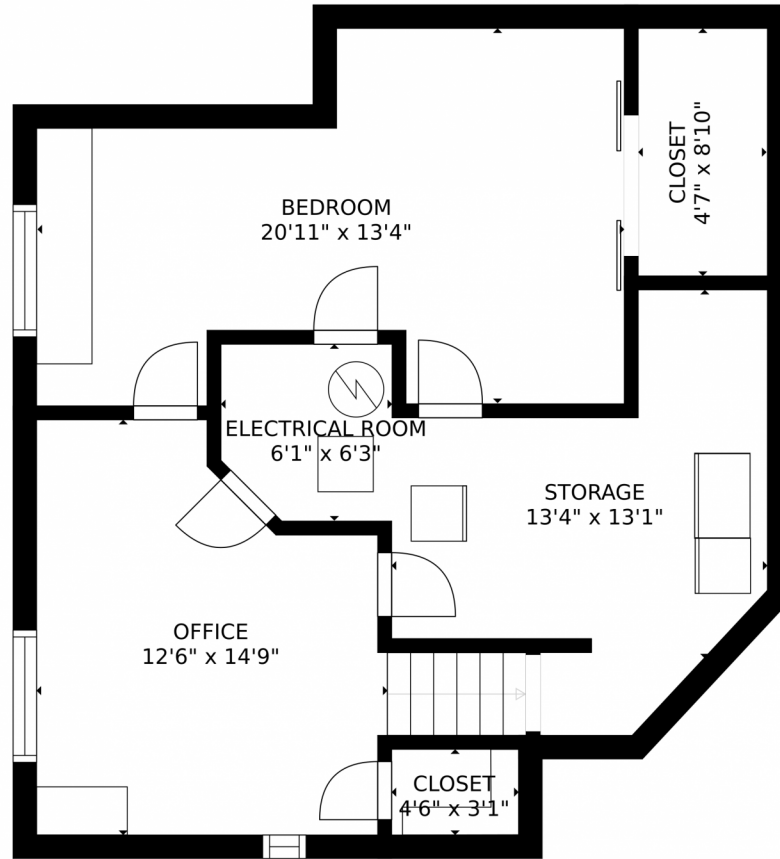
Gwen Hamm
 720-530-5489
 gwenhamm@kw.com
<https://gwenhamm.kw.com/>



Scan code
 for more
 property
 details



144 High Plains Street, Castle Rock, CO 80104 – Lower Level



Estimated areas

GLA FLOOR 1: 0 sq. ft., excluded 758 sq. ft.
GLA FLOOR 2: 67 sq. ft., excluded 0 sq. ft.
GLA FLOOR 3: 1187 sq. ft., excluded 1213 sq. ft.
GLA FLOOR 4: 1243 sq. ft., excluded 113 sq. ft.
Total GLA 2477 sq. ft., total scanned area 4559 sq. ft.

SIZES AND DIMENSIONS ARE APPROXIMATE, ACTUAL MAY VARY.

Disclaimer: Sizes and Dimensions are Approximate, Actual May Vary.

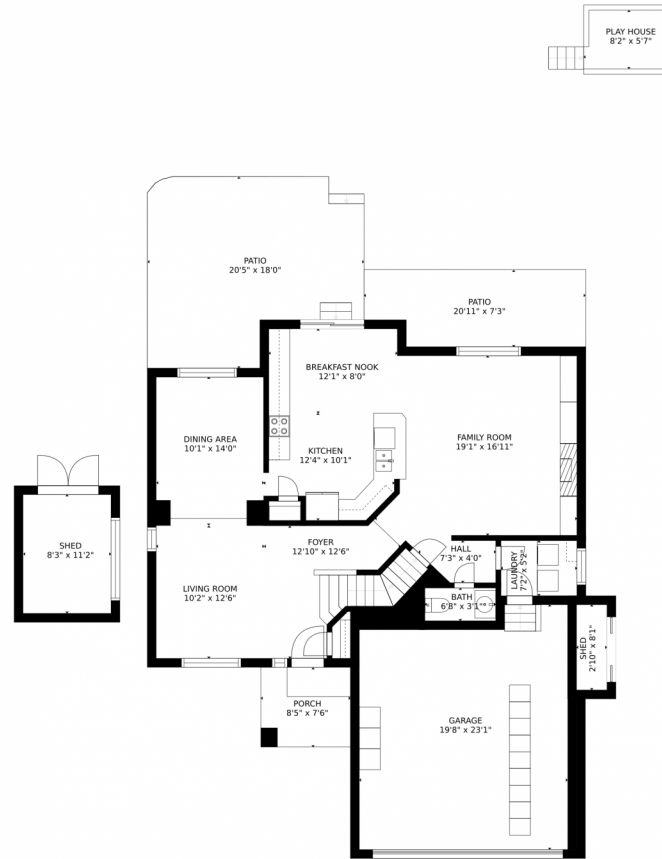


Gwen Hamm
720-530-5489
gwenhamm@kw.com
<https://gwenhamm.kw.com/>



Scan code
for more
property
details

144 High Plains Street, Castle Rock, CO 80104 – Main Level



Estimated areas

GLA FLOOR 1: 0 sq. ft., excluded 758 sq. ft.
GLA FLOOR 2: 67 sq. ft., excluded 0 sq. ft.
GLA FLOOR 3: 1167 sq. ft., excluded 1213 sq. ft.
GLA FLOOR 4: 1249 sq. ft., excluded 113 sq. ft.
Total GLA 2477 sq. ft., total scanned area 4559 sq. ft.

SIZES AND DIMENSIONS ARE APPROXIMATE, ACTUAL MAY VARY.



Disclaimer: Sizes and Dimensions are Approximate, Actual May Vary.



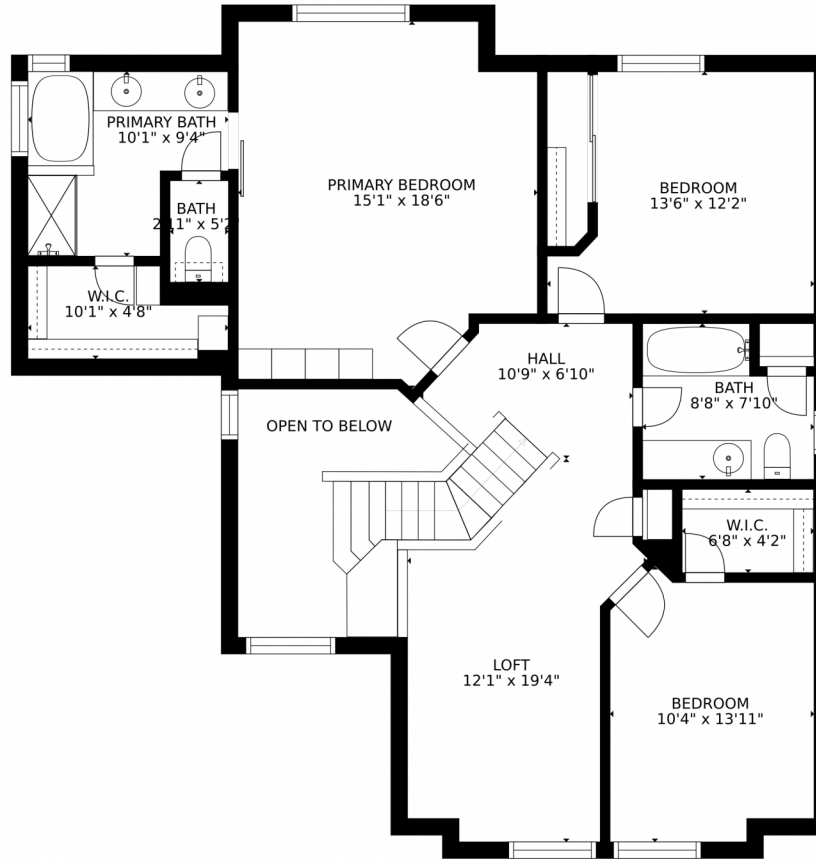
Gwen Hamm
720-530-5489
gwenhamm@kw.com
<https://gwenhamm.kw.com/>



Scan code
for more
property
details



144 High Plains Street, Castle Rock, CO 80104 – 2nd Level



Estimated areas

GLA FLOOR 1: 0 sq. ft., excluded 758 sq. ft.
GLA FLOOR 2: 67 sq. ft., excluded 0 sq. ft.
GLA FLOOR 3: 1187 sq. ft., excluded 1213 sq. ft.
GLA FLOOR 4: 1243 sq. ft., excluded 113 sq. ft.
Total GLA 2477 sq. ft., total scanned area 4559 sq. ft.

SIZES AND DIMENSIONS ARE APPROXIMATE, ACTUAL MAY VARY.



Disclaimer: Sizes and Dimensions are Approximate, Actual May Vary.



Gwen Hamm
720-530-5489
gwenhamm@kw.com
<https://gwenhamm.kw.com/>



Scan code
for more
property
details

