


 Single Family
  5562 SQFT
  4 Beds
  3/1 Baths
  3 Car
  0.27 Acre

PROPERTY DETAILS

This home has it all. 2story ceilings with light cascading in great you for a bright & welcoming entry & living room. The dining is just behind also sharing the brightness with a bay window for extra space & beautiful tray ceilings. Through a swinging door to the kitchen, the kitchen boasts granite counters, a large 5x5' island with beautiful cabinetry, double ovens, gas cooktop & so much counterspace. Eat in the breakfast nook or at the bar that separates the family room & the kitchen. Lounge in the family room in front of the wall of windows watching the animals frolic in the open space behind the home while warming in front of the gas fireplace that happens to be shared by the office as an added bonus. The office has lots of windows, double doors & the aforementioned gas fireplace. The large laundry/mudroom has matching cabinetry to the kitchen & lots of storage. The primary bedroom KEY WORD is LARGE. The room itself is ENORMOUS & so much space you can have a sitting area near the 2nd gas fireplace. The primary bathroom has a LARGE soaking tub, walk in shower, separate toilet room, double sinks with LOTS of counter space as well & don't miss the wrap around closet - behind the mirror. Two of the secondary bedrooms are adjoined with a "Jack n Jill" bathroom. The 3rd secondary bedroom shares the full bath in the hallway. This large house has such well utilized space already and if you so choose, there is still an unfinished DAYLIGHT/GARDEN level basement to finish.



Gwen Hamm
 720-530-5489
 gwenhamm@kw.com
<https://gwenhamm.kw.com/>



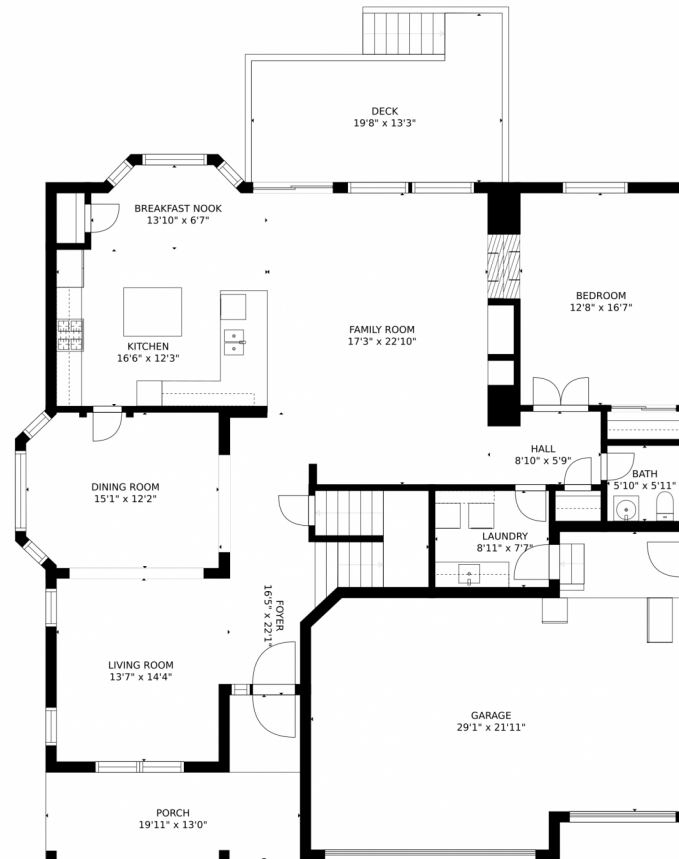
Windows galore, lots of light & great ceiling heights. The yard is ENOURMOUS as well & backs to open space! Grab your wood & enjoy the cool summer evenings with the custom built firepit or enjoy the views from the deck off the family room. This home has it all! Space INSIDE & OUT! It's a must see!



Gwen Hamm
720-530-5489
gwenhamm@kw.com
<https://gwenhamm.kw.com/>



855 Kryptonite Drive, Castle Rock, CO 80108 – Main Level



Estimated areas

GLA FLOOR 1: 0 sq. ft., excluded 1864 sq. ft.
GLA FLOOR 2: 1873 sq. ft., excluded 1021 sq. ft.
GLA FLOOR 3: 2010 sq. ft., excluded 301 sq. ft.
Total GLA 3883 sq. ft., total scanned area 7069 sq. ft.

SIZES AND DIMENSIONS ARE APPROXIMATE, ACTUAL MAY VARY.



Disclaimer: Sizes and Dimensions are Approximate, Actual May Vary.



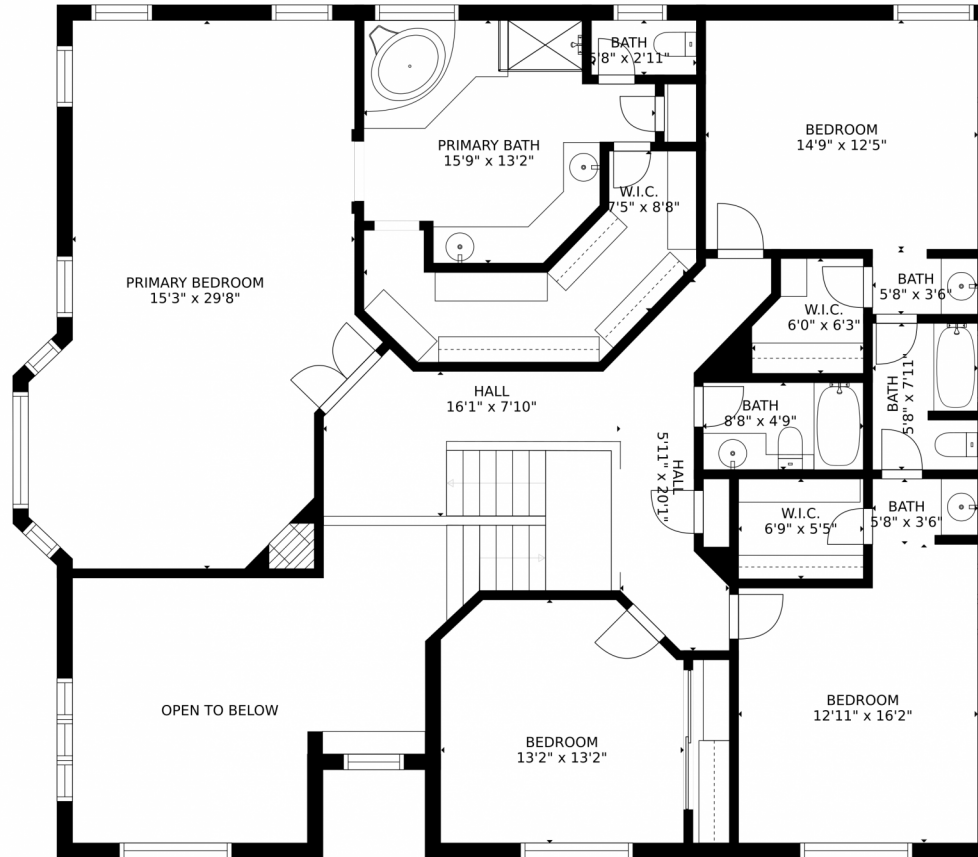
Gwen Hamm
720-530-5489
gwenhamm@kw.com
<https://gwenhamm.kw.com/>



Scan code
for more
property
details



855 Kryptonite Drive, Castle Rock, CO 80108 – Upper Level



Estimated areas

GLA FLOOR 1: 0 sq. ft., excluded 1864 sq. ft.
GLA FLOOR 2: 1873 sq. ft., excluded 1021 sq. ft.
GLA FLOOR 3: 2010 sq. ft., excluded 301 sq. ft.
Total GLA 3883 sq. ft., total scanned area 7069 sq. ft.

SIZES AND DIMENSIONS ARE APPROXIMATE, ACTUAL MAY VARY.



Disclaimer: Sizes and Dimensions are Approximate, Actual May Vary.



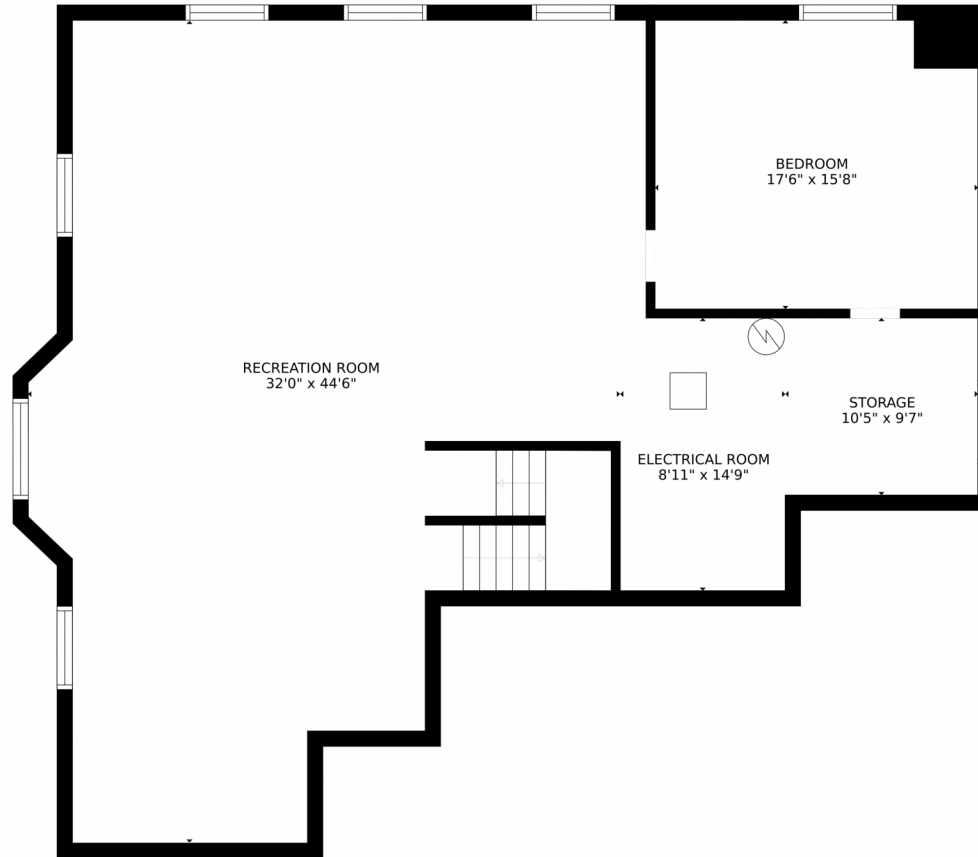
Gwen Hamm
720-530-5489
gwenhamm@kw.com
<https://gwenhamm.kw.com/>



Scan code
for more
property
details



855 Kryptonite Drive, Castle Rock, CO 80108 – Lower Level



Estimated areas

GLA FLOOR 1: 0 sq. ft., excluded 1864 sq. ft.
GLA FLOOR 2: 1873 sq. ft., excluded 1021 sq. ft.
GLA FLOOR 3: 2010 sq. ft., excluded 301 sq. ft.
Total GLA 3883 sq. ft., total scanned area 7069 sq. ft.

SIZES AND DIMENSIONS ARE APPROXIMATE, ACTUAL MAY VARY.



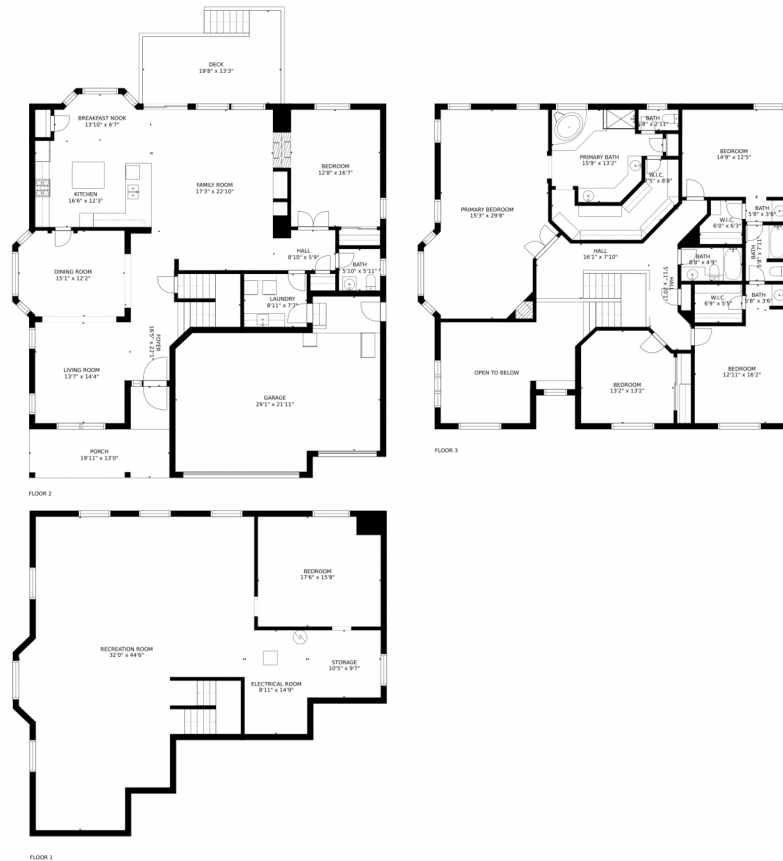
Disclaimer: Sizes and Dimensions are Approximate, Actual May Vary.



Gwen Hamm
720-530-5489
gwenhamm@kw.com
<https://gwenhamm.kw.com/>



855 Kryptonite Drive, Castle Rock, CO 80108 – All Levels



Estimated areas

GLA FLOOR 1: 0 sq. ft., excluded 1864 sq. ft.
GLA FLOOR 2: 1873 sq. ft., excluded 1021 sq. ft.
GLA FLOOR 3: 2010 sq. ft., excluded 301 sq. ft.
Total GLA 3883 sq. ft., total scanned area 7069 sq. ft.

SIZES AND DIMENSIONS ARE APPROXIMATE, ACTUAL MAY VARY.



Disclaimer: Sizes and Dimensions are Approximate, Actual May Vary.



Gwen Hamm
720-530-5489
gwenhamm@kw.com
<https://gwenhamm.kw.com/>



Scan code
for more
property
details

