




 Multi Family  
  2823 SQFT  
  3 Beds  
  3/1 Baths  
  2 Car  
  0.05 Acre

## PROPERTY DETAILS

This beautiful contemporary residence features three bedrooms, four baths in Cherry Creek is full of style and luxury, open floor plan that boasts a fresh, neutral palette with refinished hardwood flooring, living and dining spaces create a fantastic flow with endless opportunities to entertain. Large remodeled designer kitchen open on both sides to brilliantly capture an abundance of natural light and showcase an entire floor devoted to entertaining with a private backyard and 2 car detached garage. Upstairs continues with a primary master featuring a 5 piece bathroom, 2nd bedroom ensuite and laundry room which complete this floor. Finished basement includes another guest bedroom suite with walk in shower, large living/rec/bonus room and amazing wet bar. This beautiful townhome sits within convenient walking distance to an array of eateries and shops all just a short walk from everything Cherry Creek has to offer! Great location with highly coveted Steck Elementary. Newer furnace with humidifier, air conditioner, hot water heater and roof. Keurig coffee maker inside of fridge many extras throughout the home. This home has been updated throughout.



**Tonie Benetti**  
303-210-7336  
tonie@tbkrealstate.com  
<https://www.tbkrealstate.com>



# 180 S Garfield Street, Denver, CO 80209 – Main Level



### Estimated areas

GLA FLOOR 1: 0 sq. ft, excluded 965 sq. ft.  
GLA FLOOR 2: 367 sq. ft, excluded 837 sq. ft.  
GLA FLOOR 3: 1024 sq. ft, excluded 0 sq. ft.  
Total GLA 1991 sq. ft, total scanned area 3793 sq. ft.

SIZES AND DIMENSIONS ARE APPROXIMATE, ACTUAL MAY VARY.



Disclaimer: Sizes and Dimensions are Approximate, Actual May Vary.



**Tonie Benetti**  
303-210-7336  
tonie@tbkrealstate.com  
<https://www.tbkrealstate.com>

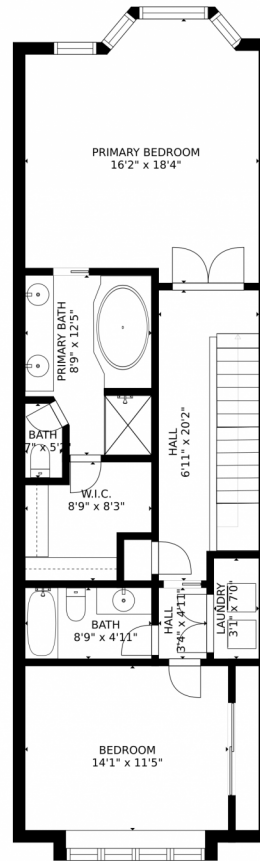


Scan code  
for more  
property  
details





# 180 S Garfield Street, Denver, CO 80209 – Upper Level



### Estimated areas

GLA FLOOR 1: 0 sq. ft, excluded 965 sq. ft  
GLA FLOOR 2: 967 sq. ft, excluded 837 sq. ft  
GLA FLOOR 3: 1024 sq. ft, excluded 0 sq. ft  
Total GLA 1991 sq. ft, total scanned area 3793 sq. ft

SIZES AND DIMENSIONS ARE APPROXIMATE, ACTUAL MAY VARY.



Disclaimer: Sizes and Dimensions are Approximate, Actual May Vary.



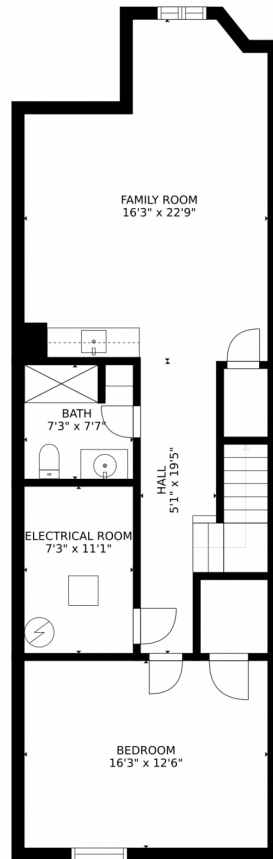
**Tonie Benetti**  
303-210-7336  
tonie@tbkrealstate.com  
<https://www.tbkrealstate.com>



Scan code  
for more  
property  
details



180 S Garfield Street, Denver, CO 80209 – Lower Level



Estimated areas

GLA FLOOR 1: 0 sq. ft, excluded 965 sq. ft.  
GLA FLOOR 2: 967 sq. ft, excluded 837 sq. ft.  
GLA FLOOR 3: 1024 sq. ft, excluded 0 sq. ft.  
Total GLA 1991 sq. ft, total scanned area 3793 sq. ft.

SIZES AND DIMENSIONS ARE APPROXIMATE, ACTUAL MAY VARY.



Disclaimer: Sizes and Dimensions are Approximate, Actual May Vary.



**Tonie Benetti**  
303-210-7336  
tonie@tbkrealstate.com  
<https://www.tbkrealstate.com>



Scan code  
for more  
property  
details



