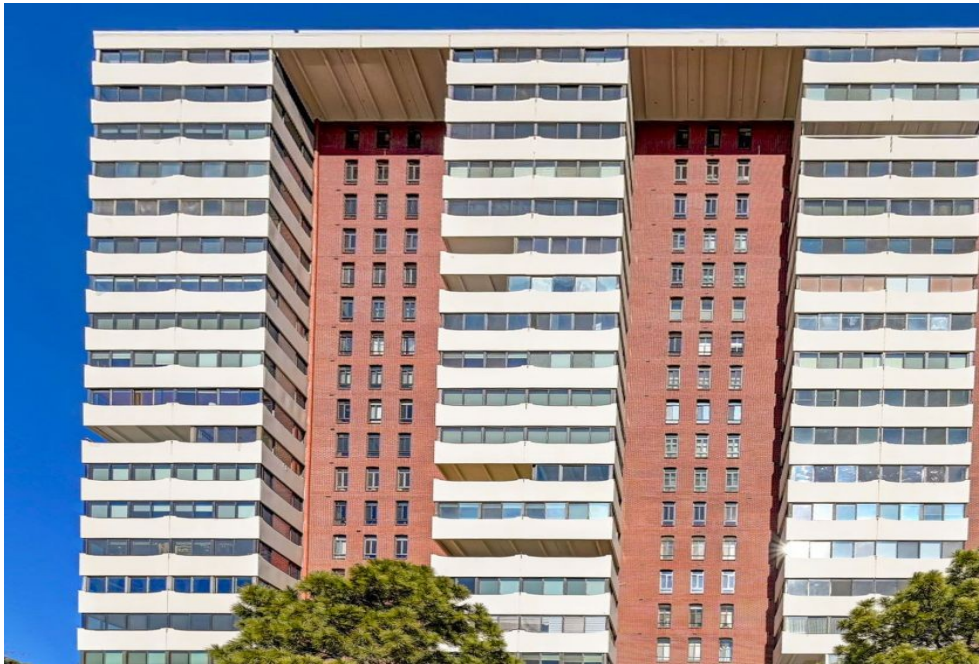


3131 East Alameda Avenue
Denver, CO 80209
COMMUNITY: Polo Club

MLS # 6455139
PRICE \$1,395,000



 Condominium  2976 SQFT  3 Beds  3 Baths  2 Car

PROPERTY DETAILS

Two story, 3 bedroom designer unit remodeled with high quality materials and finishes featuring magnificent city and mountain views with spectacular sunsets. Cross the picturesque bridge and stroll down the river walk and within minutes you will be in the heart of the Cherry Creek shopping and fine dining district. Neighborhood and nature in a dream location for walkers and bikers. Parking will not be a problem for those who like to entertain. The Polo Club Condos is one of Denver's most unique condo buildings, featuring a 20 story skylit atrium. There are too many improvements and custom built-ins to mention in the listing but here are just a few of things you can expect: Hardwood and marble mosaic floors, custom built-in pantry with sterling silver storage, two of the bathrooms are designed in the European fully tiled wet-bath style, all new custom LED lighting throughout the entire unit, custom drapes on enclosed balconies, Miele washer/dryer in the unit, deep galley style kitchen sink, Jenn-Air appliances including an induction stove and steam oven, 3 lit medicine cabinets, built in office with file drawers and storage, central air, new, up to code windows in heated balconies, custom built ins that are not only functional but will surprise and delight. Please refer to the improvement list in the photo section. The building features a fully landscaped 2 acre park above the parking garage with a putting green, game court, and meditation garden as well as a BBQ gazebo and



Dennis Molitor
303-916-9137
denver324@gmail.com



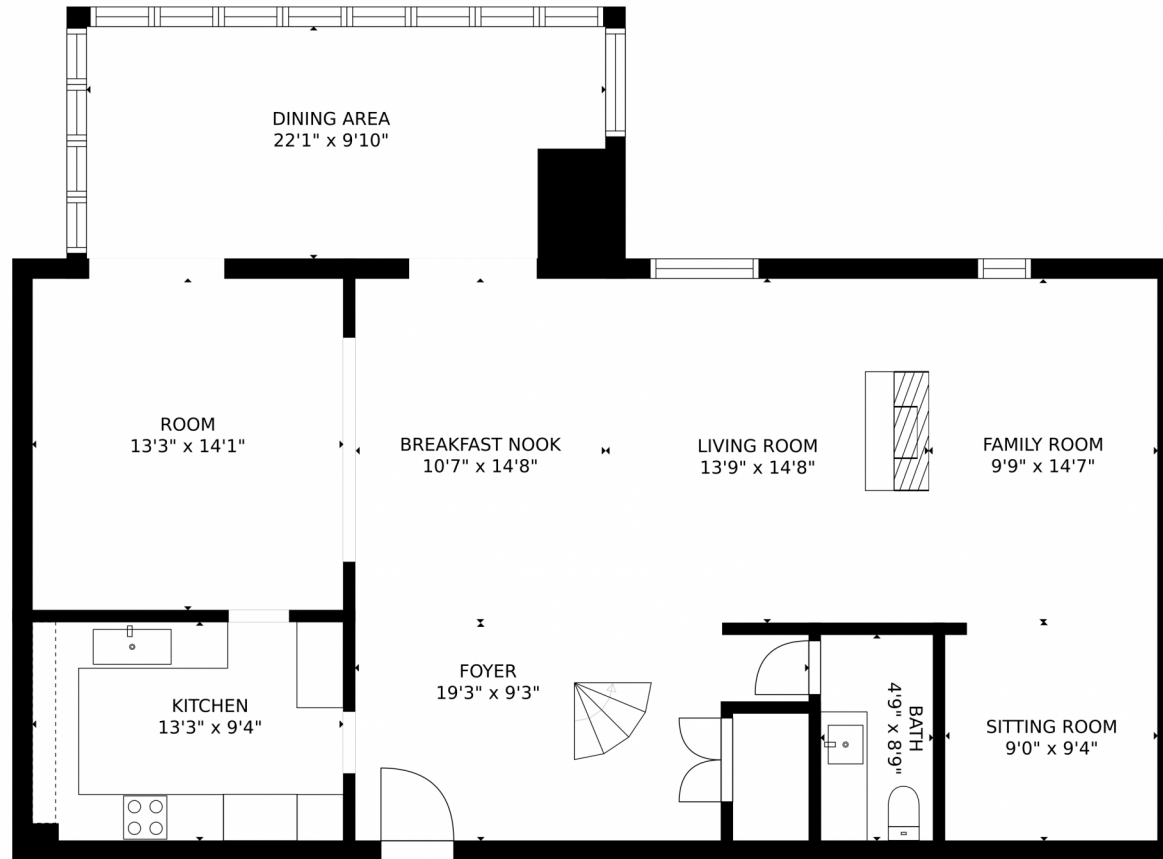
Scan code
for more
property
details

large entertaining deck. Beautiful bright indoor pool, another sunning deck, fitness Ctr, saunas, two party rooms, a library and conference room. On site 24 hour security, management and cleaning crew. Major improvements and renovations are being planed for all the common areas. The entire exterior painting should be completed this spring. This unit comes with two garage parking spaces.



Dennis Molitor
303-916-9137
denver324@gmail.com





Estimated areas

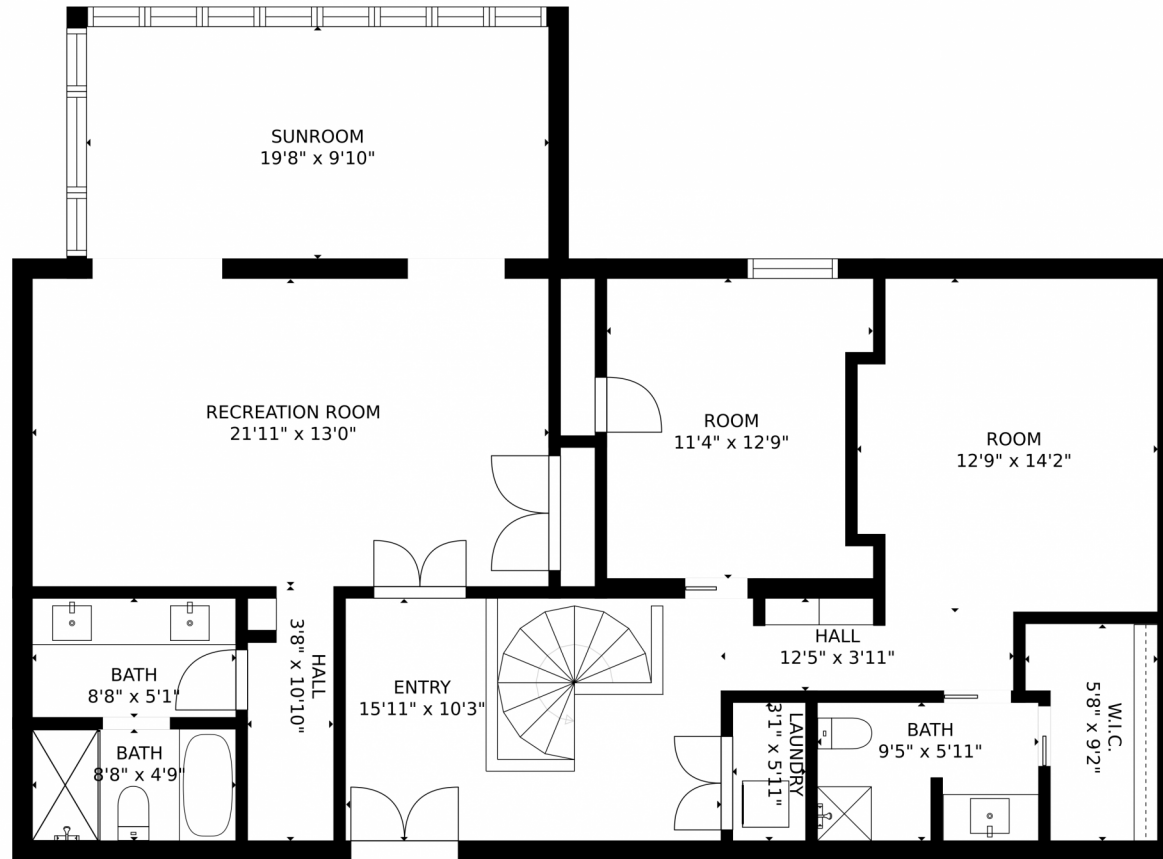
GLA FLOOR 1: 0 sq. ft, excluded 1517 sq. ft
GLA FLOOR 2: 1491 sq. ft, excluded 0 sq. ft
Total GLA 1491 sq. ft, total scanned area 3008 sq. ft

SIZES AND DIMENSIONS ARE APPROXIMATE, ACTUAL MAY VARY.



Disclaimer: Sizes and Dimensions are Approximate, Actual May Vary.

3131 East Alameda Avenue, Denver, CO 80209 – Second Level



Estimated areas

GLA FLOOR 1: 0 sq. ft, excluded 1517 sq. ft
GLA FLOOR 2: 1491 sq. ft, excluded 0 sq. ft
Total GLA 1491 sq. ft, total scanned area 3008 sq. ft

SIZES AND DIMENSIONS ARE APPROXIMATE, ACTUAL MAY VARY.



Disclaimer: Sizes and Dimensions are Approximate, Actual May Vary.

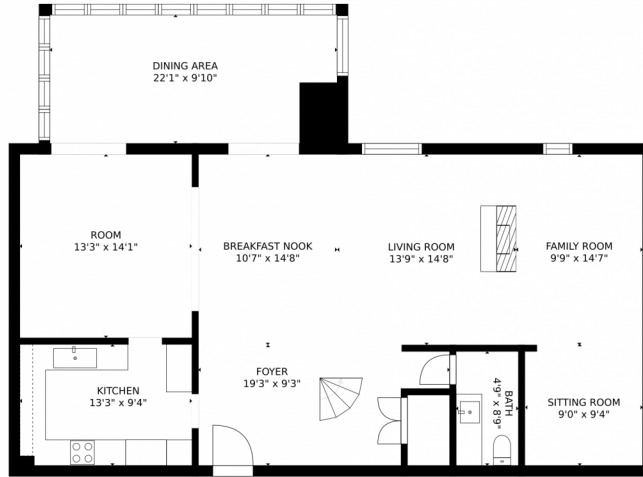
Dennis Molitor
303-916-9137
denver324@gmail.com



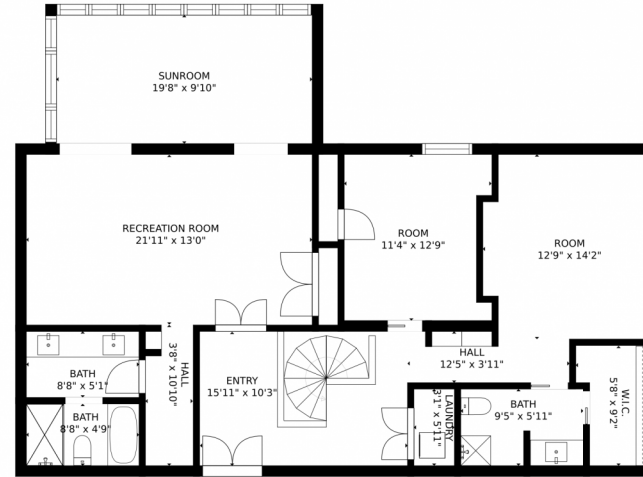
Scan code
for more
property
details



3131 East Alameda Avenue, Denver, CO 80209 – All Levels



FLOOR 1



FLOOR 2

Estimated areas

GLA FLOOR 1: 0 sq. ft, excluded 1517 sq. ft
GLA FLOOR 2: 1491 sq. ft, excluded 0 sq. ft
Total GLA 1491 sq. ft, total scanned area 3008 sq. ft

SIZES AND DIMENSIONS ARE APPROXIMATE, ACTUAL MAY VARY.



Disclaimer: Sizes and Dimensions are Approximate, Actual May Vary.

Dennis Molitor
303-916-9137
denver324@gmail.com



Scan code
for more
property
details

