

8727 Holman Circle  
Arvada, CO 80005  
COMMUNITY: Whisper Creek

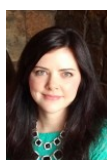
MLS # 4526604  
PRICE \$919,900



 Single Family  3445 SQFT  4 Beds  3 Baths  3 Car

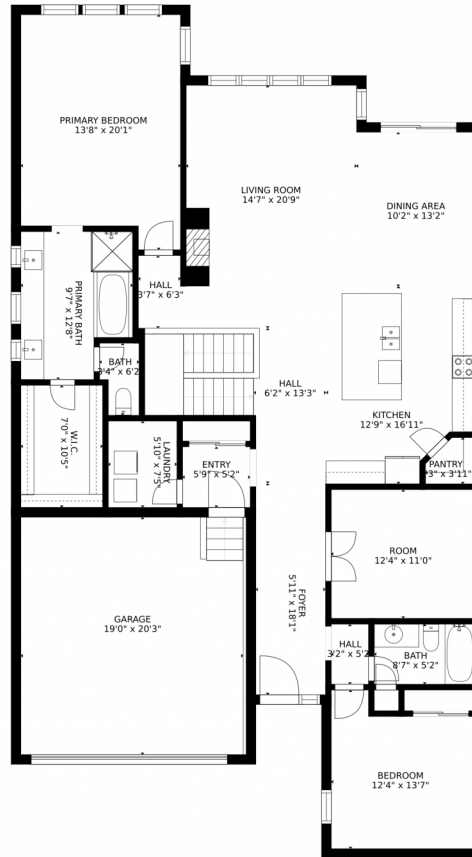
## PROPERTY DETAILS

Gorgeous patio ranch home with custom luxury upgrades! As soon as you come in you will fall in love with this beauty! The upgrades are all throughout the home featuring 10-12 feet ceilings, vaulted ceiling in the master suite, solid oak floors, upgraded carpet and pad, extra electrical upgrades, floor to ceiling tile gas fireplace with mantel, open stair railings and chandeliers. The open floor plan is perfect for entertaining, featuring gorgeous kitchen huge granite center island measuring 5'11"X9'10", stainless steel upgraded appliances, double oven, concrete sink and a walk in pantry. The master suite is pure luxury with vaulted ceiling, seating area, chandelier, jetted tub, custom tile shower, granite countertops, undermount sinks, extra lighting and a very large walk in closet. Walk out to the back covered patio 11'11"X11'5" and enjoy it year round. Finished basement is done with every detail thought thru, great room is open to the game room and a wet bar with refrigerator, granite countertop, disposal, beautiful cabinets and two spacious bedrooms. Full bath is absolutely stunning with jetted tub, sconces, tile and double doors for easy access from the bedroom. The 3 car garage is plenty for cars and some storage with 9 feet tall garage door. This home shows beautifully and is full of character and charm! You will be very impressed with the condition and comfort of this home!



**Natalie Kovalenko** Golden Key Real Estate  
720-560-3169  
smehome@yahoo.com





Estimated areas

GLA FLOOR 1: 0 sq. ft, excluded 1248 sq. ft  
GLA FLOOR 2: 2089 sq. ft, excluded 429 sq. ft  
Total GLA 2089 sq. ft, total scanned area 3766 sq. ft

SIZES AND DIMENSIONS ARE APPROXIMATE, ACTUAL MAY VARY.



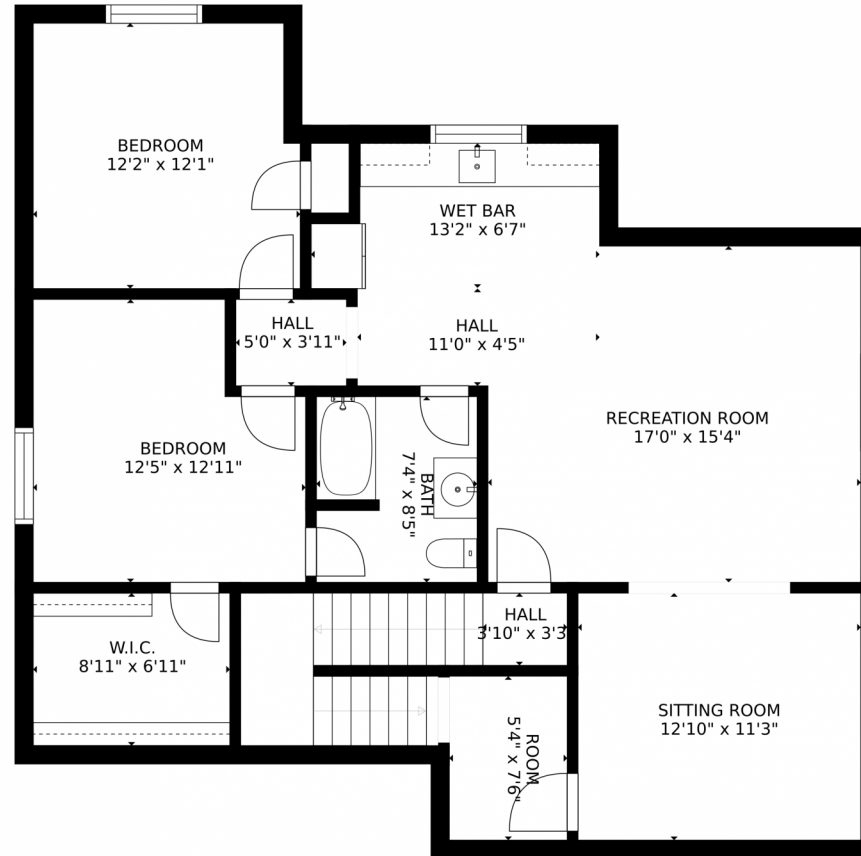
Disclaimer: Sizes and Dimensions are Approximate, Actual May Vary.



Natalie Kovalenko Golden Key Real Estate  
720-560-3169  
smehome@yahoo.com



8727 Holman Circle, Arvada, CO 80005 – Basement



Estimated areas

GLA FLOOR 1: 0 sq. ft, excluded 1248 sq. ft  
GLA FLOOR 2: 2089 sq. ft, excluded 429 sq. ft  
Total GLA 2089 sq. ft, total scanned area 3766 sq. ft

SIZES AND DIMENSIONS ARE APPROXIMATE, ACTUAL MAY VARY.



Disclaimer: Sizes and Dimensions are Approximate, Actual May Vary.



Natalie Kovalenko Golden Key Real Estate  
720-560-3169  
smehome@yahoo.com



# 8727 Holman Circle, Arvada, CO 80005 – All Levels



### Estimated areas

GLA FLOOR 1: 0 sq. ft, excluded 1248 sq. ft  
GLA FLOOR 2: 2089 sq. ft, excluded 429 sq. ft  
Total GLA 2089 sq. ft, total scanned area 3766 sq. ft

SIZES AND DIMENSIONS ARE APPROXIMATE, ACTUAL MAY VARY.



Disclaimer: Sizes and Dimensions are Approximate, Actual May Vary.



Natalie Kovalenko Golden Key Real Estate  
720-560-3169  
smehome@yahoo.com



Scan code  
for more  
property  
details

