



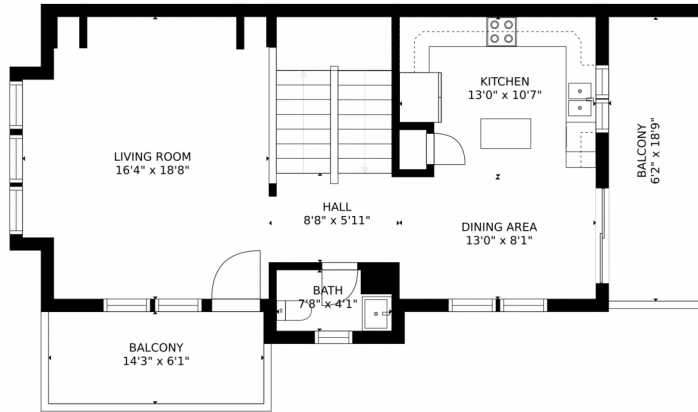
 Townhouse  1806 SQFT



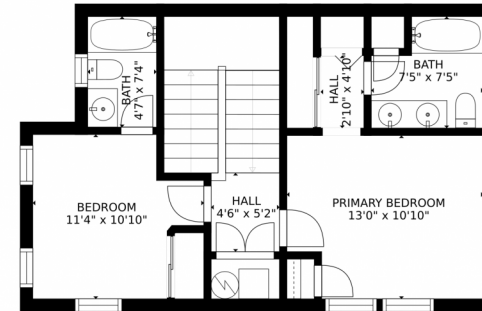
Taylor Haas
303-665-7368
taylorh@coloradorpm.com
<https://www.coloradorpm.com/available-rental-properties-denver>



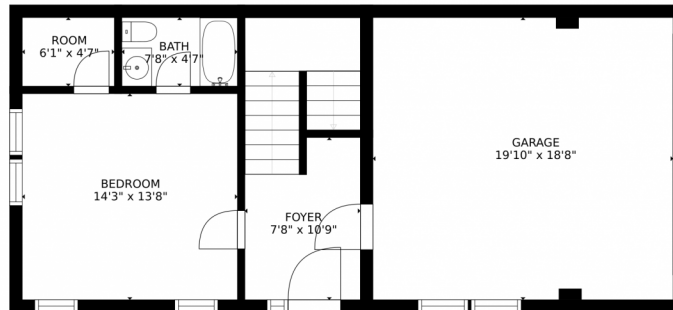
9517 Longs Peak Drive, Henderson, CO 80640 – All Floors



FLOOR 2



FLOOR 3



FLOOR 1

Estimated areas

GLA FLOOR 1: 481 sq. ft., excluded 421 sq. ft.
 GLA FLOOR 2: 808 sq. ft., excluded 204 sq. ft.
 GLA FLOOR 3: 612 sq. ft., excluded 0 sq. ft.
 Total GLA 1901 sq. ft., total scanned area 2526 sq. ft.

SIZES AND DIMENSIONS ARE APPROXIMATE, ACTUAL MAY VARY.



Disclaimer: Sizes and Dimensions are Approximate, Actual May Vary.



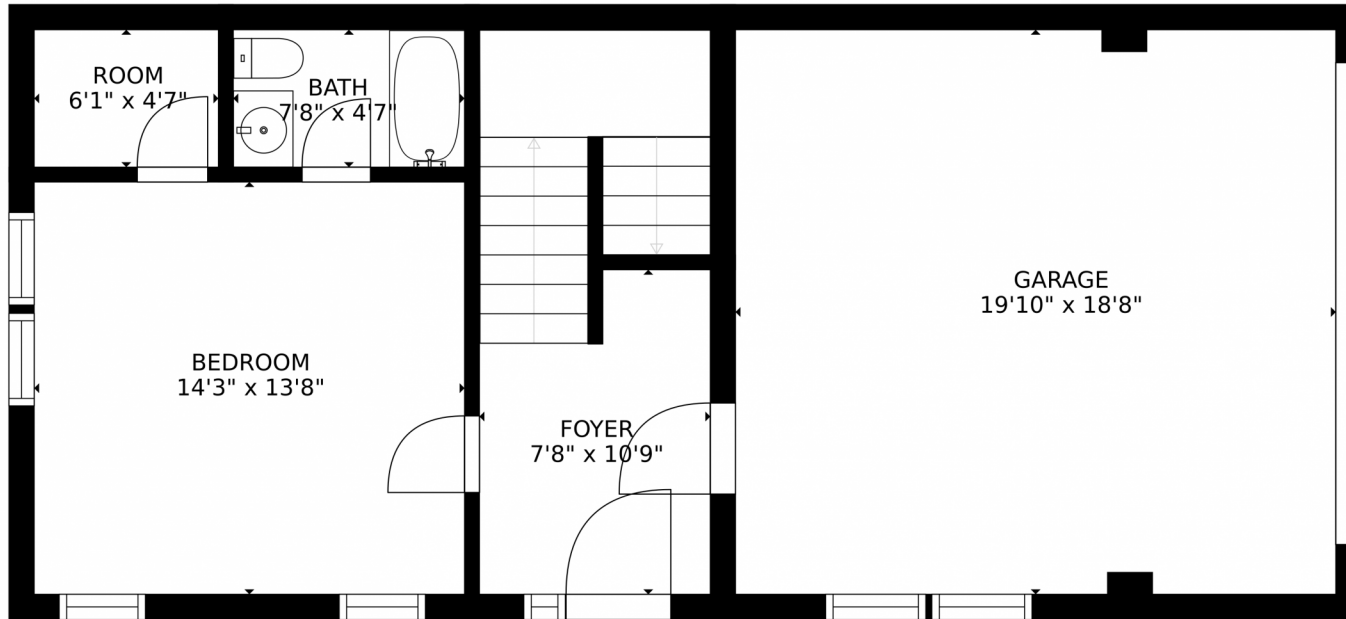
Taylor Haas
 303-665-7368
 taylorh@coloradorpm.com
<https://www.coloradorpm.com/available-rental-properties-denver>



Scan code
 for more
 property
 details



9517 Longs Peak Drive, Henderson, CO 80640 – First Floor



Estimated areas

GLA FLOOR 1: 481 sq. ft., excluded 421 sq. ft.
GLA FLOOR 2: 808 sq. ft., excluded 204 sq. ft.
GLA FLOOR 3: 612 sq. ft., excluded 0 sq. ft.
Total GLA 1901 sq. ft., total scanned area 2526 sq. ft.

SIZES AND DIMENSIONS ARE APPROXIMATE, ACTUAL MAY VARY.



Disclaimer: Sizes and Dimensions are Approximate, Actual May Vary.



Taylor Haas

303-665-7368

taylorh@coloradorpm.com

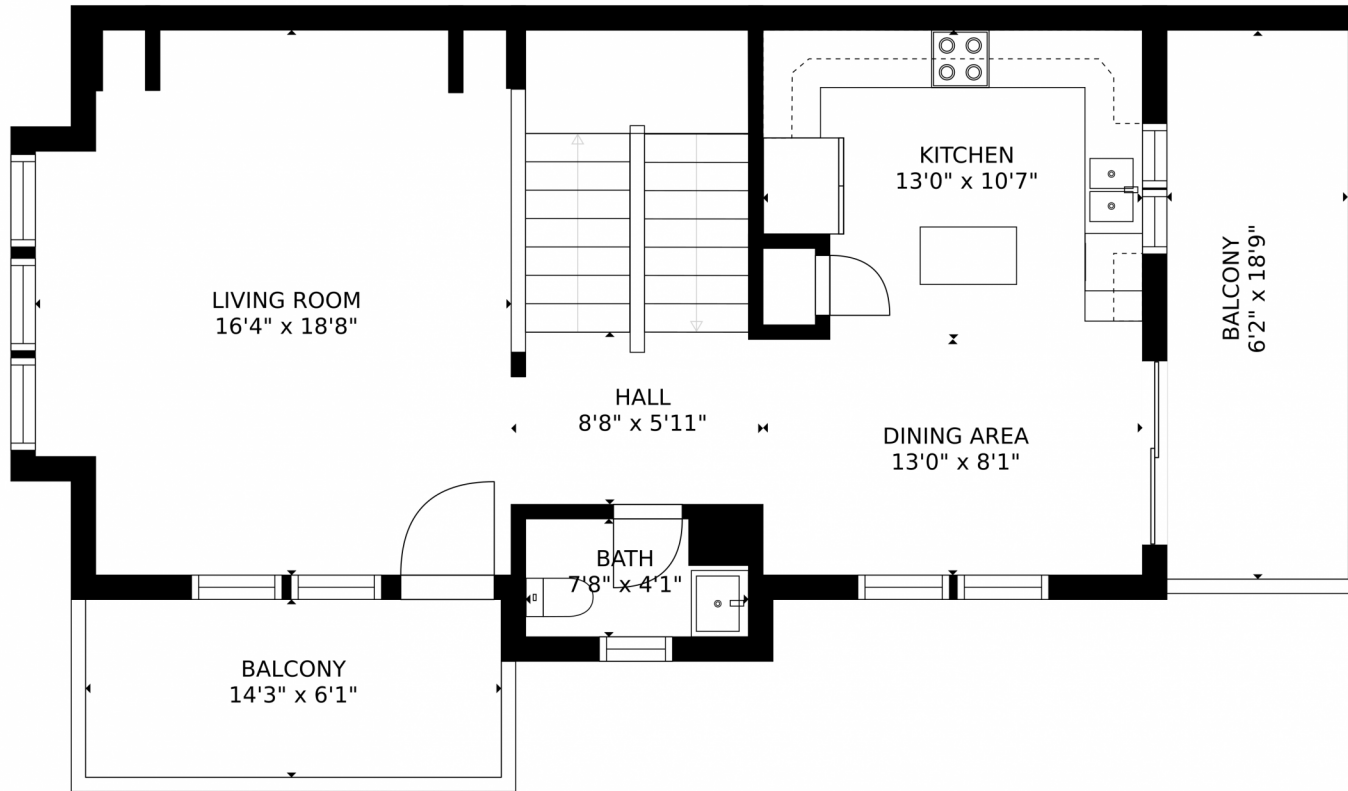
<https://www.coloradorpm.com/available-rental-properties-denver>



Scan code
for more
property
details



9517 Longs Peak Drive, Henderson, CO 80640 – Second Floor



Estimated areas

GLA FLOOR 1: 481 sq. ft, excluded 421 sq. ft
GLA FLOOR 2: 808 sq. ft, excluded 204 sq. ft
GLA FLOOR 3: 612 sq. ft, excluded 0 sq. ft
Total GLA 1901 sq. ft, total scanned area 2526 sq. ft

SIZES AND DIMENSIONS ARE APPROXIMATE, ACTUAL MAY VARY.



Disclaimer: Sizes and Dimensions are Approximate, Actual May Vary.



Taylor Haas

303-665-7368

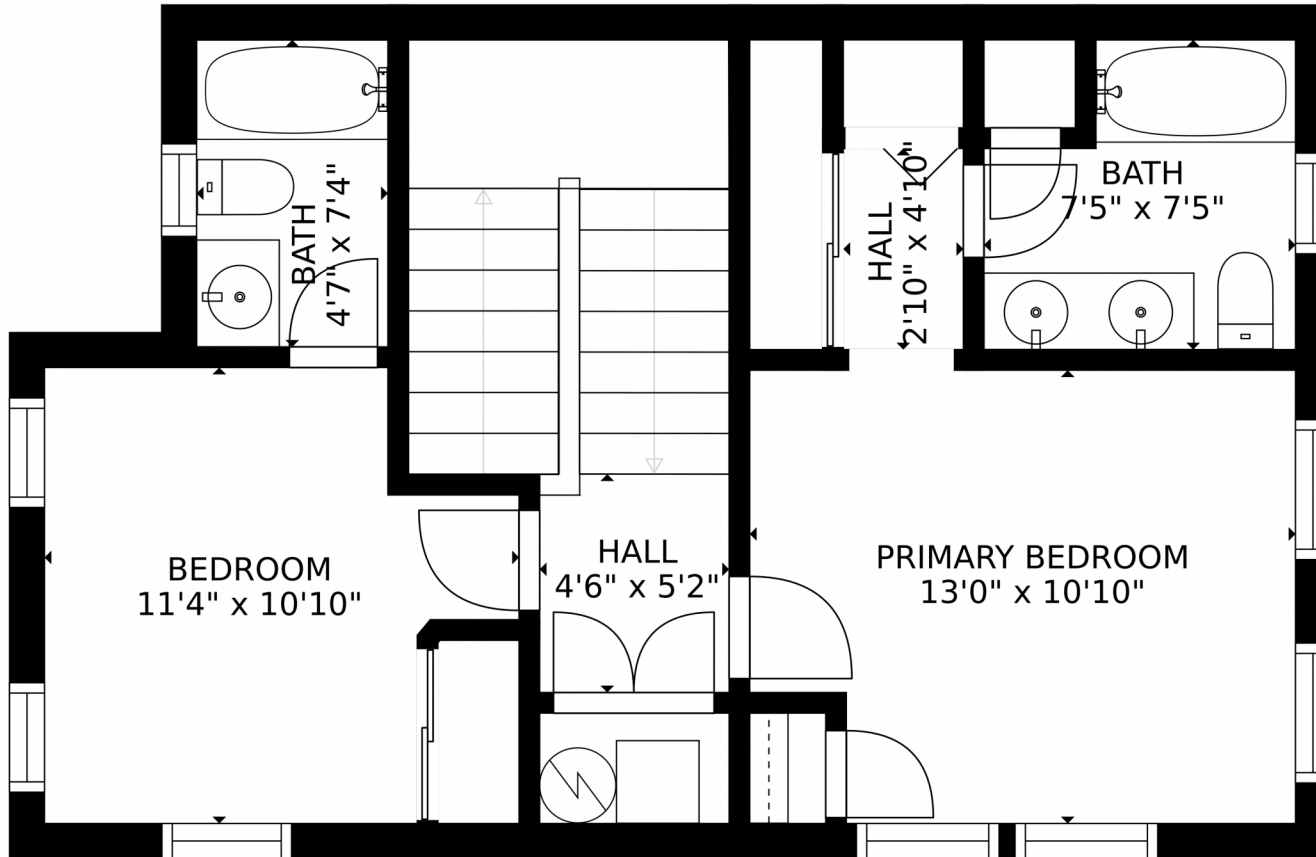
taylorh@coloradorpm.com

<https://www.coloradorpm.com/available-rental-properties-denver>



Scan code
for more
property
details





Estimated areas

GLA FLOOR 1: 481 sq. ft. excluded 421 sq. ft.
GLA FLOOR 2: 898 sq. ft. excluded 294 sq. ft.
GLA FLOOR 3: 612 sq. ft. excluded 0 sq. ft.
Total GLA 1901 sq. ft. total scanned area 2526 sq. ft.

SIZES AND DIMENSIONS ARE APPROXIMATE, ACTUAL MAY VARY.



Disclaimer: Sizes and Dimensions are Approximate, Actual May Vary.



Taylor Haas

303-665-7368

taylorh@coloradorpm.com

<https://www.coloradorpm.com/available-rental-properties-denver>



Scan code
for more
property
details

