




 Single Family

 1998 SQFT

 4 Beds

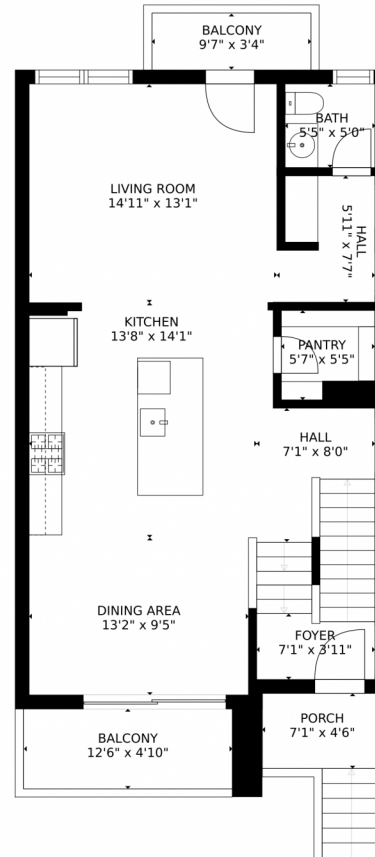
 4 Baths



Taylor Haas
303-665-7368
taylorh@coloradorpm.com
<https://www.coloradorpm.com/available-rental-properties-denver>



7479 Hunter Jumper Drive, Colorado Springs, CO 80922 – Main Level



Estimated areas

GLA FLOOR 1: 0 sq. ft., excluded 838 sq. ft.
GLA FLOOR 2: 853 sq. ft., excluded 144 sq. ft.
GLA FLOOR 3: 806 sq. ft., excluded 47 sq. ft.
Total GLA 1659 sq. ft., total scanned area 2688 sq. ft.

SIZES AND DIMENSIONS ARE APPROXIMATE, ACTUAL MAY VARY.



Disclaimer: Sizes and Dimensions are Approximate, Actual May Vary.



Taylor Haas

303-665-7368

taylorh@coloradorpm.com

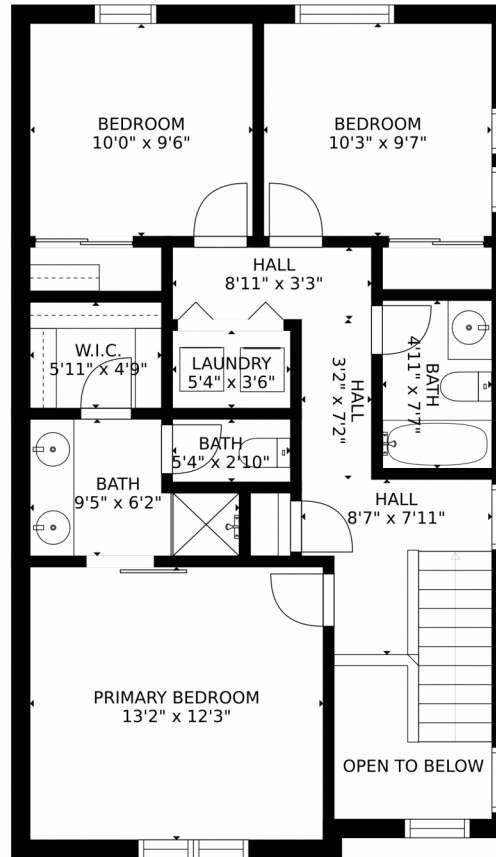
<https://www.coloradorpm.com/available-rental-properties-denver>



Scan code
for more
property
details



7479 Hunter Jumper Drive, Colorado Springs, CO 80922 — Upper Level



Estimated areas

GLA FLOOR 1: 0 sq. ft., excluded 838 sq. ft.
GLA FLOOR 2: 853 sq. ft., excluded 144 sq. ft.
GLA FLOOR 3: 806 sq. ft., excluded 47 sq. ft.
Total GLA 1659 sq. ft., total scanned area 2688 sq. ft.

SIZES AND DIMENSIONS ARE APPROXIMATE, ACTUAL MAY VARY.



Disclaimer: Sizes and Dimensions are Approximate, Actual May Vary.



Taylor Haas

303-665-7368

taylorh@coloradorpm.com

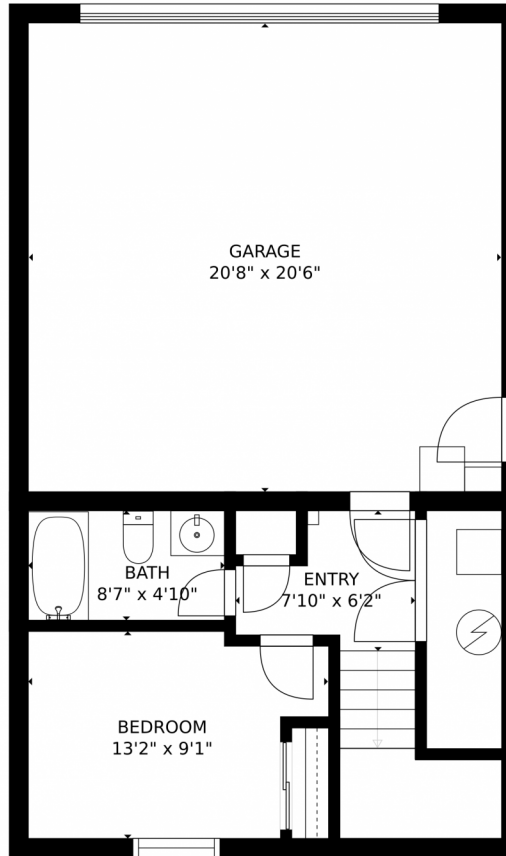
<https://www.coloradorpm.com/available-rental-properties-denver>



Scan code
for more
property
details



7479 Hunter Jumper Drive, Colorado Springs, CO 80922 — Ground Level



Estimated areas

GLA FLOOR 1: 0 sq. ft., excluded 839 sq. ft.
GLA FLOOR 2: 853 sq. ft., excluded 144 sq. ft.
GLA FLOOR 3: 806 sq. ft., excluded 47 sq. ft.
Total GLA 1659 sq. ft., total scanned area 2688 sq. ft.

SIZES AND DIMENSIONS ARE APPROXIMATE, ACTUAL MAY VARY.



Disclaimer: Sizes and Dimensions are Approximate, Actual May Vary.



Taylor Haas

303-665-7368

taylorh@coloradorpm.com

<https://www.coloradorpm.com/available-rental-properties-denver>



Scan code
for more
property
details



7479 Hunter Jumper Drive, Colorado Springs, CO 80922 – All Levels



Estimated areas

GLA FLOOR 1: 0 sq. ft. excluded 839 sq. ft.
 GLA FLOOR 2: 853 sq. ft. excluded 144 sq. ft.
 GLA FLOOR 3: 806 sq. ft. excluded 47 sq. ft.
 Total GLA 1659 sq. ft. total scanned area 2688 sq. ft.

SIZES AND DIMENSIONS ARE APPROXIMATE, ACTUAL MAY VARY.



Disclaimer: Sizes and Dimensions are Approximate, Actual May Vary.



Taylor Haas
 303-665-7368
 taylorh@coloradorpm.com
<https://www.coloradorpm.com/available-rental-properties-denver>



Scan code
 for more
 property
 details

