



Single Family



6779 SQFT



6 Beds



5/1 Baths



3 Car



0.37 Acre

PROPERTY DETAILS

Gorgeous custom built home located in the highly sought after gated community, The Highwoods. Majority of the inside of the home was recently painted and new roof was added in 2016. There are 6 bedrooms, 6 bathrooms, three car garage, white oak hardwood and stone floors throughout the majority of the home, a fenced yard, mountain views and a gate to the greenbelt with access to miles of trails. Enter into this beautiful open concept living, grand two story great room with beamed ceilings and two separate staircases for ease to move throughout the home. Walk from the garage into a well thought out mudroom with abundant storage containing lockers/cabinets and built in bench. No problem finding a private place to work in this home with a wood paneled study and built-ins, an additional office that could also be used as a craft or toy room. The kitchen has beautiful custom WoodMode cabinetry, exquisite La Cornue Cornufe Range, 2 dishwashers, warming drawer, Perrin & Rowe Faucets, Shaws apron front sink, pullout spice racks, Subzero Fridge, Scottsman ice machine, wine fridge, and walk in pantry. Adjacent to the kitchen, enjoy one of the five beautiful fireplaces throughout the home. Upon entering the primary bedroom you will be greeted with vaulted ceilings. Unwind in the sitting area in front of the cast stone mantle gas fireplace. Relax in the primary bath with WoodMode custom cabinetry, marble countertops, amazing freestanding bathtub and 2 individual walk in



Beth Smart
303-549-6907
beth@bethsmart.com



Scan code
for more
property
details



closets. The walkout basement is an entertainers dream with 3 TV's, a custom bar, 2 paneled refrigerators, dishwasher, microwave, Scotsman ice machine, Shaws farmhouse sink and heated floors. For those who prefer to relax outside, enjoy the firepit, or built in gas fireplace.

This home is ready for your family to fill with love and memories for every day and those memory making special occasions.



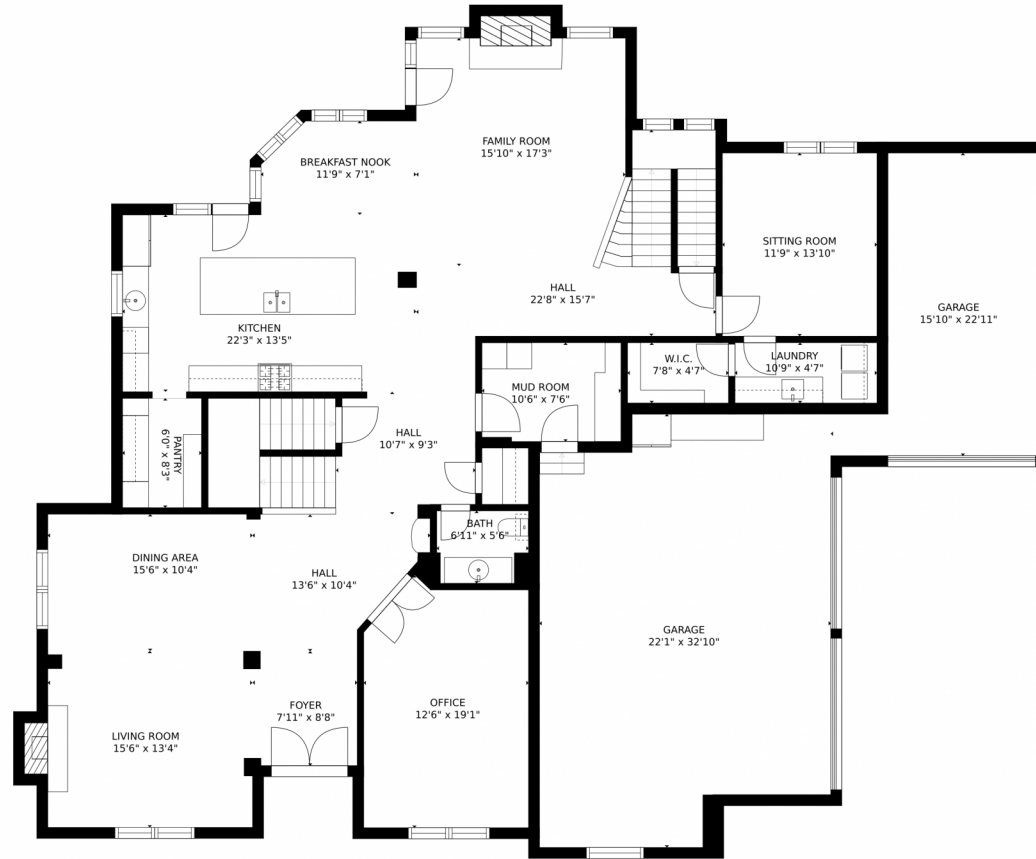
Beth Smart
303-549-6907
beth@bethsmart.com



Scan code
for more
property
details



497 Fairchild Drive, Highlands Ranch, CO 80126 – 1st Floor



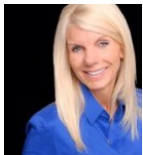
Estimated areas

GLA FLOOR 1: 0 sq. ft., excluded 2791 sq. ft.
GLA FLOOR 2: 2310 sq. ft., excluded 1066 sq. ft.
GLA FLOOR 3: 2243 sq. ft., excluded 967 sq. ft.
Total GLA 4753 sq. ft., total scanned area 9577 sq. ft.

SIZES AND DIMENSIONS ARE APPROXIMATE, ACTUAL MAY VARY.



Disclaimer: Sizes and Dimensions are Approximate, Actual May Vary.



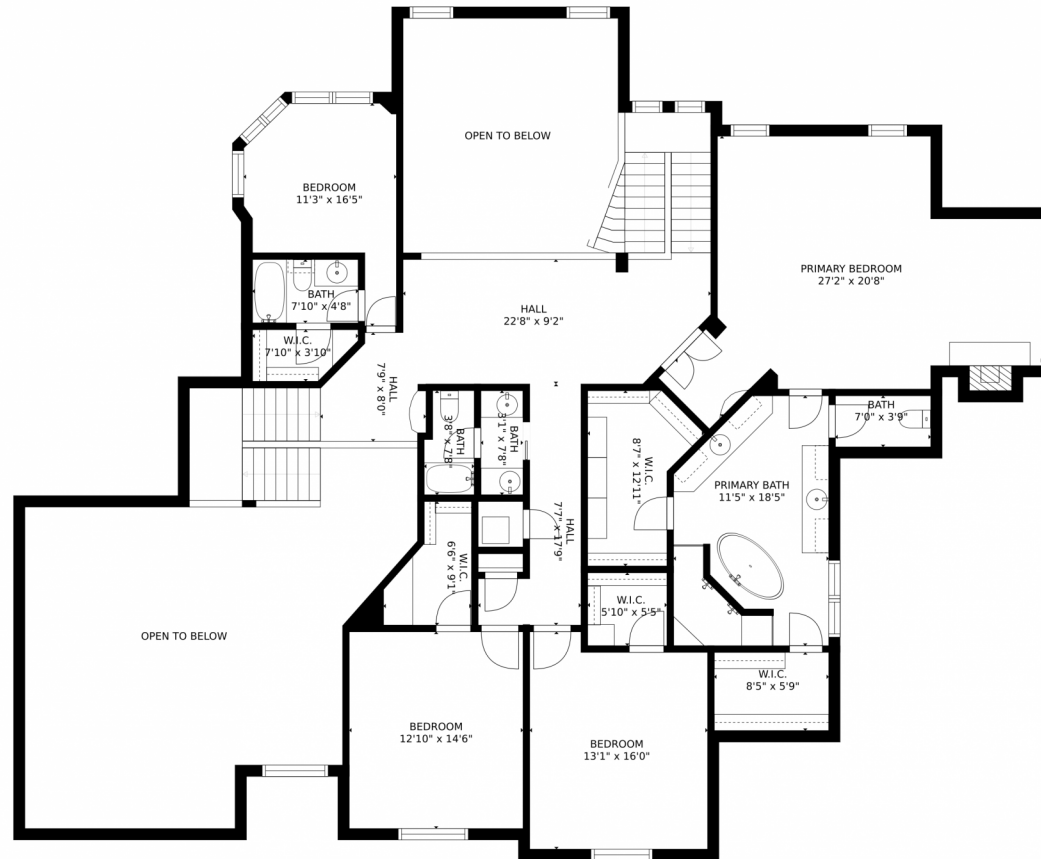
Beth Smart
303-549-6907
beth@bethsmart.com



Scan code
for more
property
details



497 Fairchild Drive, Highlands Ranch, CO 80126 – 2nd Floor



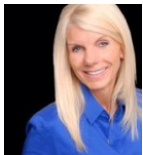
Estimated areas

GLA FLOOR 1: 0 sq. ft., excluded 2791 sq. ft.
GLA FLOOR 2: 2310 sq. ft., excluded 1366 sq. ft.
GLA FLOOR 3: 2243 sq. ft., excluded 967 sq. ft.
Total GLA 4753 sq. ft., total scanned area 9577 sq. ft.

SIZES AND DIMENSIONS ARE APPROXIMATE, ACTUAL MAY VARY.



Disclaimer: Sizes and Dimensions are Approximate, Actual May Vary.



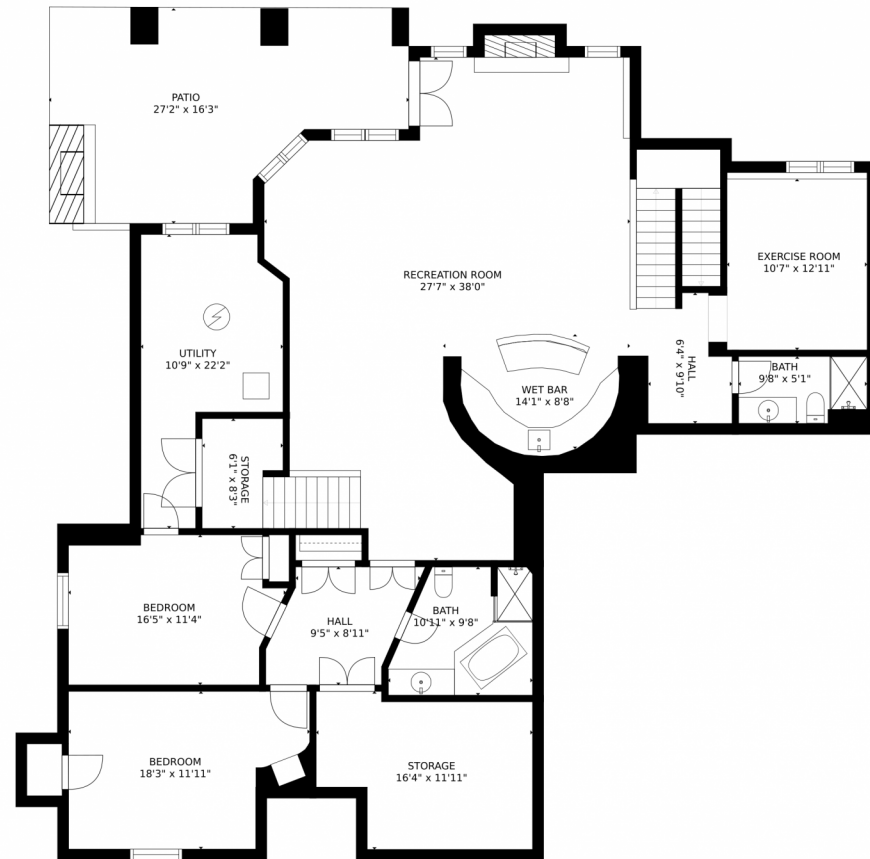
Beth Smart
303-549-6907
beth@bethsmart.com



Scan code
for more
property
details



497 Fairchild Drive, Highlands Ranch, CO 80126 – Basement



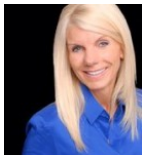
Estimated areas

GLA FLOOR 1: 0 sq. ft. excluded 2791 sq. ft.
GLA FLOOR 2: 2310 sq. ft. excluded 1366 sq. ft.
GLA FLOOR 3: 2243 sq. ft. excluded 967 sq. ft.
Total GLA 4753 sq. ft. total scanned area 9577 sq. ft.

SIZES AND DIMENSIONS ARE APPROXIMATE, ACTUAL MAY VARY.



Disclaimer: Sizes and Dimensions are Approximate, Actual May Vary.



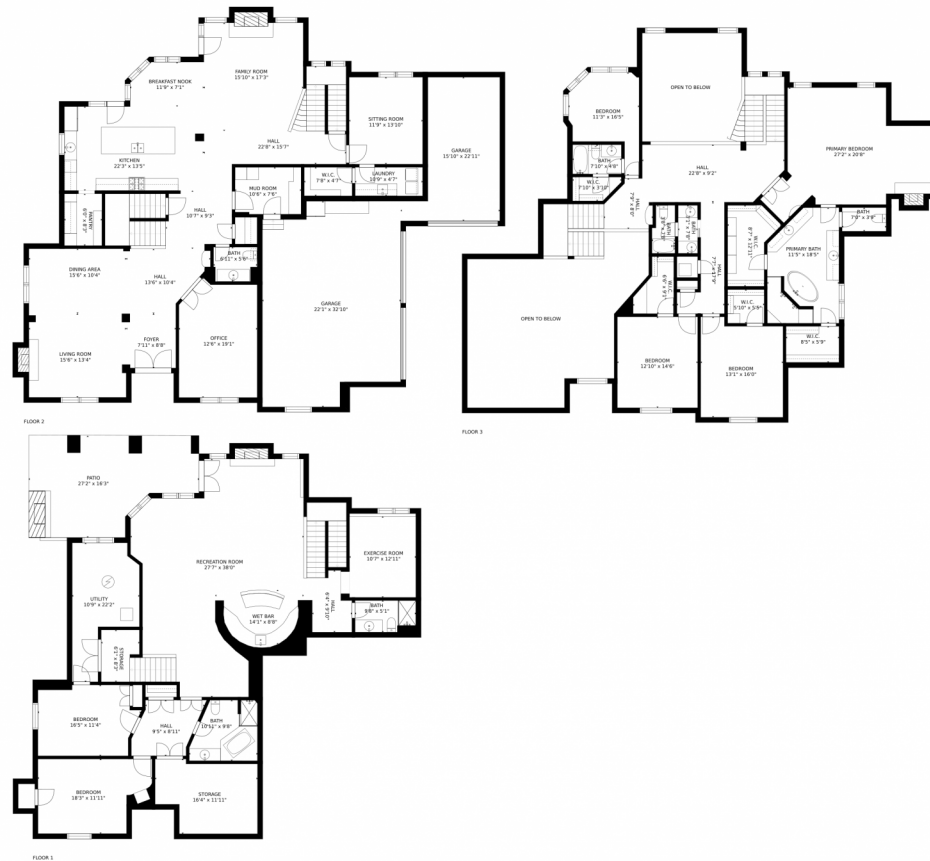
Beth Smart
303-549-6907
beth@bethsmart.com



Scan code
for more
property
details



497 Fairchild Drive, Highlands Ranch, CO 80126 – All Floors



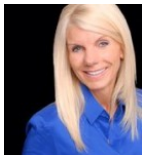
Estimated areas

GLA FLOOR 1: 0 sq. ft. excluded 2791 sq. ft.
GLA FLOOR 2: 2310 sq. ft. excluded 1366 sq. ft.
GLA FLOOR 3: 2243 sq. ft. excluded 967 sq. ft.
Total GLA 4753 sq. ft. total scanned area 9577 sq. ft.

SIZES AND DIMENSIONS ARE APPROXIMATE, ACTUAL MAY VARY.



Disclaimer: Sizes and Dimensions are Approximate, Actual May Vary.



Beth Smart
303-549-6907
beth@bethsmart.com



Scan code
for more
property
details

