



 Multi Family
  1931 SQFT
  3 Beds
  3 Baths
  1 Car
  0.04 Acre

PROPERTY DETAILS

Yes you read that correctly. A 3 bed/3 bath home in Wheat Ridge for under \$500,000! This end-unit row home is the perfect starter home and the location couldn't be better for the price. Enjoy all the conveniences of living near 44th ave and 38th ave as well as the short bike ride to bars, restaurants and breweries that main street, Tennyson st and Lowell Blvd have to offer. Most people move here to spend their days in the mountains and this home is just a few minutes to I-70; you may even beat the Saturday crowds while sleeping in a bit longer. As you enter the home you'll see the living room with its vaulted ceilings and cozy fireplace. The galley kitchen has the counter space you need as well as the pantry that's so hard to find in older homes. The Primary bedroom can be found just down the hall and to the right and you can't help but notice how huge it is! A king bed won't be a problem in this room and you'll find the walk-in closet and en suite to be the perfect size. Travel down stairs and you'll see the third bedroom and bathroom as well as a living area with tons of space accompanied by a separate storage closet. And just when you think this can't get any better, you notice the private deck in the back and the attached 1 car garage with plenty of space for additional storage. Opportunities like this don't come up often so you'll need to jump on this one quickly!

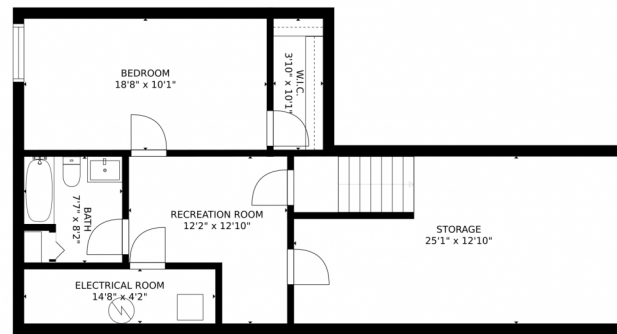
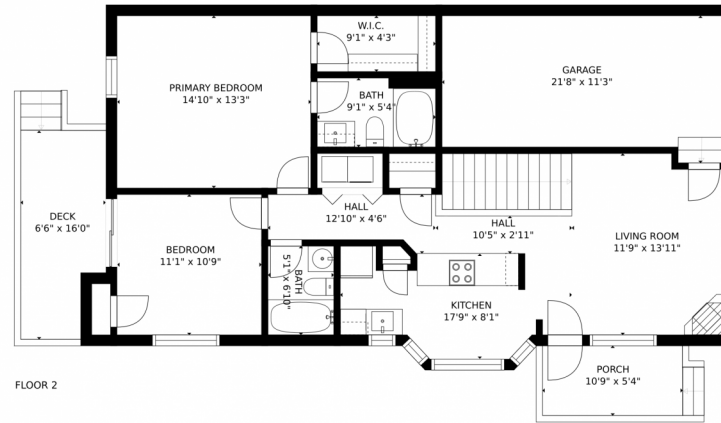


Joey Hoiescu
619-806-7014
joey@luxdenver.com
<https://www.thepropertysomm.com>

Scan code
for more
property
details




4440 Jay Street, Wheat Ridge, CO 80033 – All Levels



Estimated areas

GLA FLOOR 1: 0 sq. ft, excluded 949 sq. ft
GLA FLOOR 2: 1038 sq. ft, excluded 403 sq. ft
Total GLA 1038 sq. ft, total scanned area 2390 sq. ft

SIZES AND DIMENSIONS ARE APPROXIMATE, ACTUAL MAY VARY.



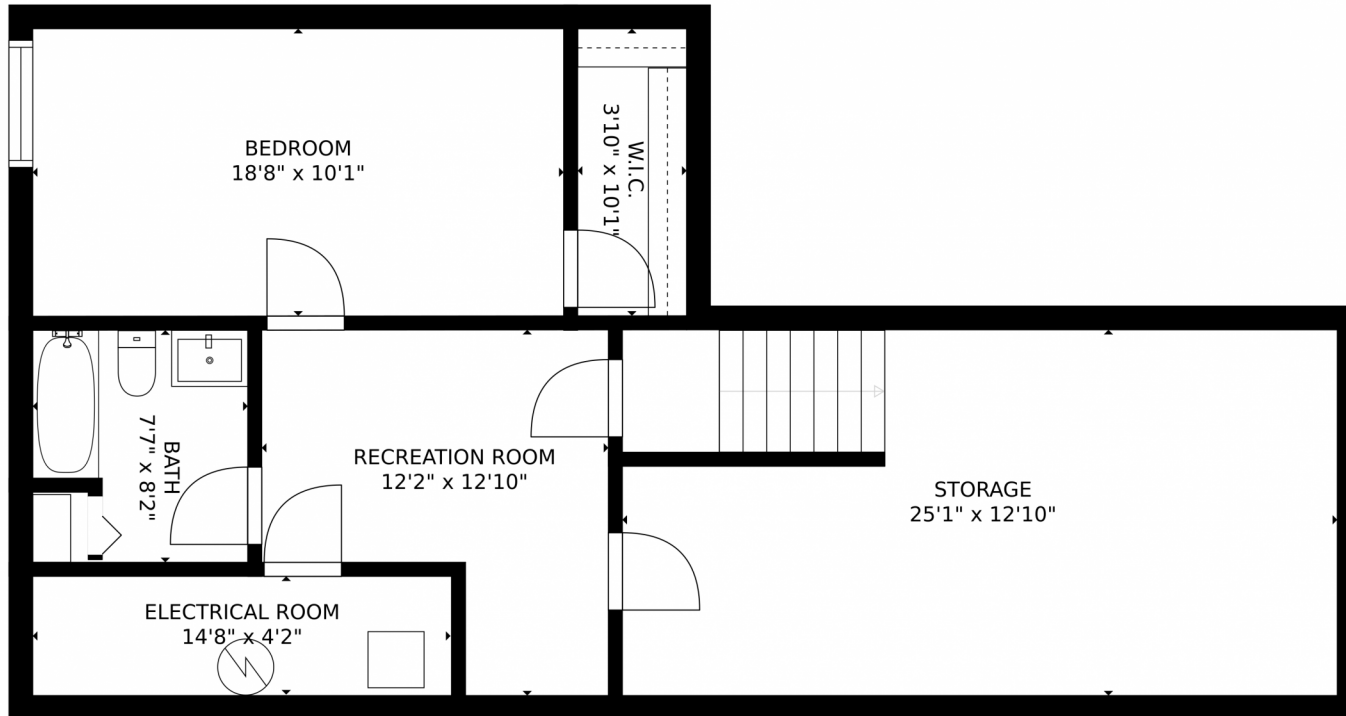
Disclaimer: Sizes and Dimensions are Approximate, Actual May Vary.



Joey Hoiescu
619-806-7014
joey@luxdenver.com
<https://www.thepropertysomm.com>



4440 Jay Street, Wheat Ridge, CO 80033 – Lower Level



Estimated areas
GLA FLOOR 1: 0 sq. ft, excluded 949 sq. ft
GLA FLOOR 2: 1038 sq. ft, excluded 403 sq. ft
Total GLA 1038 sq. ft, total scanned area 2390 sq. ft
SIZES AND DIMENSIONS ARE APPROXIMATE, ACTUAL MAY VARY.



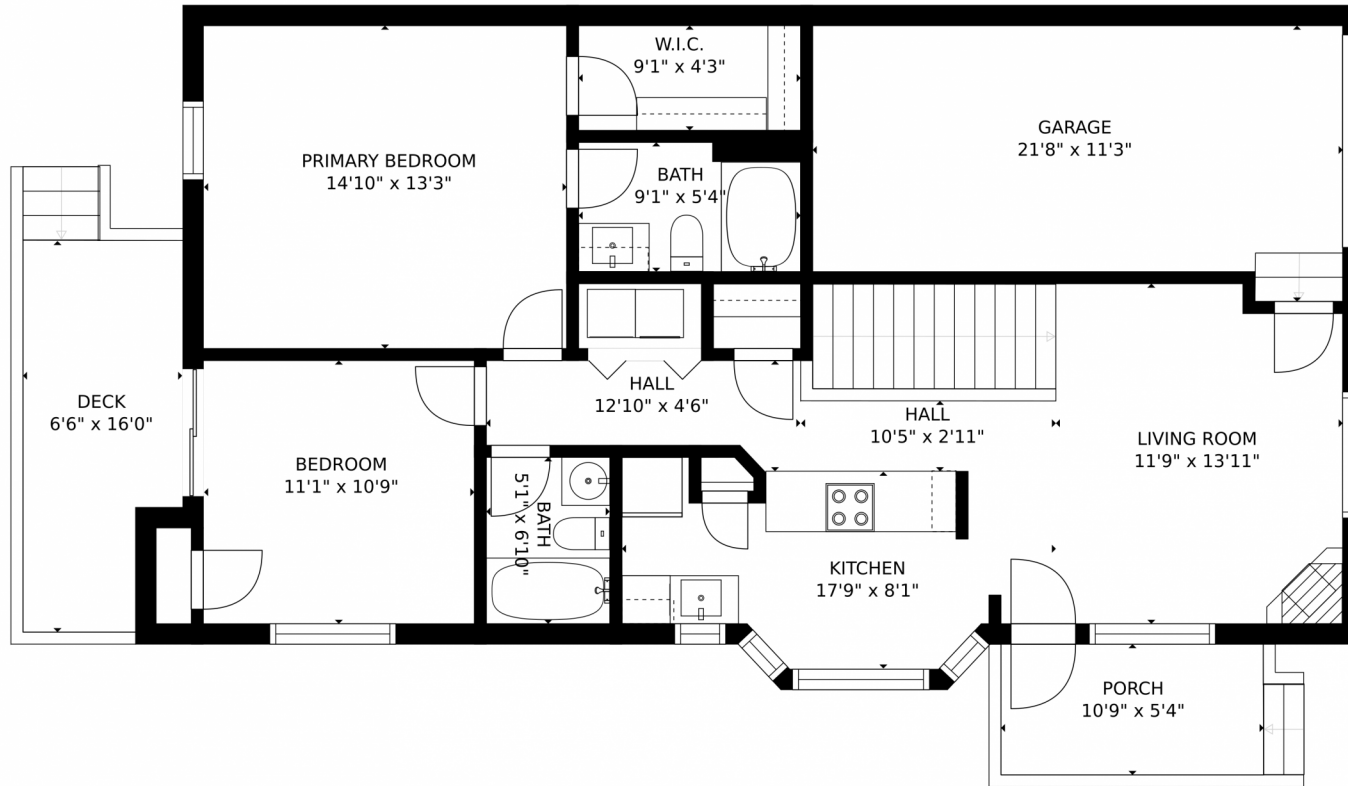
Disclaimer: Sizes and Dimensions are Approximate, Actual May Vary.



Joey Hoiescu
619-806-7014
joey@luxdenver.com
<https://www.thepertysomm.com>



4440 Jay Street, Wheat Ridge, CO 80033 – Main Level



Estimated areas

GLA FLOOR 1: 0 sq. ft, excluded 949 sq. ft.
GLA FLOOR 2: 1038 sq. ft, excluded 403 sq. ft.
Total GLA 1038 sq. ft, total scanned area 2390 sq. ft.

SIZES AND DIMENSIONS ARE APPROXIMATE, ACTUAL MAY VARY.



Disclaimer: Sizes and Dimensions are Approximate, Actual May Vary.



Joey Hoiescu

619-806-7014

joey@luxdenver.com

<https://www.thepropertysomm.com>



Scan code
for more
property
details

