



2342 Tabor Street  
 Berthoud, CO 80513  
 COMMUNITY: Hammond

MLS # 1564919  
 PRICE \$625,000



Single Family   3938 SQFT   5 Beds   4 Baths   3 Car   0.16 Acre

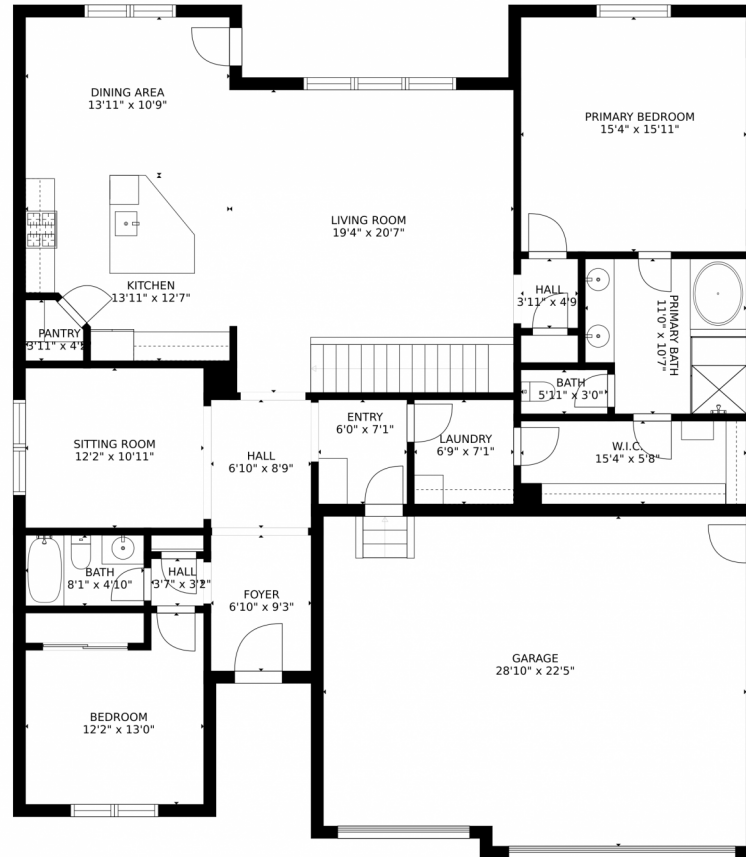
## PROPERTY DETAILS

This tastefully renovated 5 bed 4 bath Ranch style home with a finished basement is situated on a beautiful corner lot. Upon entry, you are greeted by the pristine refinished hardwood floors. A spacious living room flows nicely into the open concept kitchen boasting plenty of space for all your kitchen gadgets. This kitchen is complete with gorgeous cabinets, Calacatta quartz countertops, under cabinet lighting, walk in pantry, and a huge free standing island perfect for all of your entertaining needs. Downstairs in the fully finished basement are 3 bedrooms, 2 bathrooms, a large family room, and wet bar with brand new carpeting throughout. This house is truly move in ready and feels like new, with new interior paint, brand new appliances, new water heater, new lighting and the list goes on! The oversized 3 car garage has side door with backyard access and will have epoxy coated floors completed before closing.



**Christopher Russell**  
 469-774-5103  
 chris.russell@homewithimpact.com





Estimated areas

GLA FLOOR 1: 0 sq. ft, excluded 1930 sq. ft  
GLA FLOOR 2: 2040 sq. ft, excluded 684 sq. ft  
Total GLA 2040 sq. ft, total scanned area 4654 sq. ft

SIZES AND DIMENSIONS ARE APPROXIMATE, ACTUAL MAY VARY.



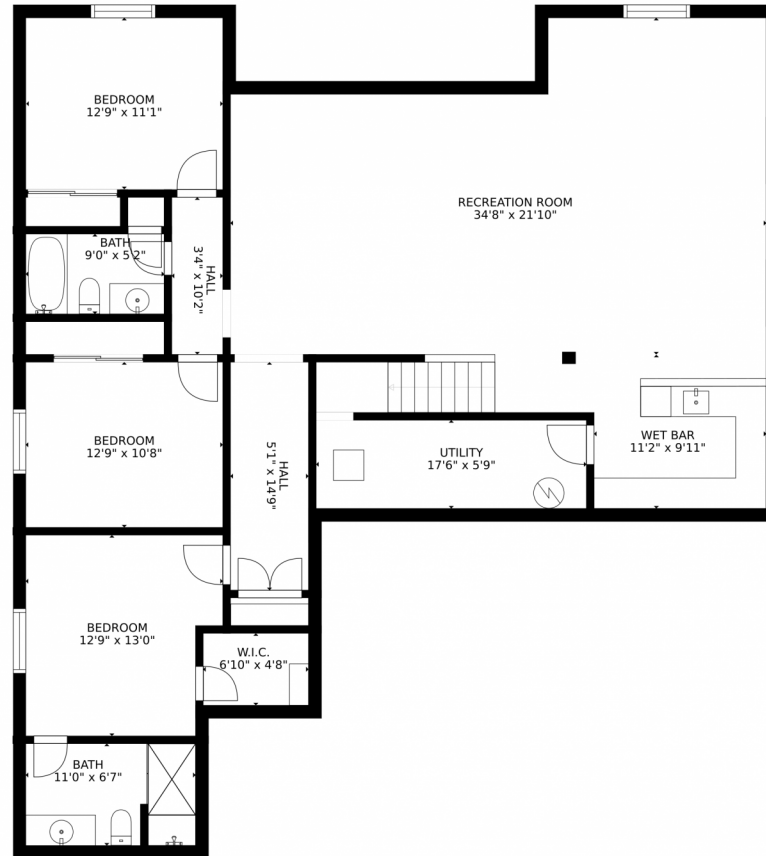
Disclaimer: Sizes and Dimensions are Approximate, Actual May Vary.



**Christopher Russell**  
469-774-5103  
chris.russell@homewithimpact.com



# 2342 Tabor Street, Berthoud, CO 80513 — Basement



### Estimated areas

GLA FLOOR 1: 0 sq. ft, excluded 1930 sq. ft  
GLA FLOOR 2: 2040 sq. ft, excluded 684 sq. ft  
Total GLA 2040 sq. ft, total scanned area 4654 sq. ft

SIZES AND DIMENSIONS ARE APPROXIMATE, ACTUAL MAY VARY.



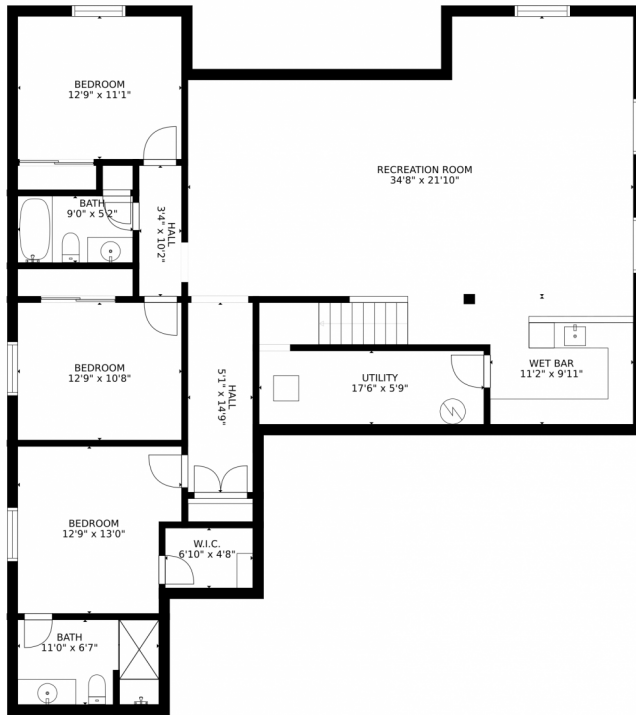
Disclaimer: Sizes and Dimensions are Approximate, Actual May Vary.



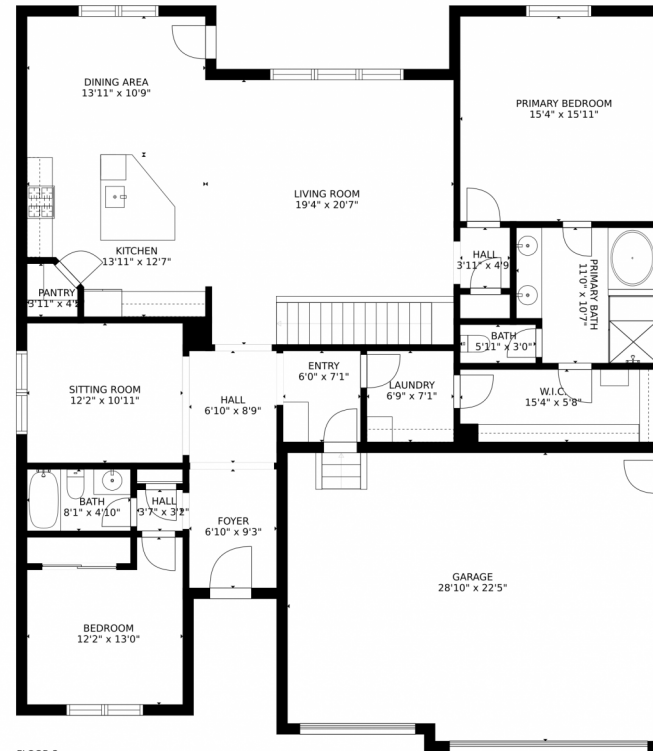
**Christopher Russell**  
469-774-5103  
chris.russell@homewithimpact.com



# 2342 Tabor Street, Berthoud, CO 80513 – All Levels



FLOOR 1



FLOOR 2

### Estimated areas

GLA FLOOR 1: 0 sq. ft, excluded 1930 sq. ft  
 GLA FLOOR 2: 2040 sq. ft, excluded 684 sq. ft  
 Total GLA 2040 sq. ft, total scanned area 4654 sq. ft

SIZES AND DIMENSIONS ARE APPROXIMATE, ACTUAL MAY VARY.



Disclaimer: Sizes and Dimensions are Approximate, Actual May Vary.



**Christopher Russell**  
 469-774-5103  
 chris.russell@homewithimpact.com



Scan code  
 for more  
 property  
 details

