



1822 Painter Drive
 Monument, CO 80132
 COMMUNITY: Misty Acres

MLS # 5064768
 PRICE \$825,000



Single Family



4669 SQFT



5 Beds



4 Baths



3 Car



0.54 Acre

PROPERTY DETAILS

Welcome home to the highly desirable and established Misty Acres community of Monument! This phenomenal and serene neighborhood offers larger lots and a multitude of semi-wooded open spaces bringing nature right to your backyard, all without an HOA. Walk to the award-winning Palmer Ridge HS in less than a mile or arrive at the I-25 and Palmer Divide Rd exchange within minutes making your commute a breeze whether you are traveling to the Springs or Denver. Many honey-do's have already been honey-done on this sparkling and sprawling two-story abode to include all exterior stucco, roof and gutters along with breathtaking professional landscaping that is partially Xeriscaped saving you tons of time and money on maintenance. Many updates have also been made inside from a fully remastered owner's bathroom and kitchen to new interior paint throughout the main level along with new carpet, tile flooring, and almost all of the home's lighting is brand new totaling just over \$100,000 in combined home upgrades. This home was flawlessly designed with your every lifestyle convenience in mind from the main level bedroom to a glorious open concept entertainment space quietly nestled at the back of the home connecting you to the outdoor living space. Arrive upstairs to the owner's suite or the wing of spare bedrooms byway of two separate staircases connected by a sprawling loft area offering endless potential. Each of the four bedrooms



Tatyana Sturm
 720-350-5909
 tatyana@exitrealtydtc.com
 https://thestorckteam.com



Scan code
 for more
 property
 details



upstairs is complete with a walk in closet along with another walk in storage closet off of the loft. Perfectly placed atop a tranquil half-acre corner lot adjacent to open space, the outdoor living area is absolutely phenomenal boasting an extended patio with a built-in portico and gas valve ready for your next Summer BBQ along with a separately fenced dog run and several trees with stunning mountain views completing your tranquil outdoor oasis.



Tatyana Sturm

720-350-5909

tatyana@exitrealtydtc.com

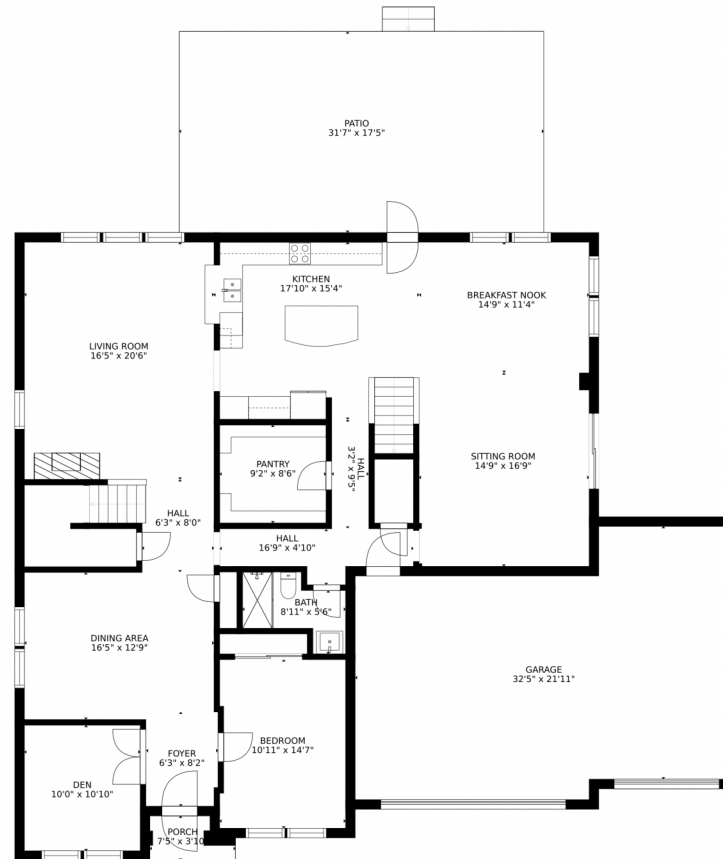
<https://thestorckteam.com>



Scan code
for more
property
details



1822 Painter Drive, Monument, CO 80132 – Main Level



Estimated areas

GLA FLOOR 1: 2182 sq. ft, excluded 1296 sq. ft
GLA FLOOR 2: 2568 sq. ft, excluded 50 sq. ft
Total GLA 4750 sq. ft, total scanned area 6096 sq. ft

SIZES AND DIMENSIONS ARE APPROXIMATE, ACTUAL MAY VARY.



Disclaimer: Sizes and Dimensions are Approximate, Actual May Vary.



Tatyana Sturm
720-350-5909
tatyana@exitrealttydc.com
<https://thestorckteam.com>



Scan code
for more
property
details



1822 Painter Drive, Monument, CO 80132 – Upper Level



Estimated areas

GLA FLOOR 1: 2182 sq. ft, excluded 1296 sq. ft
GLA FLOOR 2: 2568 sq. ft, excluded 50 sq. ft
Total GLA 4750 sq. ft, total scanned area 6096 sq. ft

SIZES AND DIMENSIONS ARE APPROXIMATE, ACTUAL MAY VARY.



Disclaimer: Sizes and Dimensions are Approximate, Actual May Vary.



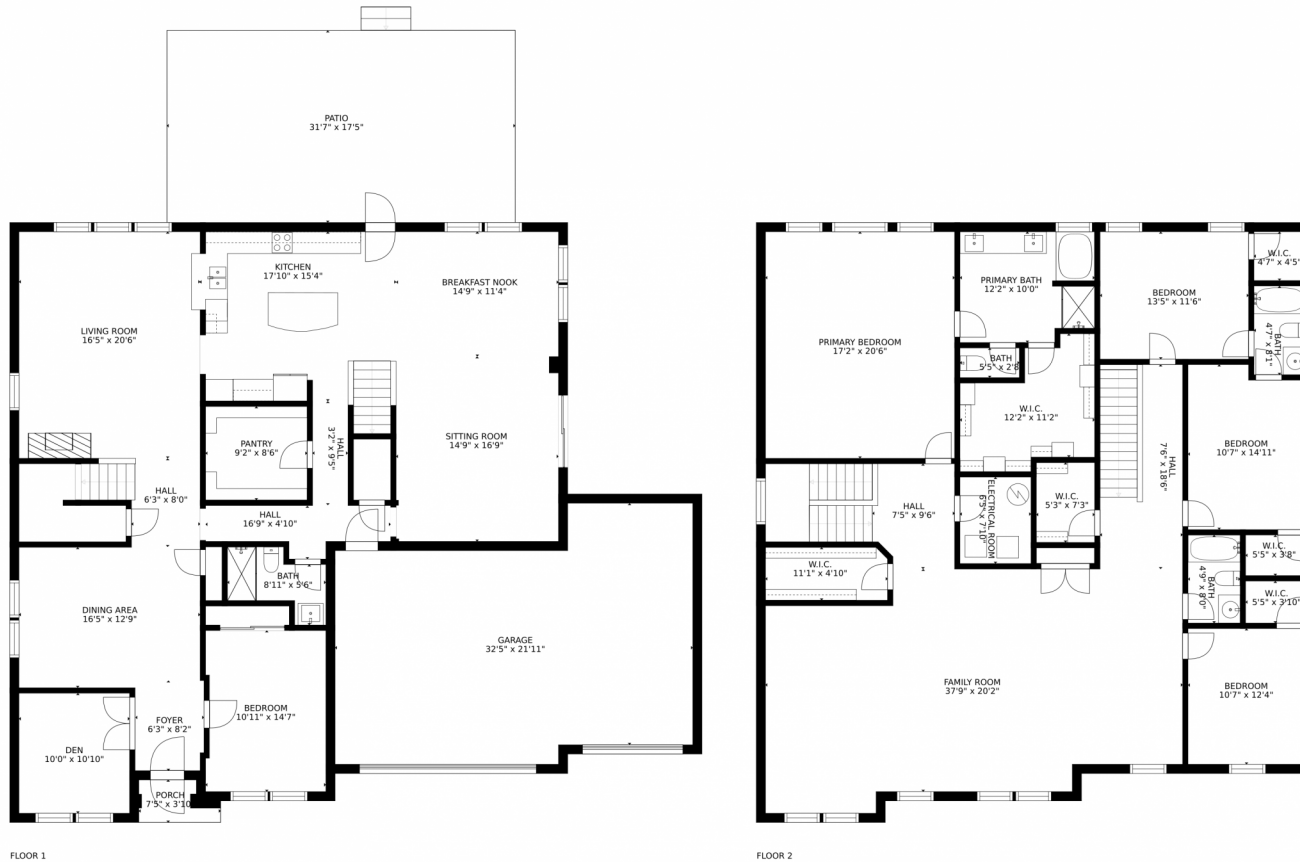
Tatyana Sturm
720-350-5909
tatyana@exitrealtydtc.com
<https://thestorckteam.com>



Scan code
for more
property
details



1822 Painter Drive, Monument, CO 80132 – 1822Painter Dr-all-in-one-dim_0



Estimated areas

GLA FLOOR 1: 2182 sq. ft, excluded 1296 sq. ft
GLA FLOOR 2: 2568 sq. ft, excluded 50 sq. ft
Total GLA 4750 sq. ft, total scanned area 6096 sq. ft

SIZES AND DIMENSIONS ARE APPROXIMATE, ACTUAL MAY VARY.



Disclaimer: Sizes and Dimensions are Approximate, Actual May Vary.



Tatyana Sturm
720-350-5909
tatyana@exitrealtydtc.com
<https://thestorckteam.com>



Scan code
for more
property
details

