



6437 S Dover Street
 Littleton, CO 80123
 COMMUNITY: Woodmar Village

MLS # 5091542
 PRICE \$520,000



Single Family



1666 SQFT



2 Beds



2/1 Baths



2 Car



0.17 Acre

PROPERTY DETAILS

Open, sunny and inviting ranch style floor plan with hardwood floors, recessed lighting, updated kitchen with granite counter tops, pantry, gas stove, kitchen island, and French style doors leading out to a .17 acre lot with privacy fencing-perfect retreat for summer gatherings. Plus, the main level offers a guest bathroom and a large primary bedroom with French style doors overlooking the back yard, large closet, and a private ensuite with double sinks and a walk-in shower. The finished basement is open with egress windows, full bathroom, bedroom #2 with a large walk in closet and a bonus 3rd non conforming bedroom/office that opens to the laundry room. Stay cool this summer with double pane windows and central air conditioning. All you need to do is move in. Buyers home warranty offered to all buyer's! This home is centrally located near the foothills and major highways, Chatfield state park, numerous trails and parks, local eateries, new home construction and various shopping. No HOA! Photos will be available next Thursday 3/31/2022. Showings will begin on 4/1/2022.



Danielle Marcus

303-669-7974

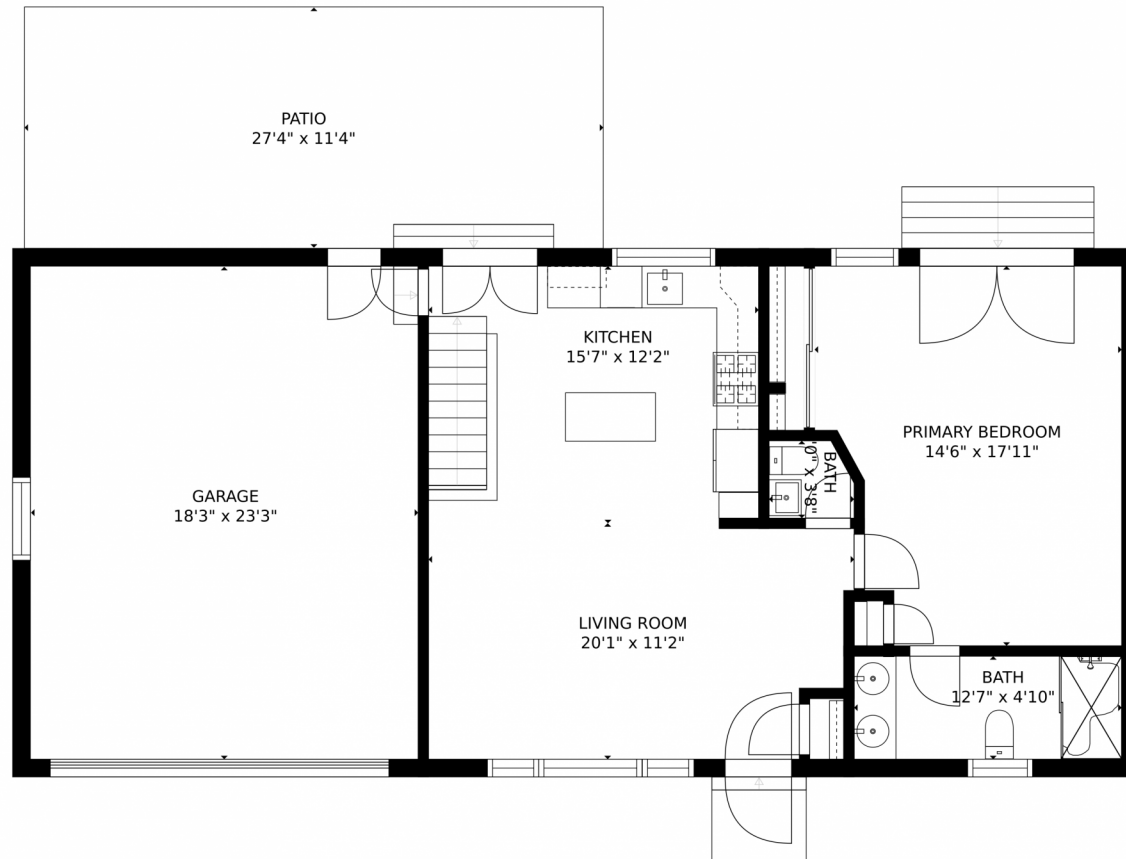
danielle@themarcusteam.com

<https://www.themarcusteam.com>



Scan code
 for more
 property
 details





Estimated areas

GLA FLOOR 1: 0 sq. ft, excluded 826 sq. ft
GLA FLOOR 2: 848 sq. ft, excluded 788 sq. ft
Total GLA 848 sq. ft, total scanned area 2462 sq. ft

SIZES AND DIMENSIONS ARE APPROXIMATE, ACTUAL MAY VARY.



Disclaimer: Sizes and Dimensions are Approximate, Actual May Vary.



Danielle Marcus

303-669-7974

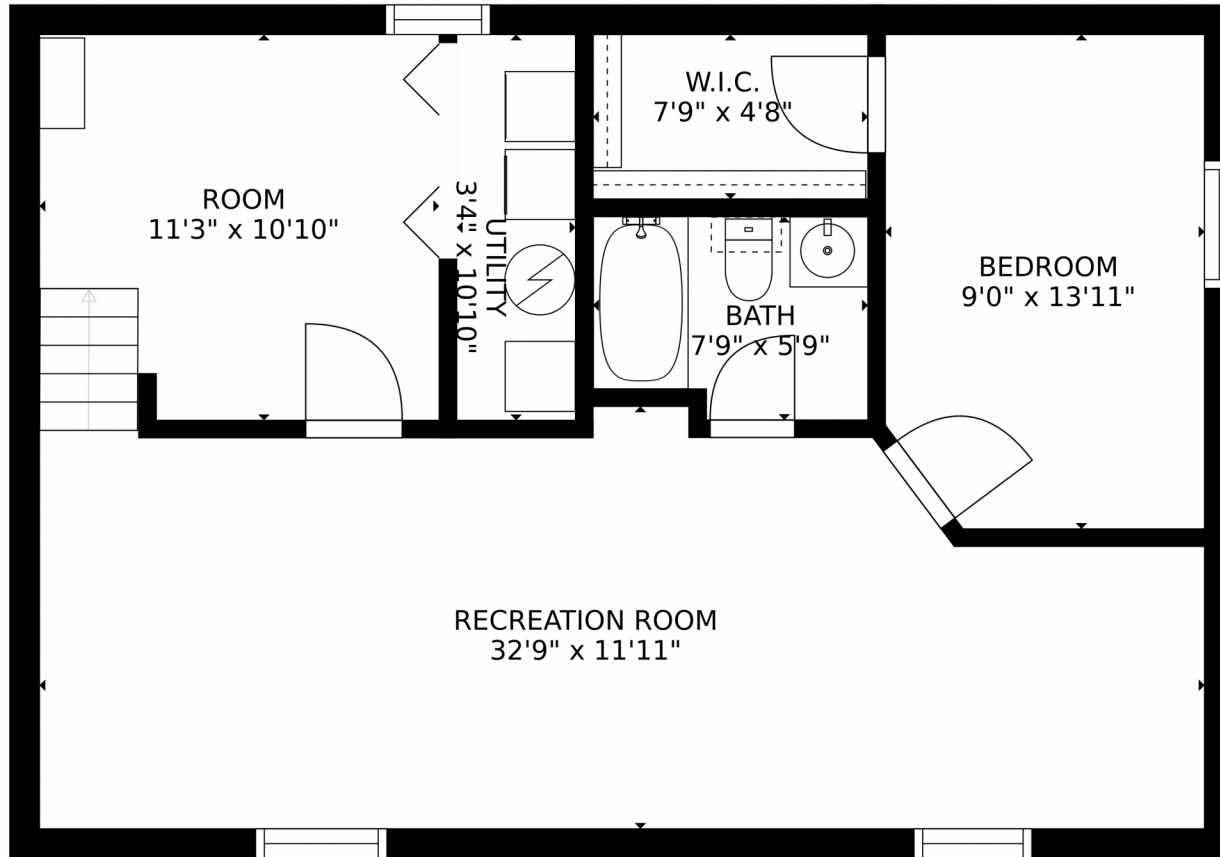
danielle@themarkusteam.com

<https://www.themarkusteam.com>



Scan code
for more
property
details





Estimated areas
GLA FLOOR 1: 0 sq. ft, excluded 826 sq. ft
GLA FLOOR 2: 848 sq. ft, excluded 788 sq. ft
Total GLA 848 sq. ft, total scanned area 2462 sq. ft
SIZES AND DIMENSIONS ARE APPROXIMATE, ACTUAL MAY VARY.



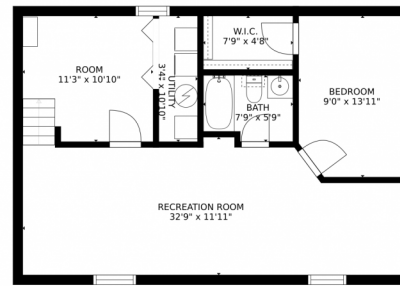
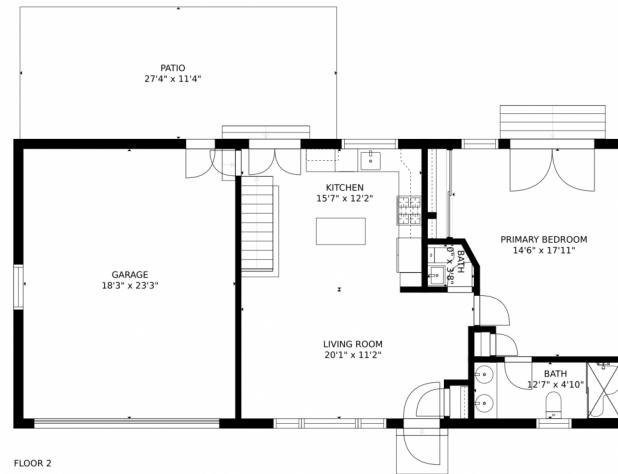
Disclaimer: Sizes and Dimensions are Approximate, Actual May Vary.



Danielle Marcus
303-669-7974
danielle@themarkusteam.com
<https://www.themarkusteam.com>



6437 S Dover Street, Littleton, CO 80123 – All Levels



Estimated areas

GLA FLOOR 1: 0 sq. ft, excluded 826 sq. ft
GLA FLOOR 2: 848 sq. ft, excluded 788 sq. ft
Total GLA 848 sq. ft, total scanned area 2462 sq. ft

SIZES AND DIMENSIONS ARE APPROXIMATE, ACTUAL MAY VARY.



Disclaimer: Sizes and Dimensions are Approximate, Actual May Vary.



Danielle Marcus

303-669-7974

danielle@themarcusteam.com

<https://www.themarcusteam.com>



Scan code
for more
property
details

