



15995 E Iliff Place
 Aurora, CO 80013
 COMMUNITY: Kingsborough

MLS # 5131531
 PRICE \$485,000



Single Family 1764 SQFT 3 Beds 2 Baths 2 Car 0.21 Acre

PROPERTY DETAILS

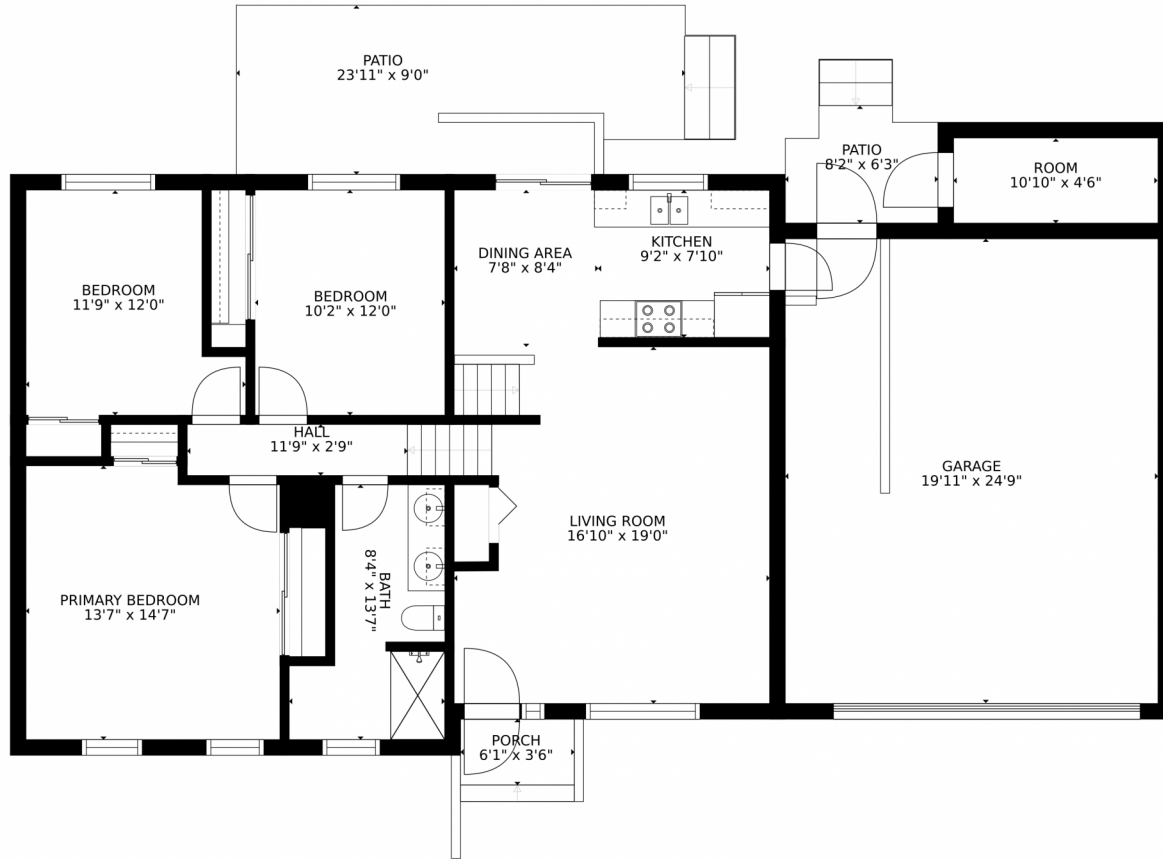
Wow! You could own a beautiful home on a corner lot in Kingsborough subdivision! This large 3-bedroom home has so much to offer! The home has an oversized two car garage, additional RV parking, attached storage and a storage shed, deck and dog run with mature trees in the back yard. Inside you will find separate living and family rooms. The large screen tv above the gas fireplace in the family room stays! A bathroom and laundry area are conveniently located adjacent to the family room. Upstairs are three large bedrooms and a beautifully remodeled bathroom. The main level has a living room, dining area and galley kitchen. Close to RTD, shopping and restaurants. Put this home on your "must see" list and schedule a visit right away.



Colleen Mullins
 720-333-5363
 colleenmullins@yahoo.com



15995 E Iliff Place, Aurora, CO 80013 – Main Levels



Estimated areas

GLA FLOOR 1: 0 sq. ft, excluded 655 sq. ft
GLA FLOOR 2: 1246 sq. ft, excluded 914 sq. ft
Total GLA 1246 sq. ft, total scanned area 2815 sq. ft

SIZES AND DIMENSIONS ARE APPROXIMATE, ACTUAL MAY VARY.



Disclaimer: Sizes and Dimensions are Approximate, Actual May Vary.

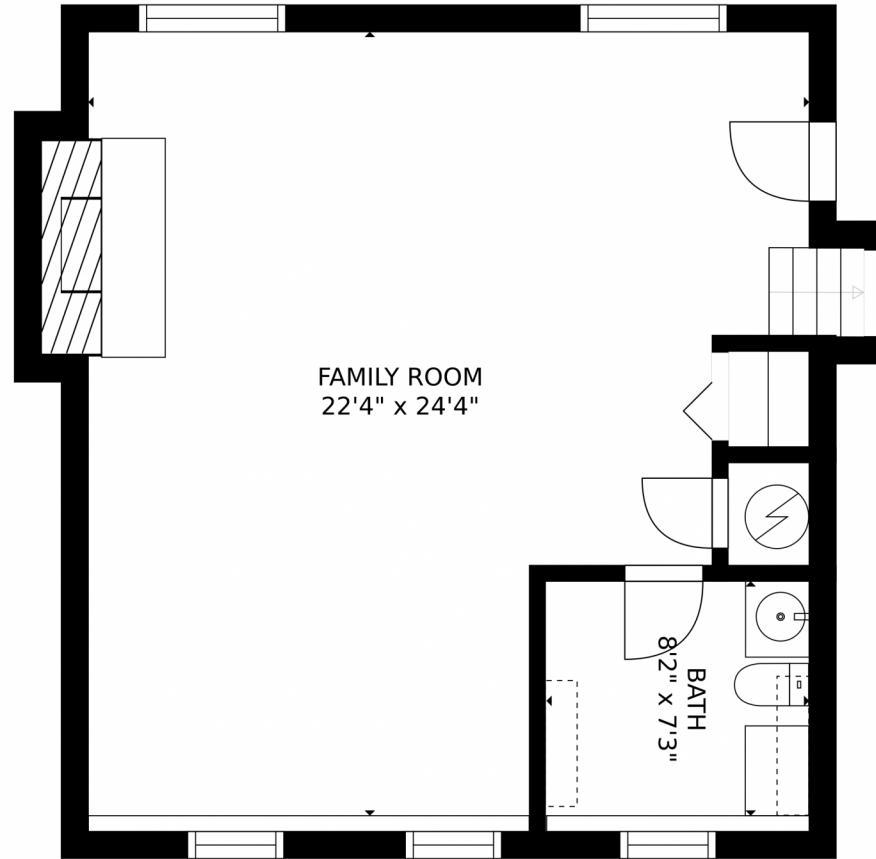


Colleen Mullins
720-333-5363
colleenmullins@yahoo.com



Scan code
for more
property
details





Estimated areas
GLA FLOOR 1: 0 sq. ft, excluded 655 sq. ft
GLA FLOOR 2: 1246 sq. ft, excluded 914 sq. ft
Total GLA 1246 sq. ft, total scanned area 2815 sq. ft
SIZES AND DIMENSIONS ARE APPROXIMATE, ACTUAL MAY VARY.



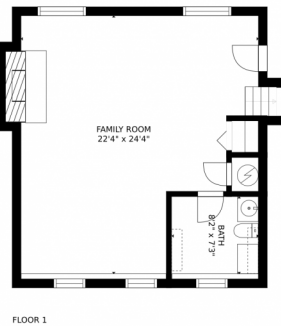
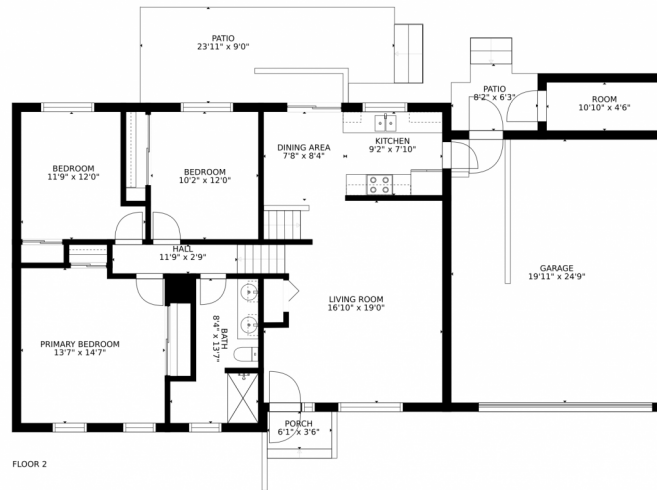
Disclaimer: Sizes and Dimensions are Approximate, Actual May Vary.



Colleen Mullins
720-333-5363
colleenmullins@yahoo.com



15995 E Iliff Place, Aurora, CO 80013 – All Levels



Estimated areas

GLA FLOOR 1: 0 sq. ft, excluded 655 sq. ft
GLA FLOOR 2: 1246 sq. ft, excluded 914 sq. ft
Total GLA 1246 sq. ft, total scanned area 2815 sq. ft

SIZES AND DIMENSIONS ARE APPROXIMATE, ACTUAL MAY VARY.



Disclaimer: Sizes and Dimensions are Approximate, Actual May Vary.



Colleen Mullins
720-333-5363
colleenmullins@yahoo.com

