



5522 S Nucla Street
 Centennial, CO 80015
 COMMUNITY: Piney Creek

MLS # 4815060
 PRICE \$800,000



Single Family 4679 SQFT 5 Beds 3 Baths 2 Car 0.25 Acre

PROPERTY DETAILS

Welcome Home to Piney Creek! This outstanding two-story abode, located on a cul-de-sac, truly has it all offering a phenomenal layout for entertaining on the main level to include a formal living room and dining suite along with an open concept main living area quietly nestled at the back of the home. Upstairs you will find a sprawling owner's suite complete with a private 5-piece bathroom along with three additional generously sized bedrooms and a secondary full bathroom. Many updates include the glorious remastered chef's kitchen along with a new roof in 2019, new A/C and furnace (just six months old!), and even a brand new water heater installed just two weeks ago. For the techy family member upgrades include smart locks and garage doors, a Lutron lighting system, and even a smart thermostat and security camera system. The backyard and outdoor living space was thoughtfully planned in a tri-zone layout offering a play area complete with an existing play structure along with a lounge space with a phenomenal covered patio looking out over the garden, then is nicely finished with a fenced dog run. This fantastic community is home to a full-sized Olympic swimming pool along with a swim team and lessons. The community center also includes a lovely clubhouse that hosts a multitude of neighborhood events including an Easter Egg Hunt, Fourth of July Parade, Food Truck Nights, and of course a Christmas Light Competition. Take in a game of



Tatyana Sturm
 720-350-5909
 tatyana@exitrealtydtc.com
 https://thestorckteam.com



pickleball, tennis, or basketball with court reservations available. Residents of Piney Creek enjoy the award winning education system of Cherry Creek Schools. Enjoy endless dining, shopping, and entertainment options in the Southlands Outdoor Retail District featuring a full AMC Dine-In Movie Theater, abundant casual dining options along with higher-end restaurant options as well, and so many shopping choices. The Southlands Mall also features a robust courtyard area with a mini splash park in the Summer and a skating rink in the Winter.

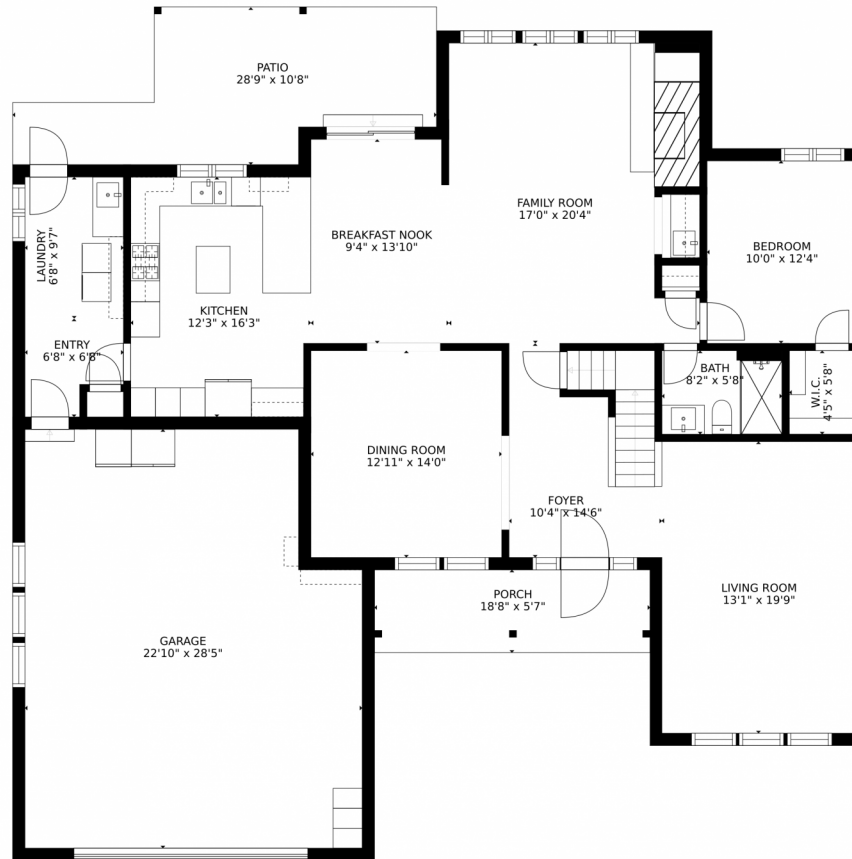


Tatyana Sturm
720-350-5909
tatyana@exitrealtydtc.com
<https://thestorckteam.com>



Scan code
for more
property
details

5522 S Nucla Street, Centennial, CO 80015 – Main Level



Estimated areas

GLA FLOOR 1: 0 sq. ft. excluded 1406 sq. ft.
GLA FLOOR 2: 1766 sq. ft. excluded 594 sq. ft.
GLA FLOOR 3: 1215 sq. ft. excluded 504 sq. ft.
Total GLA 3001 sq. ft. total scanned area 5905 sq. ft.

SIZES AND DIMENSIONS ARE APPROXIMATE, ACTUAL MAY VARY.



Disclaimer: Sizes and Dimensions are Approximate, Actual May Vary.



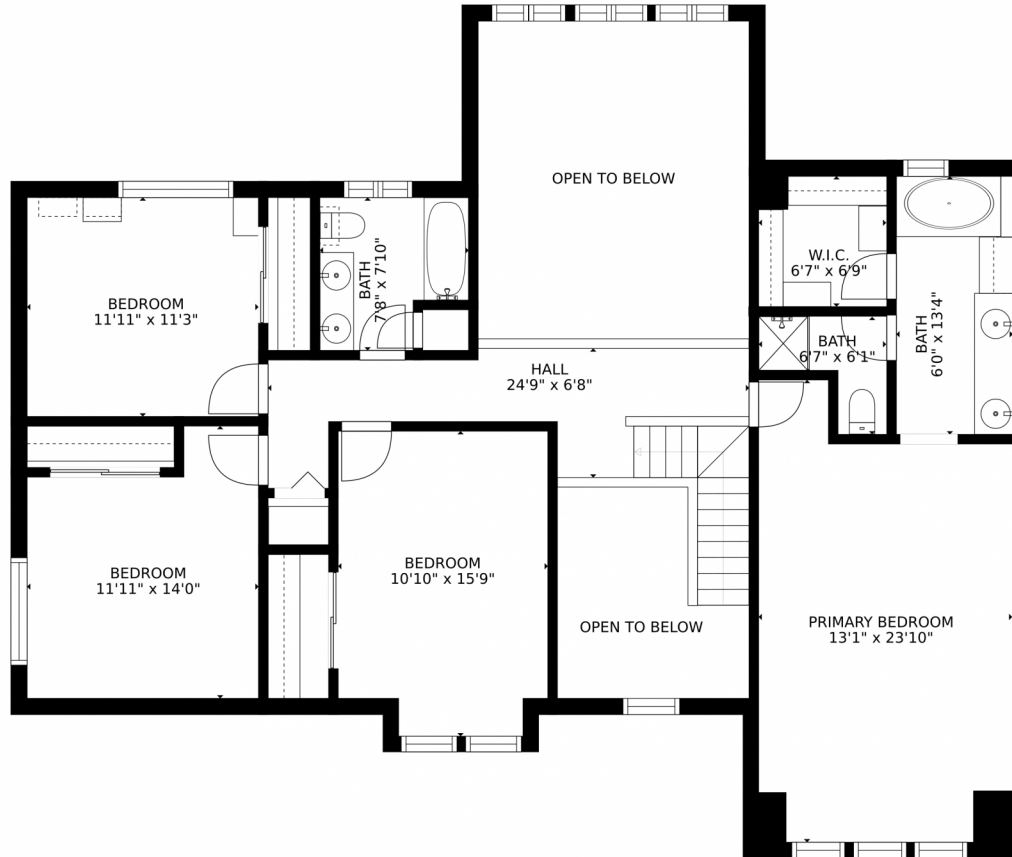
Tatyana Sturm
720-350-5909
tatyana@exitrealttydc.com
<https://thestorckteam.com>



Scan code
for more
property
details



5522 S Nucla Street, Centennial, CO 80015 – Upper Level



Estimated areas

GLA FLOOR 1: 0 sq. ft. excluded 1406 sq. ft.
GLA FLOOR 2: 1786 sq. ft. excluded 594 sq. ft.
GLA FLOOR 3: 1215 sq. ft. excluded 504 sq. ft.
Total GLA 3001 sq. ft. total scanned area 5905 sq. ft.

SIZES AND DIMENSIONS ARE APPROXIMATE, ACTUAL MAY VARY.

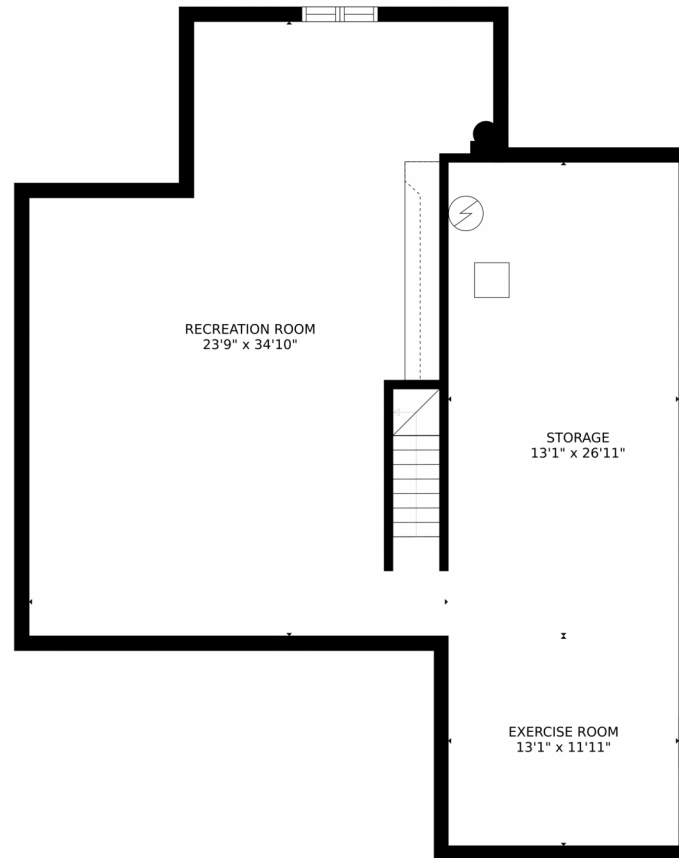


Disclaimer: Sizes and Dimensions are Approximate, Actual May Vary.



Tatyana Sturm
720-350-5909
tatyana@exitrealttydc.com
<https://thestorckteam.com>





Estimated areas

GLA FLOOR 1: 0 sq. ft, excluded 1406 sq. ft.
GLA FLOOR 2: 1766 sq. ft, excluded 994 sq. ft.
GLA FLOOR 3: 1215 sq. ft, excluded 504 sq. ft.
Total GLA 3001 sq. ft, total scanned area 5905 sq. ft.

SIZES AND DIMENSIONS ARE APPROXIMATE, ACTUAL MAY VARY.



Disclaimer: Sizes and Dimensions are Approximate, Actual May Vary.



Tatyana Sturm
720-350-5909
tatyana@exitrealtydtc.com
<https://thestorckteam.com>



5522 S Nucla Street, Centennial, CO 80015 – All Levels



Estimated areas

GLA FLOOR 1: 0 sq. ft. excluded 1406 sq. ft.
GLA FLOOR 2: 1766 sq. ft. excluded 594 sq. ft.
GLA FLOOR 3: 1215 sq. ft. excluded 504 sq. ft.
Total GLA 3001 sq. ft. total scanned area 5905 sq. ft.

SIZES AND DIMENSIONS ARE APPROXIMATE, ACTUAL MAY VARY.



Disclaimer: Sizes and Dimensions are Approximate, Actual May Vary.



Tatyana Sturm
720-350-5909
tatyana@exitrealttydc.com
<https://thestorckteam.com>



Scan code
for more
property
details

